

Former Rite Aid

161 E Beech St, Harrison, MI 48625

± 7,930 Square Feet

±0.52 Acres



\$11/SF

NNN Lease Rate

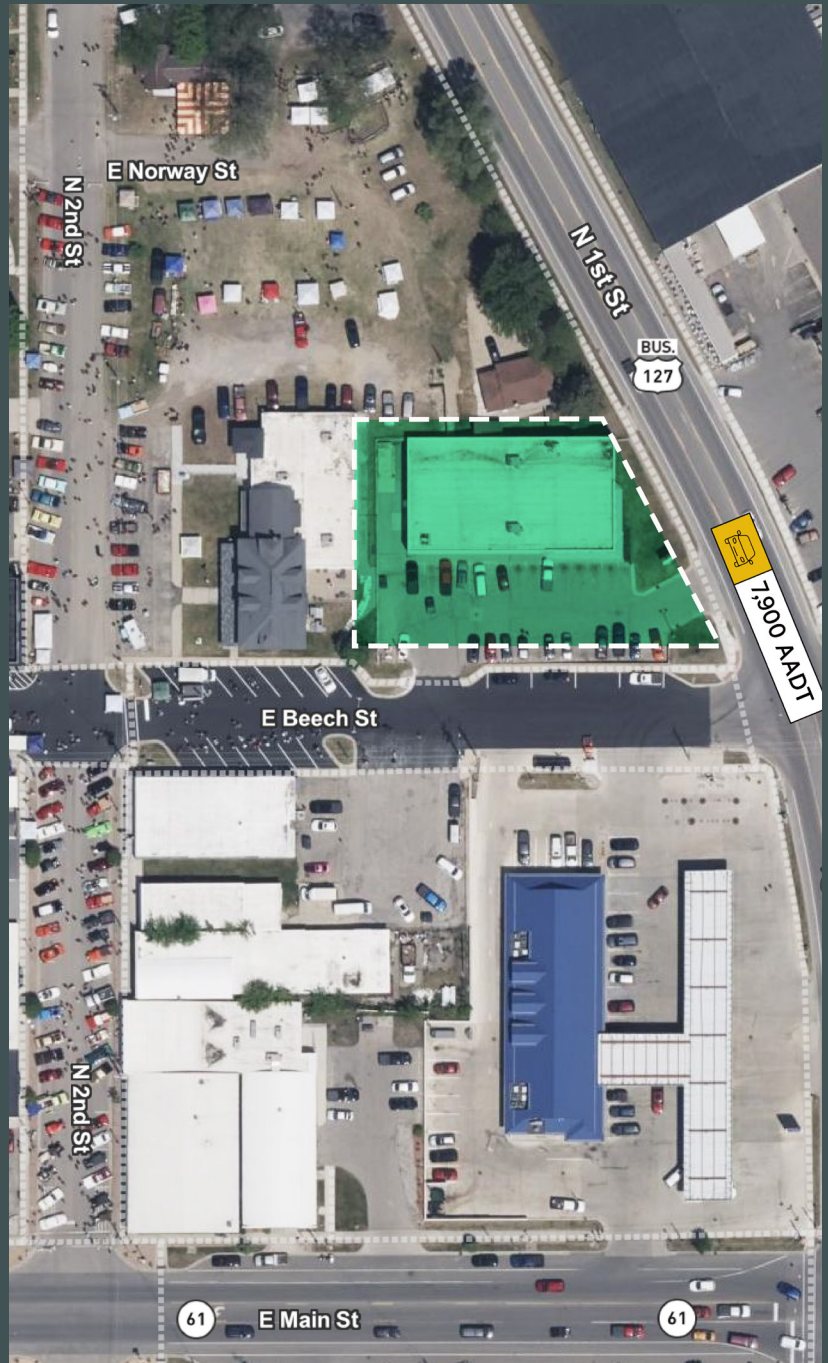
\$795K

List Price

1992

Year Built

The property at 161 E Beech St, Harrison, MI offers a high-profile corner site in the downtown Harrison market. The existing building is of standalone construction and is in good condition. The lot size is .52 acres with access on two streets. The building is ideally suited for a variety of commercial or retail uses with ample parking space and high visibility.



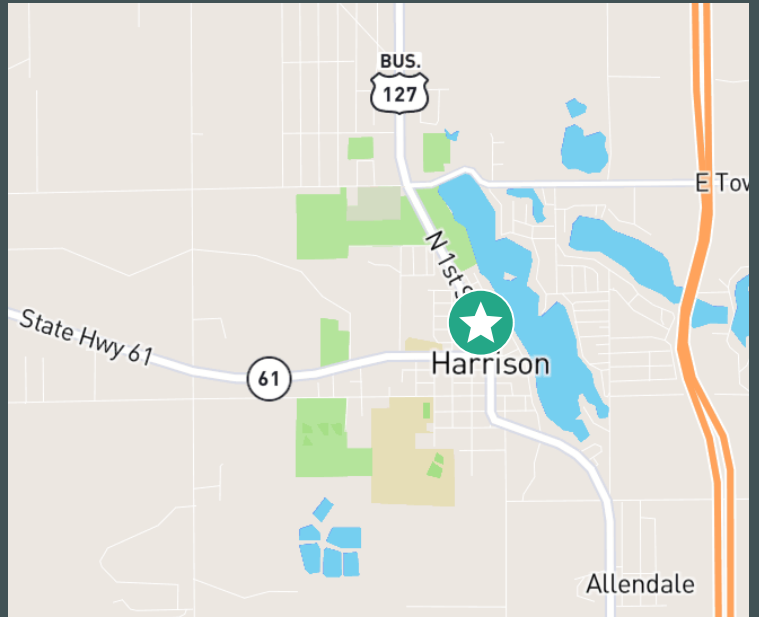
Property Overview

Parcel #	070-812-007-00
Size	7,930 SF
Lot	0.52 Acres
Parking	28 Surface Spaces
Zoning	C-2
Traffic	7,900 AADT on the corner of N 1st St and E Beech St.
County	Clare County

Harrison, MI

A Jewel in Clare County

Situated in Clare County, Michigan, the charming city of Harrison is renowned for its stunning natural landscapes and welcoming community. The city, with its scenic backdrop of forests, lakes, and rivers, provides an idyllic setting for outdoor enthusiasts. Harrison boasts a friendly, supportive community, recognized for its commitment to local businesses. This strong sense of community support lays the foundation for a robust customer base. In the heart of Harrison lies the property, conveniently positioned with easy access to major roads and highways, ensuring smooth transportation and accessibility for both customers and employees.



Contact Us

Cameron Timmer

Vice President

+1 616 485 4131

cameron.timmer@cbre.com

Russ Bono, CCIM

Vice President

+1 616 799 6629

russ.bono@cbre.com

© 2024 CBRE, Inc. All rights reserved. This information has been obtained from sources believed reliable, but has not been verified for accuracy or completeness. You should conduct a careful, independent investigation of the property and verify all information. Any reliance on this information is solely at your own risk. CBRE and the CBRE logo are service marks of CBRE, Inc. All other marks displayed on this document are the property of their respective owners, and the use of such logos does not imply any affiliation with or endorsement of CBRE. Photos herein are the property of their respective owners. Use of these images without the express written consent of the owner is prohibited.