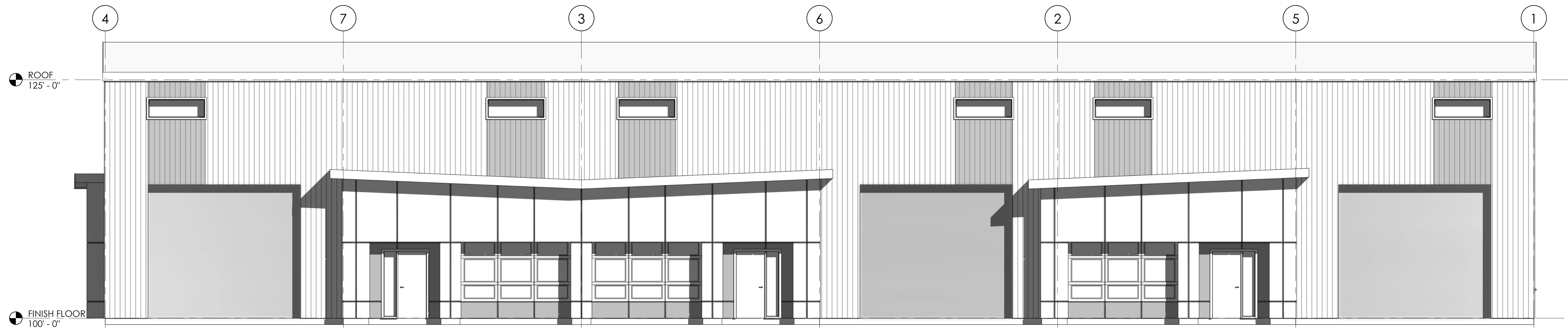
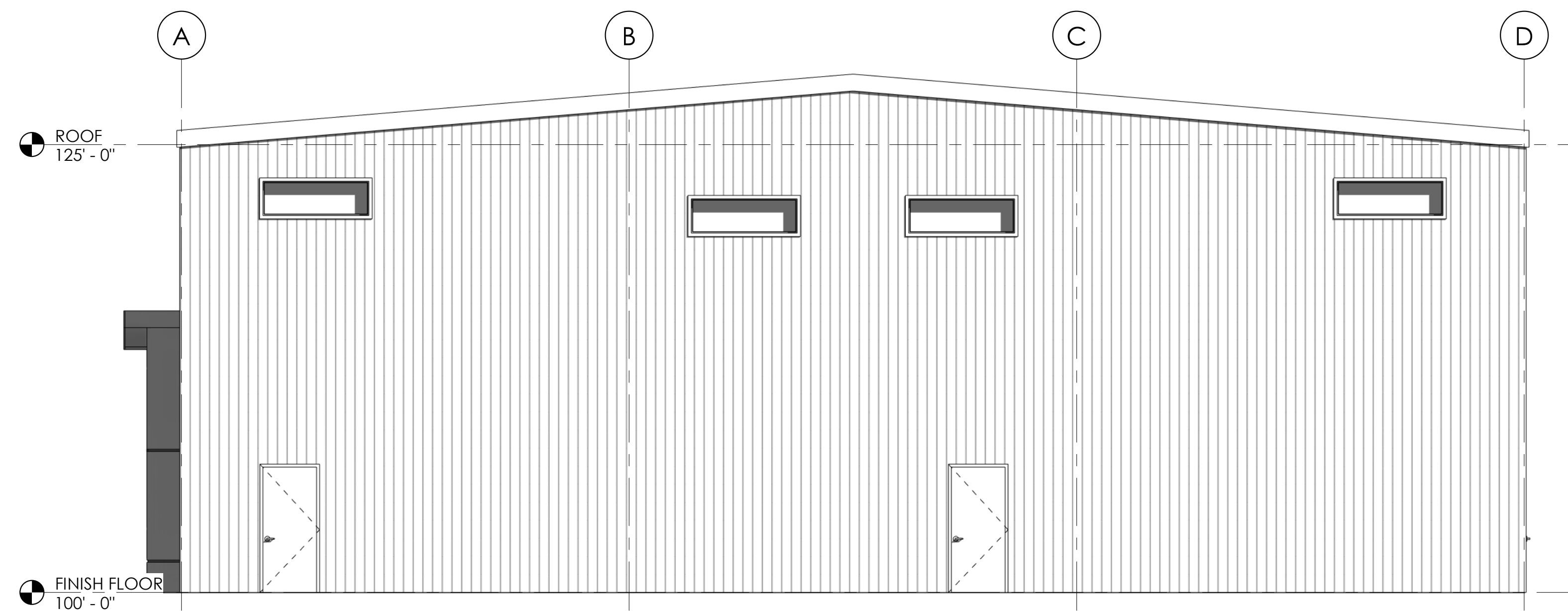


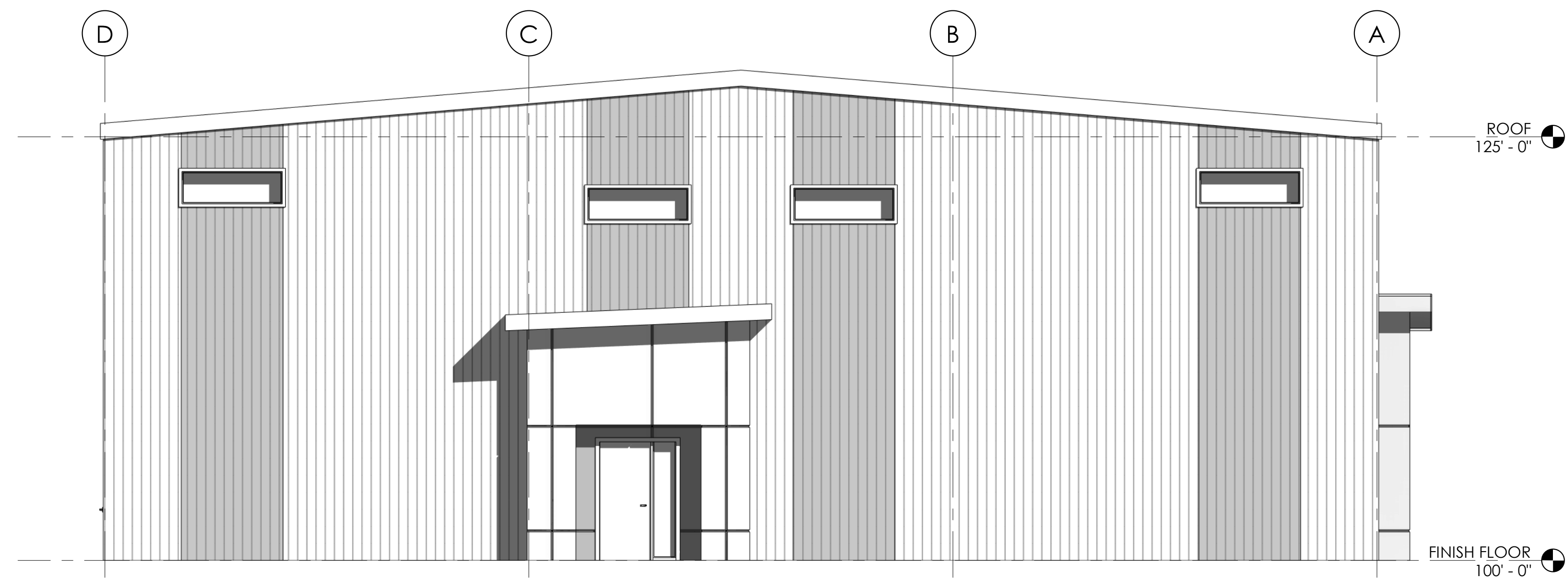
1 FLOOR PLAN
 3/16" = 1'-0"



1 NORTH
3/16" = 1'-0"

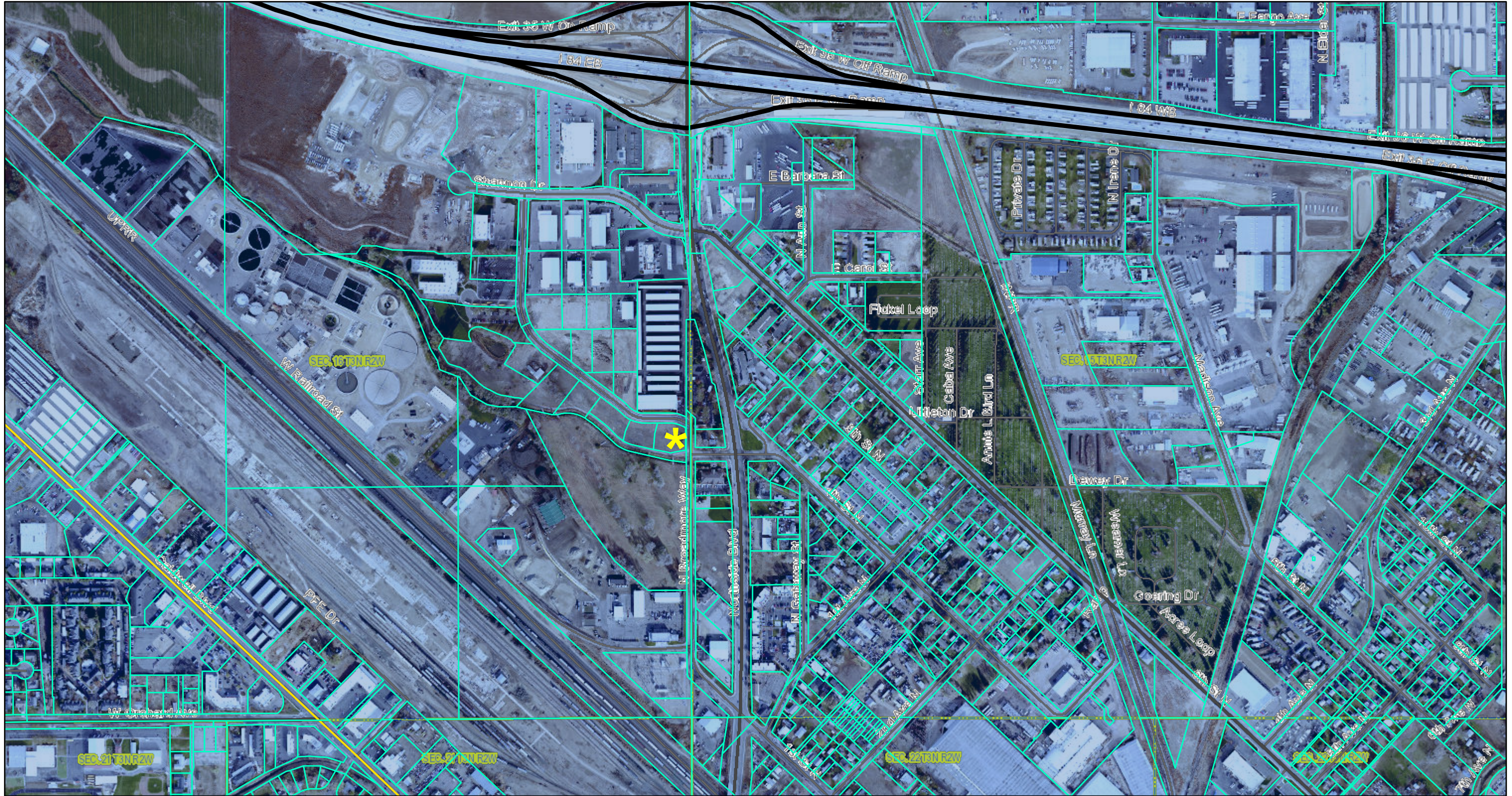


3 WEST
3/16" = 1'-0"



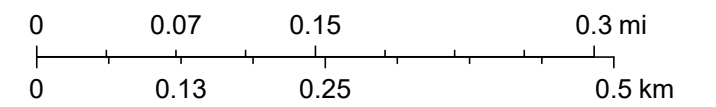
2 EAST
3/16" = 1'-0"

Canyon County Assessor



4/26/2023, 2:29:30 PM

1:9,028



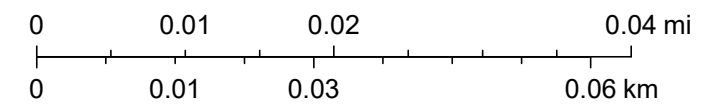
Canyon County, Canyon County Assessor

Canyon County Assessor



4/26/2023, 2:30:02 PM

1:1,128



Canyon County, Canyon County Assessor