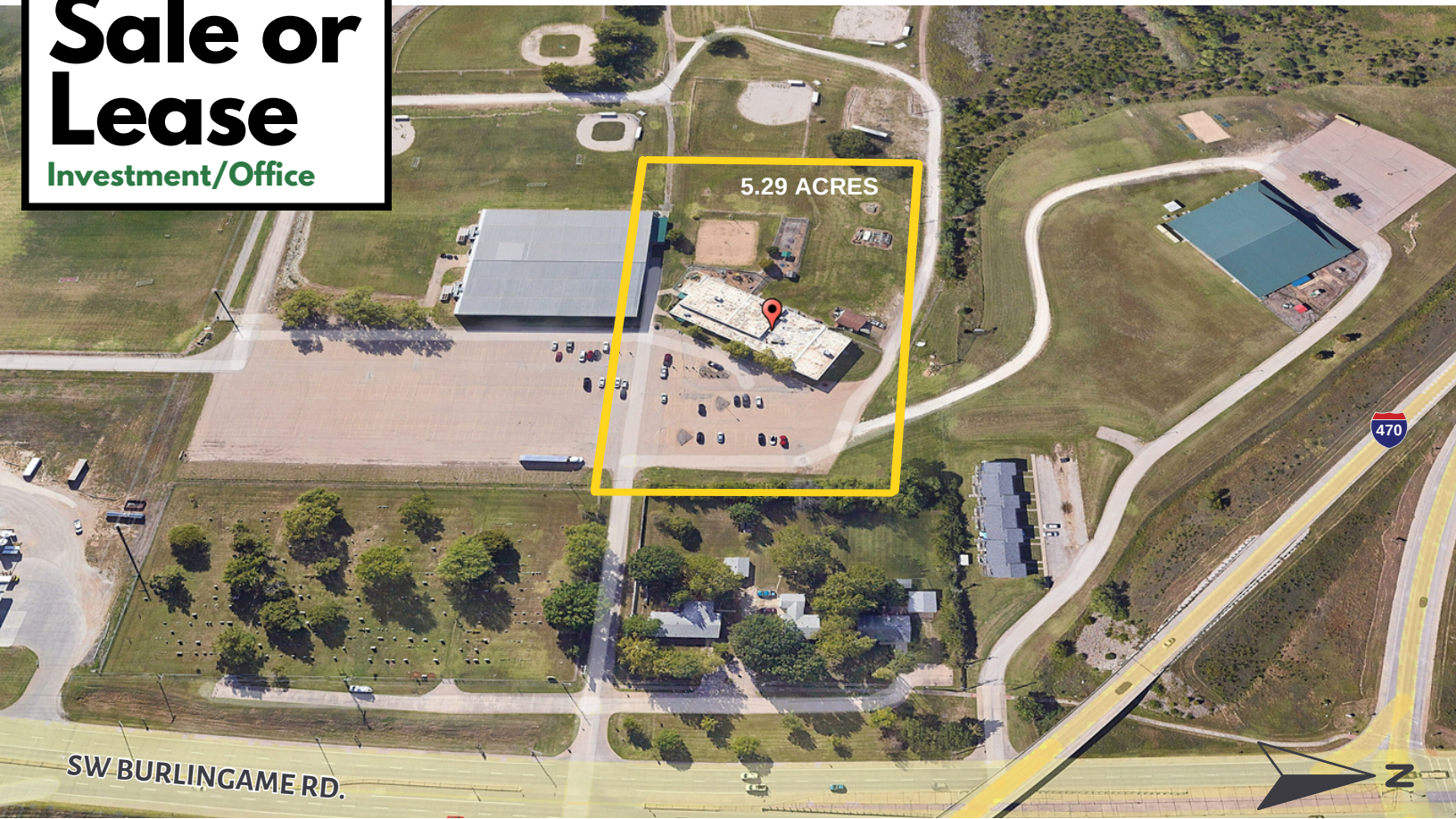


For Sale or Lease

Investment/Office



3907 SW BURLINGAME RD.
TOPEKA, KS, 66609



This multi-tenant investment property is located on the south side of Topeka, KS, with immediate access to I-470. There is one available space for lease, and the property includes a mix of tenants from daycare to office use.

SALE PRICE: \$1,995,000

LEASE RATE: \$9/SF, FULL SERVICE

PROPERTY DETAILS

- Built in 1965 / 1979 / 2008
- Zoning: O & I-2 (PUD)
- Lot Size: 5.29 Acres
- Building Size: 18,004 SF (plus basement)



✉ kirsten@foundationscommercial.com

🌐 www.foundationscommercial.com

Kirsten Flory 📞 **785-766-6568**

This document has been prepared by Foundations Commercial for advertising and general information only. Foundations Commercial makes no guarantees, representations, or warranties of any kind, expressed or implied, regarding the information including, but not limited to, warranties of content, accuracy and reliability. Any interested party should undertake their own inquiries as to the accuracy of the information. Foundations Commercial excludes unequivocally all inferred or implied terms, conditions and warranties arising out of this document and excludes all liability for loss and damages arising therefrom. This communication is not intended to cause or induce of any existing listing agreement.

For Sale or Lease

Investment/Office

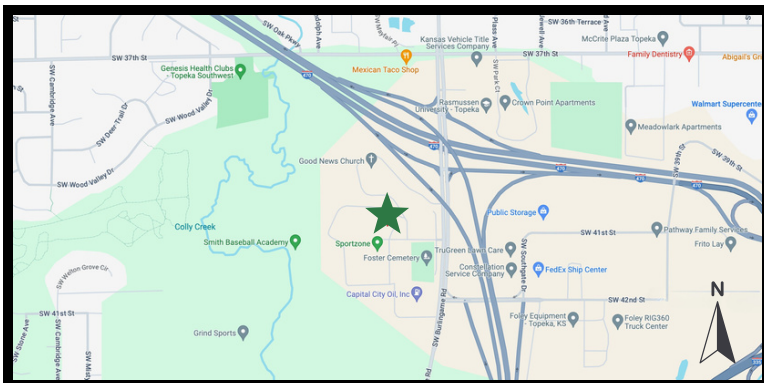


3907 SW BURLINGAME RD.
TOPEKA, KS, 66609



AVAILABLE SPACE : 3,880 SF

- Three private offices
- Lease Rate: \$2,910 per month
- Wide open spaces with 14' ceilings
- Common area restrooms
- Large parking lot
- Space may be demised



kirsten@foundationscommercial.com

www.foundationscommercial.com

Kirsten Flory **785-766-6568**

This document has been prepared by Foundations Commercial for advertising and general information only. Foundations Commercial makes no guarantees, representations, or warranties of any kind, expressed or implied, regarding the information including, but not limited to, warranties of content, accuracy and reliability. Any interested party should undertake their own inquiries as to the accuracy of the information. Foundations Commercial excludes unequivocally all inferred or implied terms, conditions and warranties arising out of this document and excludes all liability for loss and damages arising therefrom. This communication is not intended to cause or induce of any existing listing agreement.