

3331 OAKLEY PARK ROAD
COMMERCE TWP., MICHIGAN

INDUSTRIAL FOR SALE
10,276 Square Feet Available



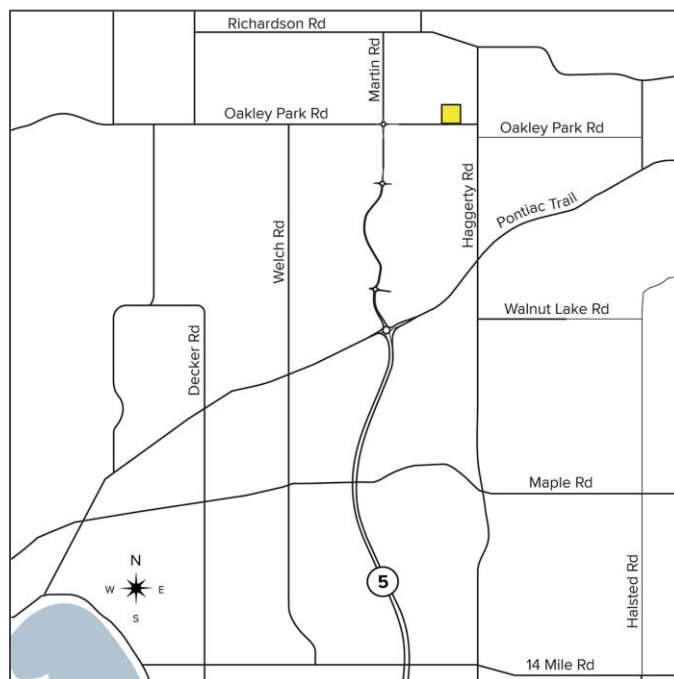
**SIGNATURE
ASSOCIATES**
KNOW SIGNATURE | KNOW RESULTS

RARE OPPORTUNITY



PROPERTY FEATURES

- 10,276 square feet available
- 12' – 16' clear height
- (3) 10' x 12' grade level doors
- 1600 amps, 240 volts, 3 phase power
- Freestanding building with prominent frontage on Oakley Park Road, strategically located between Haggerty Road and Martin Parkway (M-5 extension)
- The flexible layout allows for potential subdivision into three separate units
- Opportunity to expand parking at the front of the building, enhancing functionality and accessibility
- Located on 1.300 acres
- Sale Price: Contact Brokers



For more information, please contact:

JEFF LEMANSKI
(248) 359 0641
jlemanski@signatureassociates.com

PAUL HOGE
(248) 948 0103
paulhoge@signatureassociates.com

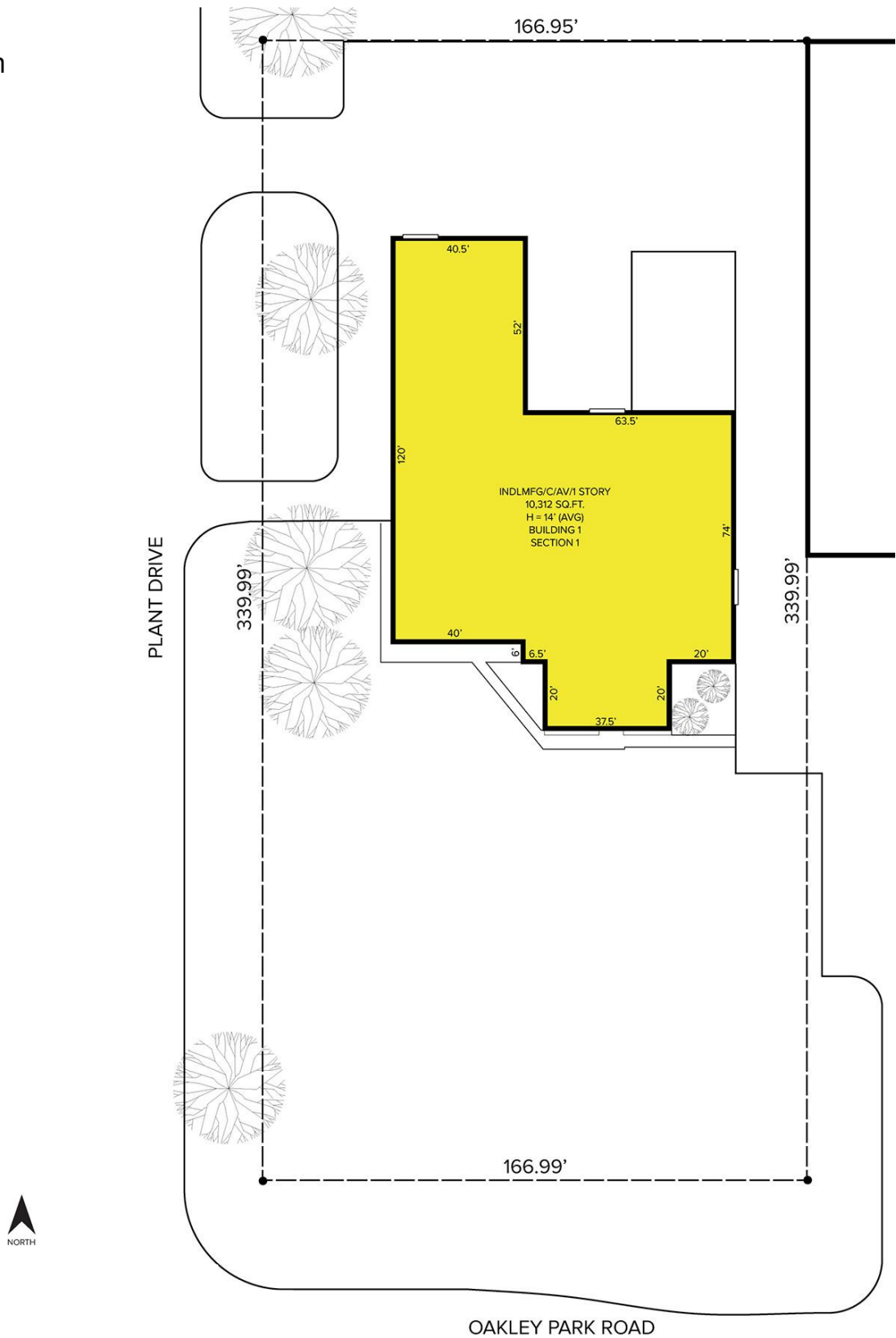
SIGNATURE ASSOCIATES
One Towne Square, Suite 1200
Southfield, MI 48076
www.signatureassociates.com

3331 Oakley Park Road – Commerce Twp., Michigan

Industrial For Sale

10,276
Square Feet
AVAILABLE

Site Plan



For more information, please contact:

JEFF LEMANSKI
(248) 359 0641
jlemanski@signatureassociates.com

PAUL HOGE
(248) 948 0103
paulhoge@signatureassociates.com

SIGNATURE ASSOCIATES
One Towne Square, Suite 1200
Southfield, MI 48076
www.signatureassociates.com

Information is subject to verification and no liability for errors or omissions is assumed. Price is subject to change and listing withdrawal.

3331 Oakley Park Road – Commerce Twp., Michigan

Industrial For Sale

10,276
Square Feet
AVAILABLE

Aerial



For more information, please contact:

JEFF LEMANSKI

(248) 359 0641

jlemanski@signatureassociates.com

PAUL HOGE

(248) 948 0103

paulhoge@signatureassociates.com

SIGNATURE ASSOCIATES

One Towne Square, Suite 1200

Southfield, MI 48076

www.signatureassociates.com

Information is subject to verification and no liability for errors or omissions is assumed. Price is subject to change and listing withdrawal.