



Colliers

Sale Price:  
**\$2,800,000**

Lease Rate:  
**\$8.00** psf nnn

**Philip Gagnon, SIOR**  
860 616 4016  
[philip.gagnon@colliers.com](mailto:philip.gagnon@colliers.com)

864 Wethersfield Avenue  
Hartford, CT 06114  
860 249 6521 Main

[colliers.com/hartford](https://colliers.com/hartford)

## 295H Murphy Road Hartford, CT 06114

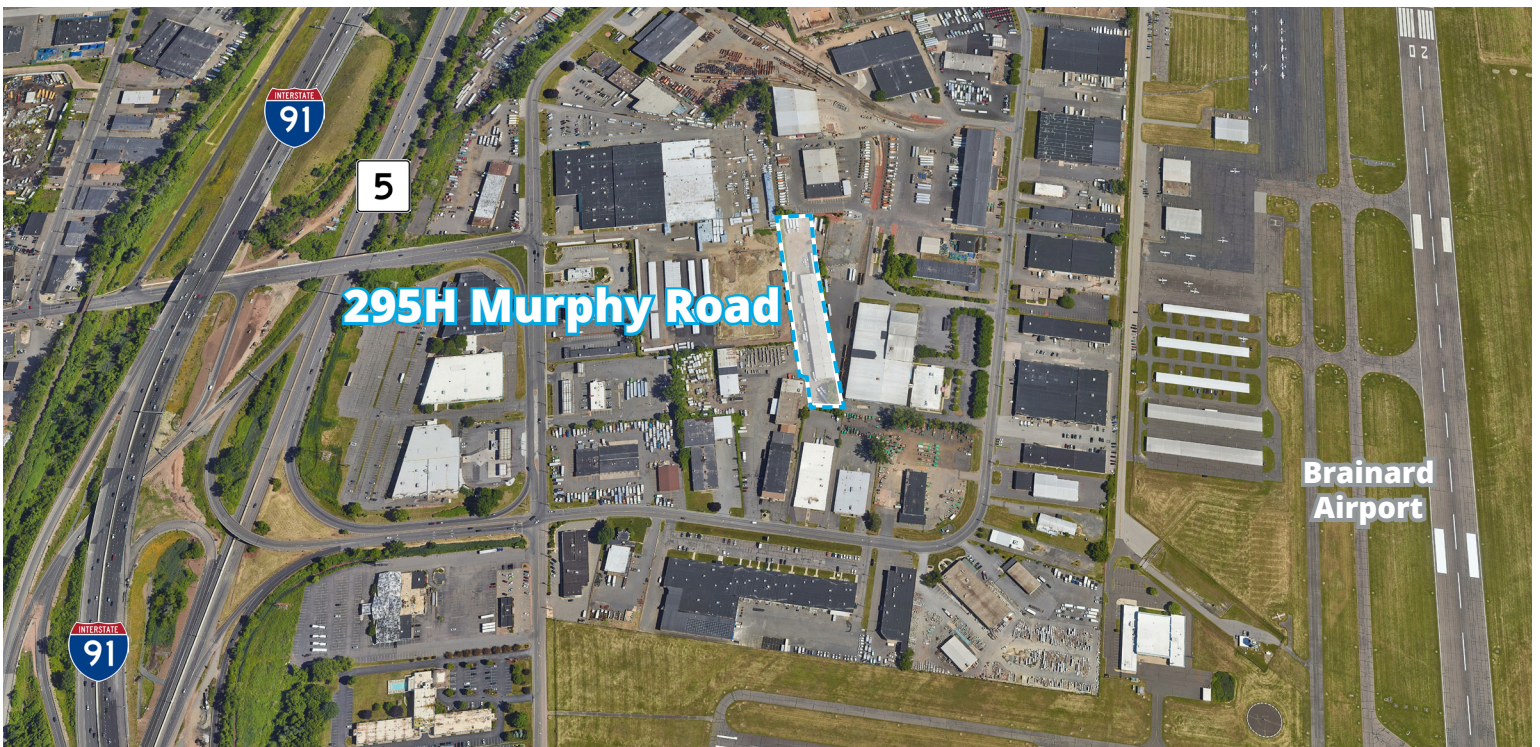
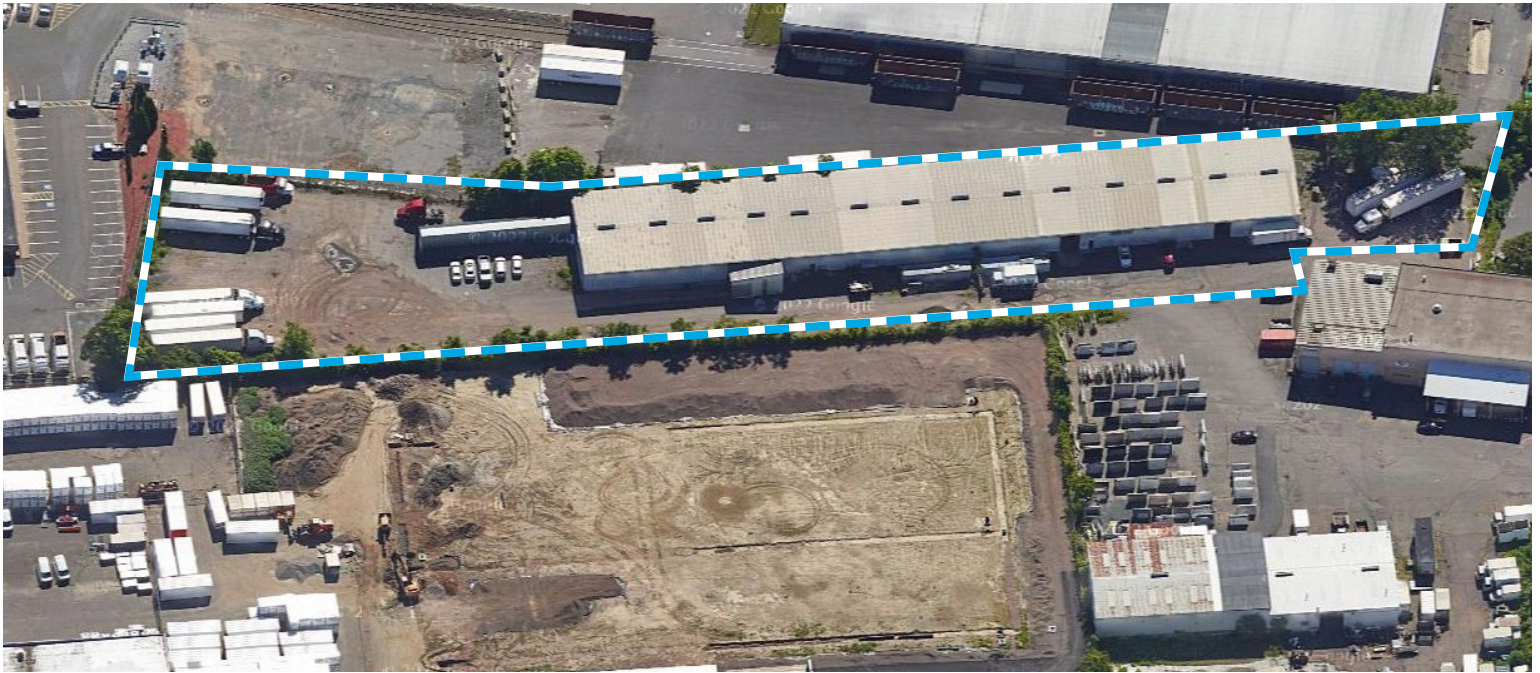
### Rare opportunity to acquire a prime commercial property in Hartford, CT

Rare Mid-Size Industrial Building located directly off Interstate 91 and CT-Rte. 15! This property features a clear span interior that allows for versatile uses. All utilities are available at the building, which includes a full-size loading dock and four (4) drive-ins for ease of leasing. Situated on 2.4+/- acres, there is ample room for 80+ auto parking or combination of trailers based on your business needs. This unique property offers a prime location with exceptional accessibility, making it ideal for various industrial purposes. Contact us for more details and to schedule a viewing.

Copyright © 2021 Colliers International. Information herein has been obtained from sources deemed reliable, however its accuracy cannot be guaranteed. The user is required to conduct their own due diligence and verification.

Accelerating success.

# Site Plan



## Contact:

**Philip Gagnon, SIOR**  
860 616 4016  
philip.gagnon@colliers.com

864 Wethersfield Avenue  
Hartford, CT 06114  
860 249 6521 Main

[colliers.com/hartford](http://colliers.com/hartford)