



# FOR LEASE

## 1002 SE Monterey Commons Blvd

1002 SE Monterey Commons Blvd

Stuart, FL 34996

### PROPERTY OVERVIEW

Monterey Commons consists of three classic Mediterranean style office buildings situated in a campus-like setting nestled amongst rows of royal palm trees and oak trees, creating a warm working environment. Monterey Commons is located in the heart of Stuart's business corridor in Martin County featuring an impressive tenant roster of professional firms including Wilmington Trust, Gunster Law Firm, Bessemer Trust, Rehmann, The Business Development Board of Martin County, Economic Council of Martin County, Hill Barth & King, Mrachek Fitzgerald Rose Konopka Thomas and Weiss, P.A., Wright Ponsoldt Lozeau Trial Attorneys, Comiter Singer, HBK CPA's, UKA, Awbury Analytics and CCR Wealth Management. Other surrounding businesses include Northern Trust and Merrill Lynch.



**JEFFREY D. CHAMBERLIN**

PRESIDENT/BROKER, CCIM,  
SIOR

Mobile 772.528.6056  
chamberlin@slccommercial.com



**JAIME CHAMBERLIN,**  
CCIM, MBA

VICE PRESIDENT, BROKER  
Mobile 772.486.3330  
jaime@slccommercial.com

772.220.4096 | slccommercial.com

[VIEW TOUR LINK](#)

LEASE RATE

\$20.00 SF/yr (NNN- \$10.00)



**SLC Commercial**  
Realty & Development

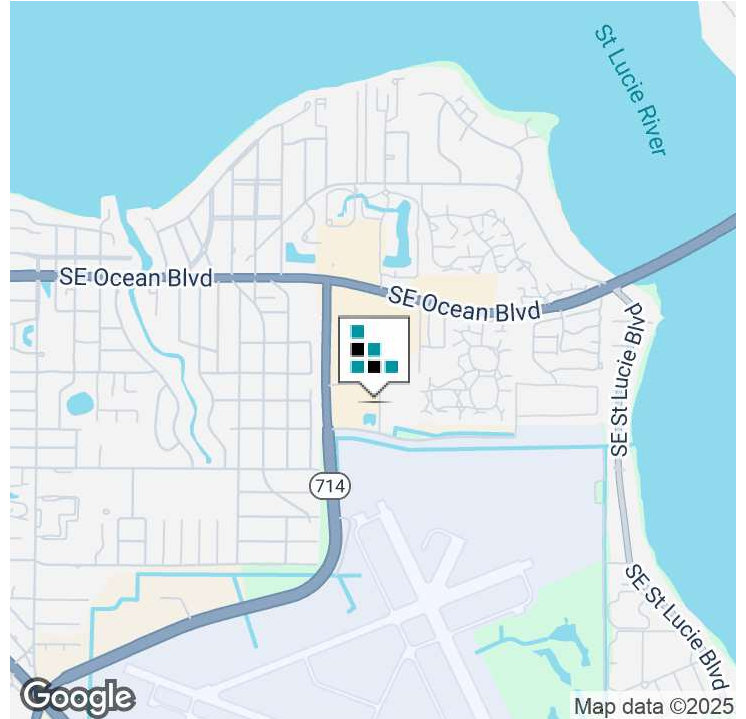


The information contained herein has been obtained from sources believed to be reliable, but no warranty or representation, expressed or implied, is made. All sizes and dimensions are approximate. Any prospective buyer should exercise prudence and verify independently all significant data and property information. This is NOT an offer of sub-agency or co-brokerage.

# Executive Summary

CLASS "A" OFFICE SPACE

FOR LEASE



## OFFERING SUMMARY

Building Size:	37,580 SF
Available Size:	1,532 - 4,597 SF
Zoning:	CPUD - Commercial Planned Unit. Business and Professional uses.
Utilities:	All three buildings offer high speed internet (AT&T or Comcast, Direct TV and ITS Fiber Optics). Each tenant's suite is separately metered.

## PROPERTY OVERVIEW

All buildings were constructed with attention to detail using the finest materials, quality workmanship, and structural integrity. Aesthetically pleasing in every way from the landscaped walkways covered in multi-toned brick pavers, inviting foyers and lobbies dressed in travertine marble, interior stairwells accompanied by beautiful iron balusters and light oak finished handrails. Ample windows in most of the suites provide natural light. The Gunster Building was built in 1995 and has beautiful architecture accented with exterior arched walkways, centered classic clay tiled cupola, and quality custom interior finishes. The Corsair Building was built in 1999 and consists of two buildings joined by an artistic canopy covered entrance. The Rubicon was constructed in 2005 and consists of two buildings with covered canopied entrances and impact glass windows. The owner and management is located on site. Pride of ownership is apparent in the attention to maintenance and the overall condition of the buildings and landscaping.



# Available Spaces

CLASS "A" OFFICE SPACE

FOR LEASE

## LEASE INFORMATION

Lease Type:	NNN	Lease Term:	60 months
Total Space:	1,532 - 4,597 SF	Lease Rate:	\$20.00 SF/yr

## AVAILABLE SPACES

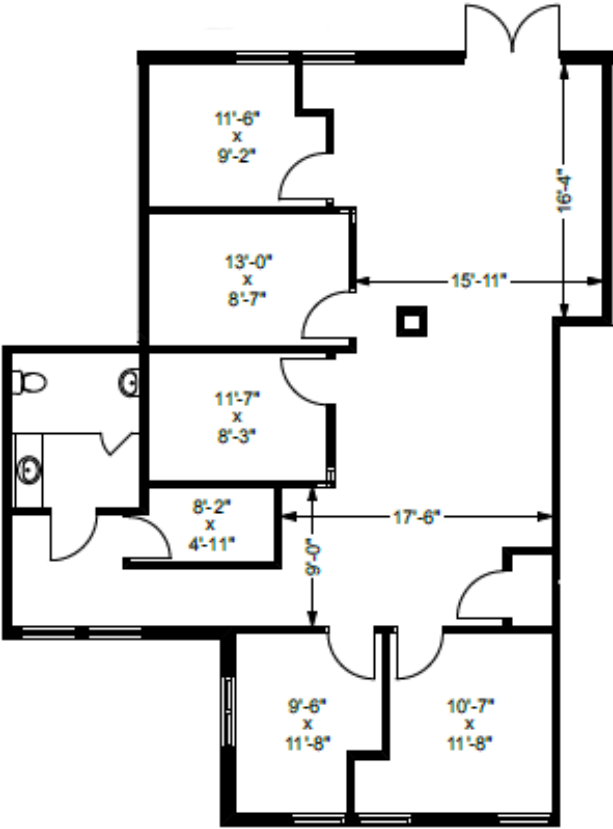
SUITE	TENANT	SIZE (SF)	LEASE TYPE	LEASE RATE	DESCRIPTION
Suite 102 - Rubicon	Available	1,532 SF	NNN	\$20.00 SF/yr	Private exterior entrance
Suite 202 - Rubicon	Available	4,597 SF	NNN	\$20.00 SF/yr	Can be divisible.



# Suite 102 - 1,532sf

CLASS "A" OFFICE SPACE

FOR LEASE



# Suite 202 - 4,597sf

CLASS "A" OFFICE SPACE

FOR LEASE



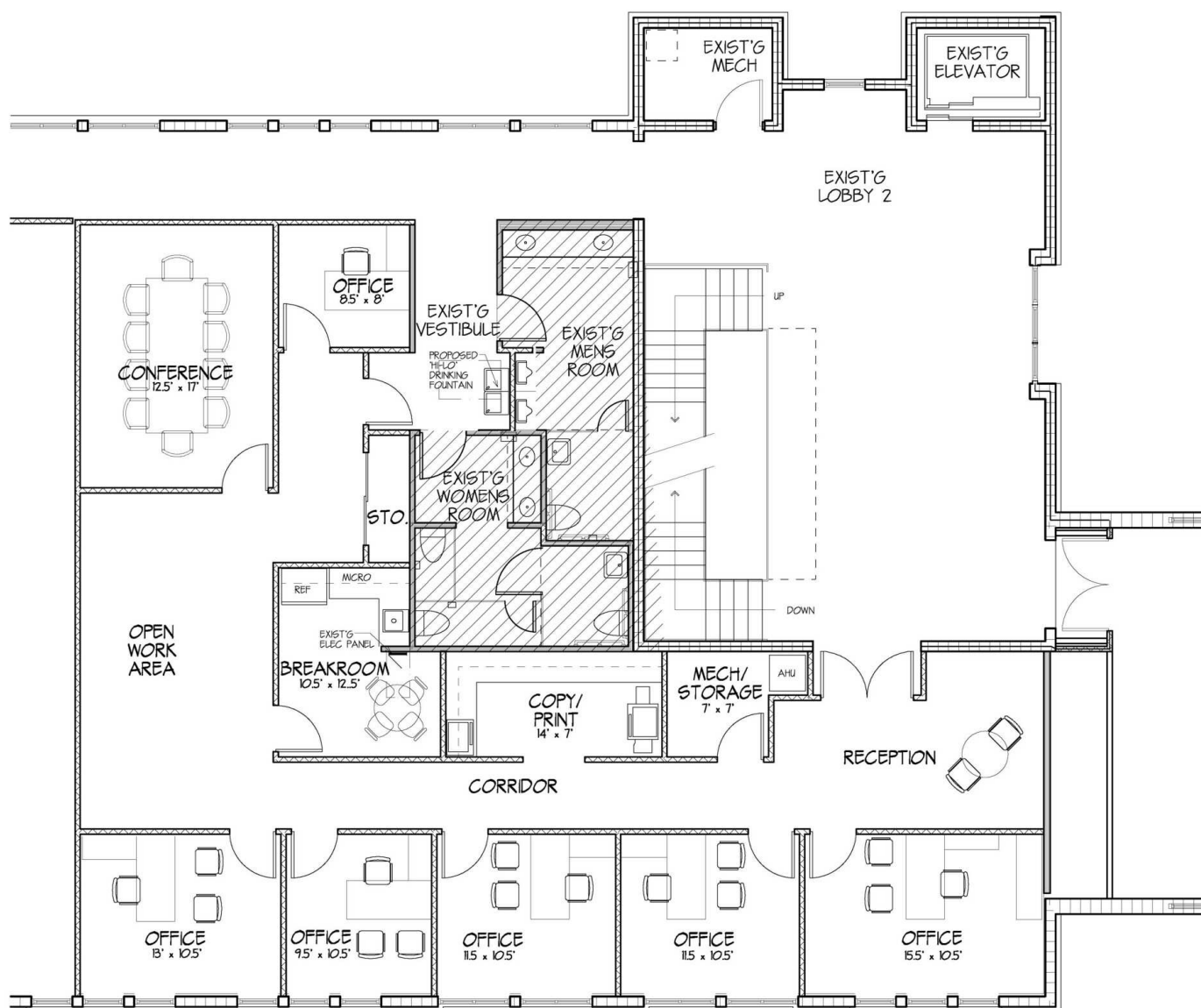
**Suite 202 - Rubicon** Office Building \$20.00 SF/yr 4,597sf 60 months

Large, bright, open space on 2nd floor with double door entrance directly off lobby with elevator access. Landlord to contribute to a TI allowance towards buildout and finishes of the space.

# Sample Floorplan - 2,579sf

CLASS "A" OFFICE SPACE

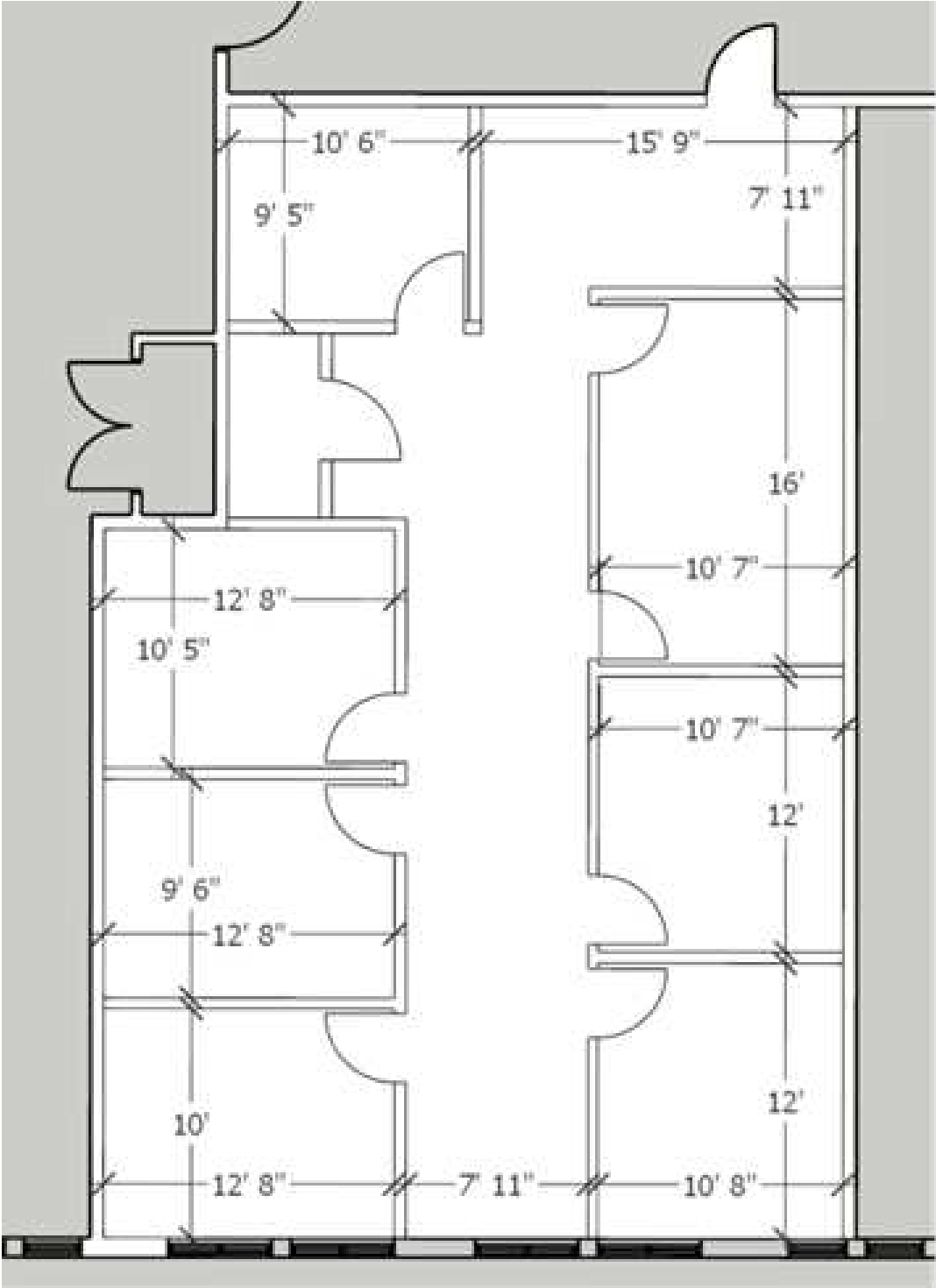
FOR LEASE



# Sample Floorplan -2,018 sf

CLASS "A" OFFICE SPACE

FOR LEASE





# Additional Photos

CLASS "A" OFFICE SPACE

FOR LEASE

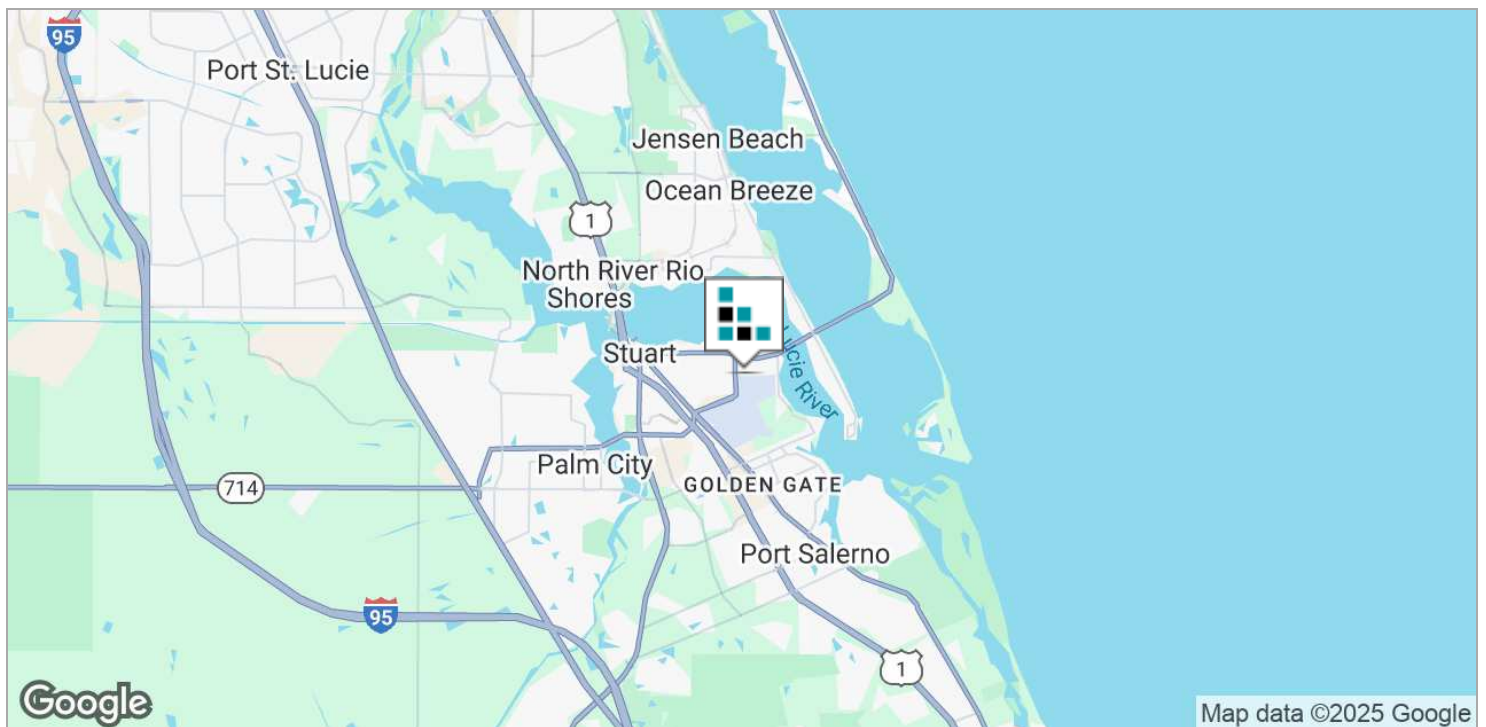
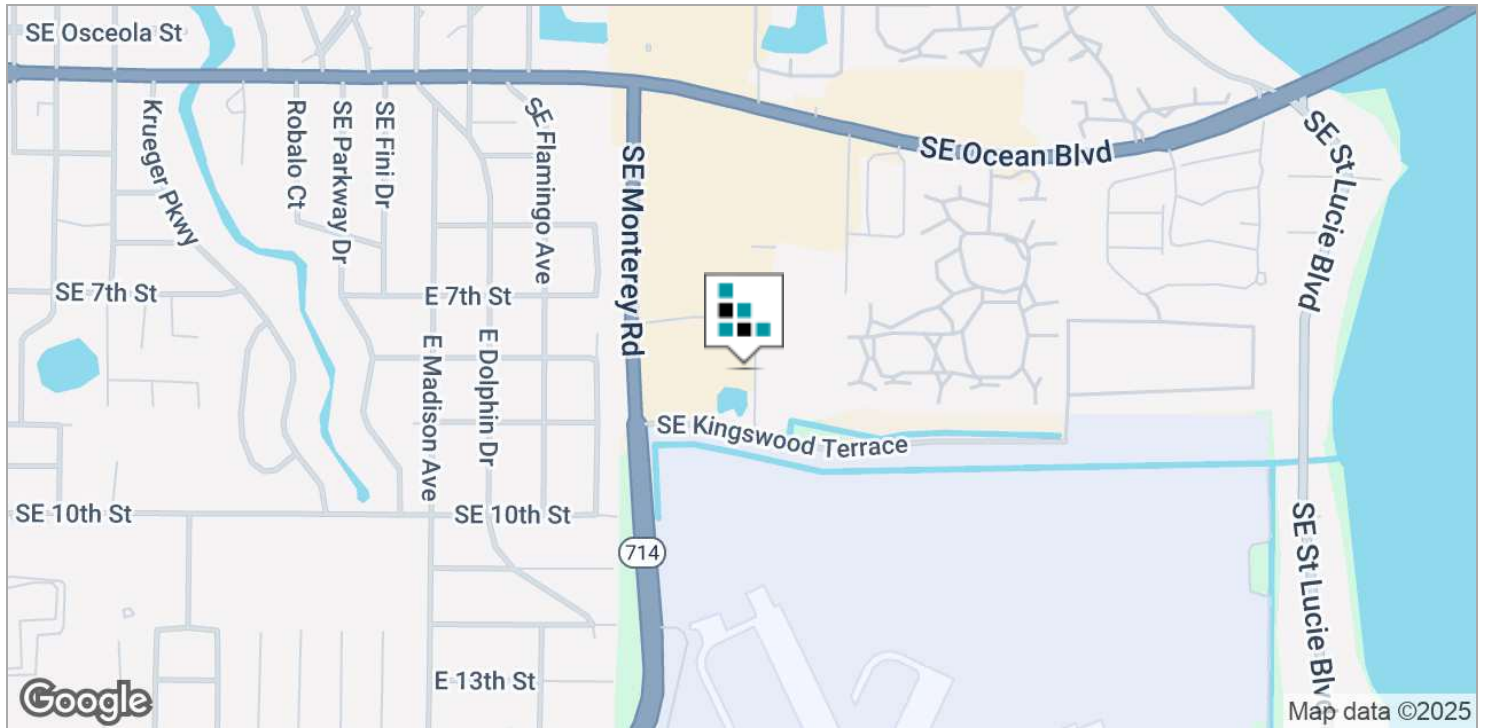




# Location Maps

CLASS "A" OFFICE SPACE

FOR LEASE



# Disclaimer

## CLASS "A" OFFICE SPACE

FOR LEASE

This presentation package has been prepared by the company representing the property for informational purposes only and does not purport to contain all information necessary to reach a purchase decision.

The information herein has been given by the Owner or other sources believed to be reliable, but it has not necessarily been independently verified by the Company representing the property and neither its accuracy nor its completeness is guaranteed.

This information is subject to errors, omissions, changes, prior sale or withdrawal without notice by the Company representing the property and does not constitute a recommendation, endorsement or advice as to the value for the purchase of any property. Each prospective lessee or purchaser is to rely upon his/her own investigation, evaluation and judgment as to the advisability of leasing or purchasing the property.

Furthermore, any financial information and calculations presented in this analysis are believed to be accurate, but are not guaranteed and are intended for the purposes of projection and analysis only. The user of this financial information contained herein should consult a tax specialist concerning his/her particular circumstances before making any investment.

