

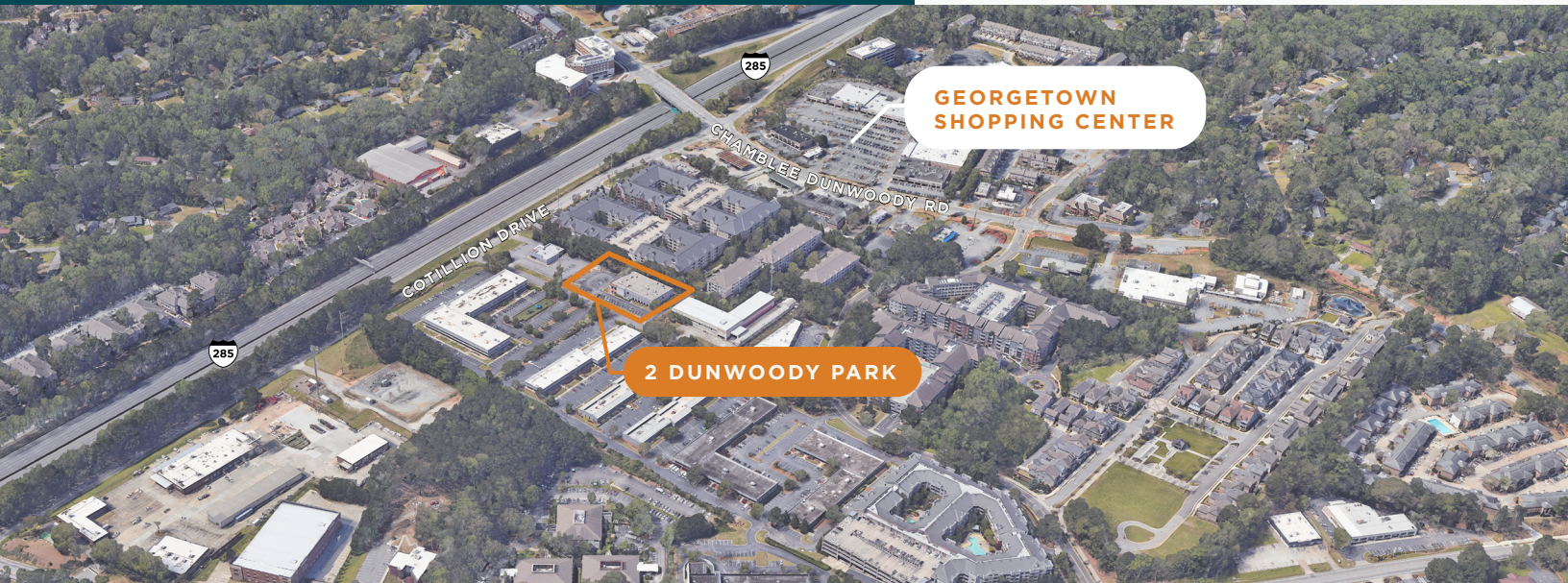


DUNWOODY PARK

DUNWOODY  **DUNWOODY**

**CORPORATE HQ
TRAINING FACILITY
SCHOOL
MEDICAL PRACTICE**

FOR SALE
28,347 SF
AVAILABLE



 **SK** COMMERCIAL
REALTY

P.X. HEAD
VICE PRESIDENT
404.272.3408
PKHEAD@SKCR.COM

DUNWOODY PARK

PROPERTY TYPE
OFFICE/MEDICAL/INSTITUTIONAL

NUMBER OF BUILDINGS
2

TOTAL SIZE
±28,347 SF

YEAR BUILT / RENOVATED
1979 / 2002

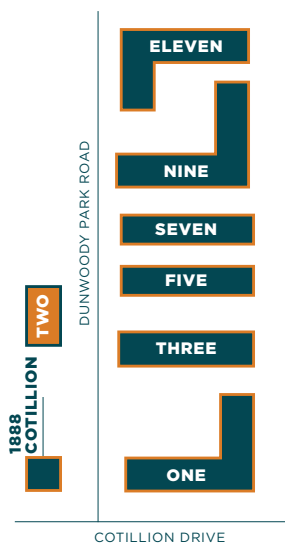
FORMER USE
ATLANTA SCHOOL OF MASSAGE

SUBMARKET
CENTRAL PERIMETER

SALE PRICE
\$280/SF

ZONING
O/I (OFFICE-INSTITUTION)

DUNWOODY



AMENITIES

TWO STORIES: ±14,170 SF PER FLOOR

AMPLE NATURAL LIGHTING

WIRED AT&T & COMCAST

NEAR DUNWOODY, CHAMBLEE AND MEDICAL CENTER MARTA RAIL STATIONS

LOCATED 2 MILES WEST OF I-85 AND 3 MILES EAST OF GA-400

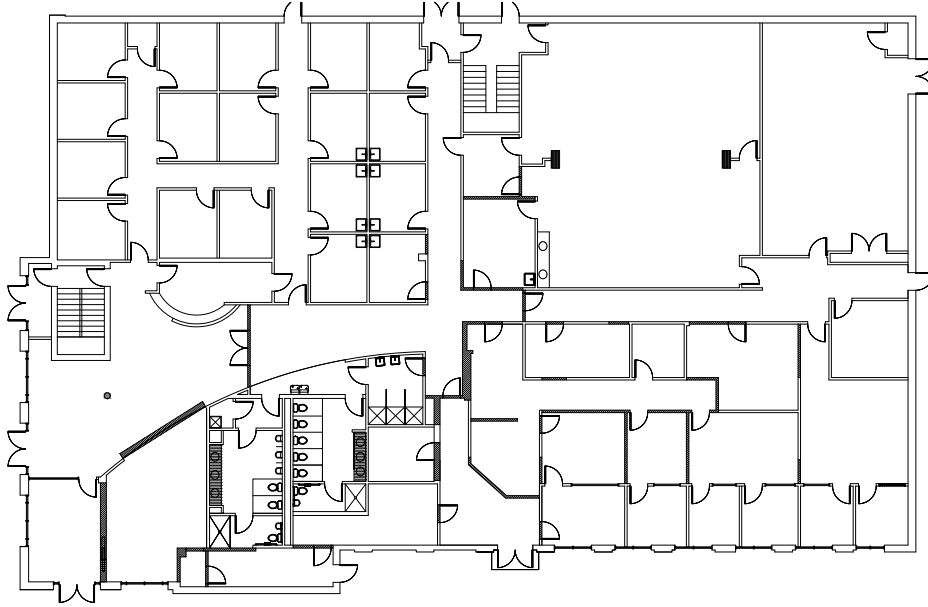
NEARBY RESTAURANTS AND SHOPPING

EASY ACCESS TO I-285 AND GA-400

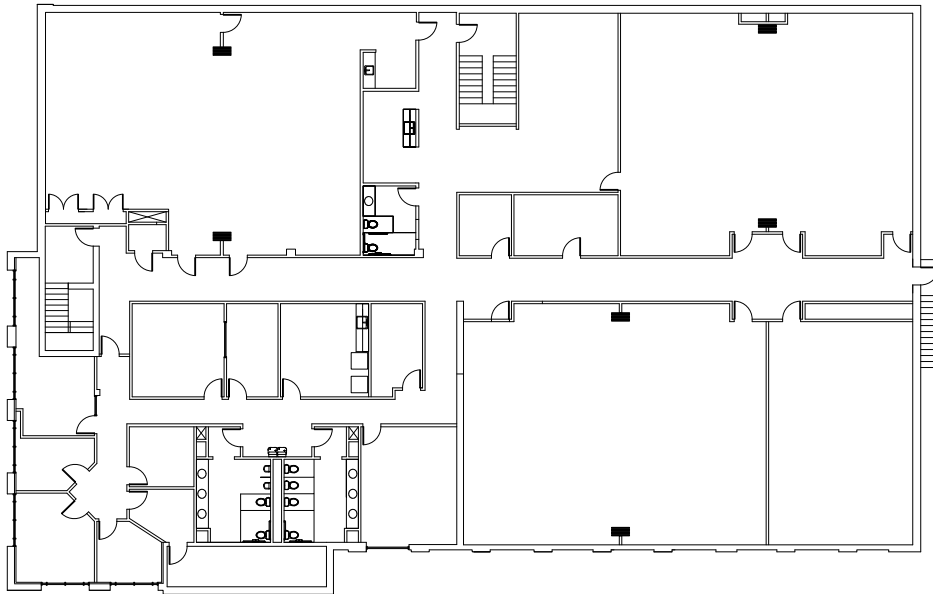
TWO

DUNWOODY PARK

BOTTOM FLOOR



TOP FLOOR



KEY



DUNWOODY  DUNWOODY 



P.X. HEAD
VICE PRESIDENT
404.272.3408
PKHEAD@SKCR.COM