

110 BUILDING | OFFICE SPACE IN MOUNTAIN BROOK

110 OFFICE PARK DRIVE | 35223

LEASE RATE: \$26.50/SF • FULL SERVICE

ONE SUITE AVAILABLE

AVAILABLE SPACE

2,721 SF

REMARKS

- 4-Story mid-rise with visibility to Highway 280
- Free surface parking
- Located in the popular Mountain Brook Office Park on Highway 280
- Easy access to Elton B Stephens Expressway, Highway 31, I-459 and Lakeshore Drive



NO OCCUPATIONAL TAX

Located within the tax friendly city limits of Mountain Brook



MIDTOWN SUBMARKET

Consistently the submarket with highest occupancy and Alabama's most popular



CENTRALLY LOCATED

Close proximity to the CBD, Homewood, Vestavia hills, and Mtn Brook

EXCLUSIVELY OFFERED BY
DAN LOVELL, SIOR, LEED AP
danl@grahamcompany.com

205•871•7100 | GrahamCompany.com



Graham & Co

Information deemed reliable but not guaranteed

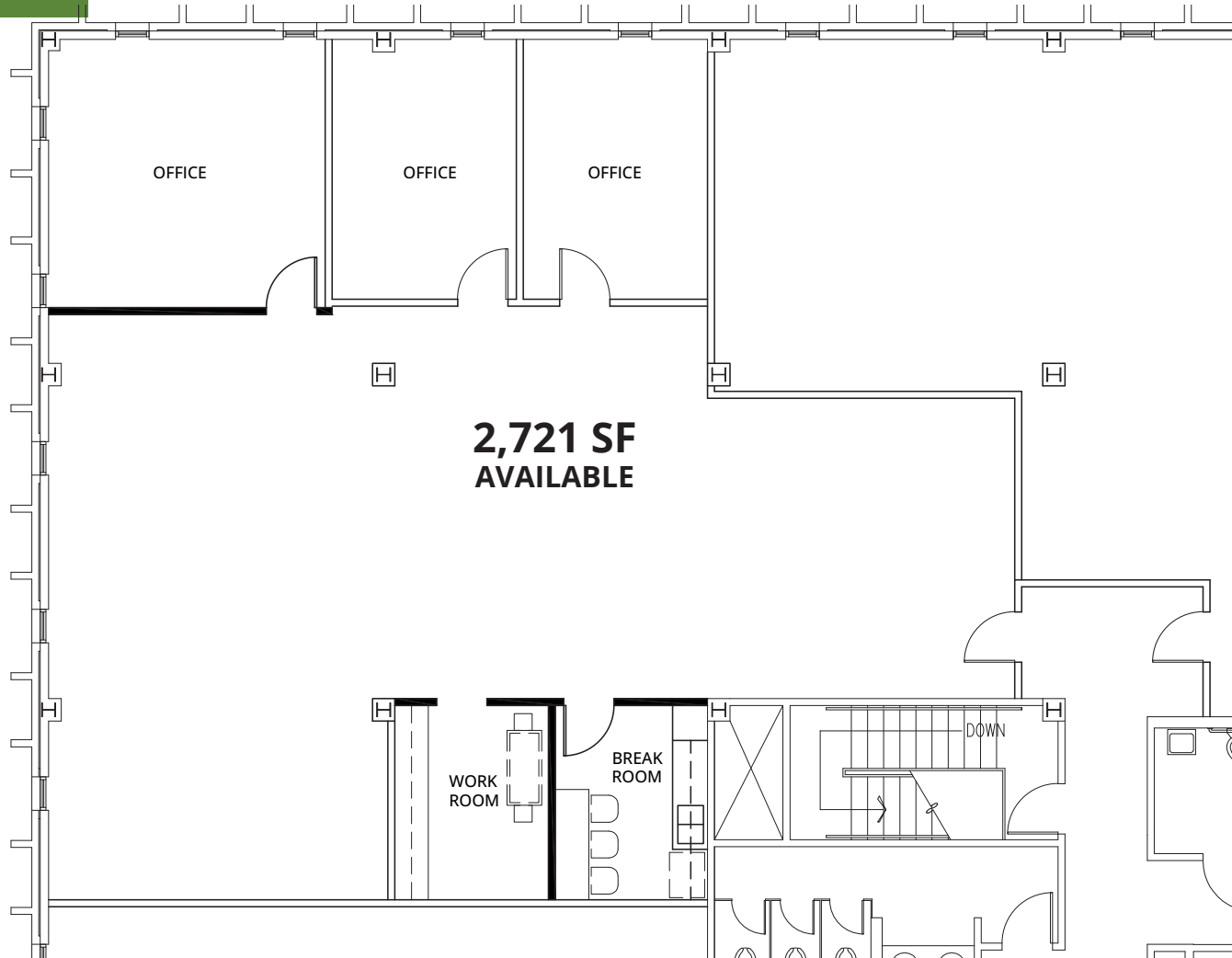
110 BUILDING | OFFICE SPACE IN MOUNTAIN BROOK

110 OFFICE PARK DRIVE | 35223

LEASE RATE: \$26.50/SF • FULL SERVICE

ONE SUITE AVAILABLE

FLOOR PLAN



EXCLUSIVELY OFFERED BY
DAN LOVELL, SIOR, LEED AP
danl@grahamcompany.com

205•871•7100 | GrahamCompany.com

Information deemed reliable but not guaranteed

