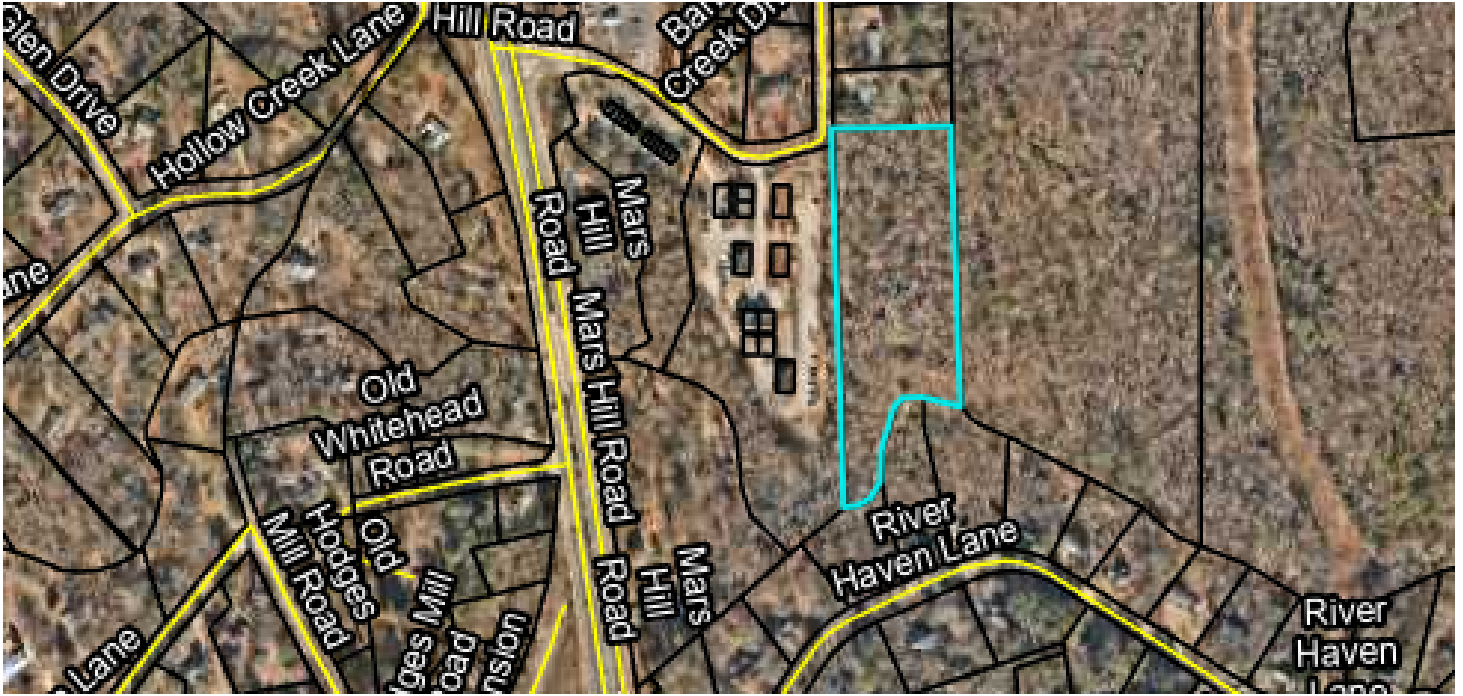


# SALE

1080 BARBER CREEK DRIVE

Watkinsville, GA 30677



## PROPERTY DESCRIPTION

This 4.55-acre property in Oconee County has already undergone the rezone process to O-I-P, approving 35,204 SF of office space and is awaiting its future development.

The property abuts phase 2 of the Barber Creek office park on its western side and 55+ undeveloped acres to the east.

## PROPERTY HIGHLIGHTS

## OFFERING SUMMARY

Sale Price:	\$699,000
Lot Size:	4.55 Acres

DEMOGRAPHICS	0.3 MILES	0.5 MILES	1 MILE
Total Households	39	205	661
Total Population	117	625	1,995
Average HH Income	\$138,543	\$140,774	\$143,078

**Roby Redwine**  
(706) 207-2942

**Katie Reeves**  
(706) 254-3446

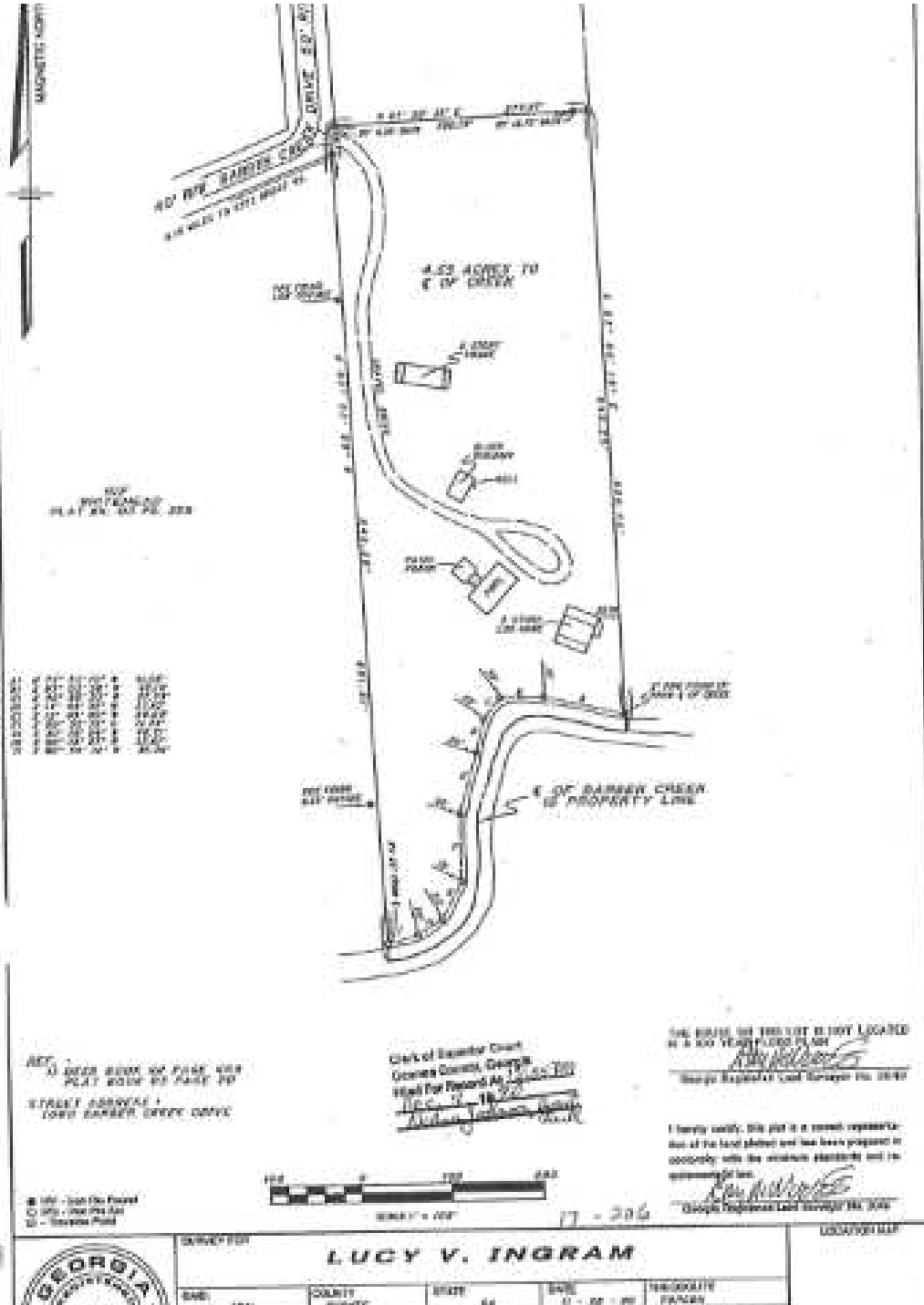


**COLDWELL BANKER  
COMMERCIAL**  
UPCHURCH REALTY

# SALE

## 1080 BARBER CREEK DRIVE

Watkinsville, GA 30677



**Roby Redwine**  
(706) 207-2942

**Katie Reeves**  
(706) 254-3446

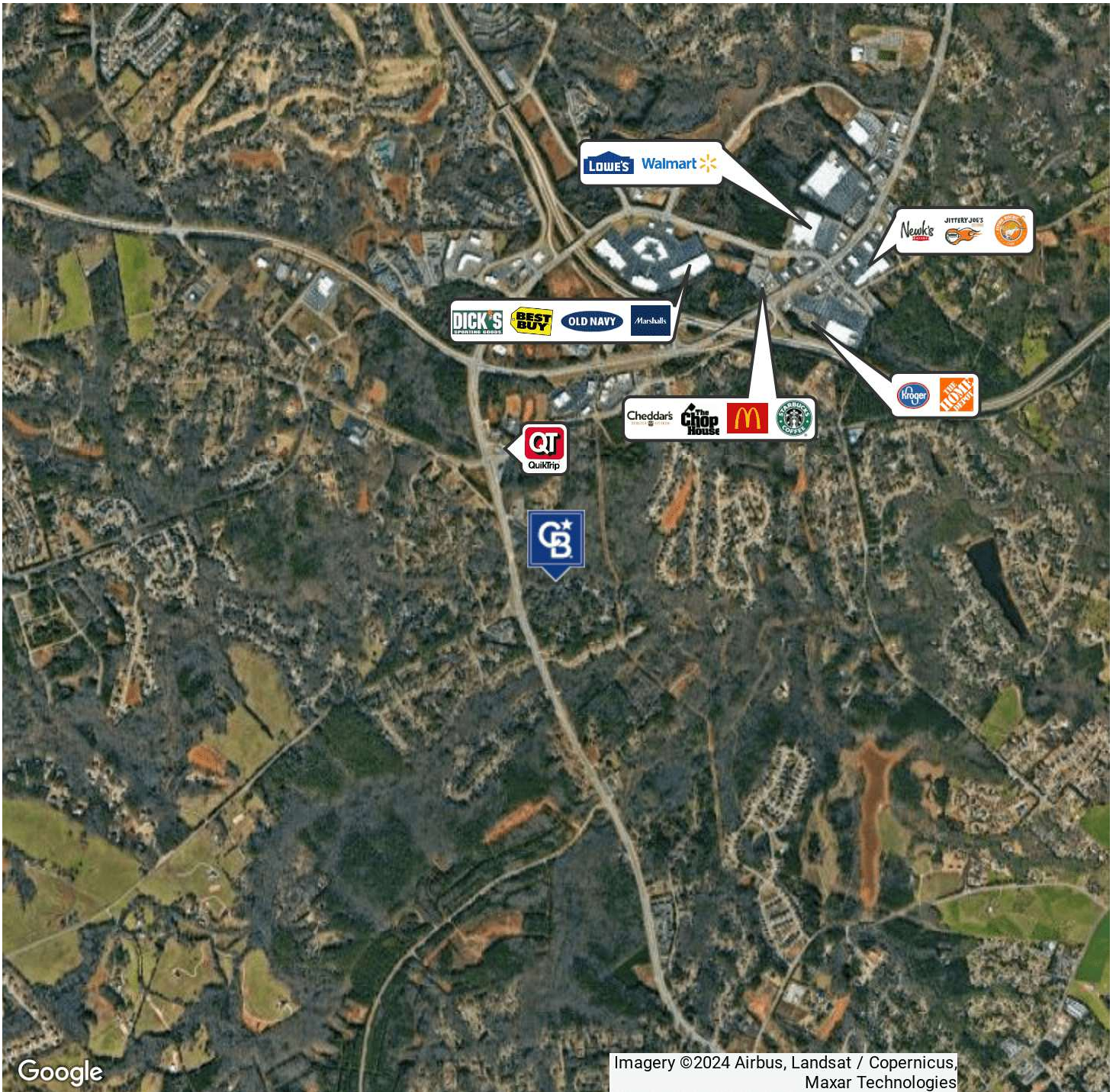


**COLDWELL BANKER  
COMMERCIAL**  
UPCHURCH REALTY

# SALE

## 1080 BARBER CREEK DRIVE

Watkinsville, GA 30677



Google

Imagery ©2024 Airbus, Landsat / Copernicus, Maxar Technologies

**Roby Redwine**  
(706) 207-2942

**Katie Reeves**  
(706) 254-3446

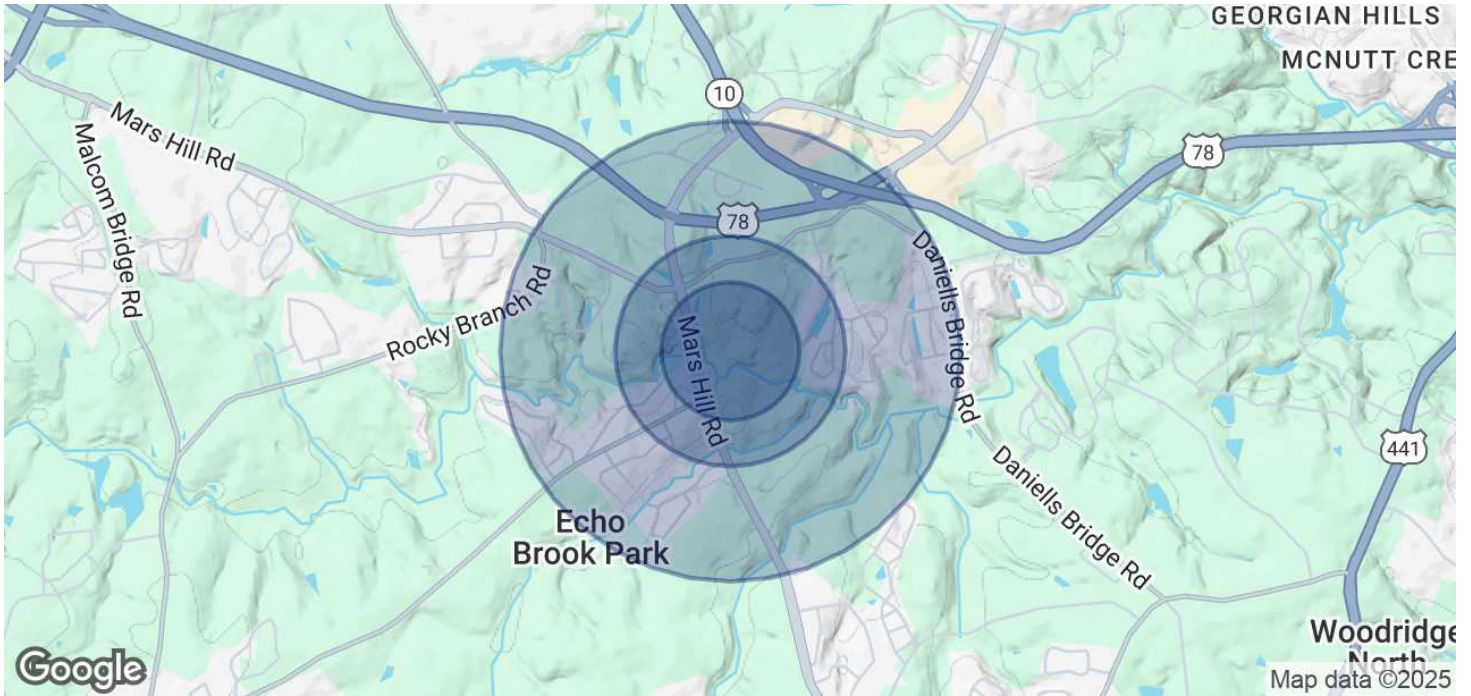


**COLDWELL BANKER  
COMMERCIAL**  
UPCHURCH REALTY

# SALE

## 1080 BARBER CREEK DRIVE

Watkinsville, GA 30677



### POPULATION

	0.3 MILES	0.5 MILES	1 MILE
Total Population	117	625	1,995
Average Age	38	38	39
Average Age (Male)	37	37	38
Average Age (Female)	40	40	40

### HOUSEHOLDS & INCOME

	0.3 MILES	0.5 MILES	1 MILE
Total Households	39	205	661
# of Persons per HH	3	3	3
Average HH Income	\$138,543	\$140,774	\$143,078
Average House Value	\$525,462	\$519,611	\$509,546

Demographics data derived from AlphaMap

**Roby Redwine**  
(706) 207-2942

**Katie Reeves**  
(706) 254-3446



**COLDWELL BANKER  
COMMERCIAL**  
UPCHURCH REALTY