

850 East 111th Place,
Los Angeles, CA 90059

Features

- Land Size: +/-157,905 SF (3.63 acres)
- Building Size: +/-11,000 SF (multiple structures)
 - » Maintenance Building: +/-5,500 SF (3 GL Doors)
- Zoning (simplified): M1
- Zoning (complete): M1-1-CPIO
- Jurisdiction: City of Los Angeles
- Location: Immediate Access to 110/105 Freeways
- Location: Moody's Analytics Scoring (1 (low) to 1000 (high))
 - » Access to Subway: 834 out of 1000 (very good)
 - » Access to Highway: 926 out of 1000 (very good)
- Amenities: Natural Gas Fueling Station (Use Permit Issued)
- Yard: Paved, Fenced, and Secure



Kyle Degener

Senior Vice President
+1 310 321 1805
kyle.degener@colliers.com

Lary Carlton

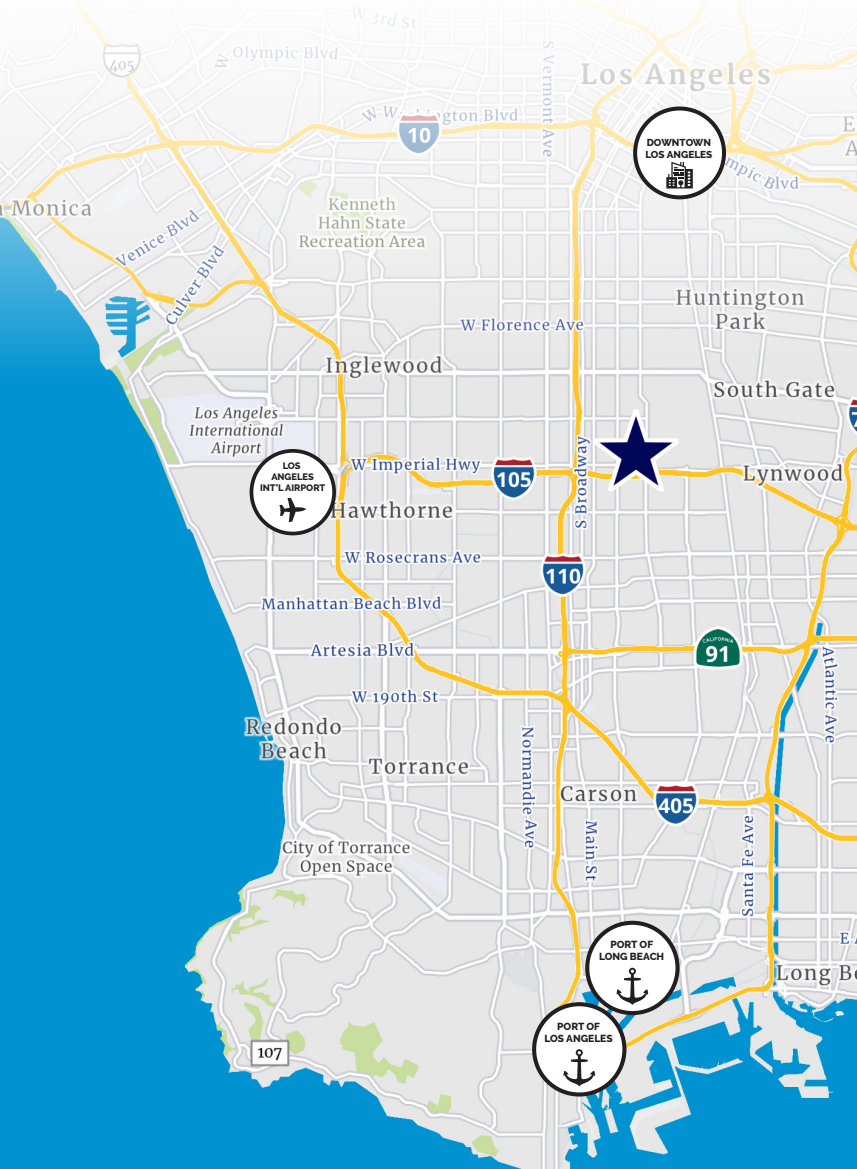
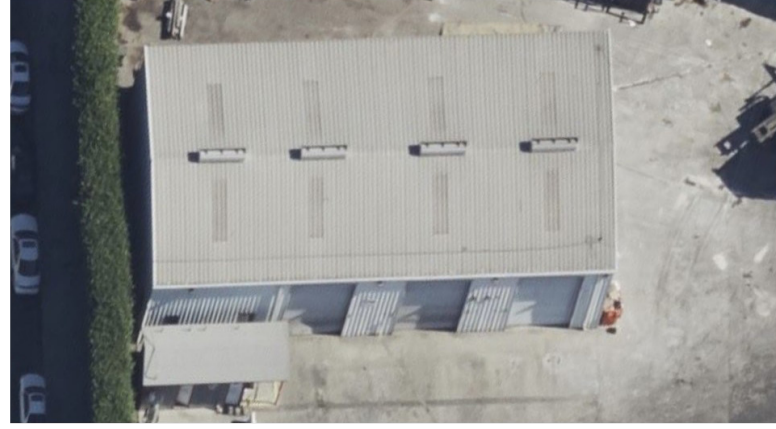
Senior Vice President
+1 562 547 8994
lary.carlton@colliers.com

Amanda DePierro

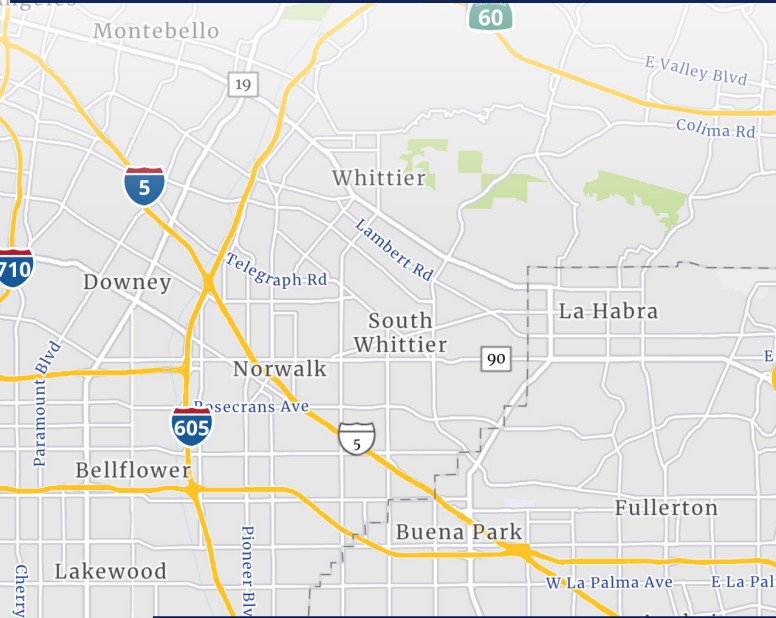
Associate Vice President
+1 310 321 1817
amanda.depierro@colliers.com

Colliers

Property Photos



Road Map



Approximate Distance from Subject Property

	Port of Long Beach	19.3 Miles
	Port of Los Angeles	15.7 Miles
	5 Freeway	12.2 Mile
	91 Freeway	6 Miles
	605 Freeway	10.3 Miles
	405 Freeway	6.7 Miles
	710 Freeway	6.2 Miles
	Los Angeles International Airport	10 Miles
	Downtown Los Angeles	9.8 Miles