

**SALE/
LEASE**

ZONED M-2

Midpoint Industrial Park

121 Midpoint Drive | Mineral, VA 23117



**COMMONWEALTH
COMMERCIAL**
Comprehensive Property Solutions



PROPERTY HIGHLIGHTS

- › 10,000± SF office/warehouse on 2.6± AC fenced and graveled yard
- › Zoned M-2 (heavy industrial) allowing for a wide variety of industrial uses
- › Midpoint between Charlottesville and Richmond off I-64 (30-minute to both markets)
- › Total site is 7.5± AC with one larger or two similarly sized buildings planned
- › Owner will build to suit for sale or lease
- › Call Agents For More Information

FOR MORE INFORMATION:

MICHAEL MAYHEW

Senior Associate

804-250-1345

mmayhew@commonwealthcommercial.com

BEN BRUNI, SIOR

Senior Vice President | Partner

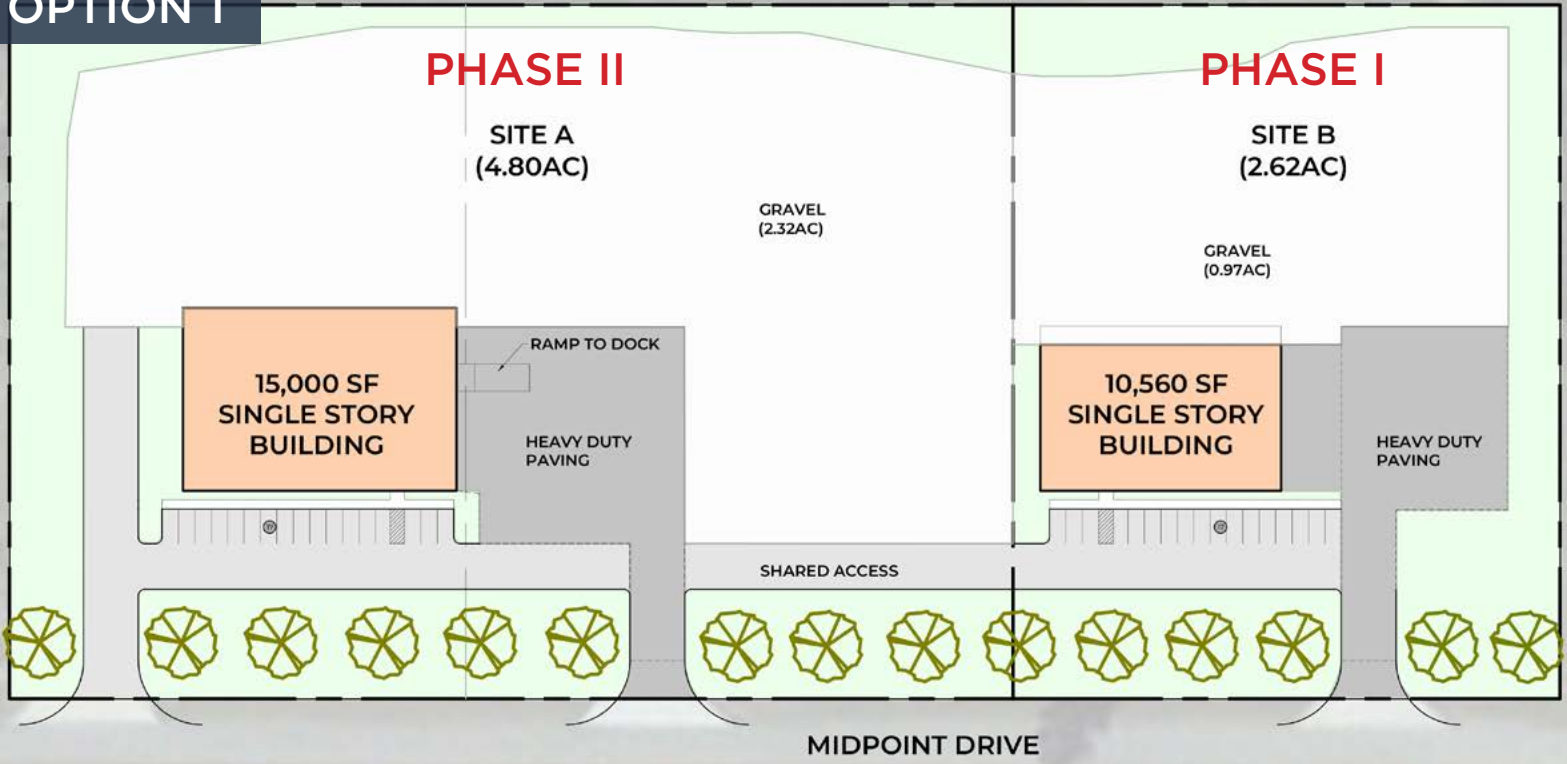
804-793-0046

bbruni@commonwealthcommercial.com

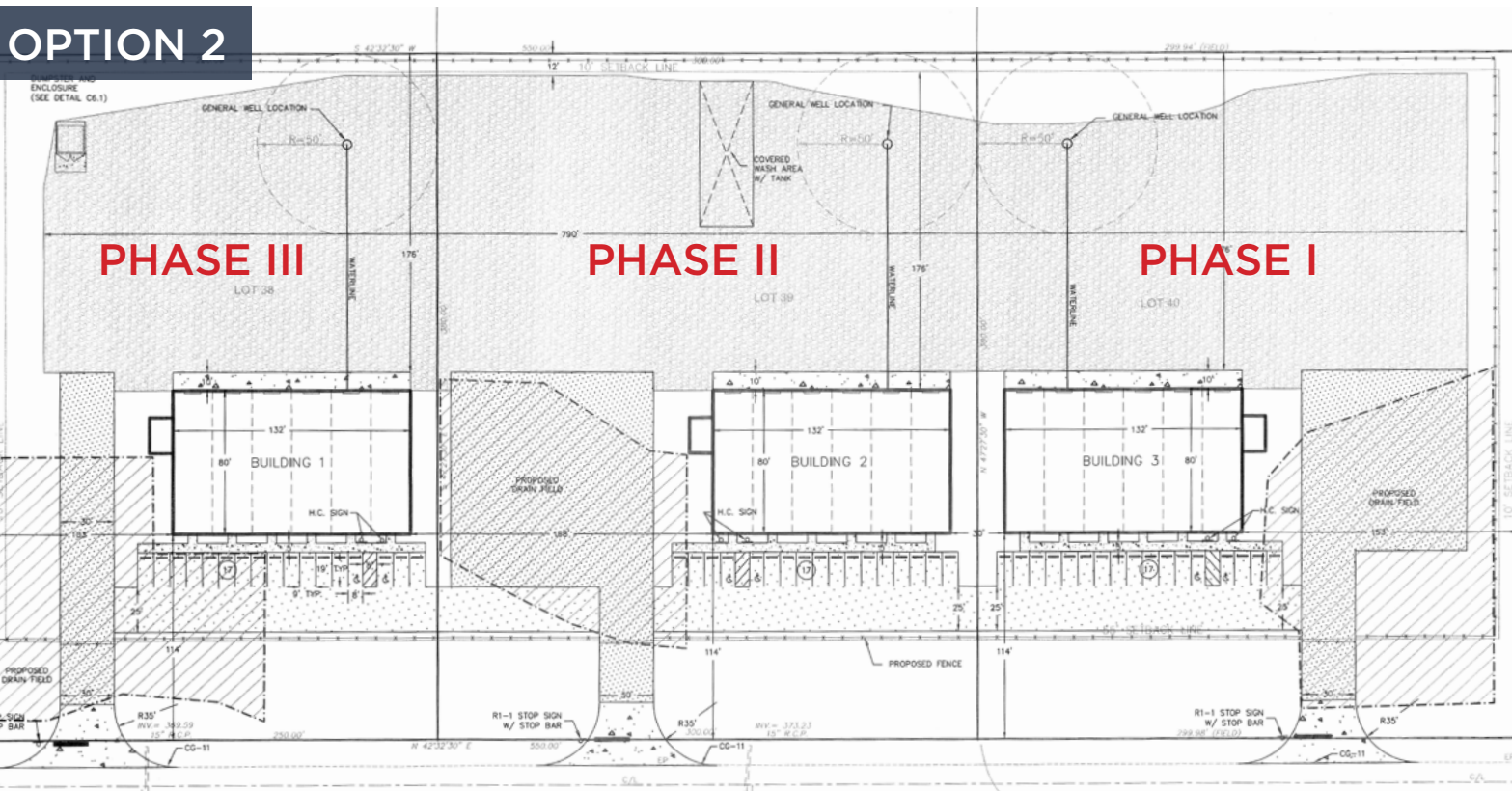
Commonwealth Commercial Partners, LLC represents the Tenant of this property. Information contained herein is deemed reliable but is not guaranteed.

SITE PLAN OPTIONS

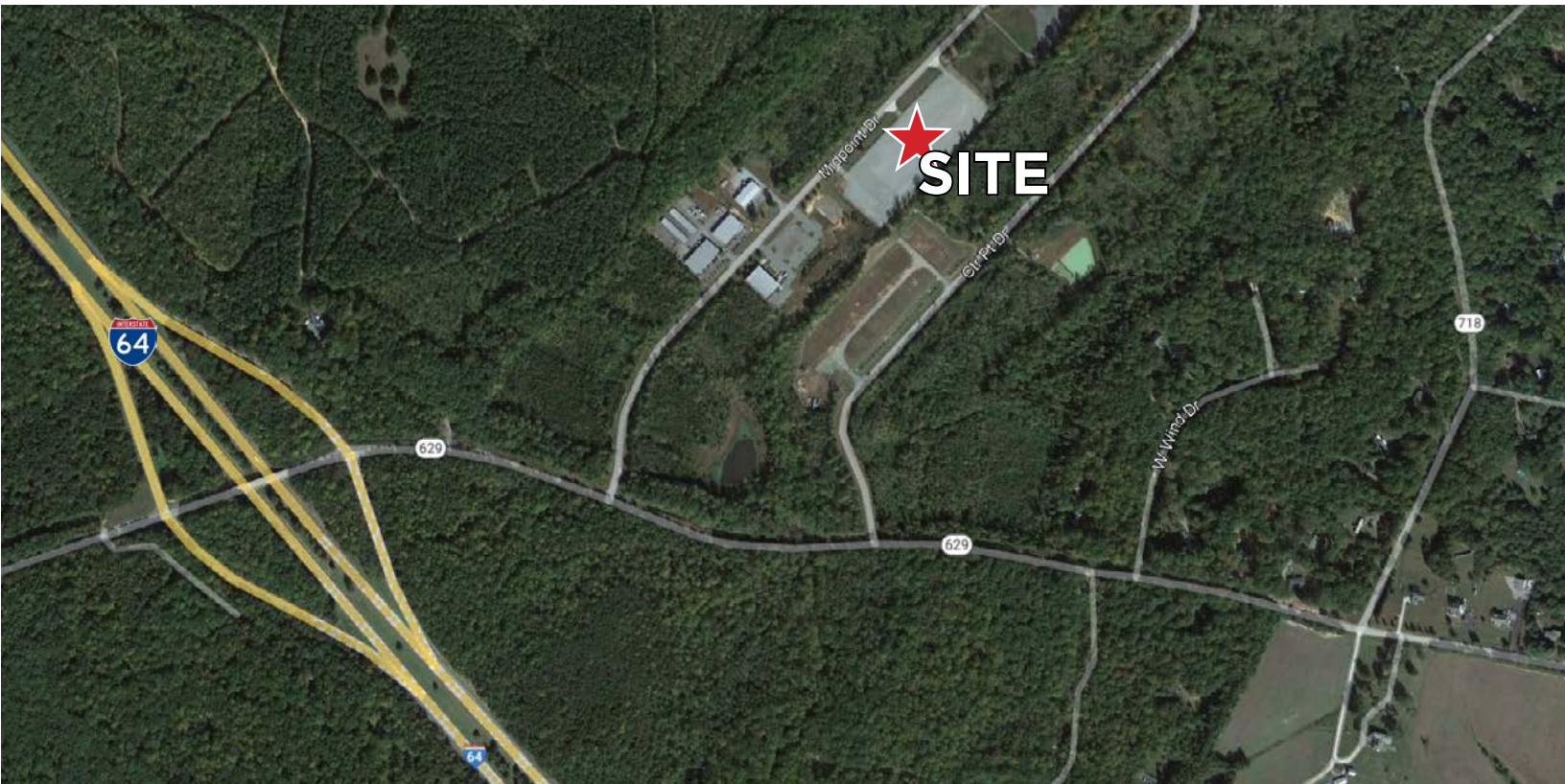
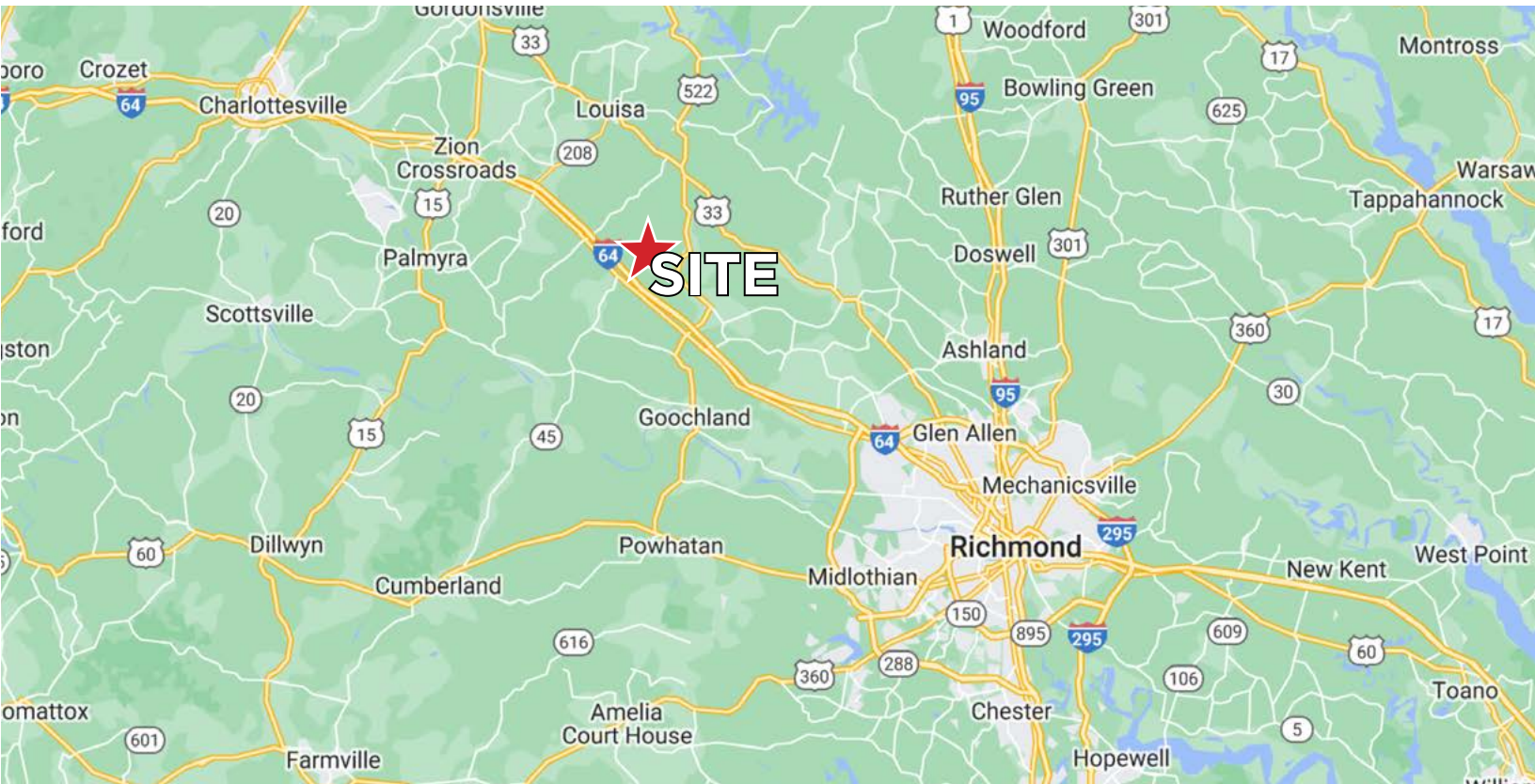
OPTION 1



OPTION 2



LOCATION MAPS



FOR SALE/LEASE | 121 MIDPOINT DRIVE | MINERAL, VA 23117