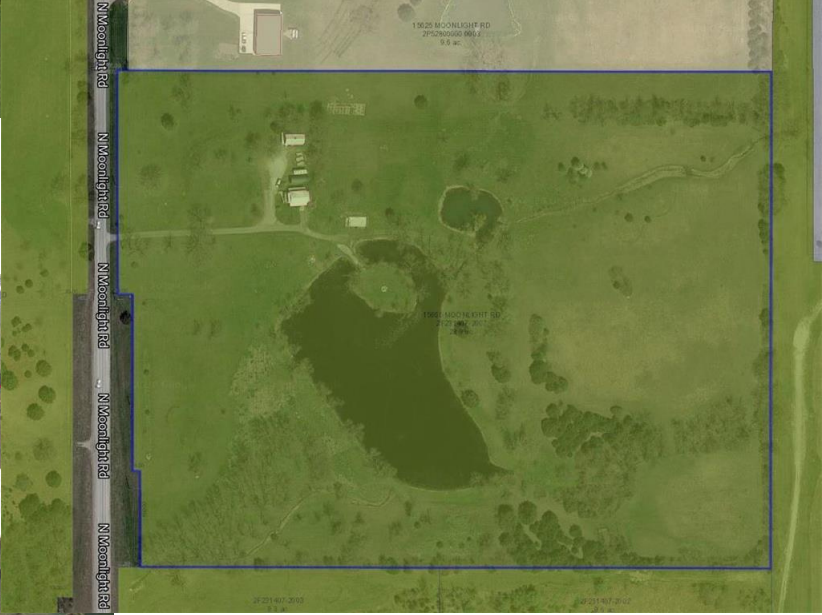




THE PERFECT PIECE OF COMMERCIAL PROPERTY! 29 ACRES M/L RIGHT NEXT TO NEW CENTURY AIR CENTER. WITHIN A 5 MILE RADIUS YOU HAVE 2 AMAZON FACILITIES, UNILEVER, COLEMAN, LPKC AND THE CITY OF GARDNER. EASY ACCESS TO I-35, 56 HWY AND THE SOUTH SIDE OF OLATHE, KS. 5 ACRE M/L POND AND LOTS OF NICE MATURE TREES ROUND OUT THIS PROPERTY. ONE LARGE APARTMENT COMMUNITY BEING BUILT JUST OVER A MILE AWAY. BIG THINGS ARE HAPPENING IN SOUTHERN JOHNSON COUNTY, DON'T LET YOUR COMPANY BE LEFT OUT.



15665
Moonlight
Road Gardner,
Kansas



PROPERTY FEATURES

PRICE: \$1,320,000
LOT: 29 ACRES +/-
MLS# 2243962

CROWN REALTY
202 E. MAIN ST.
GARDNER, KS
66030
Rich Melton
913-207-7152
Rich@CrownRealty.com