

PORT 106 BUILDING

6,040-14,457 Square Feet



Property Overview

Port 106 Industrial Center is a fully renovated 282,500 SF light industrial complex strategically located just south of Downtown Seattle in the Industrial District. Originally built in 1943 and extensively upgraded in 2008, the property features modern infrastructure, abundant loading options, and flexible layouts designed to meet a variety of industrial and manufacturing needs.

Space Availabilities

Suite	SF	Availability	Notes
4731	6,040	10/01/2025	2 offices, restroom, truck-height dock
4750	6,040	Now	Flexible layout, dock door, upgraded electrical service being added
4770B	14,457	60 Days	High-end finishes, conference room, break room, warehouse space

Key Highlights

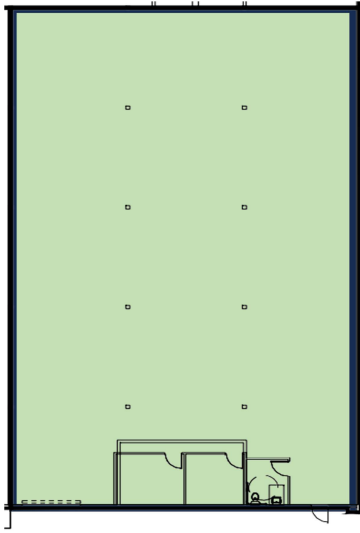
- Multiple truck-height docks + drive-up ramps
 - Phase electrical Ample parking on-site
- High Ceilings
- Minutes from I-5, Highway 99, Port of Seattle

Exclusively Marketed By:

DARRELL SANDERS
 (206) 910 5213
 Darrells@americanlifeinc.com

KEN CLARK
 (206) 971-7824
 Ken.Clark@americanlifeinc.com

Suite 4731



Suite 4750

