

1,968 SF OFFICE OR MEDICAL SPACE FOR IMMEDIATE SUBLEASE

2811 WILSHIRE BLVD

Suite 900

CBRE



FOR SUBLEASE

1,968 RSF
Square Footage

\$5.95 PSF, FSG
Asking Rate

THROUGH JAN. 31, 2030
Sublease Term

5
Window Offices, Kitchen, Reception Area

FEATURES:

Premier Class A Medical Office Building

Incredible Ocean and Mountain Views

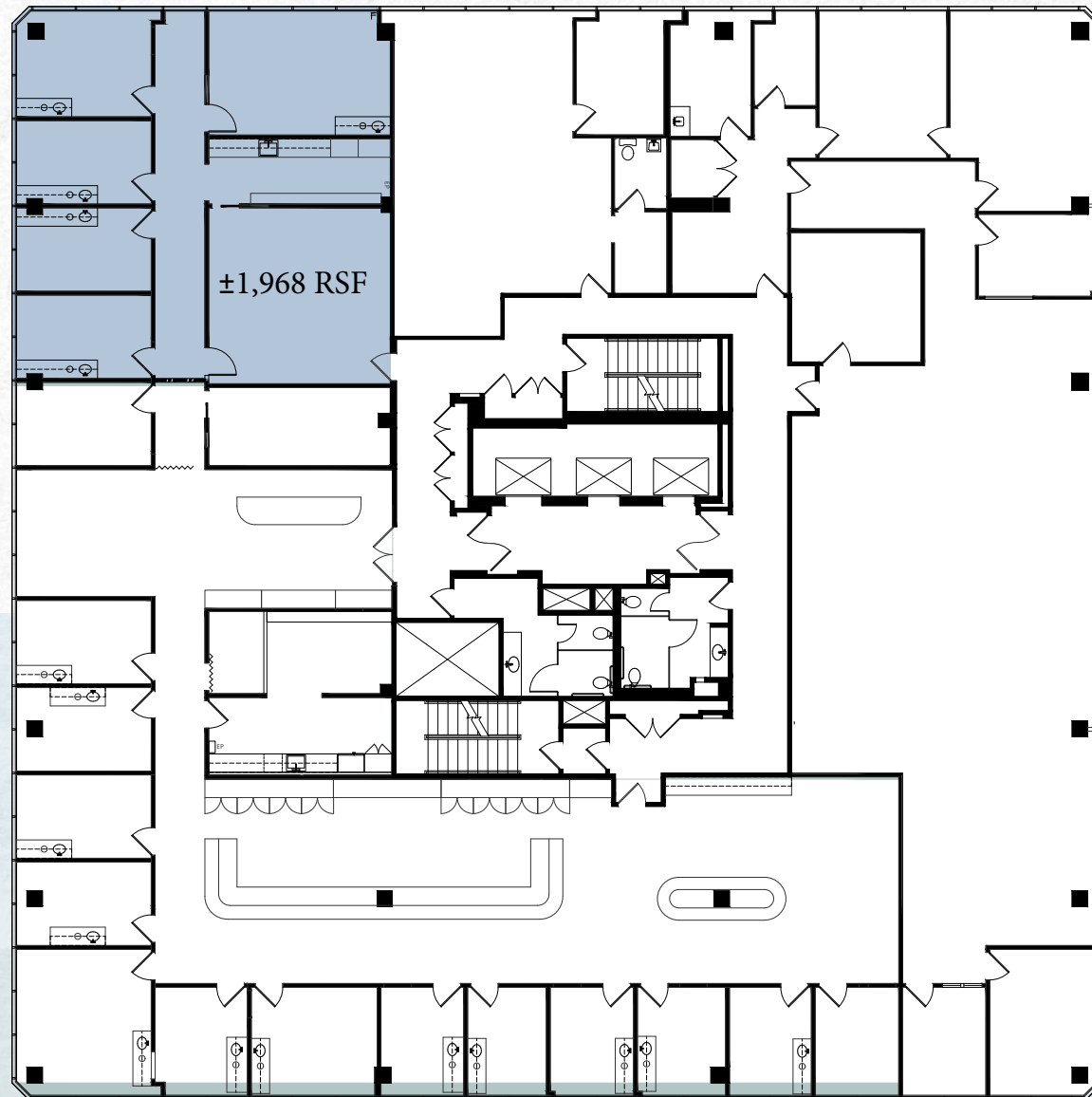
Exterior and Interior Renovations Recently
Completed

Quick Access to Providence Saint John's Health
Center

On-site Sundry Shop and Walking Distance to
Numerous Amenities, including Erewhon directly
across the street

FLOOR PLAN

1,968 RSF



AMENITY MAP



1,968 SF
FOR SUBLEASE

2811 WILSHIRE BLVD

Suite 900



MICHELLE ESQUIVEL-HALL
Executive Vice President

+1 310 550 2525
michelle.esquivel@cbre.com

Lic. 01290582

CBRE

© 2025 CBRE, Inc. All rights reserved. This information has been obtained from sources believed reliable but has not been verified for accuracy or completeness. CBRE, Inc. makes no guarantee, representation or warranty and accepts no responsibility or liability as to the accuracy, completeness, or reliability of the information contained herein. You should conduct a careful, independent investigation of the property and verify all information. Any reliance on this information is solely at your own risk. CBRE and the CBRE logo are service marks of CBRE, Inc. All other marks displayed on this document are the property of their respective owners, and the use of such marks does not imply any affiliation with or endorsement of CBRE. Photos herein are the property of their respective owners. Use of these images without the express written consent of the owner is prohibited.