



**PINNACLE  
REALTY**  
OF NEW YORK, LLC

EXCLUSIVE LISTING

FOR LEASE



1209 BRONX RIVER AVENUE







BRONX, NY 10472

# 10,000 Sq. Ft. Drive In Lower Level

Newly Renovated

TYPE

**Warehouse**

 <b>SQUARE FT.</b> <b>10,000</b> RSF	 <b>ZONING</b> <b>M1-1</b>
 <b>CLEAR HEIGHT</b> <b>12'</b>	 <b>PARCEL ID</b> <b>3769</b> BLOCK
 <b>LOADING</b> <b>1</b> Drive-down ramp	 <b>60</b> LOT

PRICE

**Upon Request**

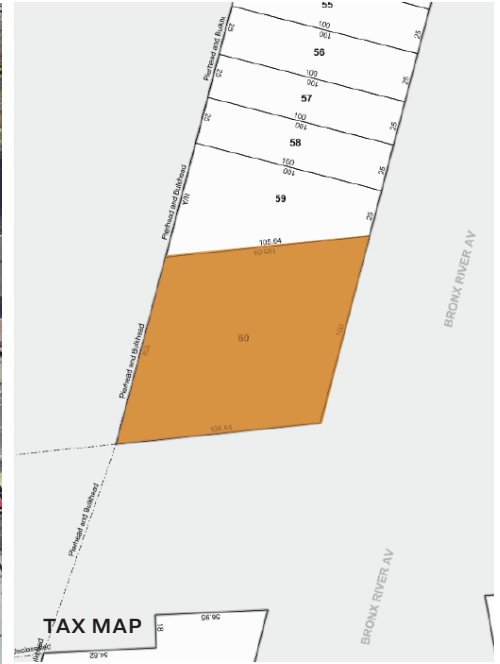
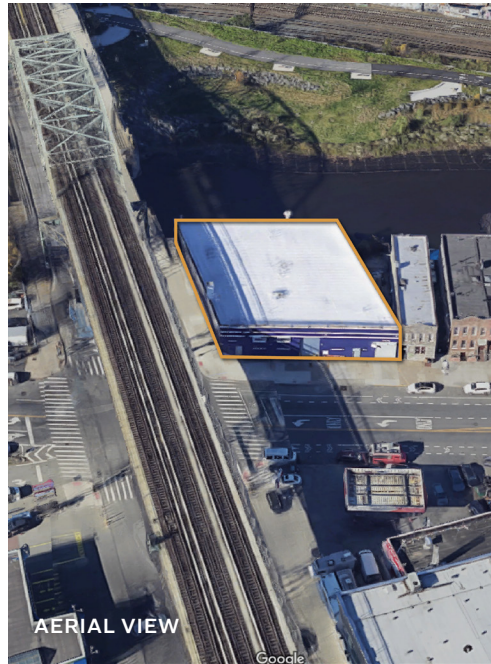
718-784-8282 / PINNACLERENY.COM

All information is from sources deemed reliable and is submitted subject to errors, omission, changes of price or other conditions, prior sale, rent and withdrawal without notice.

# Property Overview

## FEATURES

- 100' x 100' Warehouse
- 12' Ceiling Height
- 1 Drive-Down Door
- Gas Heat
- LED Lighting
- Newly Renovated & Painted
- Corner Bronx River Ave. & Westchester Ave.



## TRANSPORTATION



WHITLOCK AVE



WESTCHESTER AVENUE

BRUCKNER BOULEVARD

SHERIDAN EXPRESSWAY

BRUCKNER EXPRESSWAY



BX4, BX4A, BX27:  
WESTCHESTER  
AVE/COLGATE AVE



**PINNACLE  
REALTY**  
OF NEW YORK, LLC

34-07 Steinway Street, Suite 202

Long Island City, NY 11101

718-784-8282

[pinnaclereny.com](http://pinnaclereny.com)

FOR MORE INFORMATION ABOUT THIS  
PROPERTY CONTACT EXCLUSIVE AGENTS:



**ARIEL CASTELLANOS**

Associate Broker

[acastellanos@pinnaclereny.com](mailto:acastellanos@pinnaclereny.com)

718-371-6412



**FEDERICO MAZZEO**

Salesperson

[fmazzeo@pinnaclereny.com](mailto:fmazzeo@pinnaclereny.com)

718-371-6424