

# 4895 Washington St.

Denver, CO 80216

**FOR SALE: \$2,750,000**



## **SMALL BAY INDUSTRIAL INVESTMENT, OWNER-USER, OR REDEVELOPMENT OPPORTUNITY**

**4895 Washington St.** is a 13,881 SF industrial building located on a prominent 28,675 SF corner lot at 49th & Washington in Denver's Globeville neighborhood. Zoned I-MX-3, this highly functional property features fenced yard space, drive-in access, and a location at the cross-roads of Denver's industrial and urban redevelopment zones. With immediate proximity to major highways and surrounded by transformative development projects, this asset presents a compelling opportunity for owner-users, investors, and developers alike.

**NAI**Shames Makovsky

**SOLOMON STARK**

(303) 565 3032

[ss Stark@shamesmakovsky.com](mailto:ss Stark@shamesmakovsky.com)

**SANDY FELD**

(303) 565 3024

[sfeld@shamesmakovsky.com](mailto:sfeld@shamesmakovsky.com)



## Property Facts

Lot Size	28,675 SF
Building Size	13,881
Zoning	I-MX-3
Year Built	1950
Sprinklered	Yes
Clear Height	12'-15'
Power	3 Phase
Loading	5 Drive-In Doors
Property Taxes	\$37,676.42
Occupancy*	100% (4 Tenants)

\*Contact broker for lease information

## Sale Price

**\$2,750,000**

Price/SF Bldg

**\$198.11**

Price/SF Land

**\$95.90**



## Investment Highlights

**Owner-User, Investor, or Developer Play** - The property is currently built out as 4 small bay industrial units. It is fully occupied on month to month and short-term leases at well below market rates. Whether you're looking to occupy, increase rental rates, or land bank for future redevelopment, this site checks all the boxes with location, flexibility, and growth potential.

**Prime Corner Location in Globeville** - Positioned on the hard corner of 49th & Washington, this property offers exceptional exposure, easy access, and secure yard space - right in the middle of one of Denver's most dynamic transitioning neighborhoods.

**I-MX-3 Zoning - Maximum Flexibility** - Industrial Mixed-Use zoning allows for a wide variety of uses: industrial, light manufacturing, flex, showroom, or future mixed-user redevelopment. This flexibility opens doors for both immediate use and long-term repositioning.

**Secure Yard + Drive-In Access** - Fully fenced yard space is ideal for outdoor storage. Drive-in access makes the site operationally efficient for logistics, trades, or service-based users.

**Central Infill Location with Excellent Connectivity** - Just minutes from I-70, I-25, and in close proximity to future transit enhancements tied to National Western Center and Fox Park developments.

**Path of Progress** - Globeville is transitioning from traditional industrial use toward a dynamic blend of production, creative, and mixed-use developments. 4895 Washington sits at the center of this evolution.



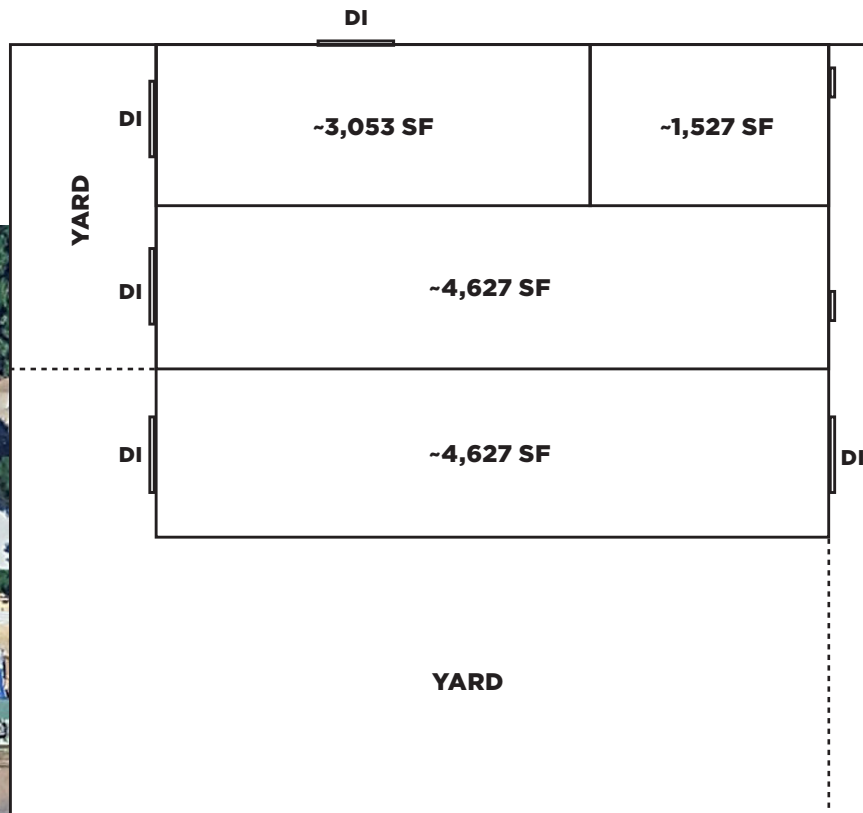
# Floorplan



49TH ST.



WASHINGTON ST.





## Photos





Aerial

INTERSTATE  
25

BROADWAY

GLOBEVILLE

SITE

WASHINGTON ST.

INTERSTATE  
70

E. 45TH AVE.

N



**Aerial**

**DOWNTOWN  
DENVER**

**SUNNYSIDE**

INTERSTATE  
**70**

INTERSTATE  
**25**

INTERSTATE  
**70**

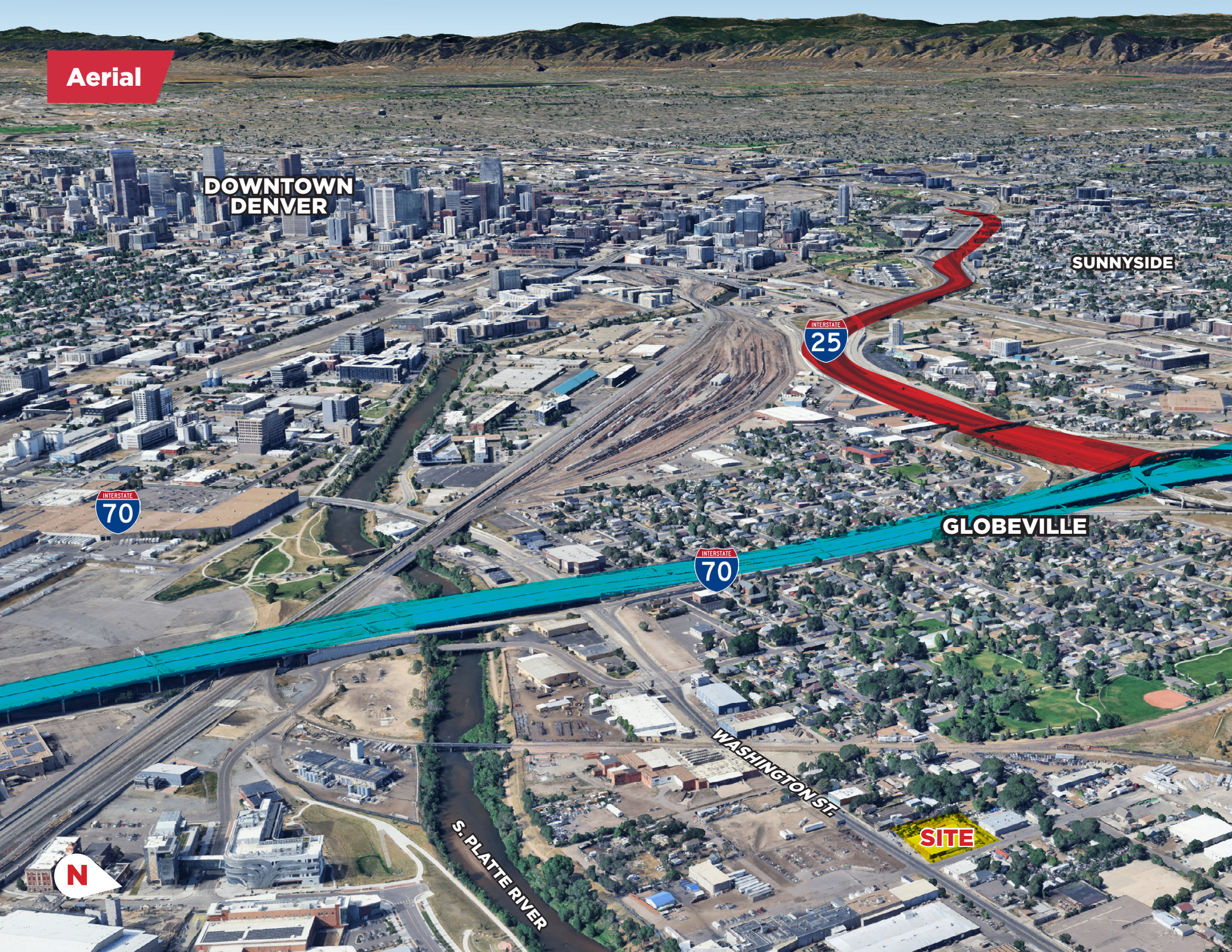
**GLOBEVILLE**

**WASHINGTON ST**

**S. PLATE RIVER**

**SITE**

**N**







## Major Nearby Developments

### National Western Center (NWC)

- Location: Approximately 1.5 miles southwest of 5090 Colorado Blvd
- Overview: A \$1 billion+ public-private redevelopment transforming the historic stockyards into a year-round destination for education, agriculture, and entertainment.
- Key Features: New event venues, CSU Spur campus, and infrastructure improvements enhancing connectivity and economic activity in the area.



### Fox Park

- Location: About 2 miles southwest in the Globeville neighborhood
- Overview: A 41-acre master-planned community featuring over 3 million square feet of mixed-use development, including office, residential, retail, and public spaces.
- Impact: Expected to be a significant catalyst for growth and revitalization in the surrounding industrial areas.



### Central 70 Project

- Location: Directly accessible via I-70, adjacent to 5090 Colorado Blvd
- Overview: A major infrastructure project that has reconstructed a 10-mile stretch of I-70, including the addition of express lanes and the removal of the viaduct between Brighton and Colorado Boulevards.
- Benefits: Improved traffic flow, safety, and connectivity, directly benefiting logistics and transportation for industrial properties in the vicinity.



### South Platte River Revitalization

- Location: Approximately 2 miles west
- Overview: Ongoing efforts to restore and enhance the South Platte River corridor, including environmental restoration, trail expansions, and the creation of new public spaces.
- Relevance: Enhances the overall livability and attractiveness of nearby neighborhoods, potentially increasing property values.



### Globeville-Elyria-Swansea Plan

- City-led neighborhood revitalization focused on housing, business, and infrastructure investment





## Demographics

	1 MILE	3 MILES
Population	4,340	79,161
Households	1,347	29,683
Median HH Income	\$63,582	\$82,748
Average HH Income	\$88,131	\$110,920
Median Home Value	\$335,429	\$519,677
Daytime Employees	6,540	75,436





The information contained herein does not purport to provide a complete or fully accurate summary of the Property or any of the documents related thereto, nor does it purport to be all-inclusive or to contain all of the information which prospective buyers may need or desire. All financial projections are based on assumptions relating to the general economy, competition, and other factors beyond the control of the Owner and Broker and, therefore, are subject to material variation. This Marketing Package does not constitute an indication that there has been any change in the business or affairs of the Property or the Owner since the date of preparation of the information herein. Additional information and an opportunity to inspect the Property will be made available to interested and qualified prospective buyers.

Neither Owner nor Broker nor any of their respective officers, Agents or principals has made or will make any representations or warranties, express or implied, as to the accuracy or completeness of this Marketing Package or any of its contents, and no legal commitment or obligation shall arise by reason of the Marketing Package or its contents. Analysis and verification of the information contained in the Marketing Package is solely the responsibility of the prospective buyer, with the Property to be sold on an as is, where-is basis without any representations as to the physical, financial or environmental conditional of the Property.

Owner and Broker expressly reserve the right, at their

sole discretion, to reject any or all expressions of interest or offers to purchase the Property and/or terminate discussions with any entity at any time with or without notice. Owner has no legal commitment or obligations to any individual or entity reviewing the Marketing Package or making an offer to purchase the Property unless and until such sale of the Property is approved by Owner in its sole discretion, a written agreement for purchase of the Property has been fully delivered, and approved by Owner, its legal counsel and any conditions to the Owner's obligations there under have been satisfied or waived.

This Marketing Package and its contents, except such information which is a matter of public record or is provided in sources available to the public (such contents as so limited herein called the "Contents"), are of a confidential nature. By accepting this Marketing Package, you unconditionally agree that you will hold and treat the Marketing Package and the Contents in the strictest confidence, that you will not photocopy or duplicate the Marketing Package or any part thereof, that you will not disclose the Marketing Package or any of the Contents to any other entity (except in the case of a principal, who shall be permitted to disclose to your employees, contractors, investors and outside advisors retained by you, or to third-party institutional lenders for financing sought by you, if necessary, in your opinion, to assist in your determination of whether or not to make a proposal) without the prior authorization of the

Owner or Broker, and that you will not use the Marketing Package or any of the Contents in any fashion or manner detrimental to the interest of the Owner or Broker.

**NAI**Shames Makovsky

1400 Glenarm Place, Suite 100  
Denver, CO 80202  
naishamesmakovsky.com

**SOLOMON STARK**

(303) 565 3032  
sstark@shamesmakovsky.com

**SANDY FELD**

(303) 565 3024  
sfeld@shamesmakovsky.com





**4895 Washington St.**  
**Denver, CO 80216**

**NAI**Shames Makovsky

**SOLOMON STARK**  
(303) 565 3032  
[ssark@shamesmakovsky.com](mailto:ssark@shamesmakovsky.com)

**SANDY FELD**  
(303) 565 3024  
[sfeld@shamesmakovsky.com](mailto:sfeld@shamesmakovsky.com)