



FOR SALE

100-300 Nordson Dr | Amherst, OH
28601 Clemens Rd | Westlake, OH

268,100 SF
4 Buildings available between 2 locations



268,100 SF

Address:

100-300 Nordson Drive | Amherst, OH
28601 Clemens Rd | Westlake, OH

Counties:

Lorain and Cuyahoga

Total Size:

268,100 SF

Lot Size:

48.3 AC

Zoning

I1 – Industrial and OL

Available Space:

- 100 Nordson: 71,500 SF to be leased back by Nordson through 2028
- 200 Nordson: 69,000 SF to be leased back by Nordson through 2028
- 300 Nordson: 99,600 SF available Q3 2026
- 28601 Clemens: 28,000 SF available Q3 2026



Property Description



100 Nordson Drive | Amherst, OH

Built in 1996, this ±71,500 SF industrial facility sits on 12.28 acres in Amherst, Ohio. The building features ±48,100 SF of warehouse space and ±23,400 SF of office, with 18' clear height, one dock, and one drive-in door. With heavy power, 30' column spacing, gas heat and wet sprinklers, the property is well-equipped for light manufacturing or distribution.

Property Amenities:

- Campus-like setting
- Well-maintained corporate facility
- Signage available
- Significant R&D space with corresponding amenities
- Blue Aluminum updated air distribution system
- On-site substation
- 67 kVa power line
- Convenient access to turnpike
- Private road access to the campus

Distance to Highways

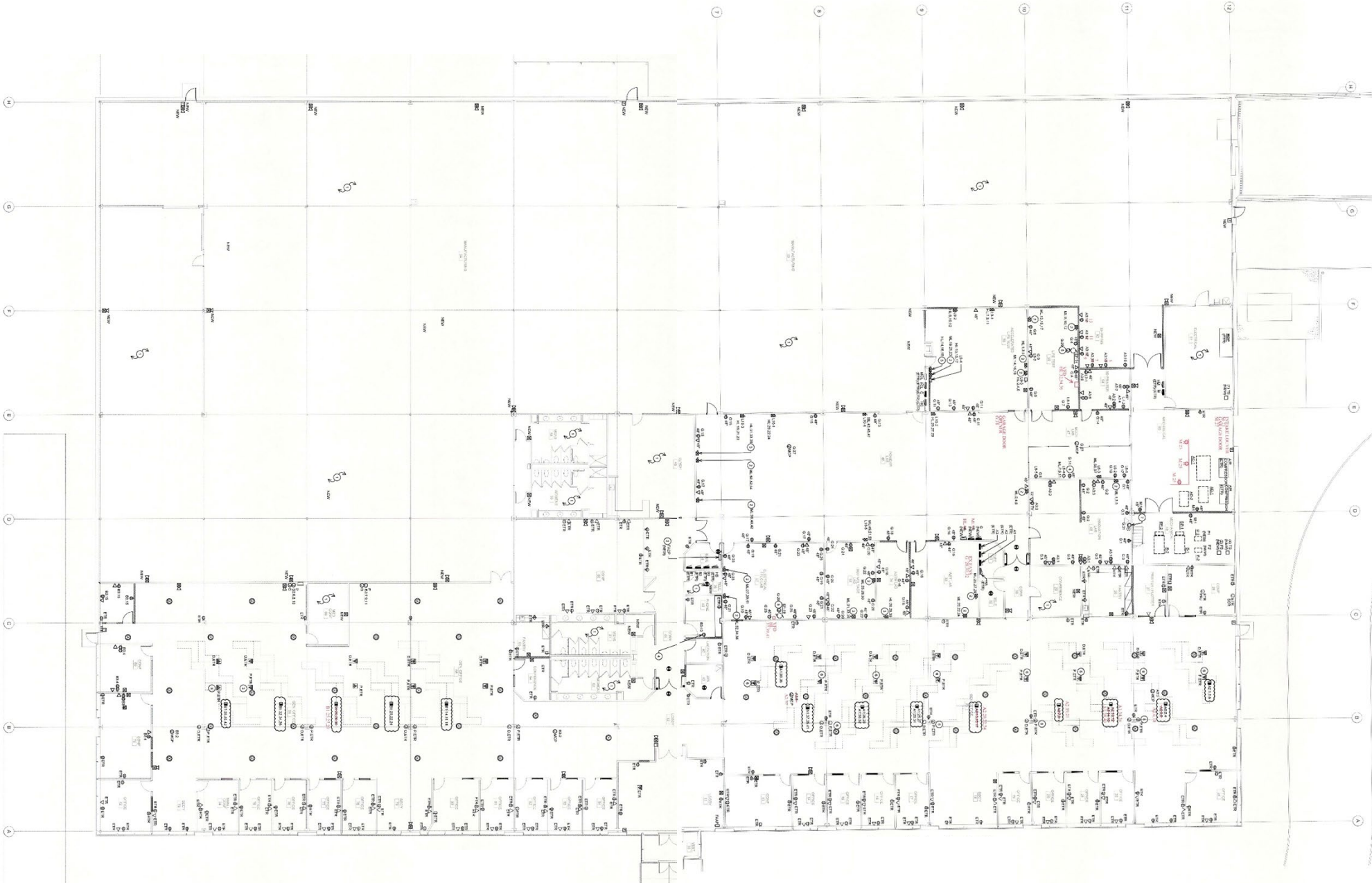
- SR 58 – 0.42 Miles
- I-90 / I-80 – 1.2 Miles
- Route 2 – 2.1 Miles

Property Detail

Address:	100 Nordson Dr
City:	Amherst
State:	Ohio
Zip:	44001
County:	Lorain
School District:	Amherst CSD
Parcel #'s:	05-00-037-115-053
Acres:	12.28
Zoning:	I1 - Industrial
Total SF:	71,500
Office SF:	23,400
Warehouse SF:	48,100
Year Built:	1996
Clear Height:	18'
Docks:	1 (+1)
Drive-Ins:	1 (11'x14'9")
Column Spacing:	30'x30'
Power:	3000 Amps 3-Phase 480V
Office HVAC:	Yes
Warehouse HVAC:	Yes
Sprinklers:	Wet
Utility Providers	
Electric	Ohio Edison
Gas	Columbia Gas
Water	City of Amherst
Sewer	City of Amherst

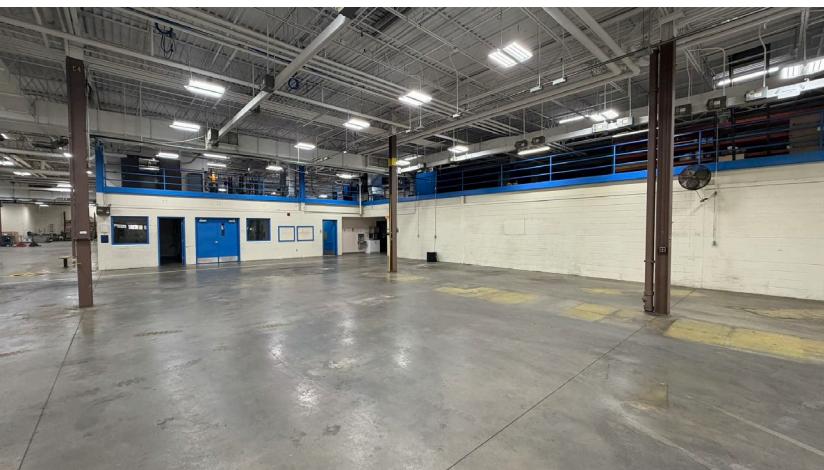
Property Floor Plan

100 Nordson Drive | Amherst, OH



Note: these two plans were adjusted to fit together to approximate one clean floor plan.

Property Description



200 Nordson Drive | Amherst, OH

Built in 1984, this ±69,000 SF facility sits on 12.15 industrial acres in Amherst, Ohio. The property features ±63,600 SF of office space and ±5,400 SF of warehouse, with a 18' clear height. Functional features include an exterior dock, drive-in door, heavy power with ample distribution throughout, and air line distribution.

Property Amenities:

- Campus-like setting
- Well-maintained corporate facility
- Signage available
- Significant power distribution within/throughout.
- Two (2) 5T Bridge Cranes
- Floor drains.
- High-end compressors and air distribution.
- Convenient access to turnpike

Distance to Highways

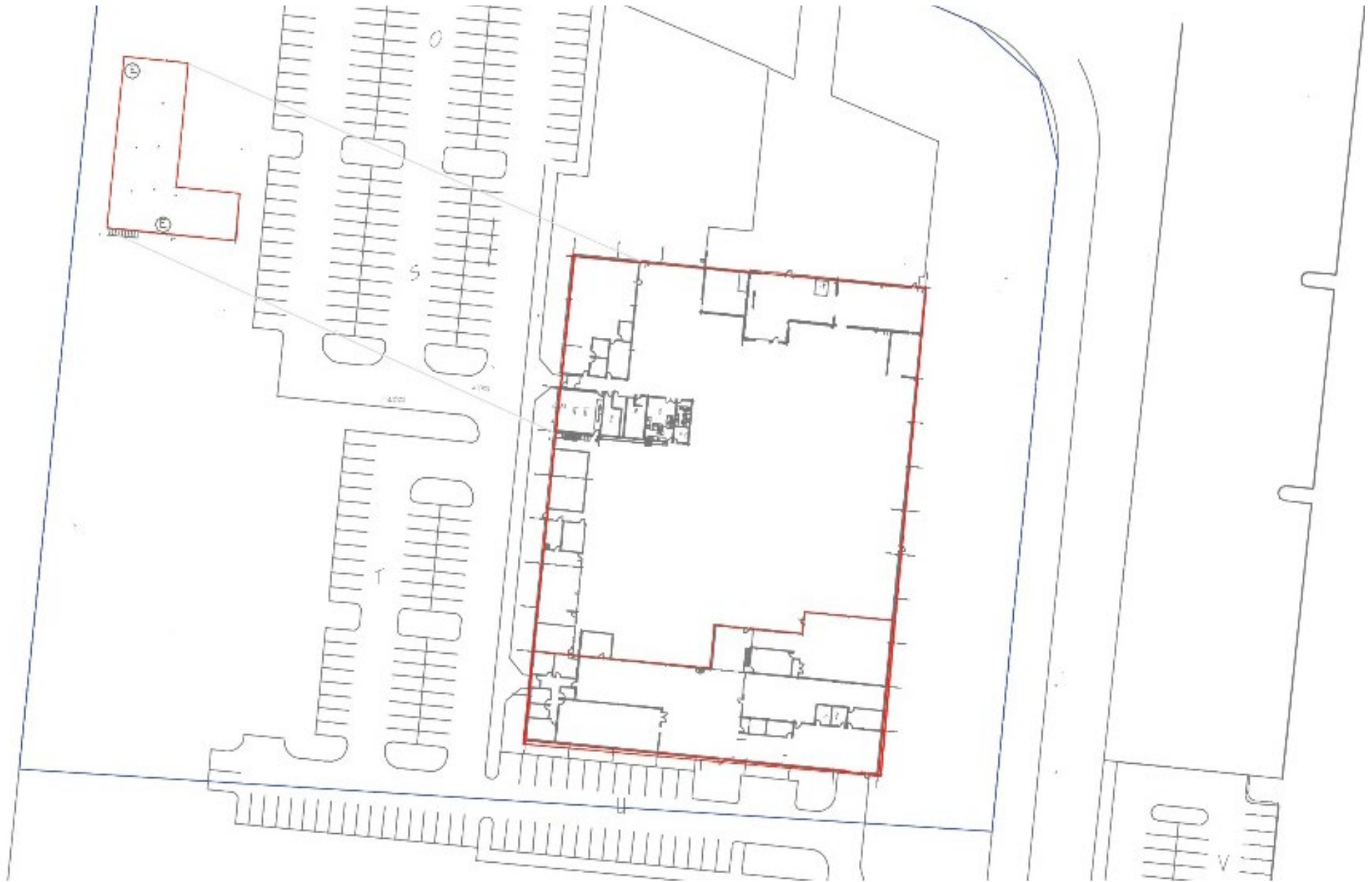
- SR 58 – 0.42 Miles
- I-90 / I-80 – 1.2 Miles
- Route 2 – 2.1 Miles

Property Detail

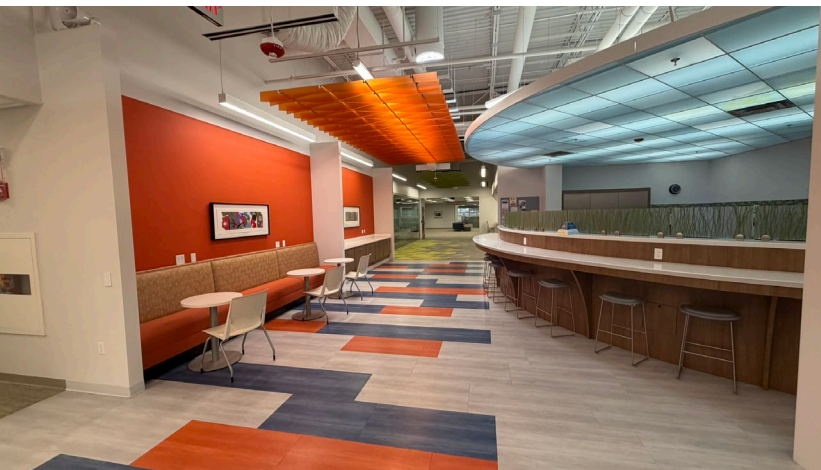
Address:	200 Nordson Dr
City:	Amherst
State:	Ohio
Zip:	44001
County:	Lorain
School District:	Amherst CSD
Parcel #'s:	05-00-036-104-050
Acres:	12.15
Zoning:	I1 - Industrial
Total SF:	69,000
Office SF:	5,400
Warehouse SF:	63,000
Year Built:	1984
Clear Height:	18'
Docks:	1 (+1)
Drive-Ins:	2 (14'x14'; 14'x10')
Column Spacing:	30'x30'
Power:	3000 Amps 3-Phase 480V
Office HVAC:	Yes
Warehouse HVAC:	Yes
Sprinklers:	Wet
Utility Providers	
Electric	Ohio Edison
Gas	Columbia Gas
Water	City of Amherst
Sewer	City of Amherst

Property Floor Plan

200 Nordson Drive | Amherst, OH



Property Description



300 Nordson Drive | Amherst, OH

Located in Amherst, Ohio, 300 Nordson Drive offers 99,600 square feet of industrial space on a 12.15-acre parcel zoned I1 - Industrial. The property includes approximately 79,600 square feet of office space and roughly 20,000 square feet of lab and warehouse area, with clear heights from 14'-17'. Built in 1989 and renovated in 2018, the building features floor-to-ceiling glass offices and a large employee kitchen(s) with multiple dining areas. The facility is equipped with 3-phase, 480V power, full climate control and healthy power distribution. Situated in Lorain County this site is ideal for users seeking a versatile, well-equipped industrial opportunity.

Property Amenities:

- Campus-like setting
- Well-maintained corporate facility
- Significant R&D space with corresponding amenities
- Class 1 / Div. 1 Hazard Storage Room
- Lab space
- 2018 office renovation
- Roof Access
- Convenient access to turnpike
- Large employee kitchen & dining area

Distance to Highways

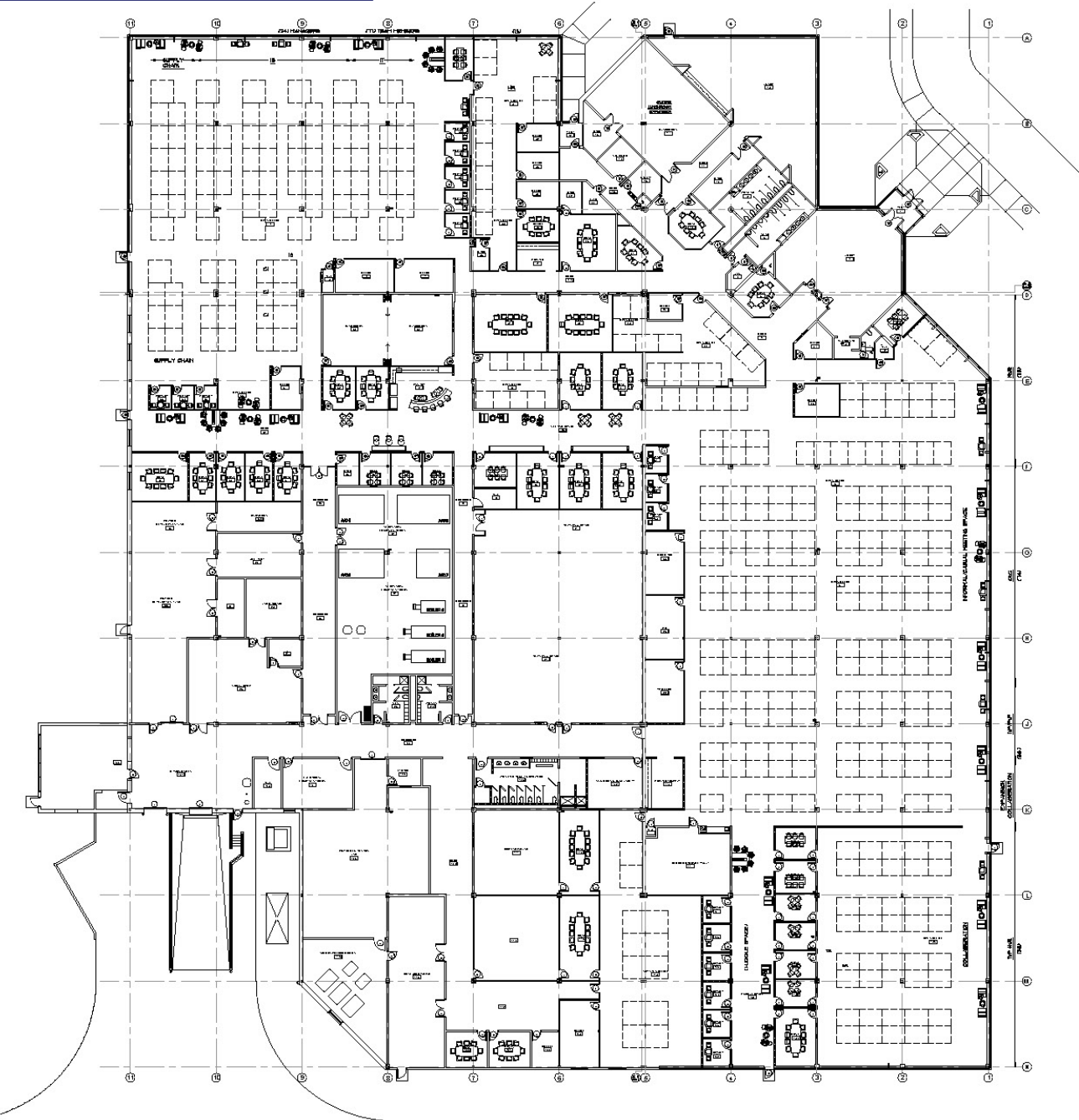
- SR 58 – 0.42 Miles
- I-90 / I-80 – 1.2 Miles
- Route 2 – 2.1 Miles

Property Detail

Address:	300 Nordson Dr
City:	Amherst
State:	Ohio
Zip:	44001
County:	Lorain
School District:	Amherst CSD
Parcel #'s:	05-00-036-104-050
Acres:	12.15
Zoning:	I1 - Industrial
Total SF:	+/- 99600
Office SF:	+/-79,600
Warehouse/Lab SF:	+/-20,000
Year Built:	1989
Underside of Beam:	14'-17'
Docks:	1 (+1)
Drive-Ins:	1 (8'x10')
Column Spacing:	30'x30'
Power:	4000 Amps, 3-Phase 480V
Office HVAC:	Yes
Warehouse/Lab HVAC:	Yes
Sprinklers:	Wet
Lighting	LED
Utility Providers	
Electric	Ohio Edison
Gas	Columbia Gas
Water	City of Amherst
Sewer	City of Amherst

Property Floor Plan

300 Nordson Drive | Amherst, OH



Reference Plan



Property Description



28601 Clemens Road | Westlake, OH

Built in 2010, this ±28,000 SF office facility sits on 11.64 acres in Westlake, Ohio. In 2012, this building was awarded LEED certification at the Silver level by the U.S. Green Building Council.

Property Amenities:

- Campus-like setting
- Well-maintained corporate facility
- Signage available

Distance to Highways

- I-90: 1.2 Miles
- SR 254 (Detroit Rd.): 1.6 Miles
- Route 6 (Lake Rd.): 2.2 Miles

Property Detail

Address: 28601 Clemens Rd

City: Westlake

State: Ohio

Zip: 44145

County: Cuyahoga

Parcel Number: 212-11-031

Acres: 11.64

Zoning: OL

School District: Westlake CSD

Total SF: 28,000

Office SF: 28,000

Year Built: 2010

Utility Providers

Electric The Illuminating Company

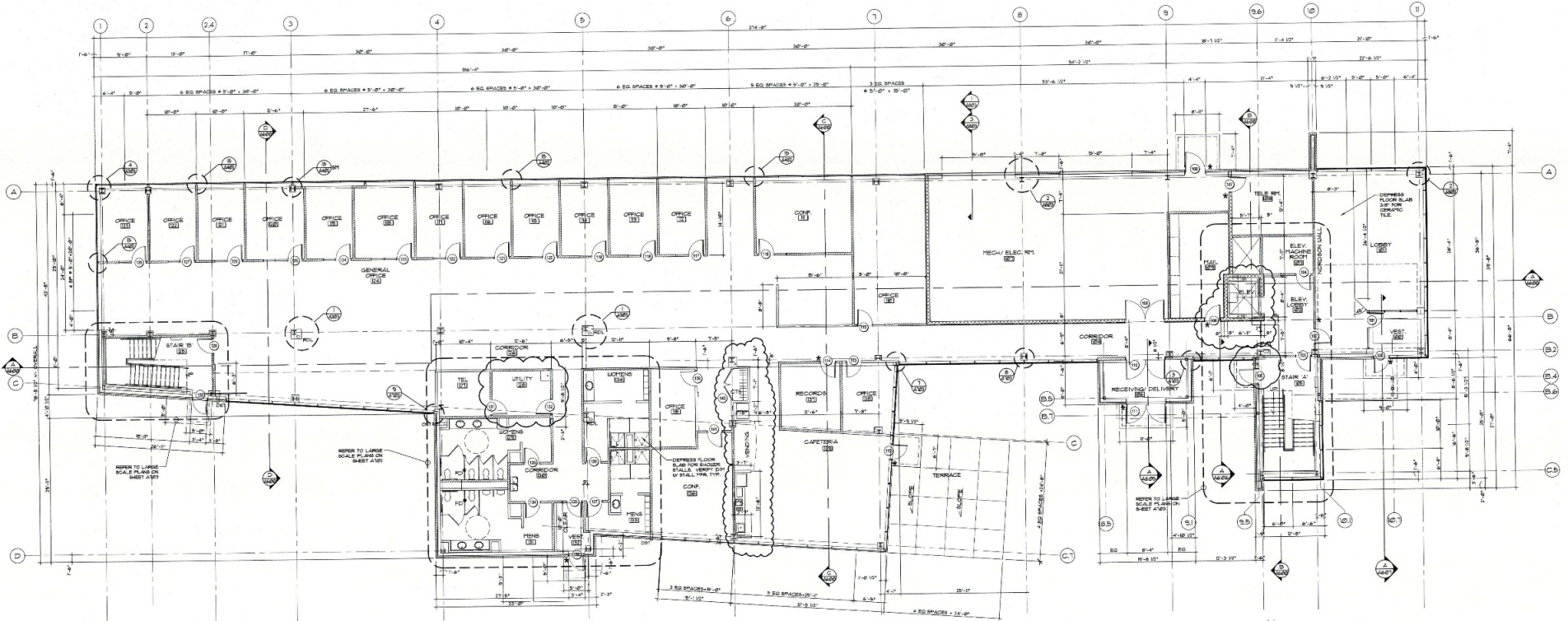
Gas Columbia Gas

Water City of Westlake

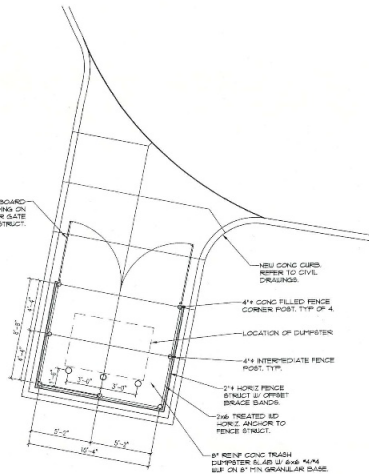
Sewer City of Westlake

Property Floor Plan

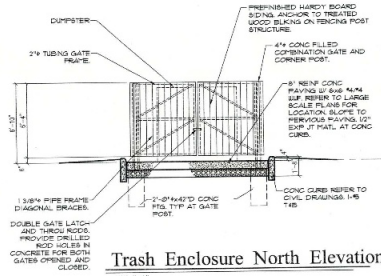
28601 Clemens Road | Westlake, OH | First Floor



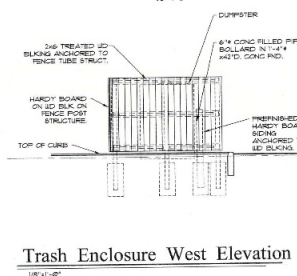
First Floor Dimension Plan



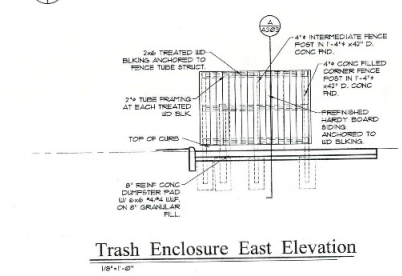
Trash Enclosure Plan



Trash Enclosure North Elevation



Trash Enclosure West Elevation



Trash Enclosure East Elevation

NOTE: ALL PIPE FRAME TUBING 3/4" WALL THICKNESS, ASTM A-36 CLASS 5, HOT DIPPED GALVANIZED. ALL METAL TO BE PAINTED.
PROVIDE ADDITIONAL ED BULKING AS REQUIRED FOR A COMPLETE AND WORKING INSTALLATION. PROVIDE ALL ADDITIONAL GATE HARDWARE AS REQUIRED FOR A COMPLETE AND WORKING INSTALLATION.

<p>Civil Engineer</p>  <p>BRAMHALL ENGINEERING AND SURVEYING CO., INC. 100 MARKET AVENUE, SUITE 200 COLUMBUS, OH 43215 (614) 244-7676 (614) 244-7676 FAX</p>	<p>Mechanical Engineer</p>  <p>Korff KORFF ENGINEERS 100 MARKET AVENUE, SUITE 200 COLUMBUS, OH 43215 (614) 244-7676 (614) 244-7676 FAX</p>	<p>Project Architect</p>  <p>CLARK & POST architects inc. 6111 St. Brandywine LEVELS, OHIO 44130</p>
<p>Structural Engineer</p>  <p>U.S. ENGINEERS LTD. 2001-7000 TOWN CENTER DRIVE, SUITE 100 WESTLAKE, OHIO 44145 (440) 333-3333</p>	<p>Electrical Engineer</p> <p>Geism, Frederick & Company Electrical Engineers & Designers 2001-7000 TOWN CENTER DRIVE, SUITE 100 WESTLAKE, OHIO 44145 (440) 333-3333</p>	<p>LEED Consultant</p>  <p>Doty & Miller ARCHITECTS</p>

FOR CONSTRUCTION USE ONLY

Date: Revisions
 January 4, 2010
 February 19, 2010

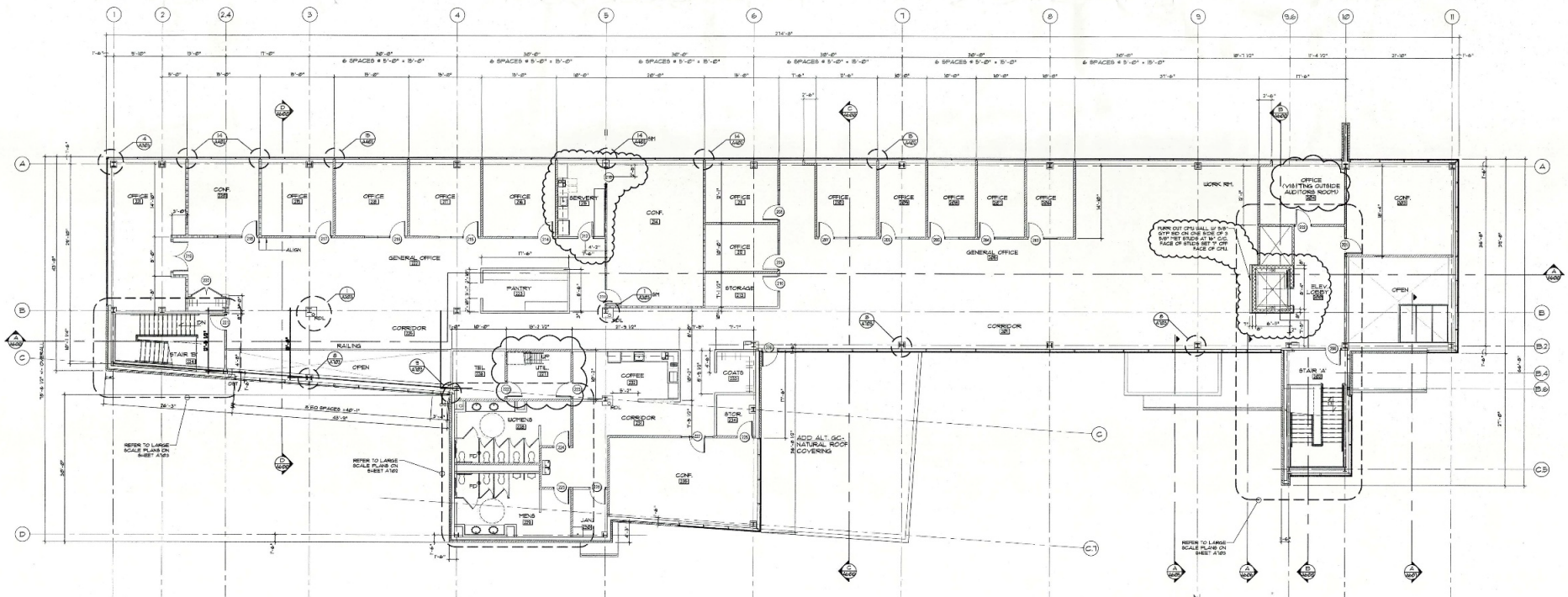
Project Description
 Site Development, Building Shell and Interior Package
 New Headquarters Facility for
Nordson Corporation
 28601 Clemens Road
 Westlake, Ohio 44145
 Project Number: 0907-D
 Sheet Title

Sheet Description
 First Floor Dimension Plan

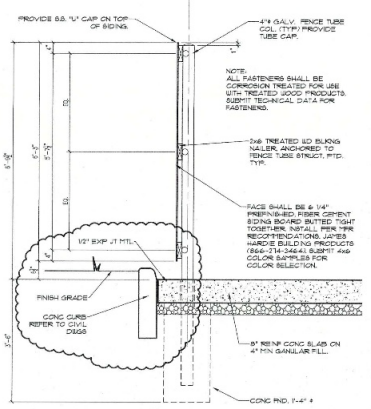
A-301

Property Floor Plan

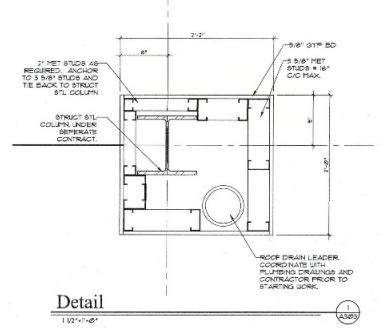
28601 Clemens Road | Westlake, OH | Second Floor



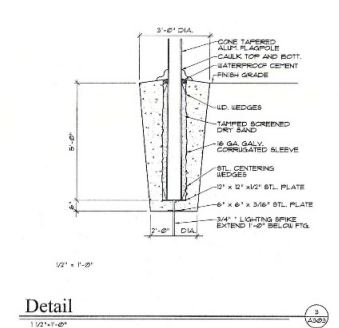
Second Floor Dimension Plan
1/8" = 1'-0"



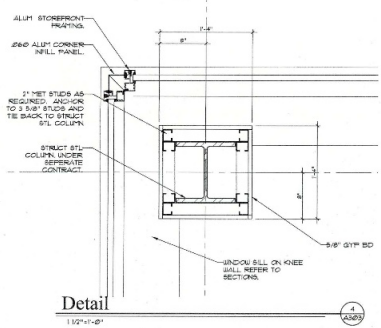
Trash Enclosure Section
3/4" = 1'-0"



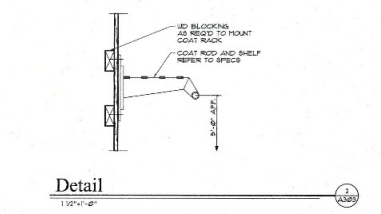
Detail
1/2" = 1'-0"



Detail
1/2" = 1'-0"



Detail
1/2" = 1'-0"



Detail
1/2" = 1'-0"

<p>Civil Engineer</p> <p>BRAMHALL ARCHITECTS AND ENGINEERS, INC. 28601 CLEMENS ROAD WESTLAKE, OH 44145 TEL: 440.351.1000 WWW.BRAMHALL.COM</p>	<p>Mechanical Engineer</p> <p>K KENTON MECHANICAL CORPORATION 28601 CLEMENS ROAD WESTLAKE, OH 44145 TEL: 440.351.1000 WWW.KENTONMECH.COM</p>	<p>Project Architect</p> <p>CLARK & POST architects inc. 8322 So. Broadway Lorain, Ohio 44040</p>
<p>Structural Engineer</p> <p>MLL engineers ltd. 10000 WOODBURN BLVD., SUITE 41 COLUMBUS, OH 43240 TEL: 614.885.8800 WWW.MLL-ENGINEERS.COM</p>	<p>Electrical Engineer</p> <p>Grison, Frederick & Company Electrical Engineers & Designers 3801-C Cedar Bay St. Mentor, OH 44130 TEL: 440.921.0000 WWW.GFC-EE.COM</p>	<p>1.3930 Consultant</p> <p>Doty & Miller ARCHITECTS</p>

FOR CONSTRUCTION USE ONLY

Date Revisions
January 4, 2010
February 19, 2010

Sheet Descriptions
Second Floor
Dimension Plan

Project Name
Site Development, Building Shell and Interior Package
New Headquarters Facility for
Nordson Corporation
28601 Clemens Road
Westlake, Ohio 44145
Project Number: 1907-D
Sheet Title
A-303

Subject Properties

1 100-300 Nordson Dr | Amherst, OH

2 28601 Clemens Rd | Westlake, OH

Distance to Rt 2

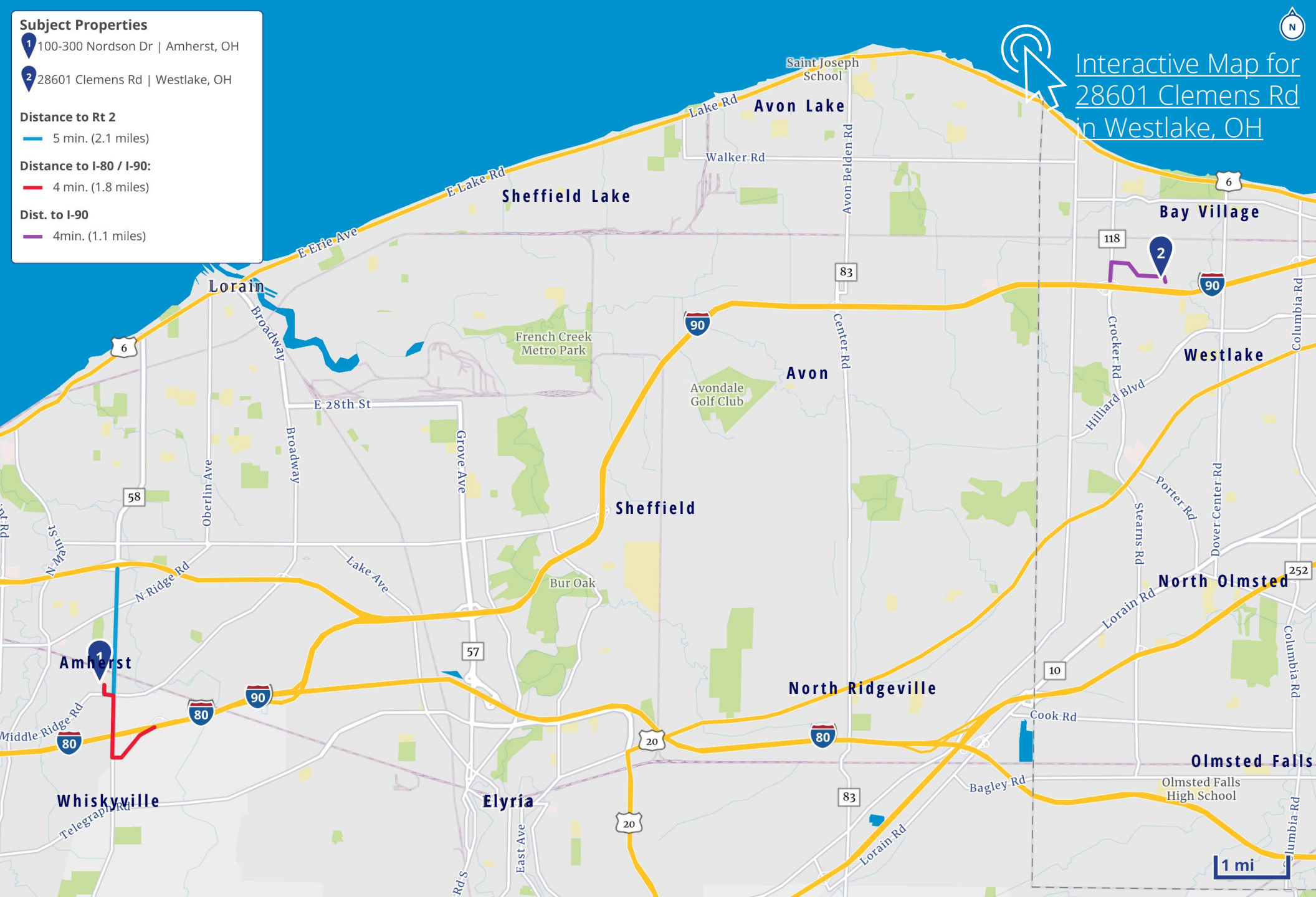
— 5 min. (2.1 miles)

Distance to I-80 / I-90:


— 4 min. (1.8 miles)

Dist. to I-90

— 4min. (1.1 miles)



[Interactive Map for 28601 Clemens Rd in Westlake, OH](#)

 [Interactive Map for 100 - 300 Nordson Dr in Amherst, OH](#)



Tim Breckner, SIOR
 Senior Vice President
 +1 216 314 0687
 tim.breckner@colliers.com

Conor Toomey, SIOR
 Senior Vice President
 +1 440 539 9649
 conor.toomey@colliers.com

Katie Watts
 Senior Vice President
 +1 440 476 5921
 Katie.watts@colliers.com

Colliers
 200 Public Square, Suite 1050
 Cleveland, OH 44114
 +1 216 239 5060
 colliers.com/cleveland



Accelerating success.

This document/email has been prepared by Colliers for advertising and general information only. Colliers makes no guarantees, representations or warranties of any kind, expressed or implied, regarding the information including, but not limited to, warranties of content, accuracy and reliability. Any interested party should undertake their own inquiries as to the accuracy of the information. Colliers excludes unequivocally all inferred or implied terms, conditions and warranties arising out of this document and excludes all liability for loss and damages arising there from. This publication is the copyrighted property of Colliers and /or its licensor(s). © 2026. All rights reserved. This communication is not intended to cause or induce breach of an existing listing agreement.

[Colliers.com/cleveland](https://colliers.com/cleveland)