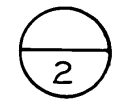




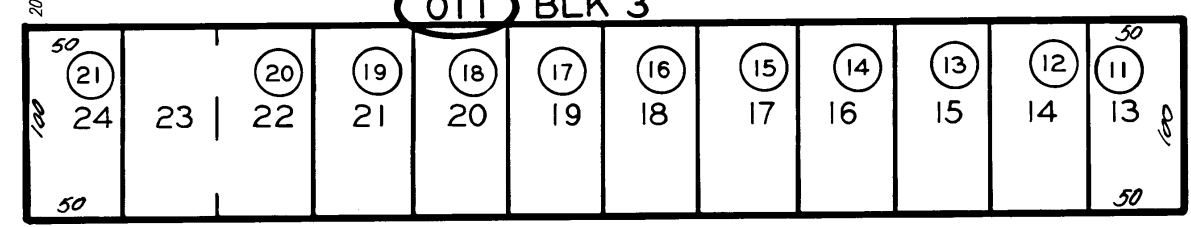
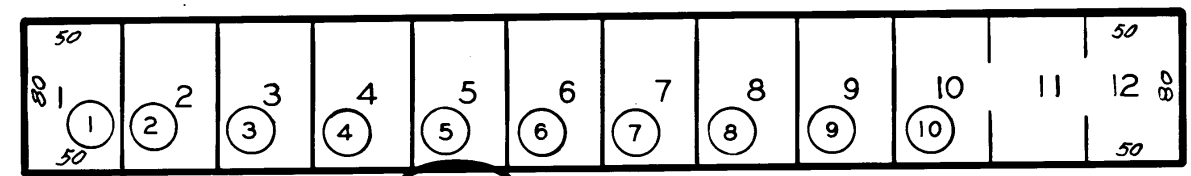
STANLEY ST.



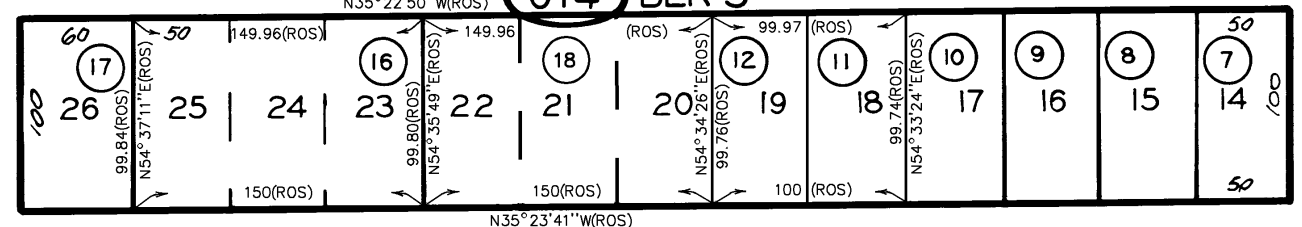
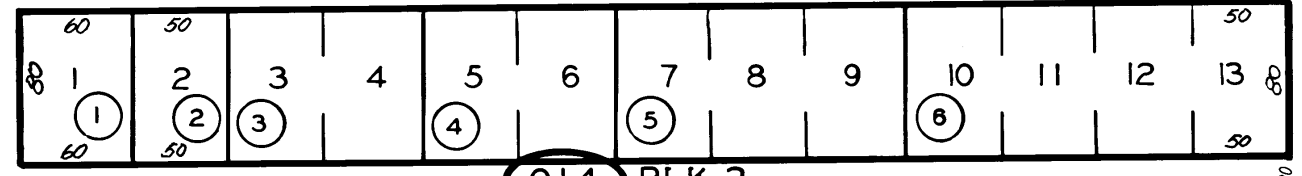
80 S COAST (HILL (HWY 101) ST.) HWY 80

152.01  
09

ST. 70



M 163  
M 917  
ST.



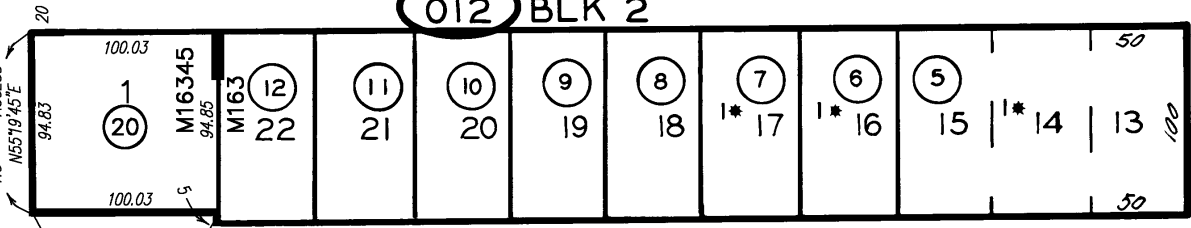
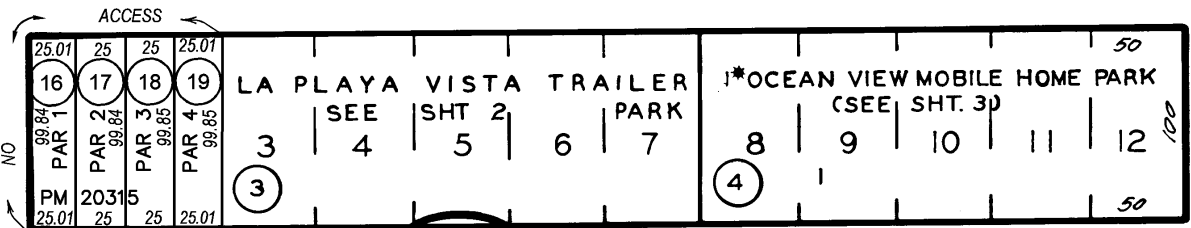
BLVD

TREMONT

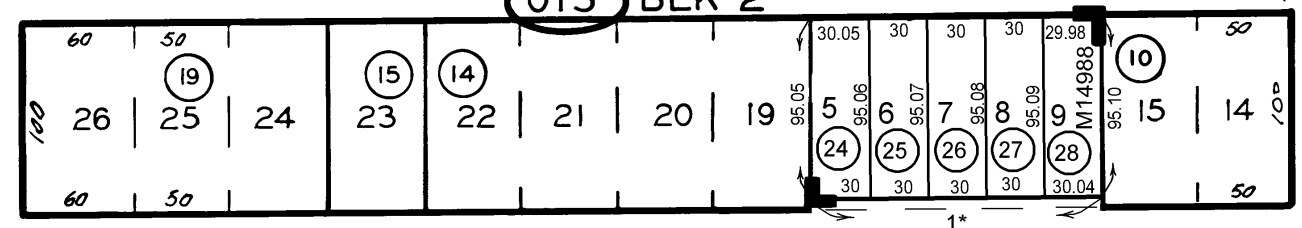
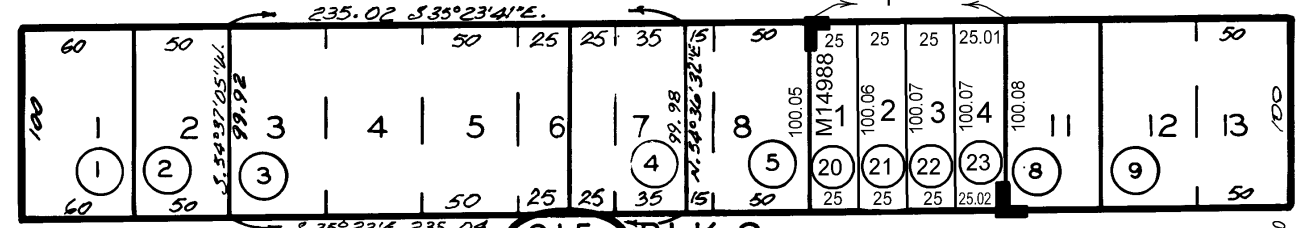
ST

150  
37

WEST



EUCALYPTUS

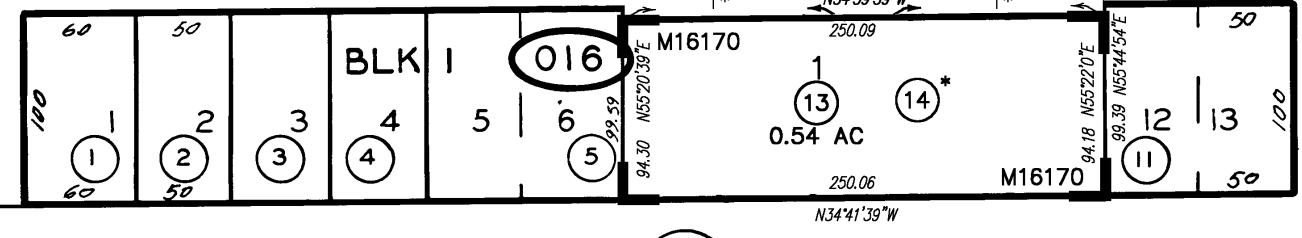
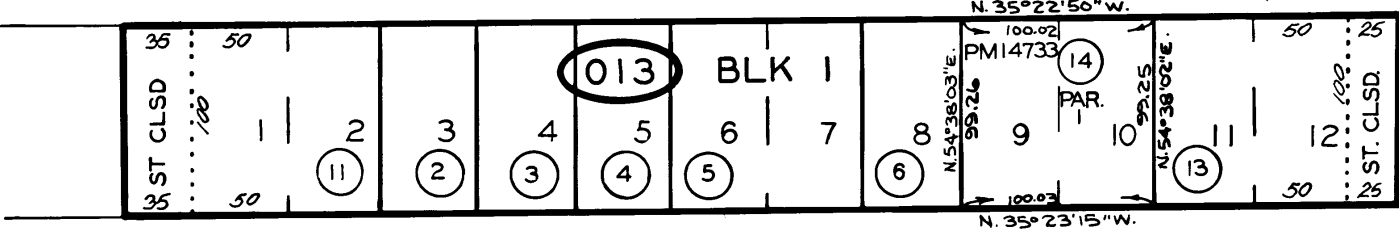


(SHORT ST.)

CLEVELAND (BROADWAY)

ST.

OCEANSIDE



150  
35

THIS MAP WAS PREPARED FOR ASSESSMENT PURPOSES ONLY. NO LIABILITY IS ASSUMED FOR THE ACCURACY OF THE DATA SHOWN. ASSESSOR'S PARCELS MAY NOT COMPLY WITH LOCAL SUBDIVISION OR BUILDING ORDINANCES.

8.8.00

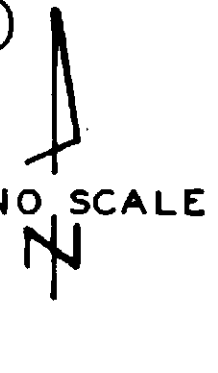
6/11/19 MGC

CHANGES	BLK	OLD	NEW	YR	CUT
013	13	69	5361		
012	15	70	2805		
016	12	76	2657		
015	19	81	3233		
013	14	88	1311		
014	18	01	1702		
015	20-28	06	45		
012	15	16-19	08	146	100
016	13	18	2		
016	13	13 SWS & 14	19	314	00
012	13 & 14	20	20	23	

7

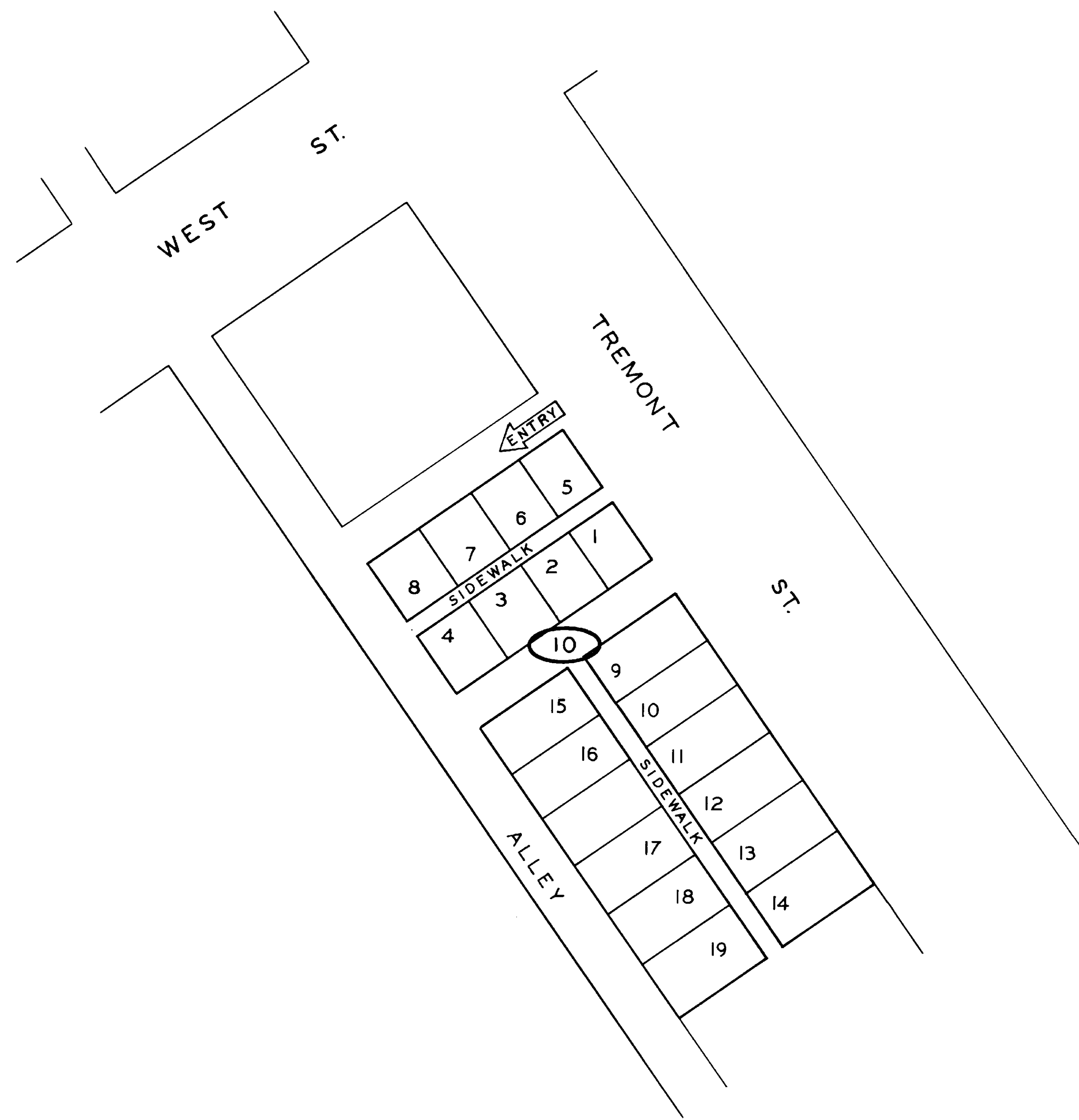
\* COMMON ARE  
1\* NO ACCESS  
2\* CONDO  
1125 S. CLEVELAND  
STREET TOWNHOMES  
DOC17-0468206  
(SEE SHT 3)

MAP 16345-307 WEST  
STREET TOWNHOMES  
MAP 16170-1125 S CLEVELAND  
STREET TOWNHOMES  
MAP 14988-TM T-1-03  
MAP 917 - ENLOE'S ADD  
MAP 163 - JARVIS ADD  
ROS 14026,15021,16910



NO SCALE

8/24/2004 RG Ø

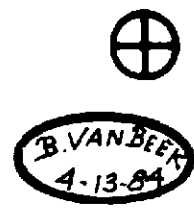


CHANGES				
BLK	OLD	NEW	YR	CUT

SPACE	PARCEL NUMBER
1 TO 19	771-520-10-01 TO 19

THIS MAP WAS PREPARED FOR ASSESSMENT PURPOSES ONLY. NO LIABILITY IS ASSUMED FOR THE ACCURACY OF THE DATA SHOWN. ASSESSOR'S PARCELS MAY NOT COMPLY WITH LOCAL SUBDIVISION OR BUILDING ORDINANCES.

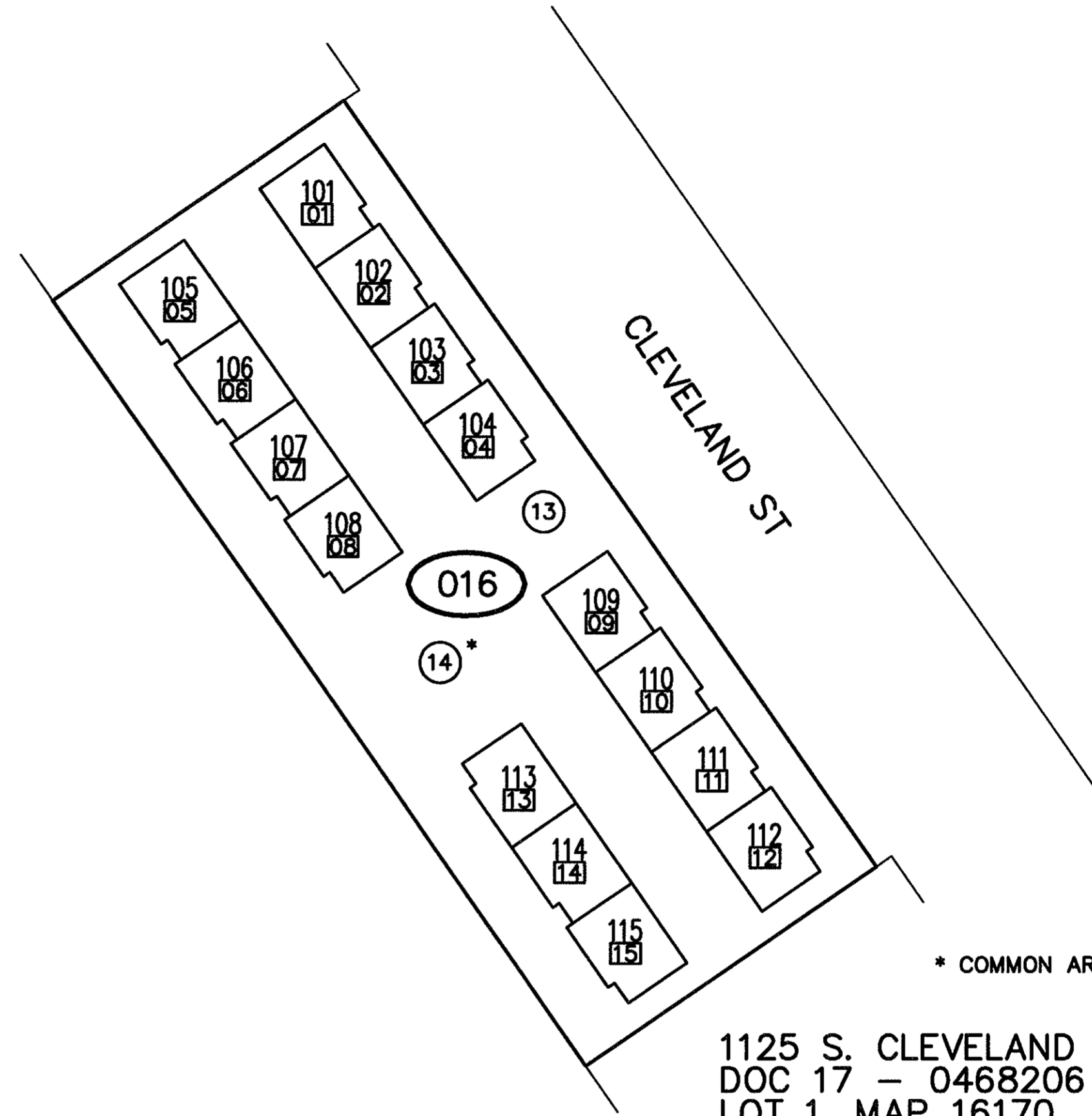
LA PLAYA VISTA TRAILER PARK  
 MAPPED FOR MOBILE HOME ASSESSMENT ONLY



SAN DIEGO COUNTY  
 ASSESSOR'S MAP  
 BOOK 152, PAGE 01, SHT. 2

THIS MAP WAS PREPARED FOR ASSESSMENT PURPOSES ONLY. NO LIABILITY IS ASSUMED FOR THE ACCURACY OF THE DATA SHOWN. ASSESSOR'S PARCELS MAY NOT COMPLY WITH LOCAL SUBDIVISION OR BUILDING ORDINANCES.

07



SAN DIEGO COUNTY ASSESSOR'S MAP



152-01  
SHT 3  
1" = 50'

Drawn: 06/21/18 ARS

\* COMMON AREA

1125 S. CLEVELAND STREET TOWNHOMES  
 DOC 17 - 0468206  
 LOT 1, MAP 16170  
 ASSESSMENT PAR NO  
 152-016-13 SUB ID 01 - 15

CONDOMINIUM