



9800

**MEDICAL
CENTER
DRIVE**

ROCKVILLE, MD

**FOR
SUBLEASE**

LAB & OFFICE

**WITH GMP
MANUFACTURING
SUITES**

13,988 SF
**IMMEDIATELY
AVAILABLE**

301-337-4700

www.scheerpartners.com

 **Scheer Partners**
A Reputation for Results

FEATURES

- + Class A lab location
- + Purpose-built scientific building
- + Existing office & lab
- + Immediate occupancy
- + Backup generator
- + Shared lab services
 - Autoclave and glass-wash



ACCESS



200 free surface spaces are available;
Ratio of 1.60/1,000 SF



9 minute drive to
Washington Grove
Commuter Rail
(Brunswick Line)



40 minute drive to
Ronald Reagan
Washington National
Airport

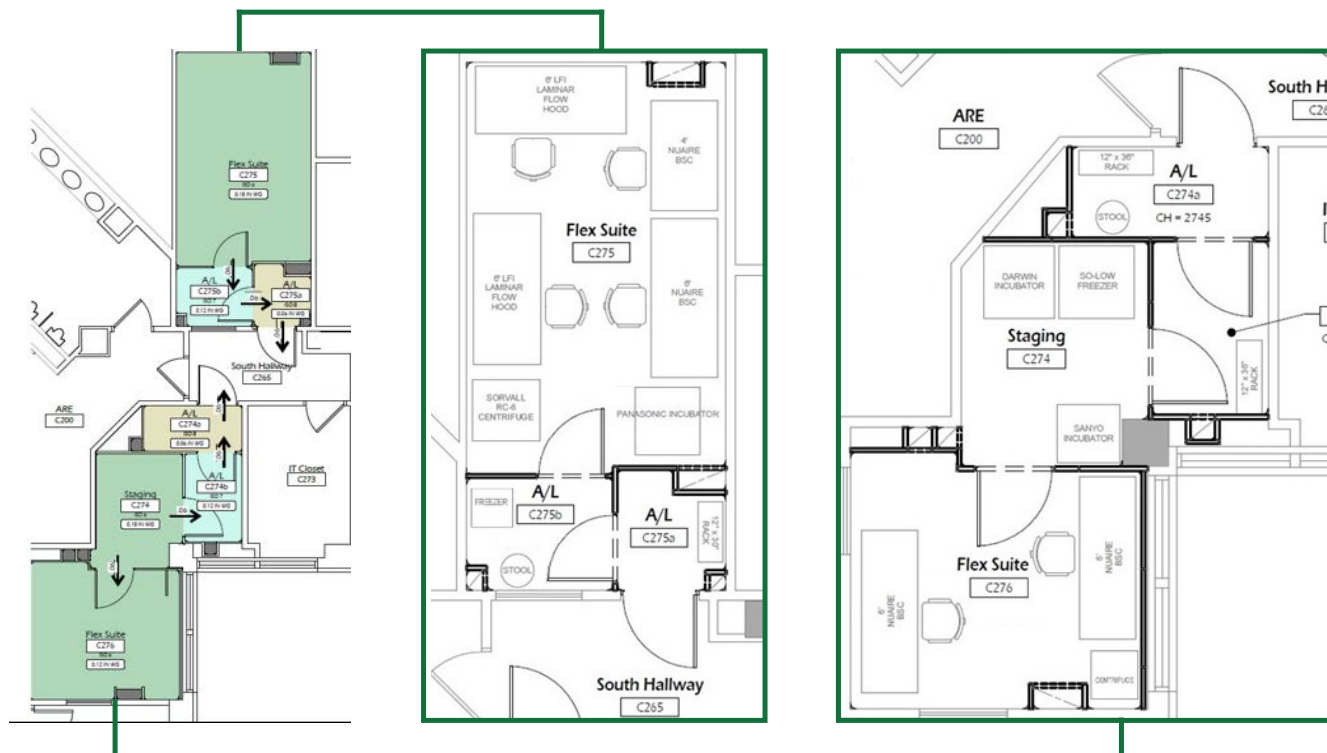


45 minute drive to
Baltimore International
Airport

FLOOR PLANS

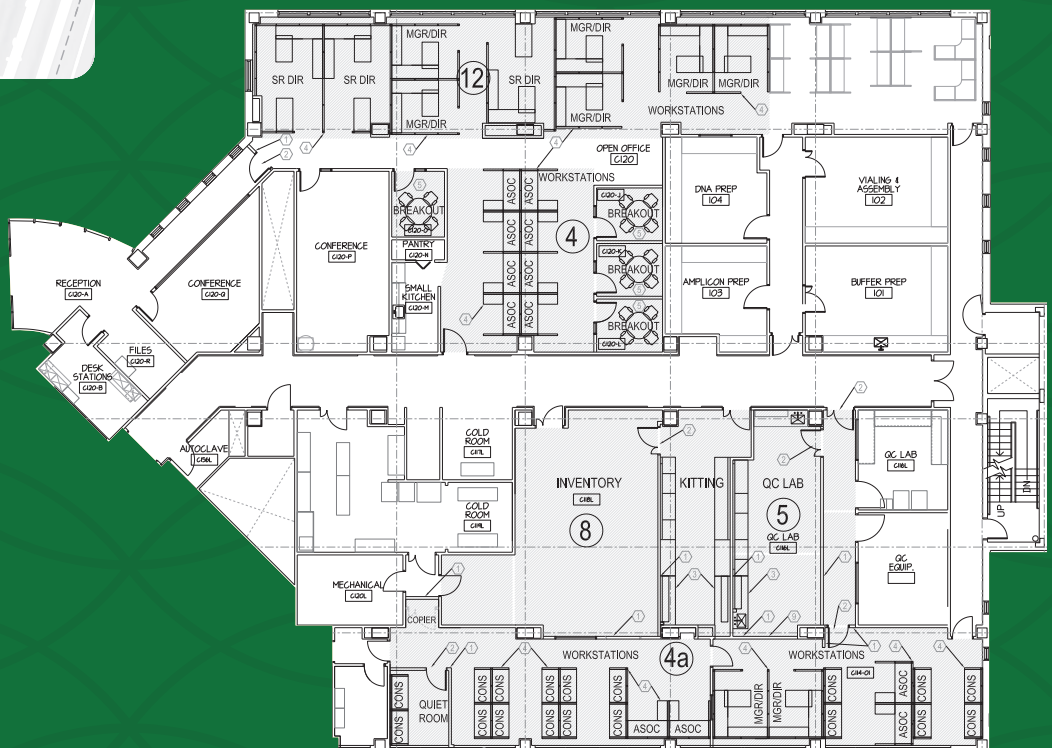
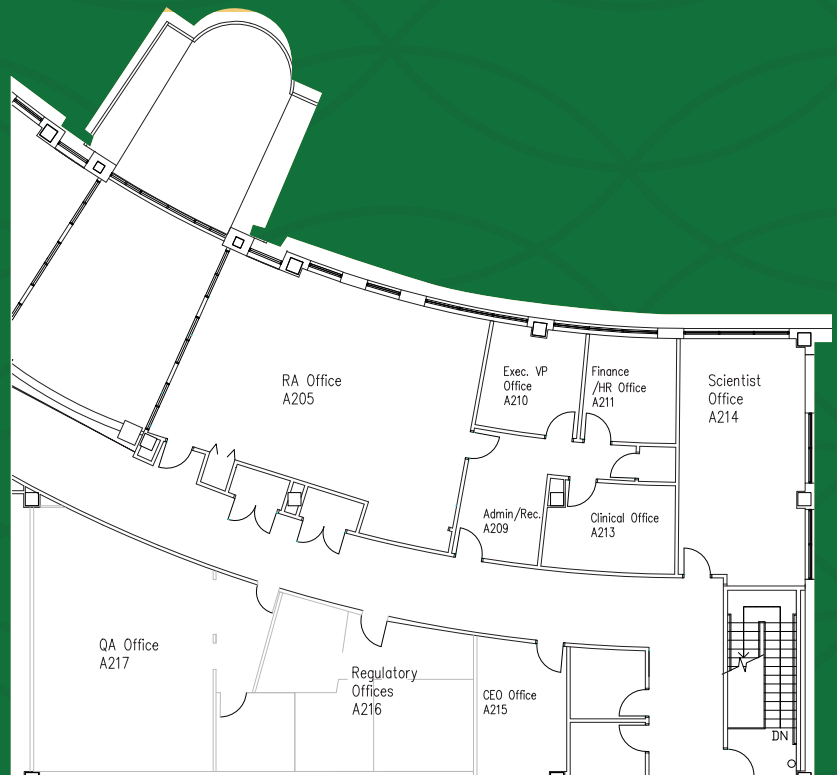
GMP COMPLIANT BIOMANUFACTURING SUITES

Approximately 2,000 rentable SF



A map of the Medical Center campus. Medical Center Dr runs horizontally across the top. Darnestown Rd runs diagonally from the bottom left. Shady Grove Rd runs vertically on the right. Building A is a green L-shaped structure. Building C is a yellow T-shaped structure. Other buildings are shown in light gray.

5,134 SF



8,854 SF

AREA MAP



mbrady@scheerpartners.com

301.337.4700

www.scheerpartners.com



Scheer Partners
A Reputation for Results

15245 Shady Grove Rd, Suite 210 North, Rockville, MD 20850