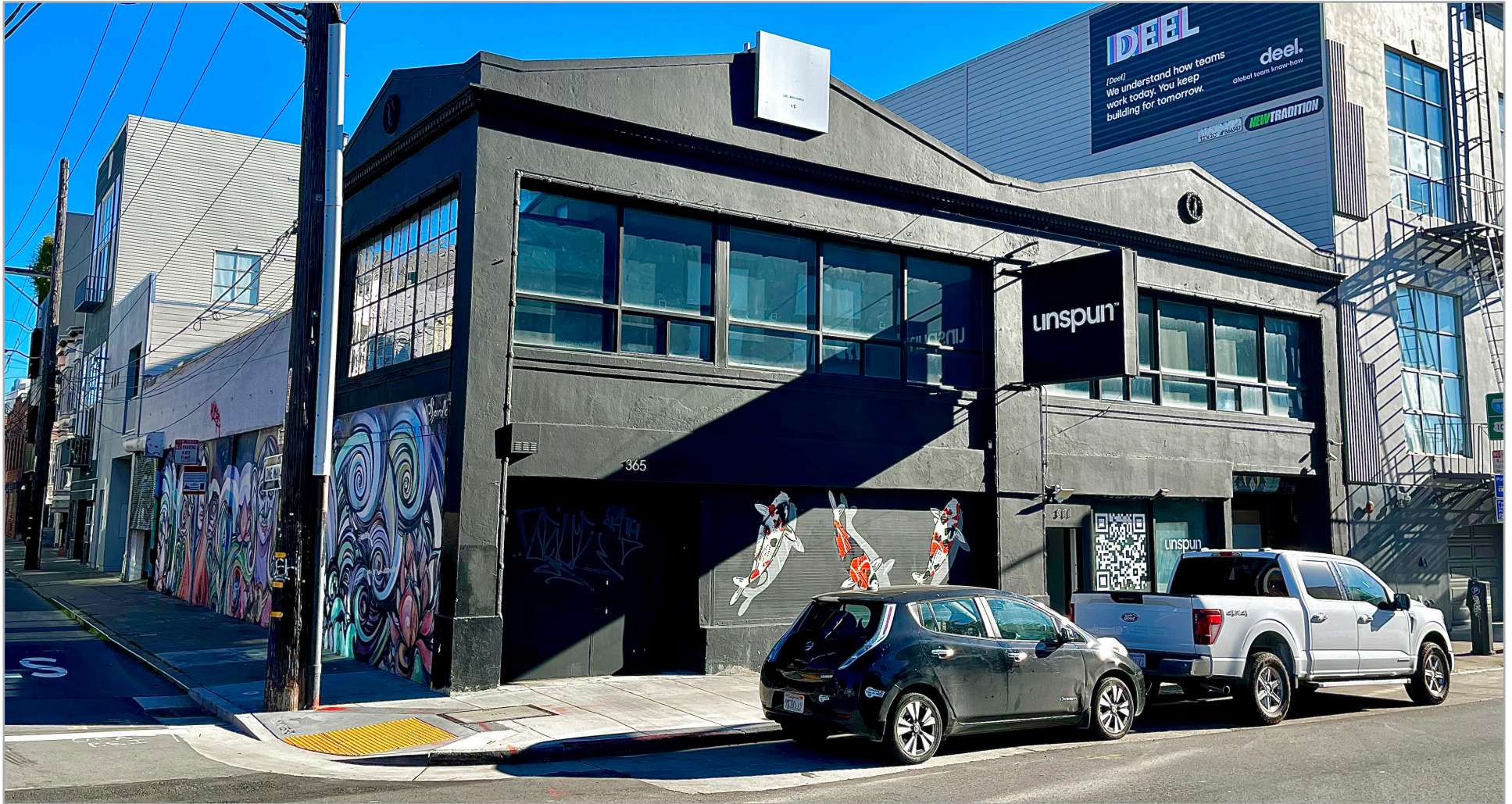


AVAILABLE FOR LEASE

365-371 10TH STREET | SAN FRANCISCO, CA

LEE & ASSOCIATES
COMMERCIAL REAL ESTATE SERVICES



EXCLUSIVE AGENTS:

Dusty Mitchell, Associate

E \\ dmitchell@lee-associates.com

P \\ 510.903.7618 | LIC# 02218306

Zack Barnes, Principal

E \\ zbarnes@lee-associates.com

P \\ 510.903.7619 | LIC# 01971978

Lee & Associates Oakland Commercial Real Estate \ 555 12th Street, Suite 1725, Oakland, CA 94607 \ www.lee-associates.com

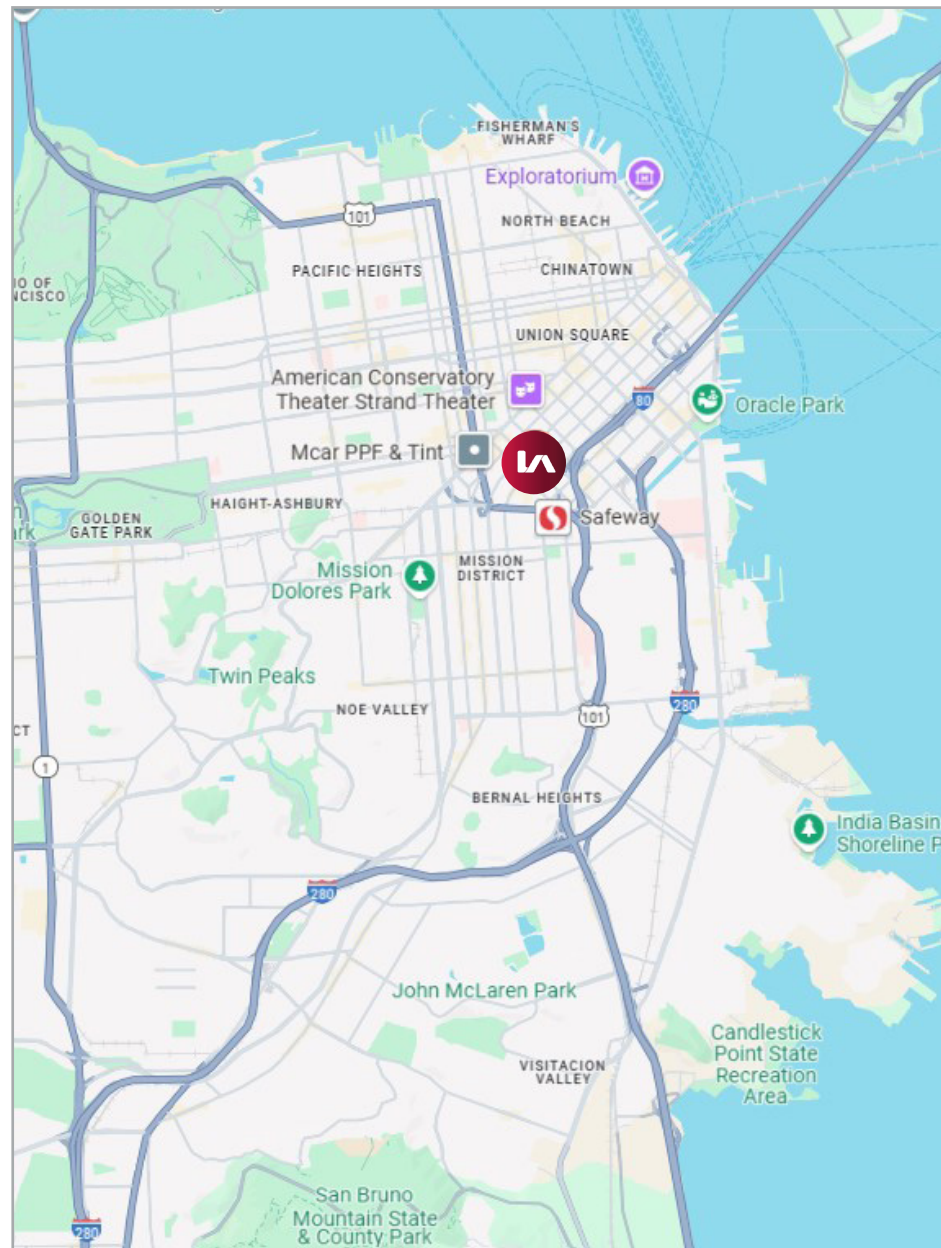
All information furnished regarding property for sale, rental or financing is from sources deemed reliable, but no warranty or representation is made to the accuracy thereof and same is submitted to errors, omissions, change of price, rental or other conditions prior to sale, lease or financing or withdrawal without notice. No liability of any kind is to be imposed on the broker herein.

AVAILABLE FOR LEASE

365-371 10TH STREET | SAN FRANCISCO, CA

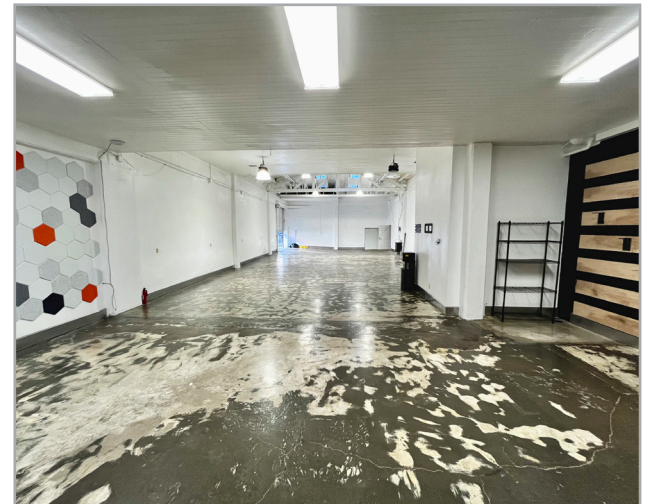
FEATURES:

- Two (2) 2,400± SF Units Totaling 4,800± SF
(Dividing Wall Can Be Demoed)
- Potential to Expand into the 1,200± SF 2nd Floor Office
- One (1) Grade Level Roll-Up Door
- 15' Clear Height
- Two (2) Private Bathrooms
- Skylights
- Polished Concrete Flooring
- Zoning: RCD – Regional Commercial
- Lease Rate: \$2.25/SF, NNN
- Available Now



AVAILABLE FOR LEASE

365-371 10TH STREET | SAN FRANCISCO, CA



Lee & Associates Oakland Commercial Real Estate \ 555 12th Street, Suite 1725, Oakland, CA 94607 \ www.lee-associates.com

All information furnished regarding property for sale, rental or financing is from sources deemed reliable, but no warranty or representation is made to the accuracy thereof and same is submitted to errors, omissions, change of price, rental or other conditions prior to sale, lease or financing or withdrawal without notice. No liability of any kind is to be imposed on the broker herein.