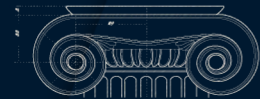


# For Lease

1355 W Chicago Ave Chicago, IL 60642



**1,200 SF of Retail, Office, or Medical Space  
Available**



THE LORD COMPANIES L.L.C.



+ Hard Corner Exposure  
+ Ample Signage Opportunities

+ Surrounded by Rubens Barber Shop, Wing Chun Kung Fu, Noble Thai, Lush Food & Drink, White Dental Studio, Five Star Bar, Provare & More!

+ Zoning: B1-2

+ 22,000 VPD on Chicago Ave

+ Directly Adjacent to Eckhart Park  
+ 0.5 miles from I-90, and I-94.

+ Located along the 66-bus line and a five-minute walk to the Chicago Blue Line Stop.

+ Pricing: Please Inquire

+ Available for Immediate Occupancy

# Floor Plan

+ 1,200 SF

+ 1,200 SF

+ Fully Built Out Office Space

+ 12ft Ceilings

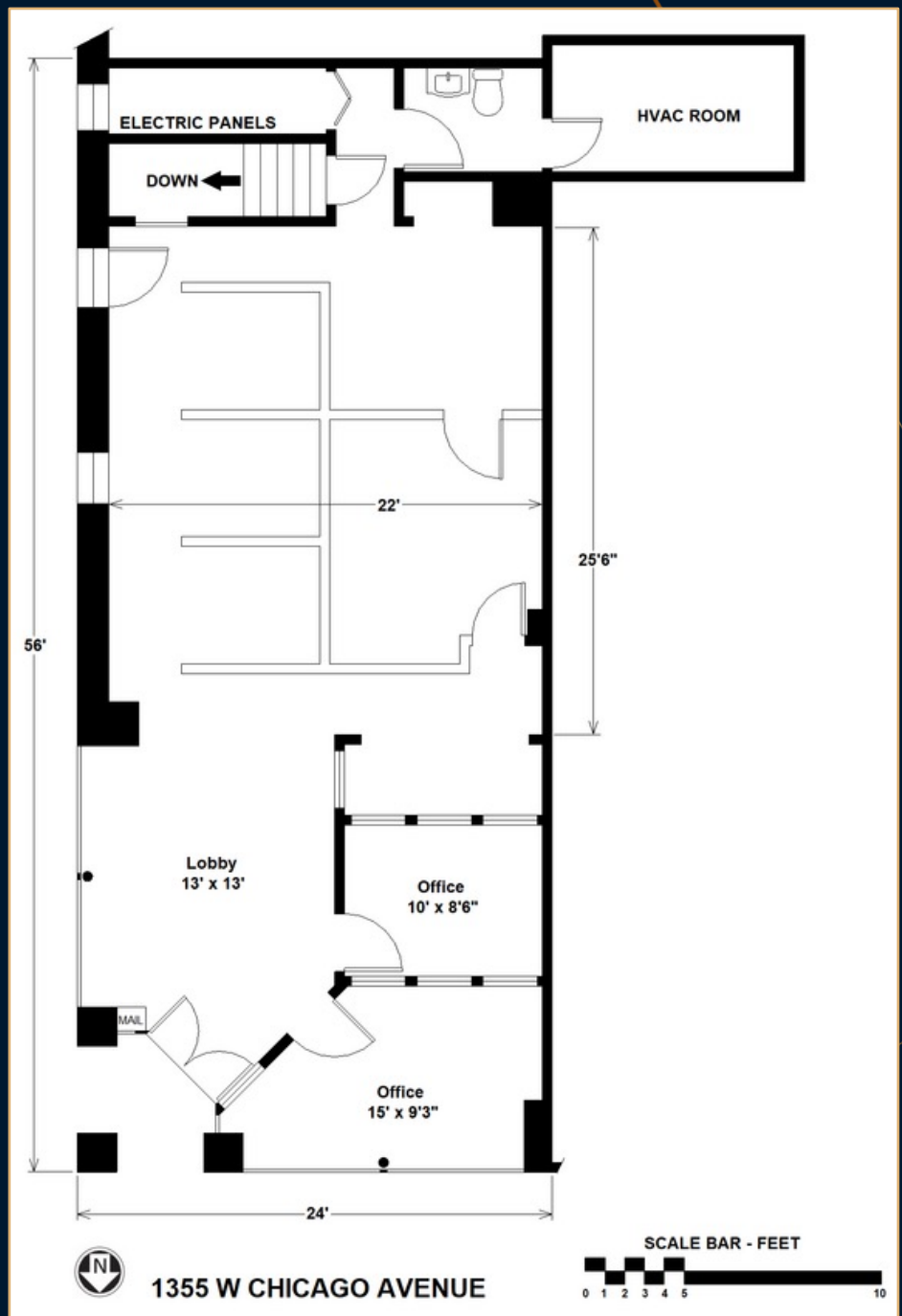
+1 Bathroom

+ 2 Private Offices

+ Tenant Controlled HVAC

+ 400 AMP Electric Panels

+ Open Concept Floorplan





# Interior





# Interior



# West Town



Demographics	1 mile	2 mile	3 mile
Population	49,783	276,773	547,719
Households	23,709	143,637	272,570
Median HH Income	\$130,344	\$117,398	\$109,214
Daytime Businesses	3,624	35,948	56,047
Daytime Employees	41,134	517,751	738,423

# 1355 W Chicago Ave

**For More Information, Please Contact:**

**Keith Lord**

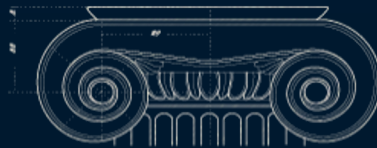
P: 312-287-6066

E: [keith@lordcompanies.com](mailto:keith@lordcompanies.com)

**Michael Flinchbaugh**

P: 216-287-3547

E: [mflinchbaugh@lordcompanies.com](mailto:mflinchbaugh@lordcompanies.com)



THE LORD COMPANIES L.L.C.

\*Broker is using information provided by the property owner and does not certify as to its accuracy. This information is subject to possible errors, omissions, changes of price, and withdrawal without notice.