



OFFICE SPACE AVAILABLE IN CLASS A BUILDING

40 CUTTERMILL ROAD GREAT NECK, NEW YORK



ROZITA SOOMEKH

LICENSED REAL ESTATE BROKER

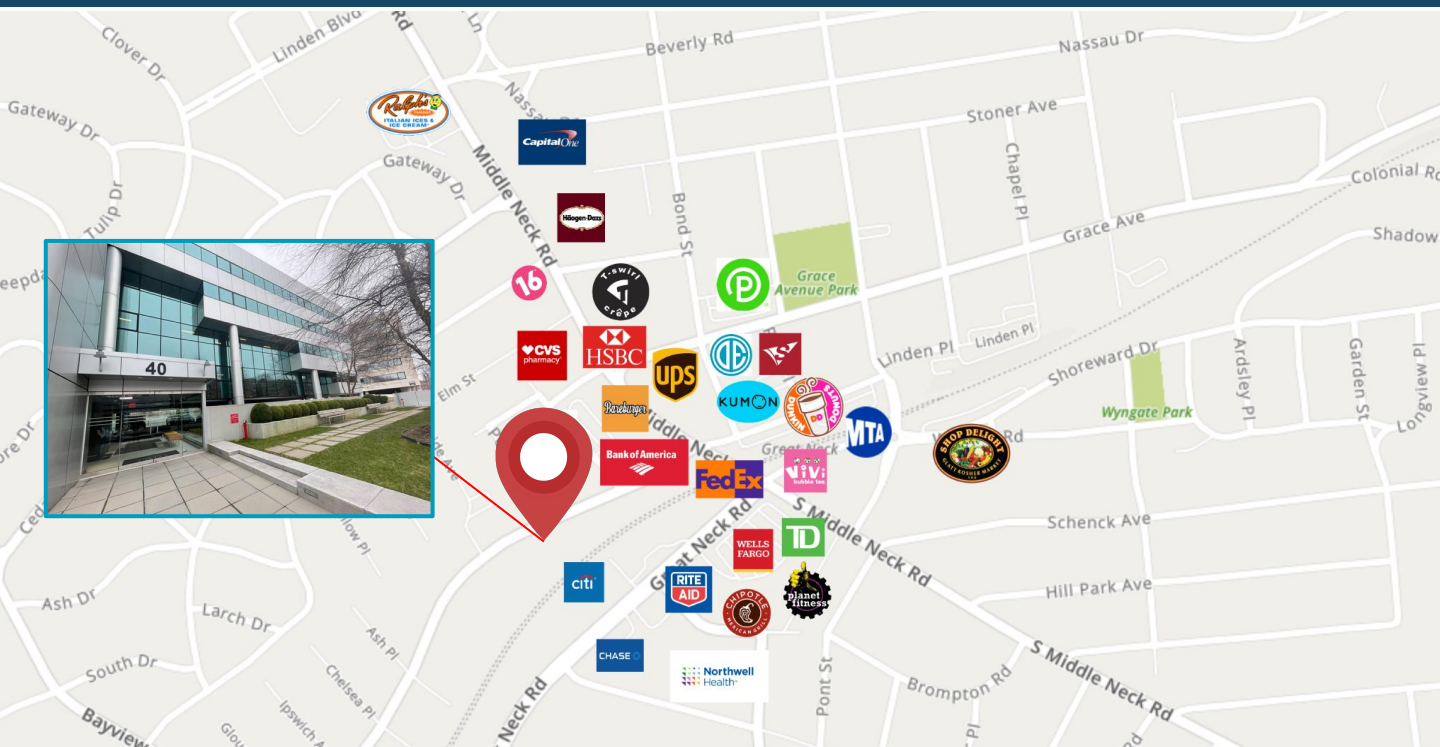
516.205.2279



Exceptional Multi A+ Class Office Building

- **Brand New Parking Lot and Courtyard**
- **State-of-the-Art Renovated Lobby and Modern Elevators**
- **Dedicated On-Site Management Team**
- **24-Hour Security Surveillance Ensuring Safety**
- **Exclusive Opportunity: Only One Office Space Available**

Do not miss this unparalleled opportunity to secure a position in one of the most prestigious buildings in the area. This space offers an elite professional environment, perfect for businesses seeking top-tier amenities and a prime location.



OTHER NOTABLE BUSINESSES IN THE AREA



**STRATEGICALLY LOCATED NEAR THE LIRR
STATION, APPROX. 20 MIN. RIDE TO
MANHATTAN, AND CLOSE TO ALL EATERIES,
CAFES, BANKS, AND PUBLIC TRANSPORT. ALL
TENANTS HAVE 24/7 ACCESS TO THE BUILDING.
A BUILDING TRULY UNMATCHED IN QUALITY
AND EMINENCE, CONTACT TODAY.
IT WILL BE AVAILABLE FROM 3/1/2026**

DouglasElliman

**THE ROZITA
SOOMEKH
TEAM**
at Douglas Elliman
Real Estate

ROZITA SOOMEKH

Licensed Real Estate Broker

Rozita.Soomekh@elliman.com

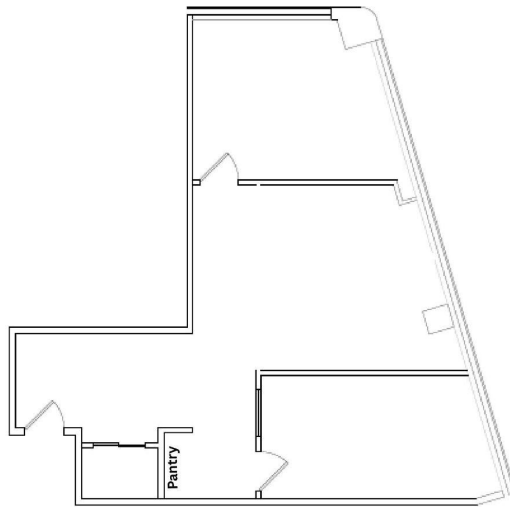
516.205.2279



SUITE 306
\$ 4,598.75/M +\$3.75 Utilities
1,415 RSF

40 Cutter Mill Road | Great Neck, NY

Suite # 306 Floor Plan



All areas, conditions and dimensions are approximate. This plan is intended for identification purposes only and is not to be deemed a representation by Landlord as to accuracy of square footage.



ROZITA SOOMEKH

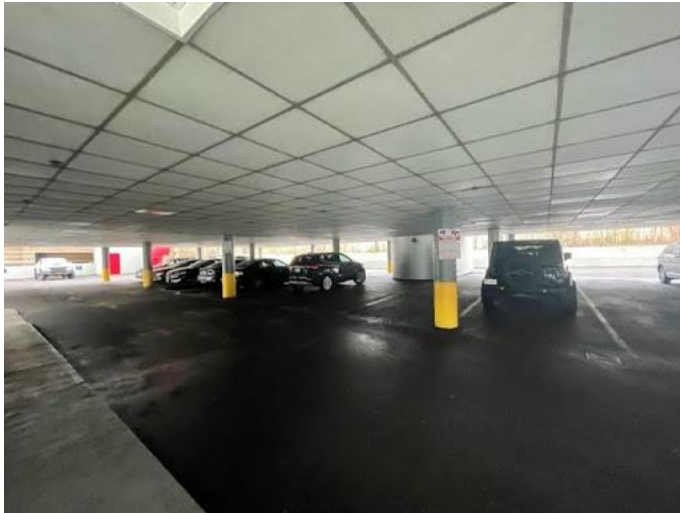
Licensed Real Estate Broker

Rozita.Soomekh@elliman.com

516.205.2279







ROZITA SOOMEKH

Licensed Real Estate Broker

Rozita.Soomekh@elliman.com

516.205.2279



GREAT NECK

NEW YORK



Great Neck is a region on Long Island, New York, that covers a peninsula on the North Shore and includes 9 villages, such as the villages of Great Neck, Great Neck Estates, Great Neck Plaza, Kings Point, and Russell Gardens, and a number of unincorporated areas, as well as an area south of the peninsula near Lake Success and the border territory of Queens.

TOTAL POPULATION

±10,000



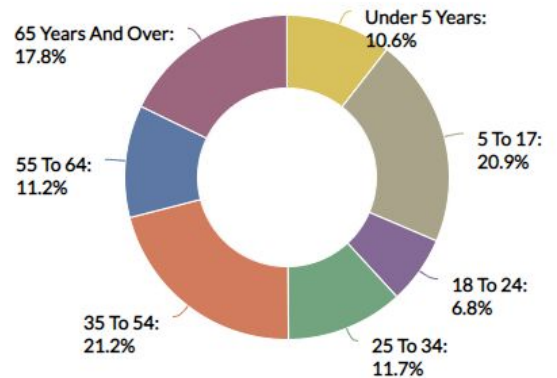
THE ROZITA SOOMEKH TEAM
at Douglas Elliman
Real Estate



CONTACT US



Age Demographic



MEDIAN HOUSEHOLD INCOME

