

High Visibility, Competitive Pricing and Centrally Located!

Del Rio Center

22909 Soledad Canyon Road
Santa Clarita, California 91350

Lease Highlights:

- Ideal for Retail, Professional Office Space, Medical and Service-Oriented Businesses.
- Attractive Lease Rates- One of the lowest in Valencia!
- Co-Tenants Include: Wing Stop, Chi-Chi's Pizza, Bodhi Coffee Traders, Schooners, Runners Lane, Edible Arrangements, 76 Gas-Station, California Bakery and Cafe, Massage, Nail Salon and Much More!
- Highly Visible-Street Frontage.
- Santa Clarita's Second Busiest Intersection, with counts in excess of 100,000 CPD.
- Central location in the heart of Valencia and within minutes to the Golden State 1-5 and Antelope Valley SR-14 Fwys.



For More Information:

John Z. Cserkuti

O: 661.705.3551

jcserkuti@naicapital.com | Cal DRE Lic. #01267987

Tom Oliver

O: 661.705.3565

toliver@naicapital.com | Cal DRE Lic. #01466098

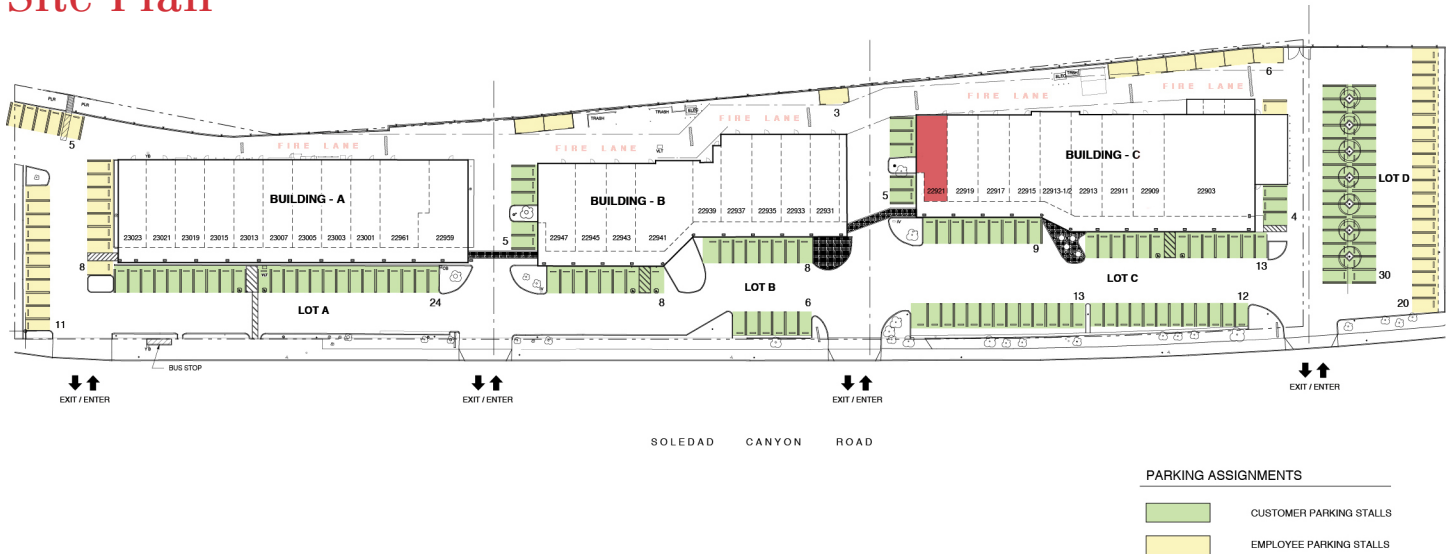
Available Spaces

Spaces	Size (SF)
22921 Soledad Canyon Road	1,465

No warranty, express or implied, is made as to the accuracy of the information contained herein. This information is submitted subject to errors, omissions, change of price, rental or other conditions, withdrawal without notice, and is subject to any special listing conditions imposed by our principals. Cooperating brokers, buyers, tenants and other parties who receive this document should not rely on it, but should use it as a starting point of analysis, and should independently confirm the accuracy of the information contained herein through a due diligence review of the books, records, files and documents that constitute reliable sources of the information described herein. Logos are for identification purposes only and may be trademarks of their respective companies. NAI Capital, Inc. Cal DRE Lic. #02130474.

For Lease: Del Rio Center

Site Plan



SUITE	TENANT	SQ. FT.
22903	Schooner's Patio Grill	4,518
22909	SCV Florist	1,428
22911	Let's Thai	1,400
22913	Achita Shushi	1,363
22913	Bodhi Coffee Traders	1,354
22915	California Poke & Boba	1,210
22917	Dragon Acupuncture	1,200
22919	Golden Hands	1,206
22921	AVAILABLE (30 Days Notice)	1,465
22931	Wing Stop	1,465
22933	Impressions in Thread	1,313
22935	MOK Wheel	1,205
22937	Just Passing Thru	1,243
22939	Mane Cave Barbershop	800
22941	Tackle Express	1,454

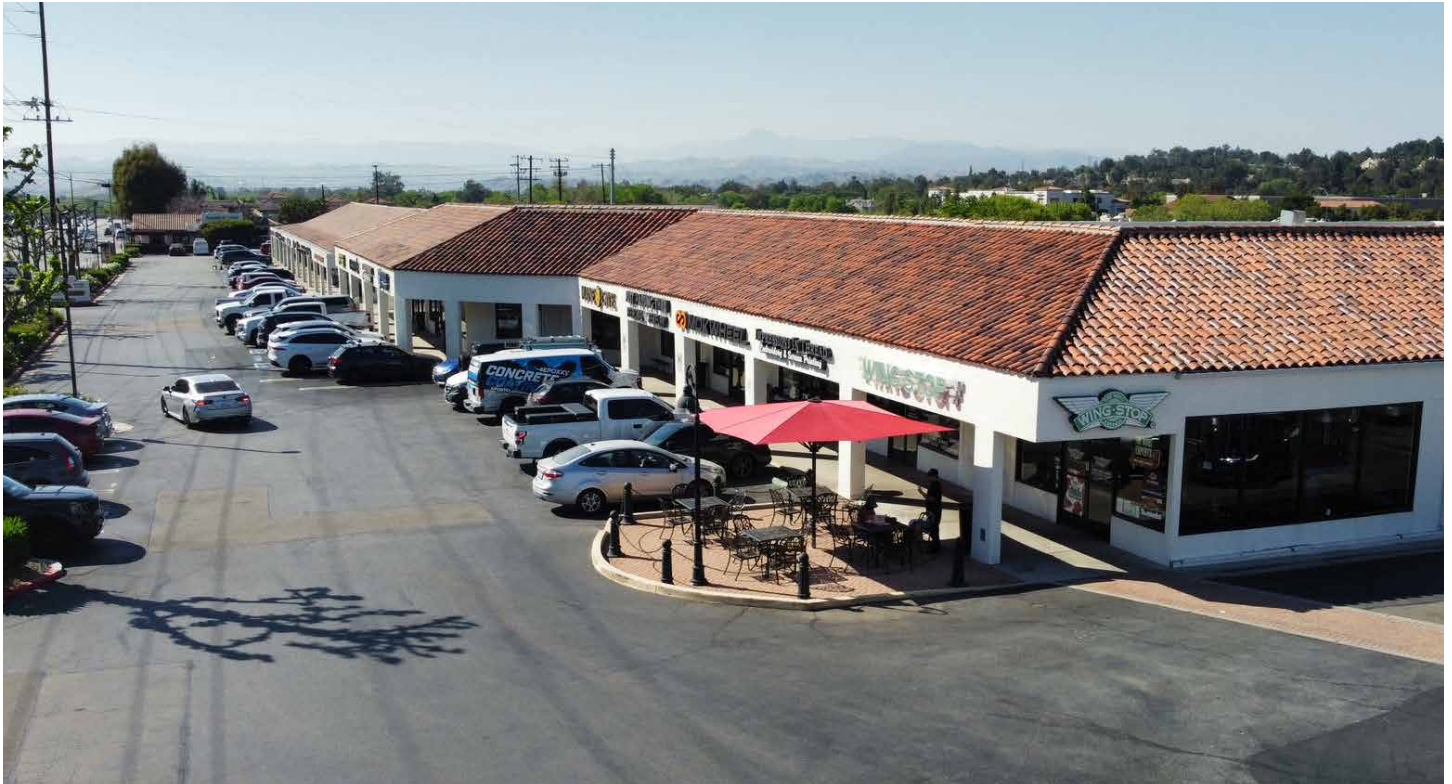
SUITE	TENANT	SQ. FT.
22943	Reliable Insurance Registration	1,009
22945	Club Golf	1,404
22947	Ames	1,498
22959	Runner's Lane	1,388
22961	Hands Plus Physical Therapy	2,209
23001	Dave Walter Flooring Kitchens & Bath	1,200
23003	Casa Amazona	932
23005	White Crown Dental	1,200
23007	Tags	1,810
23013	U-Wash Doggie	1,200
23015	Happy Brow	1,210
23019	Top Spa Nails	900
23021	California Bakery & Cafe	1,200
23023	Edible Arrangements	1,224

John Z. Cserkuti
661.705.3551
jcserkuti@naicapital.com
Cal DRE Lic. #01267987

Tom Oliver
661.705.3565
toliver@naicapital.com
Cal DRE Lic. #01466098

NAI Capital
COMMERCIAL REAL ESTATE SERVICES, WORLDWIDE

For Lease:
Del Rio Center



John Z. Cserkuti
661.705.3551
jcserkuti@naicapital.com
Cal DRE Lic. #01267987

Tom Oliver
661.705.3565
toliver@naicapital.com
Cal DRE Lic. #01466098

NAICapital
COMMERCIAL REAL ESTATE SERVICES, WORLDWIDE