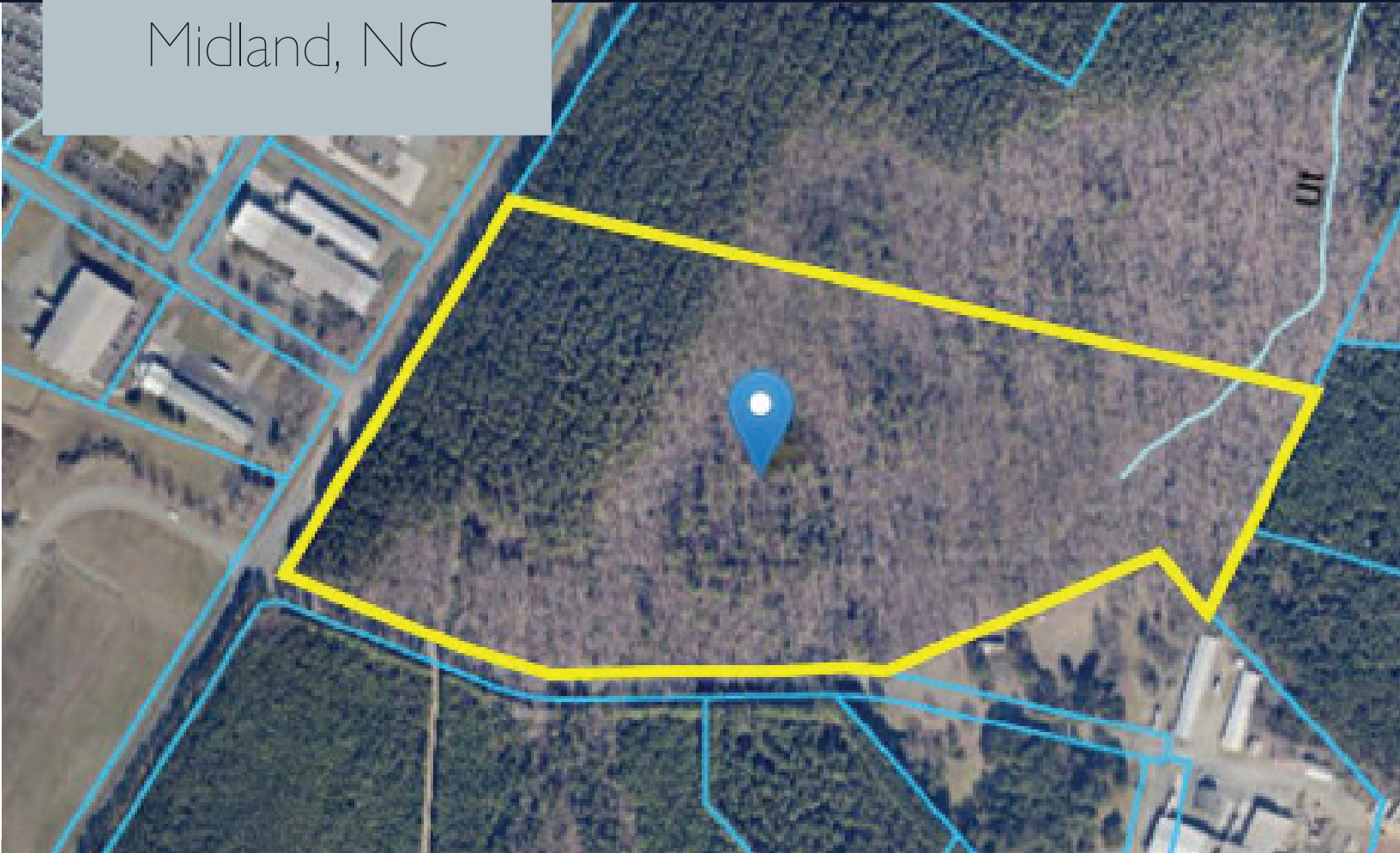


# FOR SALE

LAND  
Midland, NC

**NORTHSTATE**  
PROPERTY ADVISORS



US HWY 601 S.

Midland, NC 28107

Raw Industrial land for sale at the intersection of Whitley Rd and US HWY 601 in Midland, NC. Standing timber has been sold and will be cut before August 2025. Property is in Cabarrus County. Fairly broad range of industrial uses allowed per the use table. Access to sewer line via neighbors property. Use tables mentions outdoor storage as a permitted use..Please verify with Cabarrus County.

- +/- 40 Acres
- \$1,950,000
- GI Zoning (General Industrial)
- Corner Lot
- Directly Across from Corning



704.782.7777  
nparealestate.com

HWY 601 S.  
Midland NC 28107

**NORTHSTATE**  
PROPERTY ADVISORS



Thomas Propst  
704.787.4850  
thomas@nparealestate.com  
NC Real Estate Broker



704.782.7777  
nparealestate.com

HWY 601 S.  
Midland, NC 28107

**NORTHSTATE**  
PROPERTY ADVISORS



DEMOGRAPHICS		
	1 Mile Radius	3 Mile Radius
Population	281	2,740
Unemployment Rate	0.27%	0.80%
Average Household Income	\$65,468	\$68,553
Median Household Income	\$65,029	\$58,620

\*Data provided by Moody's Analytics and generated 8/20/2024



704.782.7777  
nparealestate.com