

ROCKWOOD PLAZA

3513-3523 COURTHOUSE RD, RICHMOND, VA 23236



NOW LEASING | RETAIL SPACE | 1,400 - 5,243 SF



ANDY WALSH
President/Principal Broker
571.237.0264
AndyW@sugaroak.com

ALLAN SHARRETT
Vice President, Sales/Leasing
804.901.4454
AllanS@sugaroak.com

ROCKWOOD PLAZA

3513-3523 COURTHOUSE RD, RICHMOND, VA 23236



PROPERTY HIGHLIGHTS



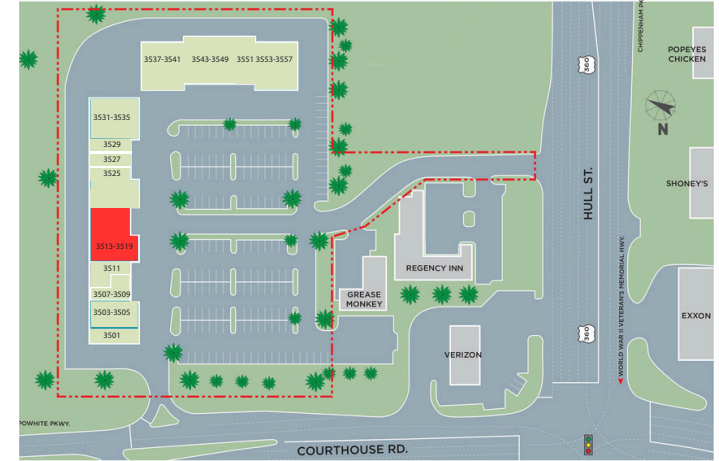
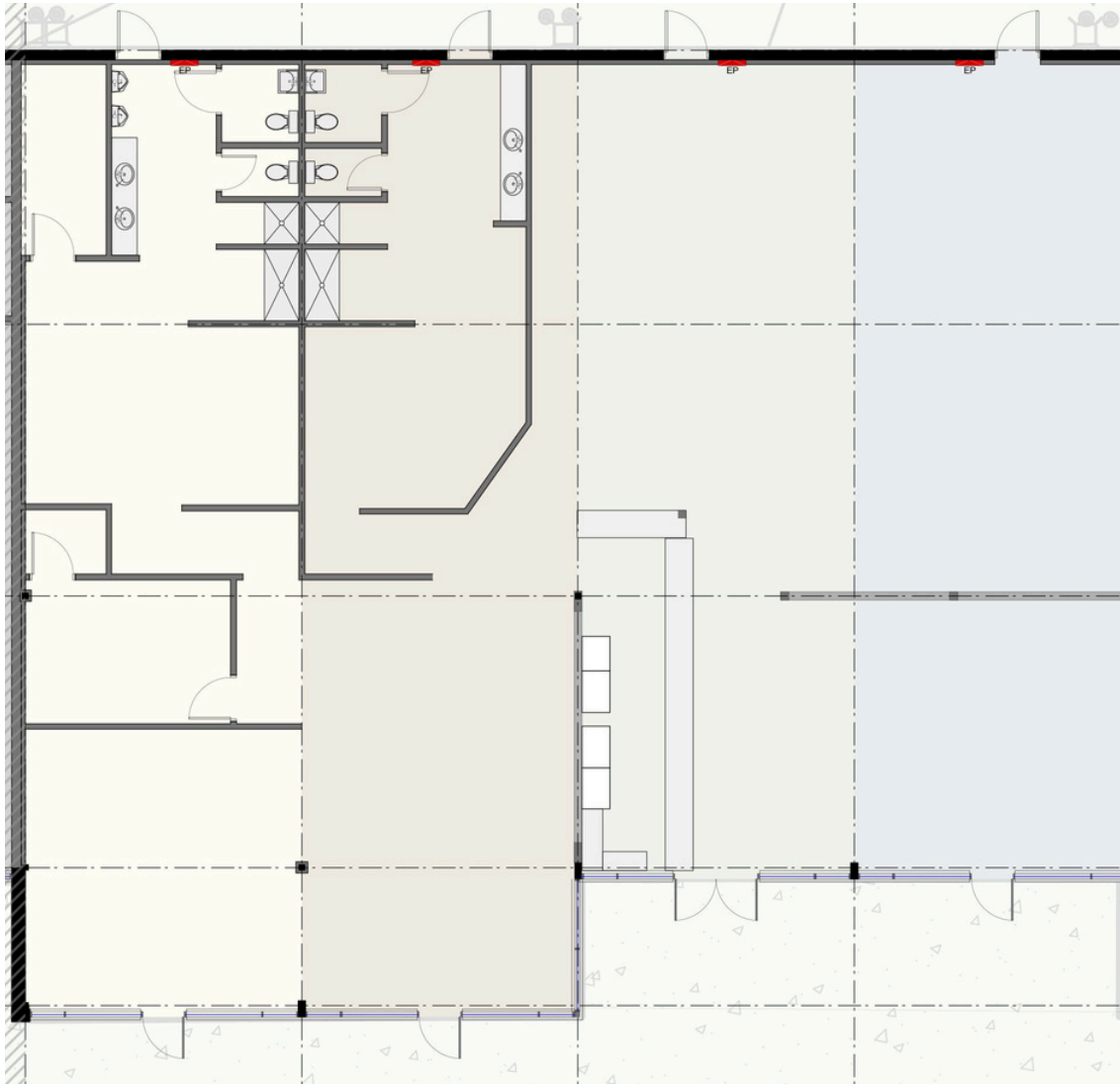
- Excellent visibility along Courthouse Road and Hull Street Road
- Abundant parking (4.54/1,000 SF)
- C-3 Community Business zoning
- Monument signage along Courthouse Road and Hull Street Road
- Traffic Counts: 32,000 VPD on Hull Street Road and 16,000 VPD on Courthouse Road

ROCKWOOD PLAZA

3513-3523 COURTHOUSE RD, RICHMOND, VA 23236



AVAILABLE FLOOR PLAN | UNIT 1513-19 | 5,243 SF



www.sugaroak.com | 2809 Emerywood Pkwy, #110 | Richmond, VA 23294 | 804.956.3448

ANDY WALSH
President/Principal Broker
571.237.0264
AndyW@sugaroak.com

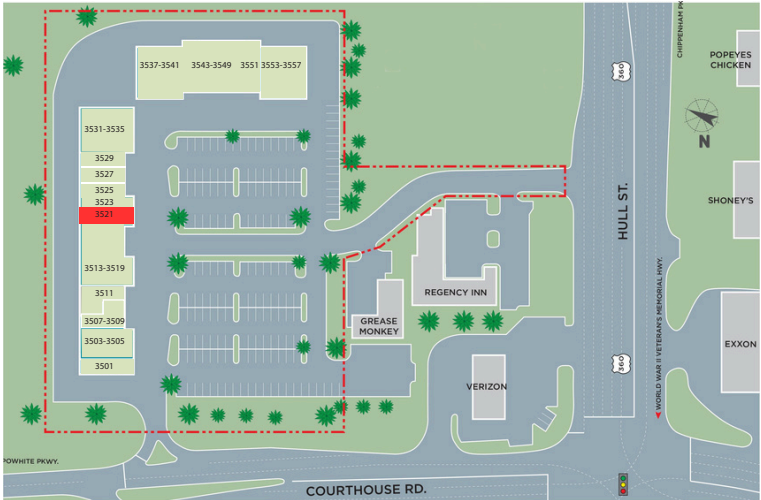
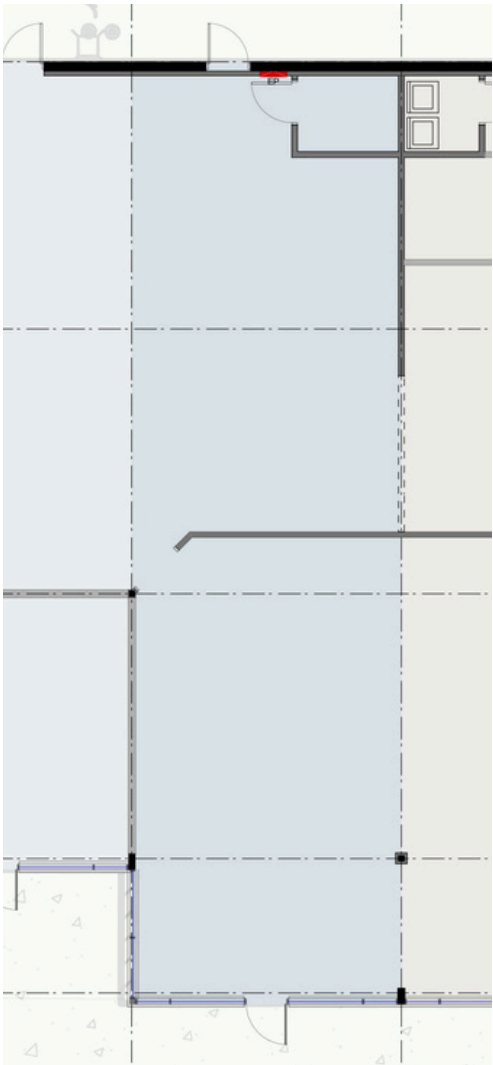
ALLAN SHARRETT
Vice President, Sales/Leasing
804.901.4454
AllanS@sugaroak.com

ROCKWOOD PLAZA

3513-3523 COURTHOUSE RD, RICHMOND, VA 23236



AVAILABLE FLOOR PLAN | UNIT 3521 | 1,400 SF

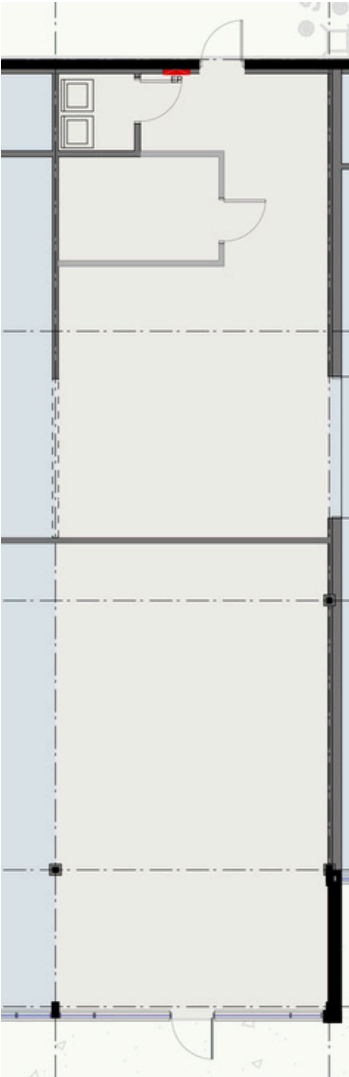


ROCKWOOD PLAZA

3513-3523 COURTHOUSE RD, RICHMOND, VA 23236



AVAILABLE FLOOR PLAN | UNIT 3523 | 1,403 SF



ROCKWOOD PLAZA

3513-3523 COURTHOUSE RD, RICHMOND, VA 23236



UNIT PHOTOS



www.sugaroak.com | 2809 Emerywood Pkwy, #110 | Richmond, VA 23294 | 804.956.3448

ANDY WALSH
President/Principal Broker
571.237.0264
AndyW@sugaroak.com

ALLAN SHARRETT
Vice President, Sales/Leasing
804.901.4454
AllanS@sugaroak.com

ROCKWOOD PLAZA

3513-3523 COURTHOUSE RD, RICHMOND, VA 23236



LOCATION

