

2215 Harbor Blvd, Costa Mesa, Ca 92627

PLATINUM
properties



TRAVIS LBOUF
BROKER ASSOCIATE
CABRE# 01938822
BROKER # 02247644
TLEBOUF.RE@GMAIL.COM
310-882-0659

Platinum
Properties Real Estate

6201 E. BAYSHORE WALK
LONG BEACH, CA 90803
DRE # 02247644

2215 Harbor Blvd , Costa Mesa, Ca 92627

PLATINUM
properties

Asking Price: \$7,250,000.00

Building SF: ±13,414

Total Lot SF: ±25,180

APN: 422-193-23

Zoning: C-2



2215 Harbor Blvd is located
Northwest of the 55 Freeway and
adjacent to the Harbor Center
shopping center!

TRAVIS LÉBOUF
BROKER ASSOCIATE
CA BRE# 01938822
BROKER # 02247644
TLEBOUF.RE@GMAIL.COM
310-882-0659

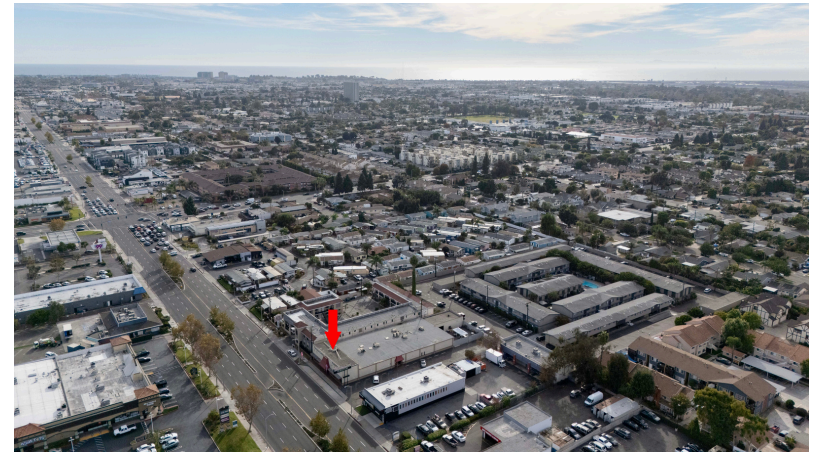
Platinum
Properties Real Estate

6201 E. BAYSHORE WALK
LONG BEACH, CA 90803
DRE # 02247644

2215 Harbor Blvd, Costa Mesa, Ca 92627

PLATINUM
properties

2215 Harbor Blvd is zoned C2 which offers a number of retail
and medical office uses.



TRAVIS LÉBOUF
BROKER ASSOCIATE
CA BRE# 01938822
BROKER # 02247644
TLEBOUF.RE@GMAIL.COM
310-882-0659

Platinum
Properties Real Estate

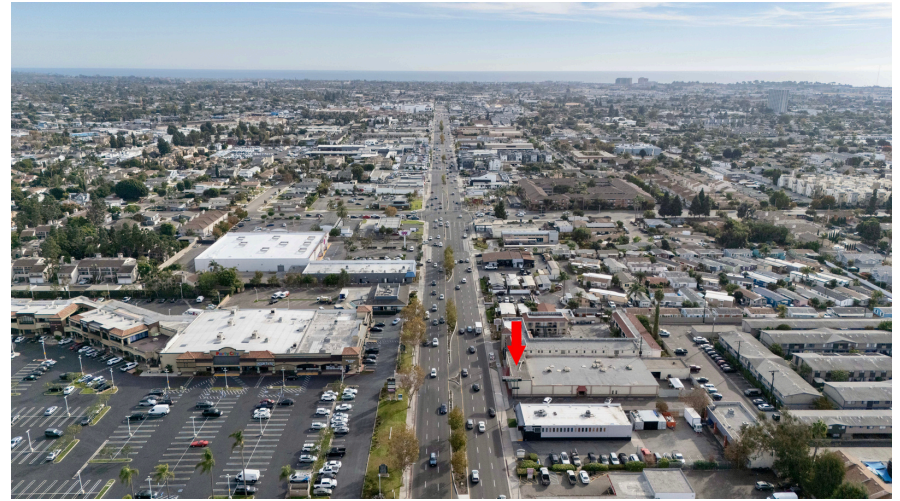
6201 E. BAYSHORE WALK
LONG BEACH, CA 90803
DRE # 02247644

2215 Harbor Blvd, Costa Mesa, Ca 92627

PLATINUM *properties*

±13454 SF Retail building located in the commercial corridor of Harbor Blvd in the city of Costa Mesa. Sitting on a ±25,000 Sflot, the property boasts a 10670 sf retail floor with a 1400 sf mezzanine. In addition to the main showroom the property offers a 1344 sf warehouse with 25 marked parking psaces.

The property is zoned C-2 which offers a number of busienes uses which allow great flexibility for an owner. user or investor.



TRAVIS LÉBOUF
BROKER ASSOCIATE
CA BRE# 01938822
BROKER # 02247644
TLEBOUF.RE@GMAIL.COM
310-882-0659

Platinum
Properties Real Estate

6201 E. BAYSHORE WALK
LONG BEACH, CA 90803
DRE # 02247644