

147-05 JAMAICA AVENUE

BETWEEN SUTPHIN BOULEVARD & 148TH STREET | JAMAICA

RETAIL FOR LEASE



Albert Salameh
646.944.0797

Cory Mais
201.637.0056

David Green
516.320.0260

RETAIL FOR LEASE



Albert Salameh
646.944.0797

Cory Mais
201.637.0056

David Green
516.320.0260

14709

BEDROOMS · MATTRESS · LIVING ROOMS AND MORE... **718-880-1511**



147-05 JAMAICA AVENUE

BETWEEN SUTPHIN BOULEVARD & 148TH STREET | JAMAICA

PROPERTY HIGHLIGHTS

- Prime Jamaica Avenue location
- High foot & vehicle traffic area
- Excellent Neighboring Tenants: *Little Caesars Pizza, Dunkin', Capital One Bank, Pollo Campero, Subway, Kennedy Fried Chicken, Texas Burgers, T-Mobile, Chipotle, Walgreens, Bank of America, Rainbow, Starbucks, & many more!*

SIZE: 4,600 SF Ground Floor
5,000 SF Useable Lower Level

FRONTAGE: 30'

POSSESSION: Immediate

ASKING RENT: Upon Request

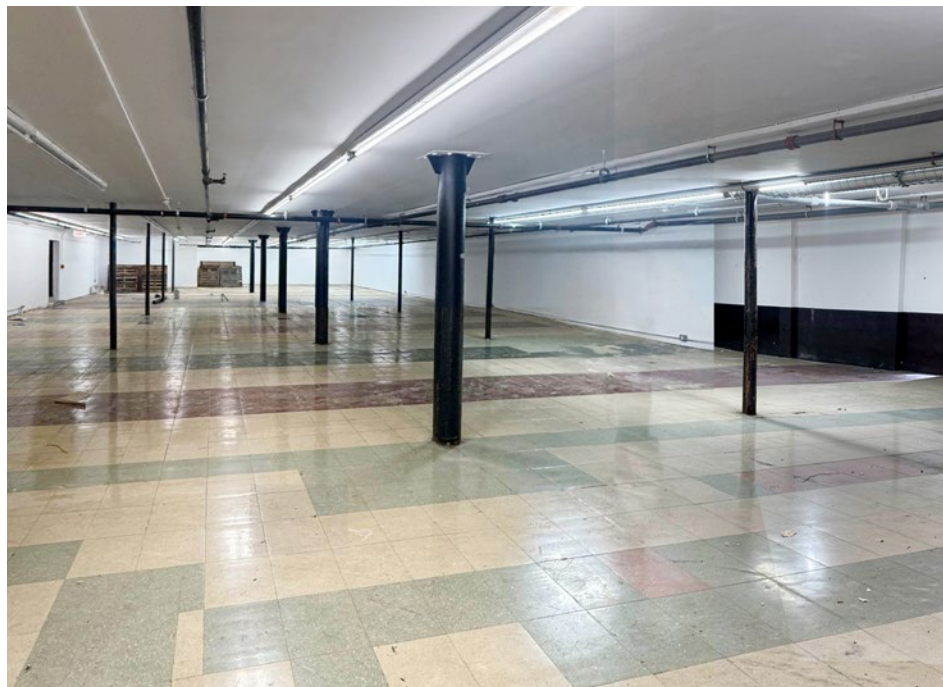
TRANSPORTATION: E J Z



147-05 JAMAICA AVENUE

BETWEEN SUTPHIN BOULEVARD & 148TH STREET | JAMAICA

INTERIORS:



All information supplied in this marketing presentation and/or flyer is from sources deemed reliable and is furnished subject to errors, omissions, modifications, removal of listings from sale/lease and to any listing condition. Any square footage, dimensions, floor plans and/or technical data set forth are approximations and are subject to further elaboration/confirmation.

147-05 JAMAICA AVENUE

BETWEEN SUTPHIN BOULEVARD & 148TH STREET | JAMAICA

FOR MORE INFORMATION,
PLEASE CONTACT:

CORY MAIS

201.637.0056 | CMais@ksrny.com

ALBERT SALAMEH

646.944.0797 | ASalameh@ksrny.com

DAVID GREEN

516.320.0260 | DDGreen@ksrny.com

