

**\$100 TOURING BONUS AND A 5% FEE TO PROCURING BROKER**



## Quality Office Space For Lease

**156 DIABLO ROAD, DANVILLE**

### **Suite 110**

- ±2,254 RSF with very high end new improvements
- 5 Private offices, Conference room, Kitchen

### **Suite 120**

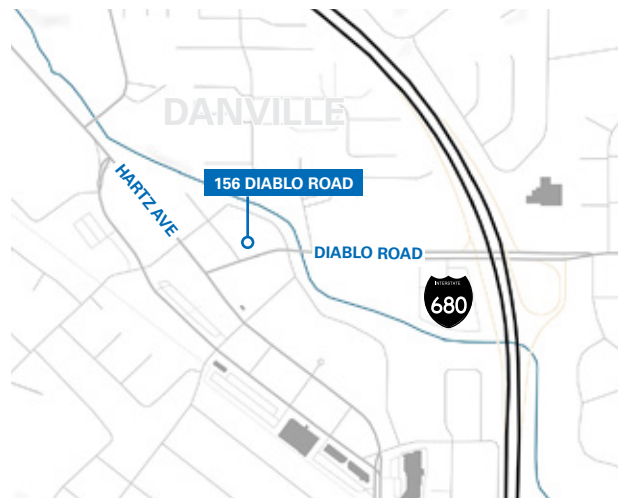
- ±1,383 RSF

### **Suite 130**

- ±428 RSF

### **Suite 300**

- ±3,475 RSF
- 8 private offices
- Conference room
- Copy/Storage Room
- Kitchen



*For information, please contact:*

### **Rick Steffens**

Senior Managing Director

t 925-974-0110

rick.steffens@nrmk.com

CA RE Lic. #00466002

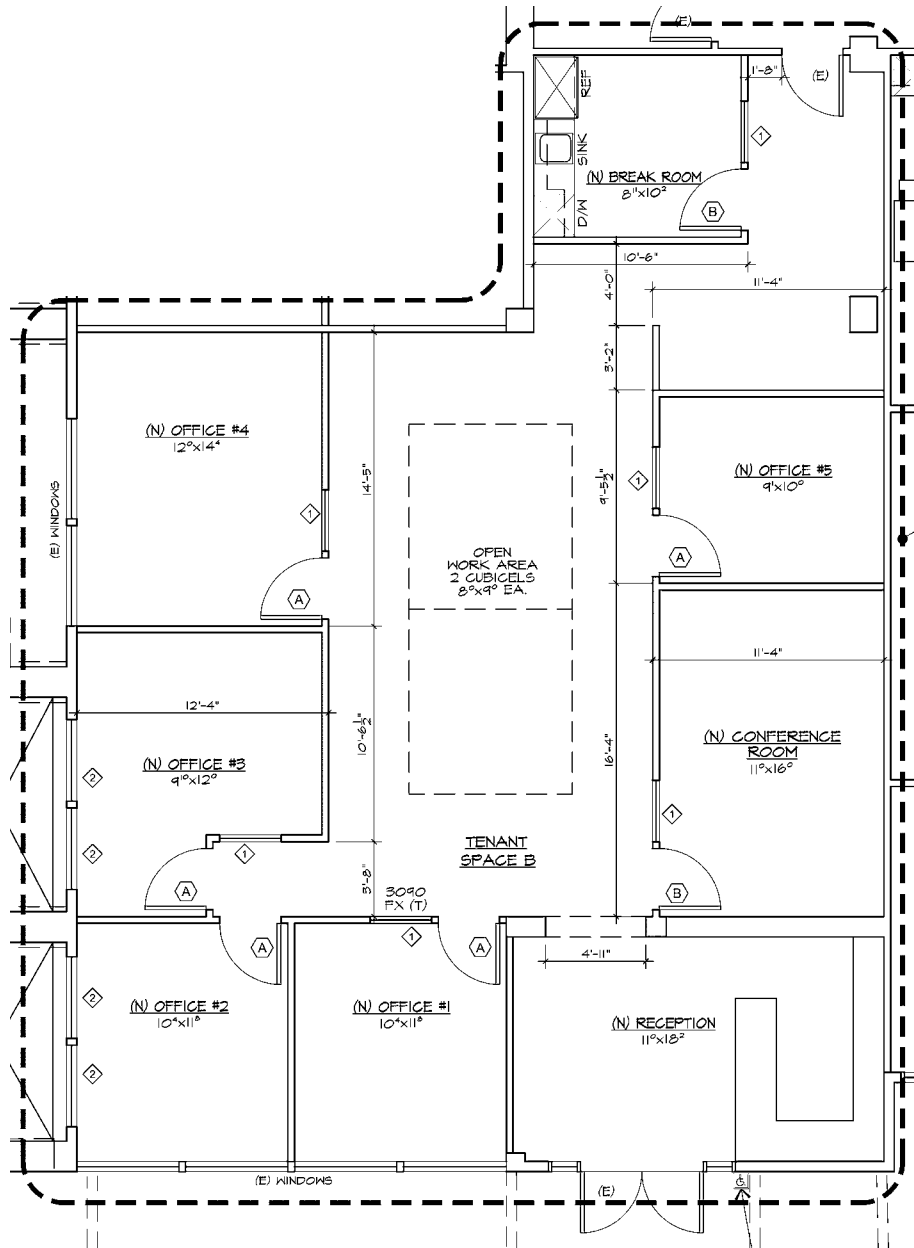
[nrmk.com](http://nrmk.com)

**NEWMARK**

The distributor of this communication is performing acts for which a real estate license is required. The information contained herein has been obtained from sources deemed reliable but has not been verified and no guarantee, warranty or representation, either express or implied, is made with respect to such information. Terms of sale or lease and availability are subject to change or withdrawal without notice.

# FLOOR PLAN - SUITE 110

±2,254 RSF



For information, please contact:

**Rick Steffens**

Senior Managing Director

t 925-974-0110

rick.steffens@nrmk.com

CA RE Lic. #00466002

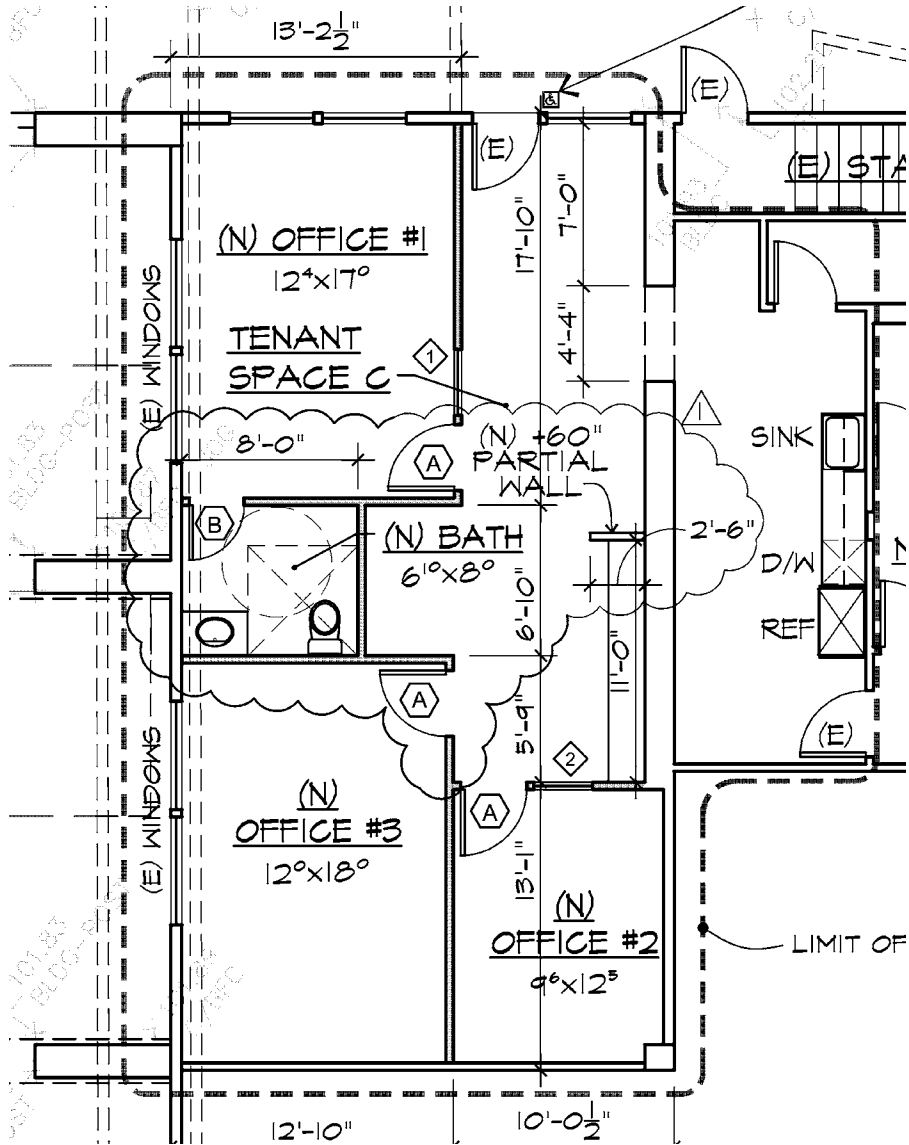
[nrmk.com](http://nrmk.com)

# NEWMARK

The distributor of this communication is performing acts for which a real estate license is required. The information contained herein has been obtained from sources deemed reliable but has not been verified and no guarantee, warranty or representation, either express or implied, is made with respect to such information. Terms of sale or lease and availability are subject to change or withdrawal without notice.

**FLOOR PLAN - SUITE 120**

±1,383 RSF



For information, please contact:

**Rick Steffens**

Senior Managing Director

t 925-974-0110

rick.steffens@nrmk.com

CA RE Lic. #00466002

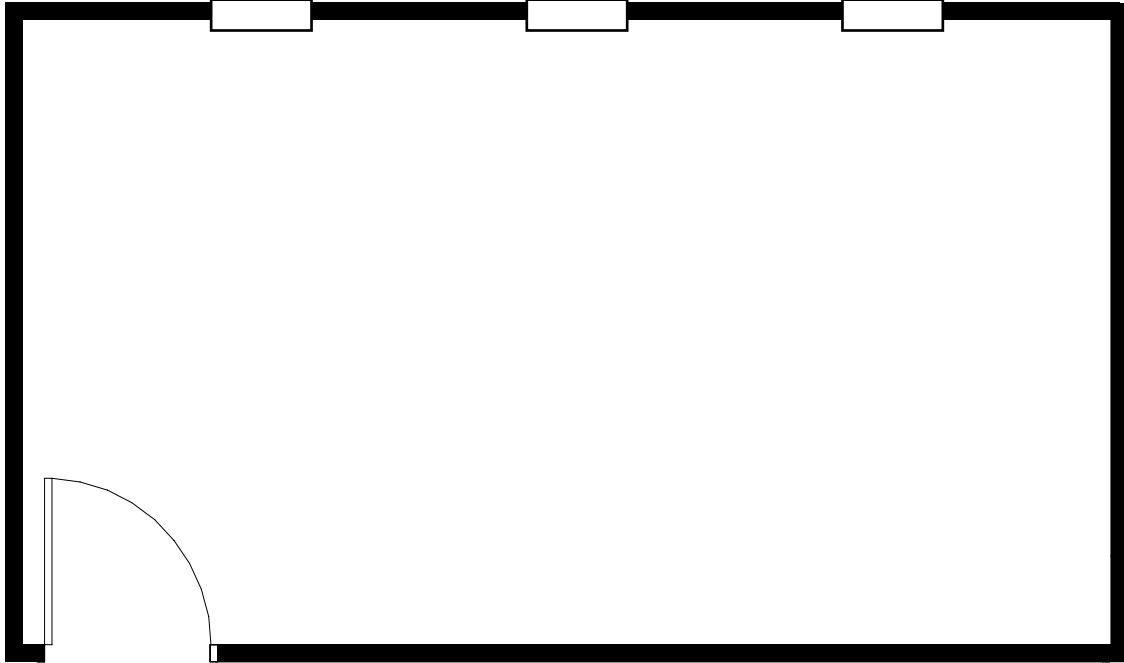
[nrmk.com](http://nrmk.com)

**NEWMARK**

The distributor of this communication is performing acts for which a real estate license is required. The information contained herein has been obtained from sources deemed reliable but has not been verified and no guarantee, warranty or representation, either express or implied, is made with respect to such information. Terms of sale or lease and availability are subject to change or withdrawal without notice.

**FLOOR PLAN - SUITE 130**

±428 RSF



*For information, please contact:*

**Rick Steffens**

*Senior Managing Director*

t 925-974-0110

rick.steffens@nmrk.com

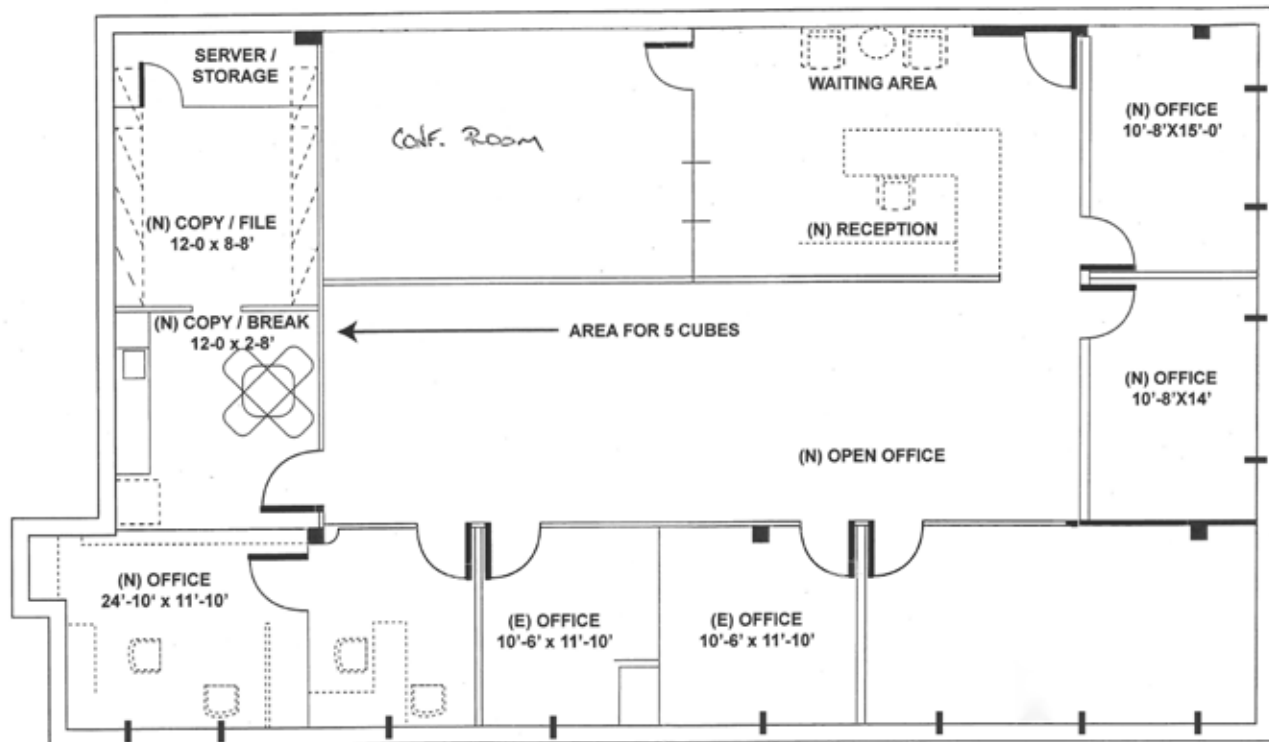
CA RE Lic. #00466002

[nmrk.com](http://nmrk.com)

**NEWMARK**

The distributor of this communication is performing acts for which a real estate license is required. The information contained herein has been obtained from sources deemed reliable but has not been verified and no guarantee, warranty or representation, either express or implied, is made with respect to such information. Terms of sale or lease and availability are subject to change or withdrawal without notice.

SUITE 300 - ± 3,475 RSF



For information, please contact:

**Rick Steffens**

Senior Managing Director

t 925-974-0110

rick.steffens@nrmk.com

CA RE Lic. #00466002

[nrmk.com](http://nrmk.com)

**NEWMARK**

The distributor of this communication is performing acts for which a real estate license is required. The information contained herein has been obtained from sources deemed reliable but has not been verified and no guarantee, warranty or representation, either express or implied, is made with respect to such information. Terms of sale or lease and availability are subject to change or withdrawal without notice.