



LOCATION DESCRIPTION

This medical office building is located on the CHRISTUS Ochsner Lake Area Hospital Campus in the busy South Lake Charles area. Medical professionals and office tenants will value the proximity to other esteemed medical facilities. This dynamic area provides a perfect blend of accessibility and amenities, making it an ideal choice for a medical office.

OFFERING SUMMARY

Lease Rate:	\$21.00 SF/yr (NNN)
Number of Units:	1 - Suite C12
Building Size:	4,888 SF
Available SF:	2,278 SF
NNN:	\$4.90
Address:	4150 Nelson Road, Bld. C Lake Charles, LA 70605

DEMOGRAPHICS	1 MILE	2 MILES	3 MILES
Total Households	3,138	11,482	20,869
Total Population	6,708	23,975	45,008
Average HH Income	\$91,204	\$80,401	\$74,038

NVST Real Estate Solutions, LLC
500 Kirby Street, Lake Charles, LA 70601
337.433.0511 | NVSTrealstate.com

Blake Soto, CCIM
337.764.6556
bsoto@nvstrealstate.com

J. Hardtner Klumpp, CCIM
337.263.2397
hklumpp@nvstrealstate.com

All information contained herein is from sources deemed reliable; however, no representation or warranty is made to the accuracy thereof.



NVST Real Estate Solutions, LLC
500 Kirby Street, Lake Charles, LA 70601
337.433.0511 | NVSTrealestate.com

Blake Soto, CCIM
337.764.6556
bsoto@nvstrealestate.com

J. Hardtner Klumpp, CCIM
337.263.2397
hklumpp@nvstrealestate.com

All information contained herein is from sources deemed reliable; however, no representation or warranty is made to the accuracy thereof.

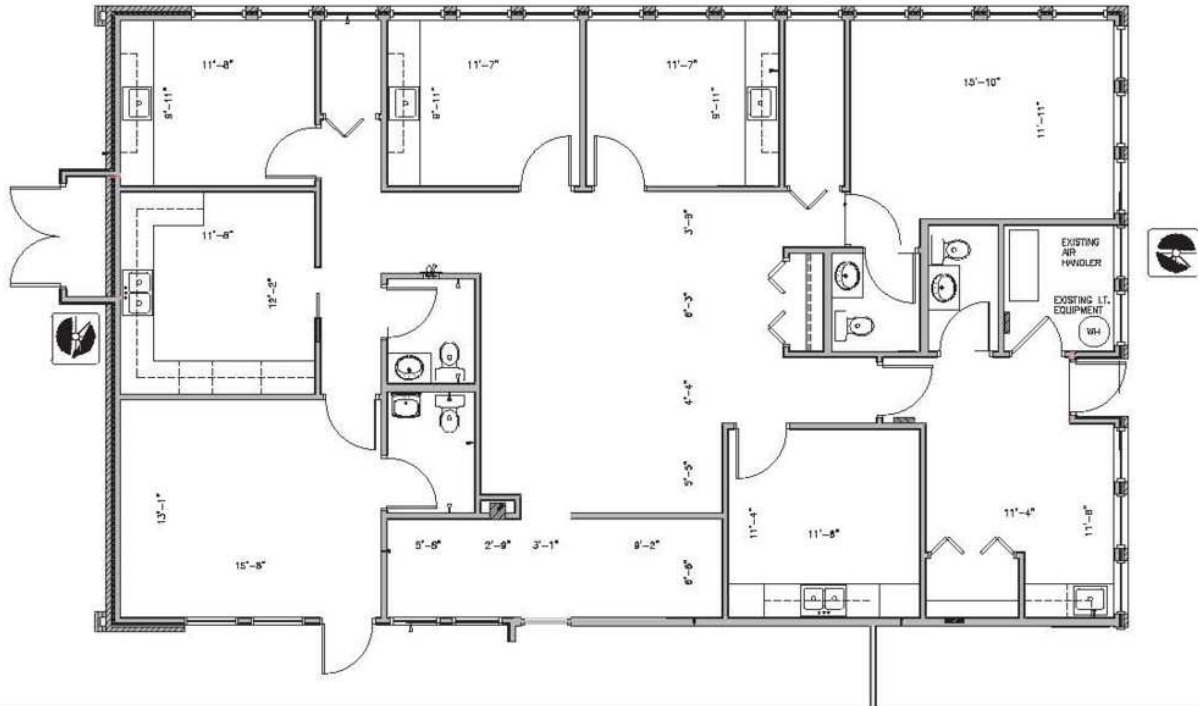


NVST Real Estate Solutions, LLC
 500 Kirby Street, Lake Charles, LA 70601
 337.433.0511 | NVSTrealestate.com

Blake Soto, CCIM
 337.764.6556
 bsoto@nvstrealestate.com

J. Hardtner Klumpp, CCIM
 337.263.2397
 hklumpp@nvstrealestate.com

All information contained herein is from sources deemed reliable; however, no representation or warranty is made to the accuracy thereof.



NVST Real Estate Solutions, LLC
 500 Kirby Street, Lake Charles, LA 70601
 337.433.0511 | NVSTrealestate.com

Blake Soto, CCIM
 337.764.6556
 bsoto@nvstrealestate.com

J. Hardtner Klumpp, CCIM
 337.263.2397
 hklumpp@nvstrealestate.com

All information contained herein is from sources deemed reliable; however, no representation or warranty is made to the accuracy thereof.



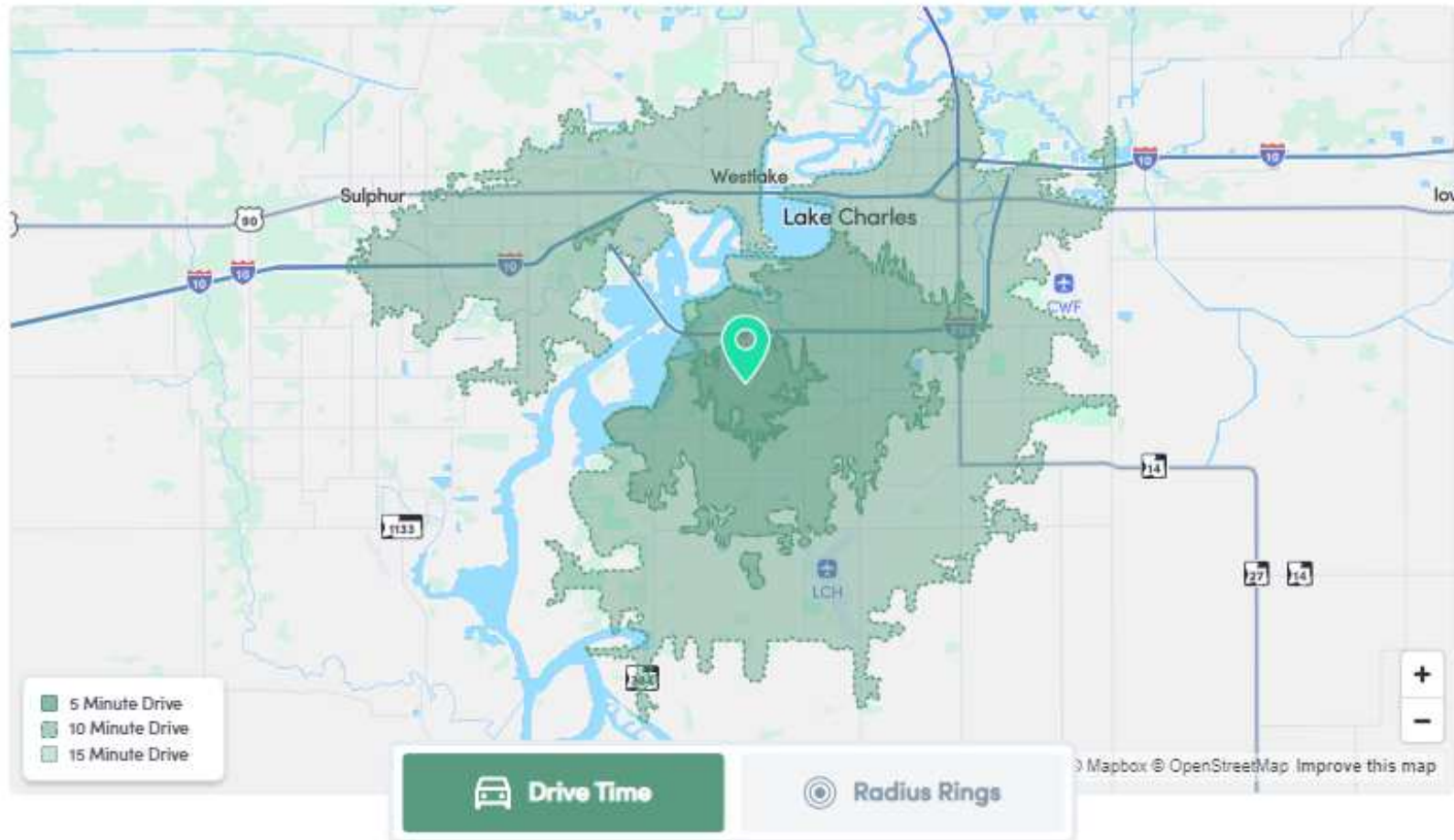
Map data ©2024 Imagery ©2024 Airbus, CNES / Airbus, Landsat / Copernicus, Maxar Technologies

NVST Real Estate Solutions, LLC
500 Kirby Street, Lake Charles, LA 70601
337.433.0511 | NVSTrealestate.com

Blake Soto, CCIM
337.764.6556
bsoto@nvstrealestate.com

J. Hardtner Klumpp, CCIM
337.263.2397
hklumpp@nvstrealestate.com

All information contained herein is from sources deemed reliable; however, no representation or warranty is made to the accuracy thereof.



NVST Real Estate Solutions, LLC
500 Kirby Street, Lake Charles, LA 70601
337.433.0511 | NVSTrealestate.com

Blake Soto, CCIM
337.764.6556
bsoto@nvstrealestate.com

J. Hardtner Klumpp, CCIM
337.263.2397
hklumpp@nvstrealestate.com

All information contained herein is from sources deemed reliable; however, no representation or warranty is made to the accuracy thereof.