

FOR SUBLEASE

7,500 SF

3,750 SF OF OFFICE SPACE*
\$1.35 NNN
APPROXIMATELY

LONGER DIRECT TERM AVAILABLE



PROPERTY HIGHLIGHTS

19779
BAHAMA STREET
NORTHRIDGE, CA



YARD

PRIVATE/FENCED



SUBLEASE

THRU MAY 31, 2026



HVAC

FULLY AIR
CONDITIONED



POWER

600 AMPS | 480 VOLT
(TO BE VERIFIED*)



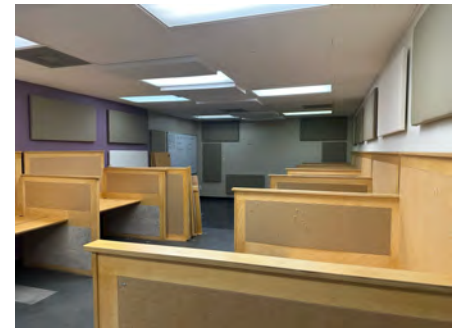
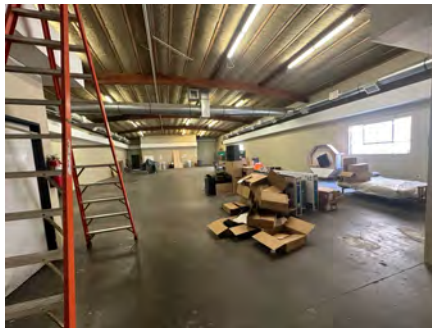
AVAILABILITY

IMMEDIATE
OCCUPANCY



15'

WAREHOUSE
CLEARANCE



spectrumcre.com | 818.252.9900

SPECTRUM
COMMERCIAL REAL ESTATE, INC.



RON KASSAN

Executive Vice President
818.512.5001
ron@availablewarehouses.com
CA DRE Lic. #01063078



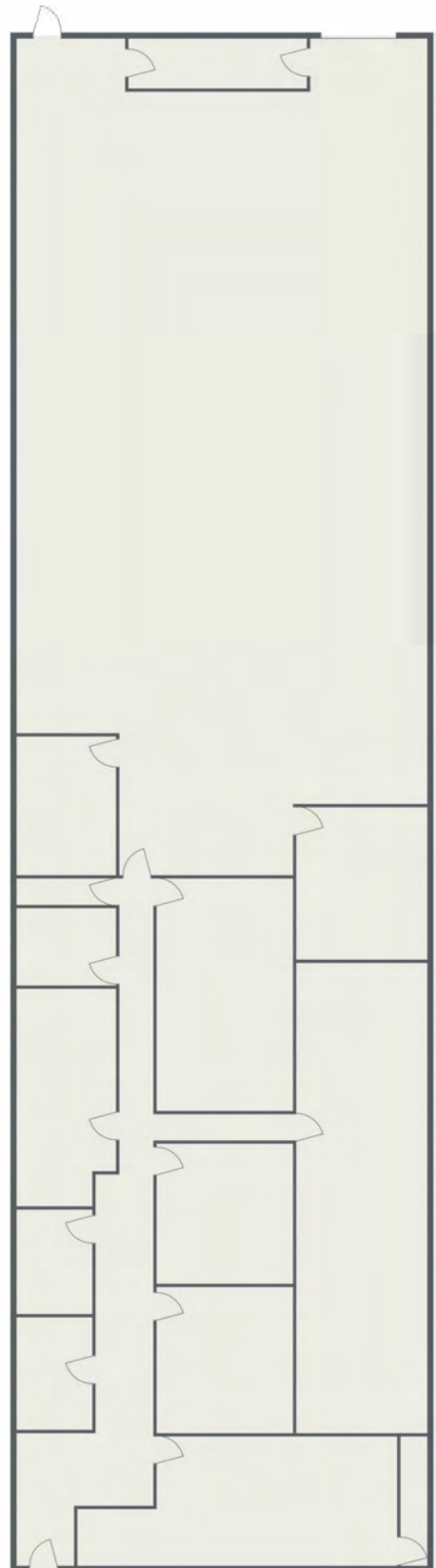
ART MINASSIAN

Senior Vice President
818.634.3722
art@availablewarehouses.com
CA DRE Lic. #02026662



No warranty, express or implied, is made as to the accuracy of the information contained herein. This information is submitted subject to errors, omission, change of price, rental or other conditions, withdrawal without notice, and is subject to any special listing conditions imposed by our principals. Cooperating brokers, buyers, tenants and other parties who receive this document should not rely on it, but should use it as a starting point of analysis, and should independently confirm the accuracy of the information contained herein through a due diligence review of the books, records, files and documents that constitute reliable sources of the information described herein. Spectrum Commercial Real Estate, Inc. CA DRE #02042805

19779
BAHAMA STREET
 NORTHRIDGE, CA



spectrumcre.com | 818.252.9900

SPECTRUM
 COMMERCIAL REAL ESTATE, INC.



RON KASSAN



Executive Vice President
 818.512.5001
ron@availablewarehouses.com
 CA DRE Lic. #01063078

ART MINASSIAN



Senior Vice President
 818.634.3722
art@availablewarehouses.com
 CA DRE Lic. #02026662

No warranty, express or implied, is made as to the accuracy of the information contained herein. This information is submitted subject to errors, omission, change of price, rental or other conditions, withdrawal without notice, and is subject to any special listing conditions imposed by our principals. Cooperating brokers, buyers, tenants and other parties who receive this document should not rely on it, but should use it as a starting point of analysis, and should independently confirm the accuracy of the information contained herein through a due diligence review of the books, records, files and documents that constitute reliable sources of the information described herein. Spectrum Commercial Real Estate, Inc. CA DRE #02042805