



COMMERCIAL REALTY SOLUTIONS

For Lease  
Professional Office  
Building



# HUTCHINSON

## Professional Office Building

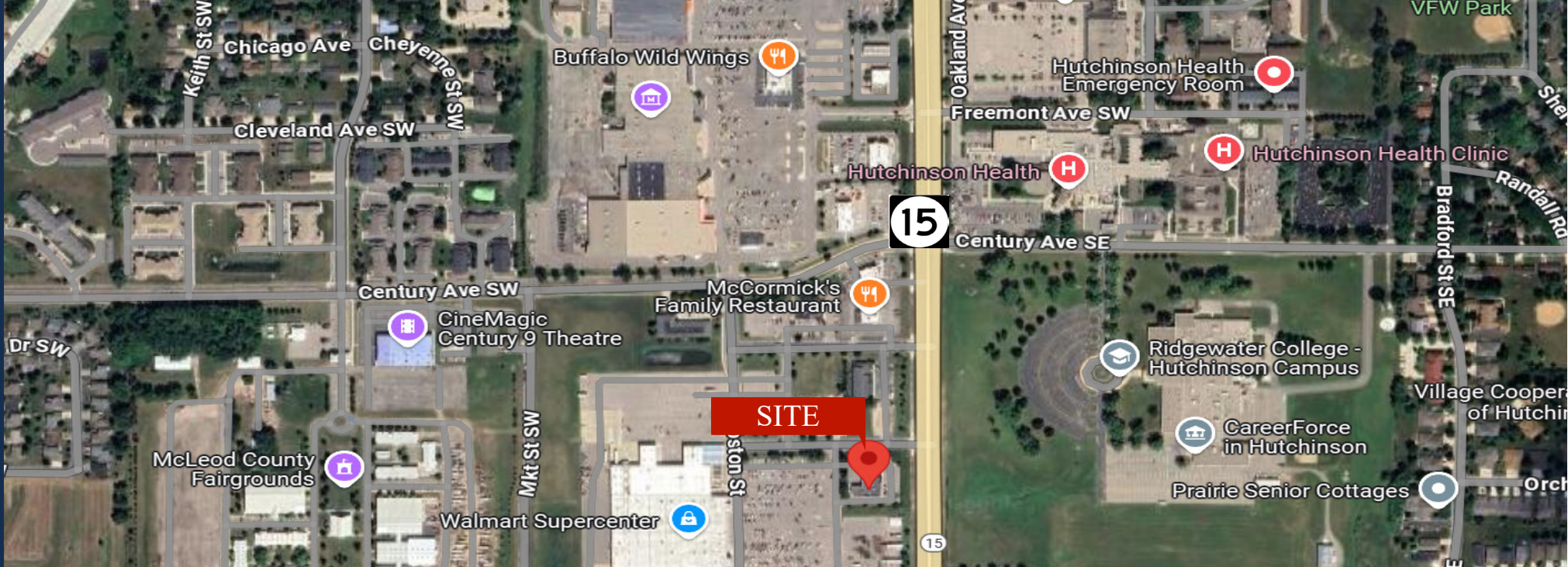
Lease Rate: \$8.00 - \$15.00/psf

Available: Main Floor 910/sf, Lower Level (1) Suite 864/sf

1250 Highway 15 S., Hutchinson, MN 55350

Joseph Elam, Broker  
320.282.8410  
JElam@Crs-Mn.com

Wayne Elam, Broker  
763.229.4982  
WElam@Crs-Mn.com



## PROPERTY LOCATION

- \* Quick and Easy Access to Highway 15
- \* Less than 1 hour from Minneapolis
- \* Just 45 miles from I-94
- \* Regional Healthcare - Hutchinson Area Health Care
- \* Major retailers in the area include Walmart Super Center, Taco Bell, Target, Best Buy, Buffalo Wild Wing's, Game Stop, Hutchinson Community Hospital, McDonald's, Subway, KwikTrip, Liberty Tax, Applebee's and much more.

### TRAFFIC COUNTS - 2025

- \* Highway 15 - 13,000 VPD
- \* Century Ave. - 4,850 VPD



The information contained herein was obtained from sources believed to be reliable, but Commercial Realty Solutions has not verified nor has any knowledge regarding the accuracy of information and makes no representation or warranty concerning the same. Therefore, Commercial Realty Solutions disclaims all liabilities in connection with any inaccuracies or incompleteness. This marketing material is for the implicit use by Commercial Realty Solutions for the marketing of their listings and is not for use by other brokerage(s).

# PROPERTY OVERVIEW

1250 Highway 15 S, Hutchinson, MN

Lease Rate

**\$8.00 - \$15.00/psf**

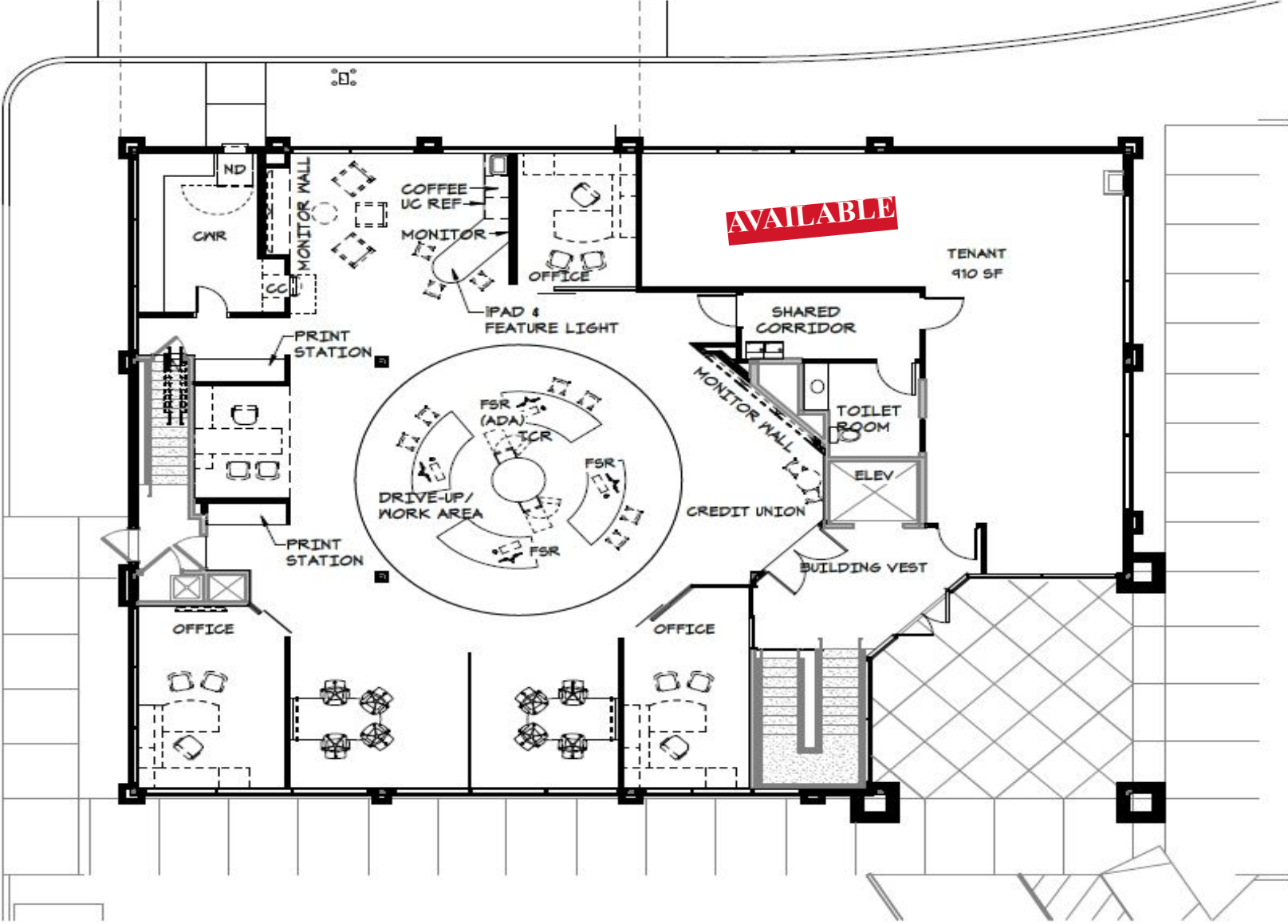
NNN Lease

Operating Expenses	\$7.50/psf (including utilities)
Building Size	10,000/sf
Space Available	Main Floor 910/sf Lower Level (1) Suite 864/sf
Lot Size	Approx. 1.0 Acre
County	McLeod
PID	23.317.0020 2026 Taxes \$30,828.00
Other	* Fastest growing city in Central, MN * Progressive and innovative community * State-of-the-art telecommunications service



This information has been secured from sources we believe to be reliable, but we make no representations or warranties explained or implied as to the accuracy of the information. Buyer must verify the information and bears all risk for any inaccuracies.

# FLOOR PLAN - MAIN LEVEL (910/sf)



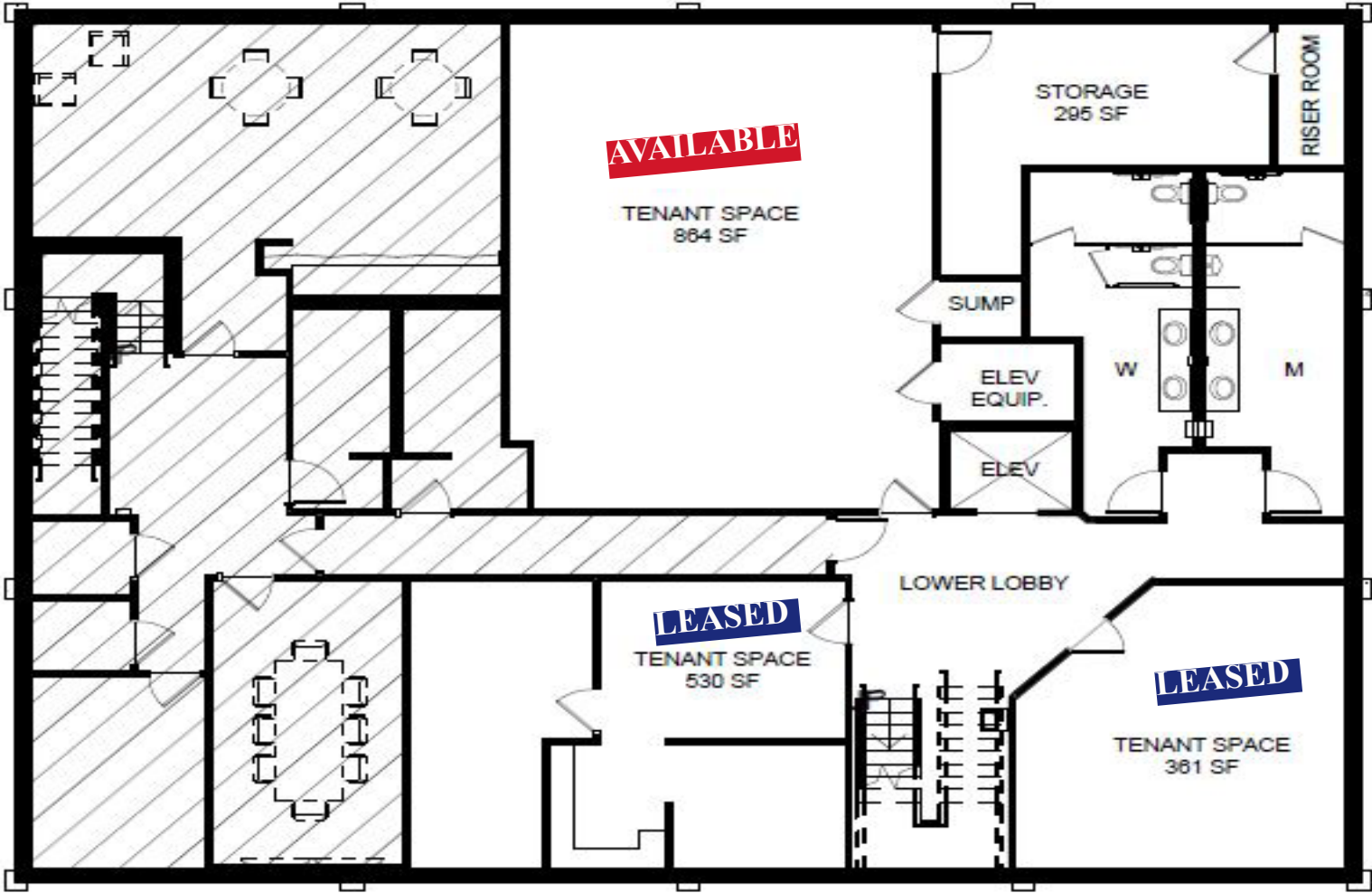
This information has been secured from sources we believe to be reliable, but we make no representations or warranties explained or implied as to the accuracy of the information. Buyer must verify the information and bears all risk for any inaccuracies.

# INTERIOR PHOTOS - MAIN LEVEL



This information has been secured from sources we believe to be reliable, but we make no representations or warranties explained or implied as to the accuracy of the information. Buyer must verify the information and bears all risk for any inaccuracies.

# FLOOR PLAN - LOWER LEVEL (Suite #1 - 864/sf)



This information has been secured from sources we believe to be reliable, but we make no representations or warranties explained or implied as to the accuracy of the information. Buyer must verify the information and bears all risk for any inaccuracies.

# INTERIOR PHOTOS - LOWER LEVEL



This information has been secured from sources we believe to be reliable, but we make no representations or warranties explained or implied as to the accuracy of the information. Buyer must verify the information and bears all risk for any inaccuracies.