

LINDBLADE TOWER



3958 Ince Blvd

WHERE CREATIVITY FINDS IT HOME

Located in Culver City's renowned Hayden Tract community, Lindblade Tower invites creative professionals to work in a space that blends industrial flair with modern design. With over 5,000 square feet of inspiring workspaces, the building features glass-walled offices, exposed brick, concrete floors and an open kitchen.

Lindblade Tower also offers style and convenience with a private outdoor patio and dedicated on-site parking. Situated across from Amazon Studios and Sony Pictures Animation and sitting just steps from premier dining and retail, this innovative destination places tenants in the heart of Culver City's vibrant creative scene.



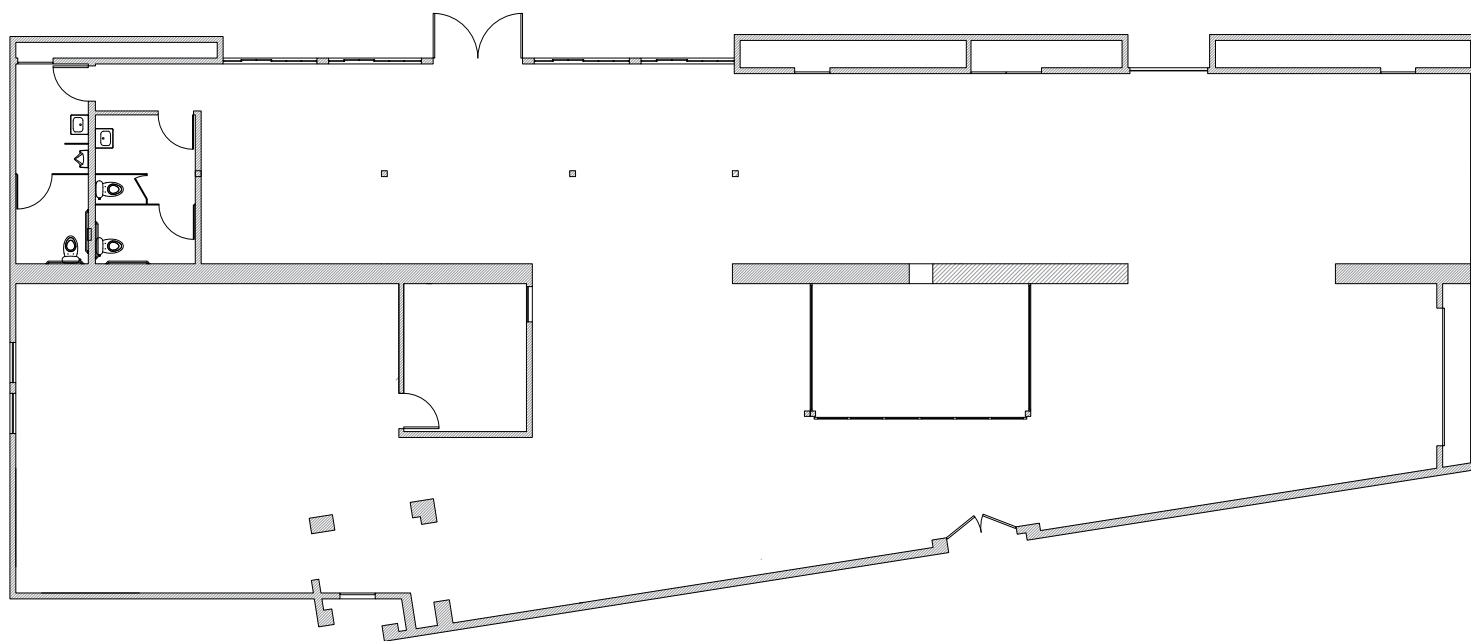
AVAILABLE NOW: 5,324 RSF



DESIGNED FOR VISIONARIES

Lindblade Tower offers a collection of private offices, fully equipped screening rooms, editing bays and conference rooms, all within a collaborative layout designed to inspire and support creative work.

AVAILABLE NOW: 5,324 RSF



THE FOREFRONT OF LA'S CREATIVE SCENE

Lindblade Tower empowers you to thrive in the creative epicenter of Westside LA, surrounded by industry leaders like Amazon, UCLA, and Apple. This dynamic location offers a hub of inspiration, providing endless opportunities to connect and collaborate with top minds in tech, media, and entertainment.



BALLONA CREEK BIKE PATH

METRO EXPO LINE

PARKING RATIO: 2:1,000 RSF

\$175 UNRESERVED

YOUR LINK TO THE CITY

With easy access to I-405 and I-10, Lindblade Tower puts you minutes from West Los Angeles, Santa Monica, and Century City, streamlining your daily commute. The nearby Ballona Creek Bike Path, a favorite among walkers, runners, and bikers, offers a scenic route straight to Santa Monica Bay, connecting you to the best of the Westside.



For More Information, Please Contact:

GABRIEL BROWN

+1 310 435 4344
gabe.brown@jll.com
CA Lic. 01441920

JOSH BERNSTEIN

+1 310 795 5947
josh.bernstein@cushwake.com
CA Lic. 01828093

ALEXA DELAHOKE

+1 626 340 5391
alexa.delahooke@cushwake.com
CA Lic. 02091695

©2025 Cushman & Wakefield. All rights reserved. The information contained in this communication is strictly confidential. This information has been obtained from sources believed to be reliable but has not been verified. NO WARRANTY OR REPRESENTATION, EXPRESS OR IMPLIED, IS MADE AS TO THE CONDITION OF THE PROPERTY (OR PROPERTIES) REFERENCED HEREIN OR AS TO THE ACCURACY OR COMPLETENESS OF THE INFORMATION CONTAINED HEREIN, AND SAME IS SUBMITTED SUBJECT TO ERRORS, OMISSIONS, CHANGE OF PRICE, RENTAL OR OTHER CONDITIONS, WITHDRAWAL WITHOUT NOTICE, AND TO ANY SPECIAL LISTING CONDITIONS IMPOSED BY THE PROPERTY OWNER(S). ANY PROJECTIONS, OPINIONS OR ESTIMATES ARE SUBJECT TO UNCERTAINTY AND DO NOT SIGNIFY CURRENT OR FUTURE PROPERTY PERFORMANCE. COE-PM-West-12.02.2024

