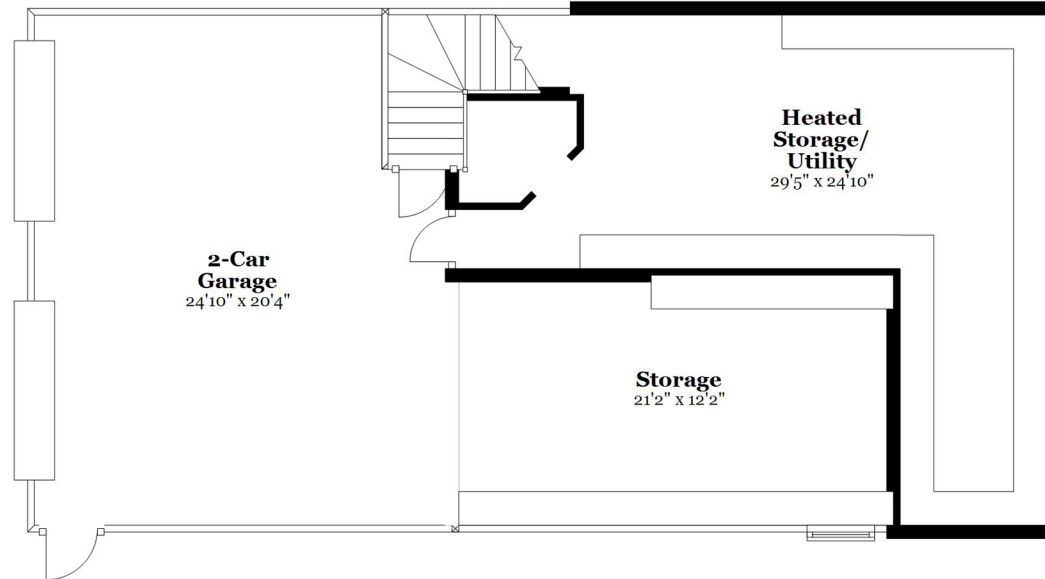


25 Popes Lane, Danvers, MA

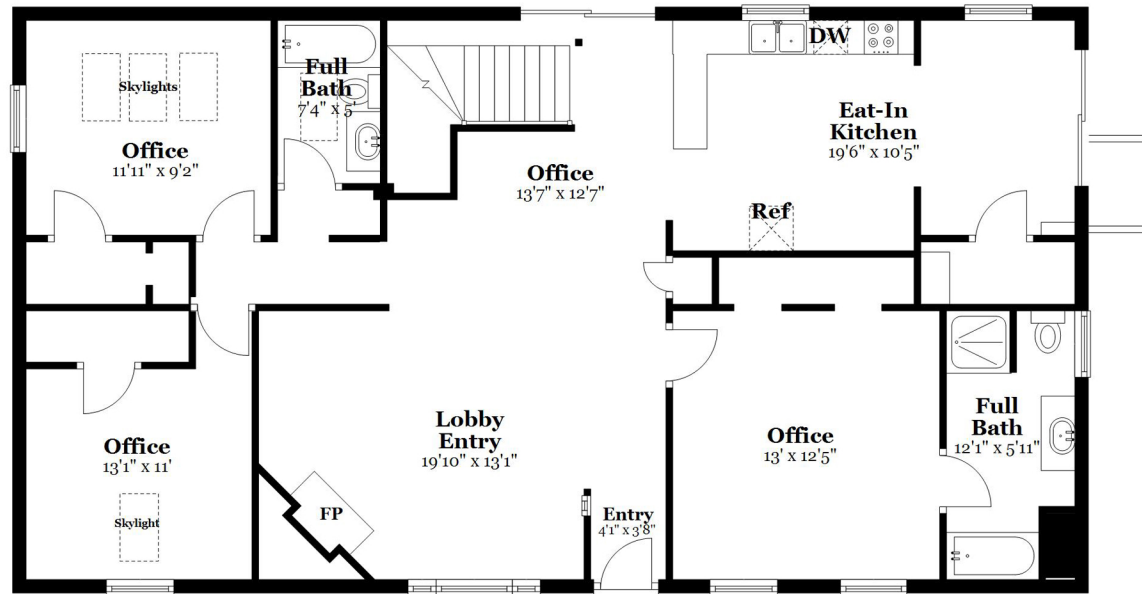
Basement - 7'7" Ceilings

Approx. 417.8 sq. feet



First Floor - 8'8" Ceilings

Approx. 1310.4 sq. feet

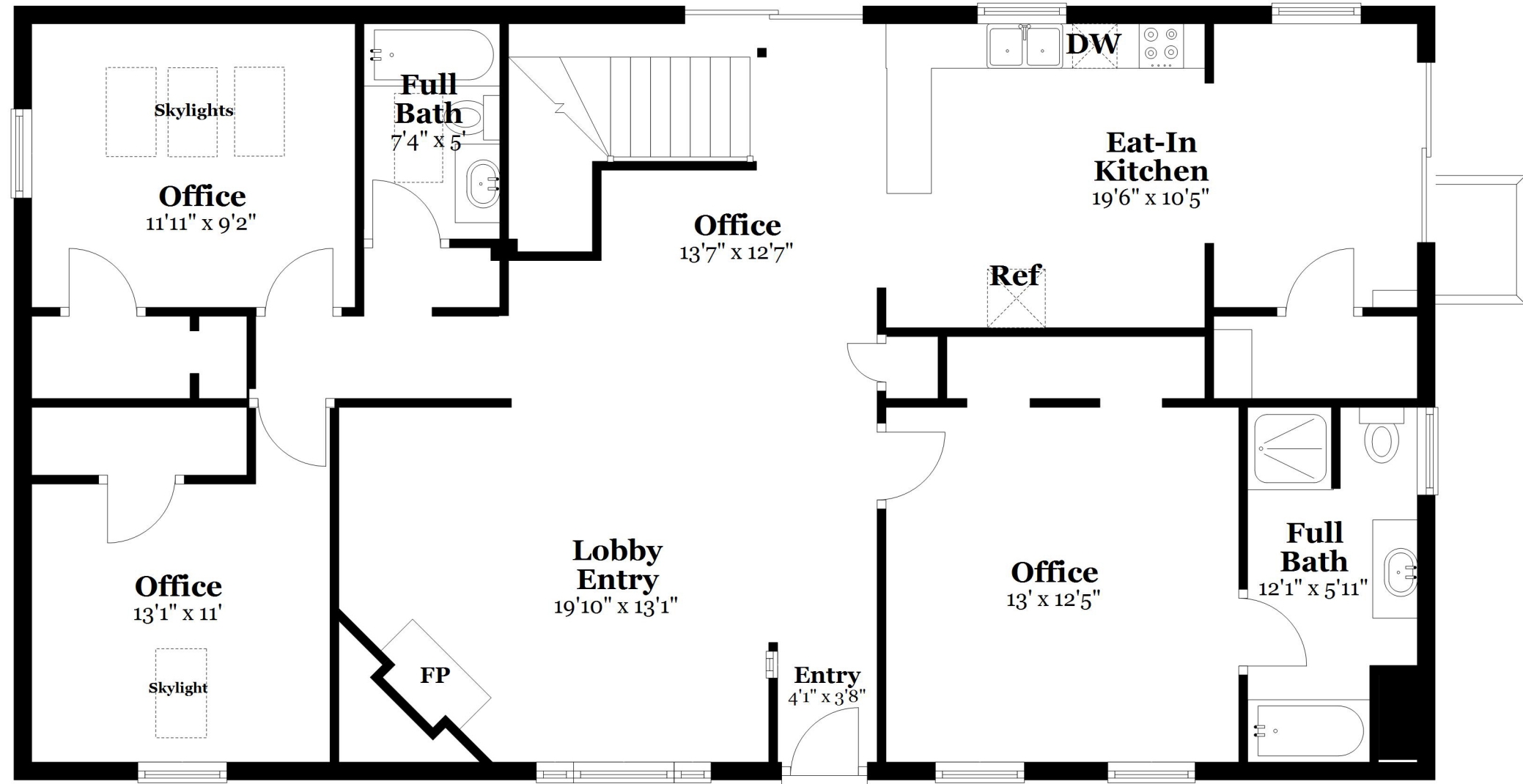


Plans are illustrative only. Dimensions, square footages, elevations and details may vary from the floor plans provided

25 Popes Lane, Danvers, MA

First Floor - 8'8" Ceilings

Approx. 1310.4 sq. feet

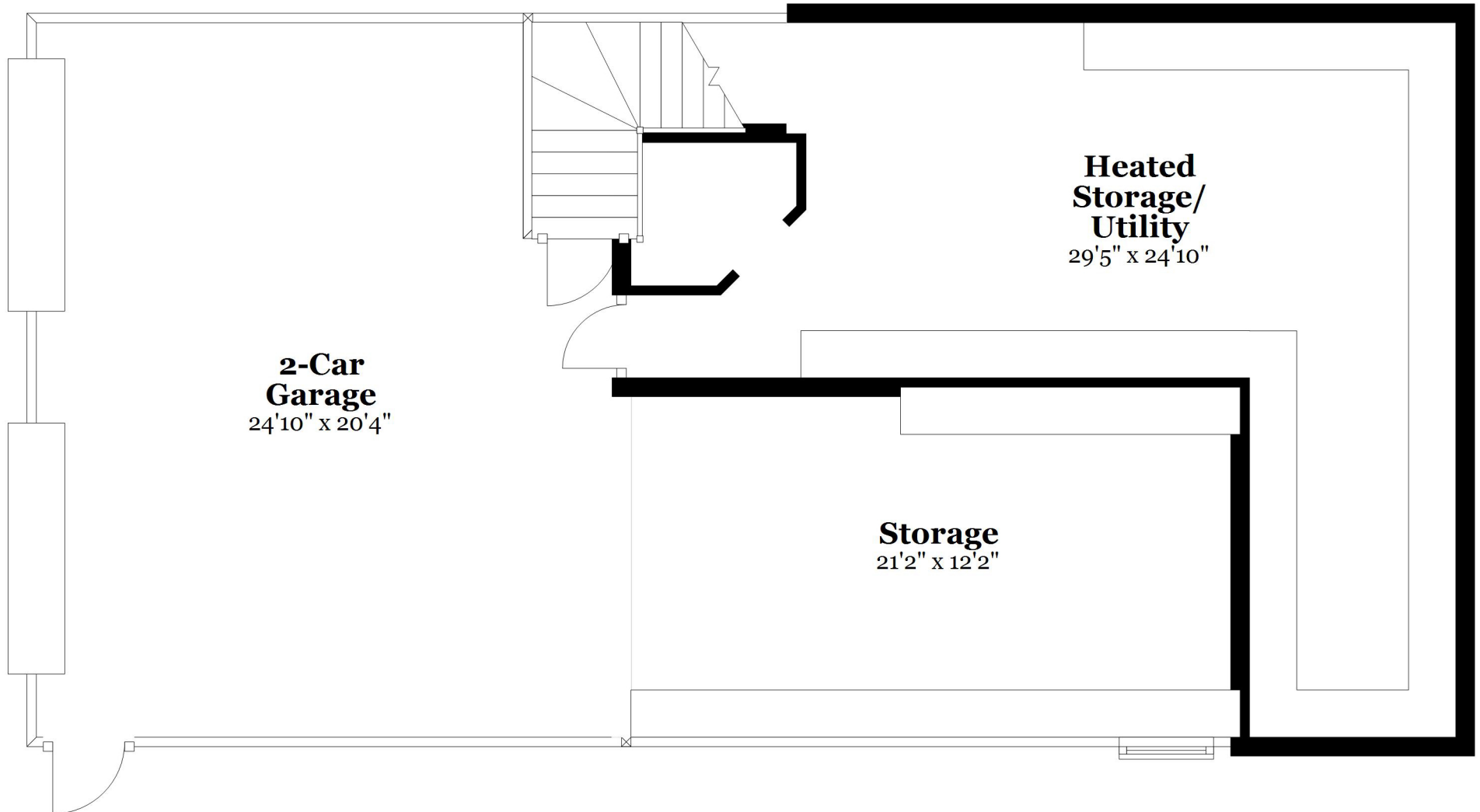


Plans are illustrative only. Dimensions, square footages, elevations and details may vary from the floor plans provided

25 Popes Lane, Danvers, MA

Basement - 7'7" Ceilings

Approx. 417.8 sq. feet



Plans are illustrative only. Dimensions, square footages, elevations and details may vary from the floor plans provided