



Commercial Property Network, Inc.

29 Emmons Drive, Suite F-40, Princeton, NJ 08540

Ph: (609) 921-8844 Fax: (609) 924-9739

www.cpnrealestate.com

FOR LEASE: Free Standing Medical Office Building/3500/SF

Location: 2381 Route 206 @ corner of 295, Pennington/Lawrenceville & Denow Road

Total: Free standing building of approximately 3592 rsf

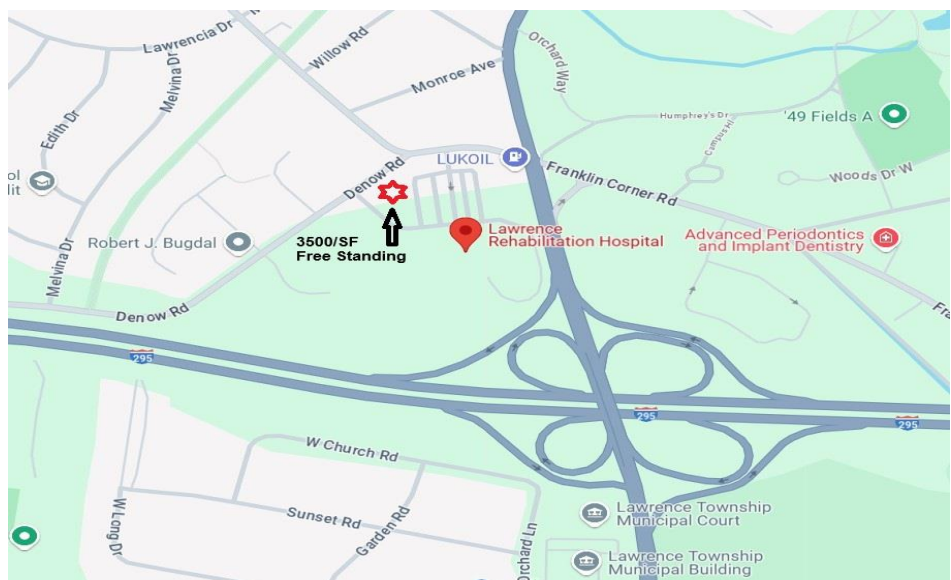
Uses: Ideal for all medical, day/senior care, rehab, outpatient, standard office, etc

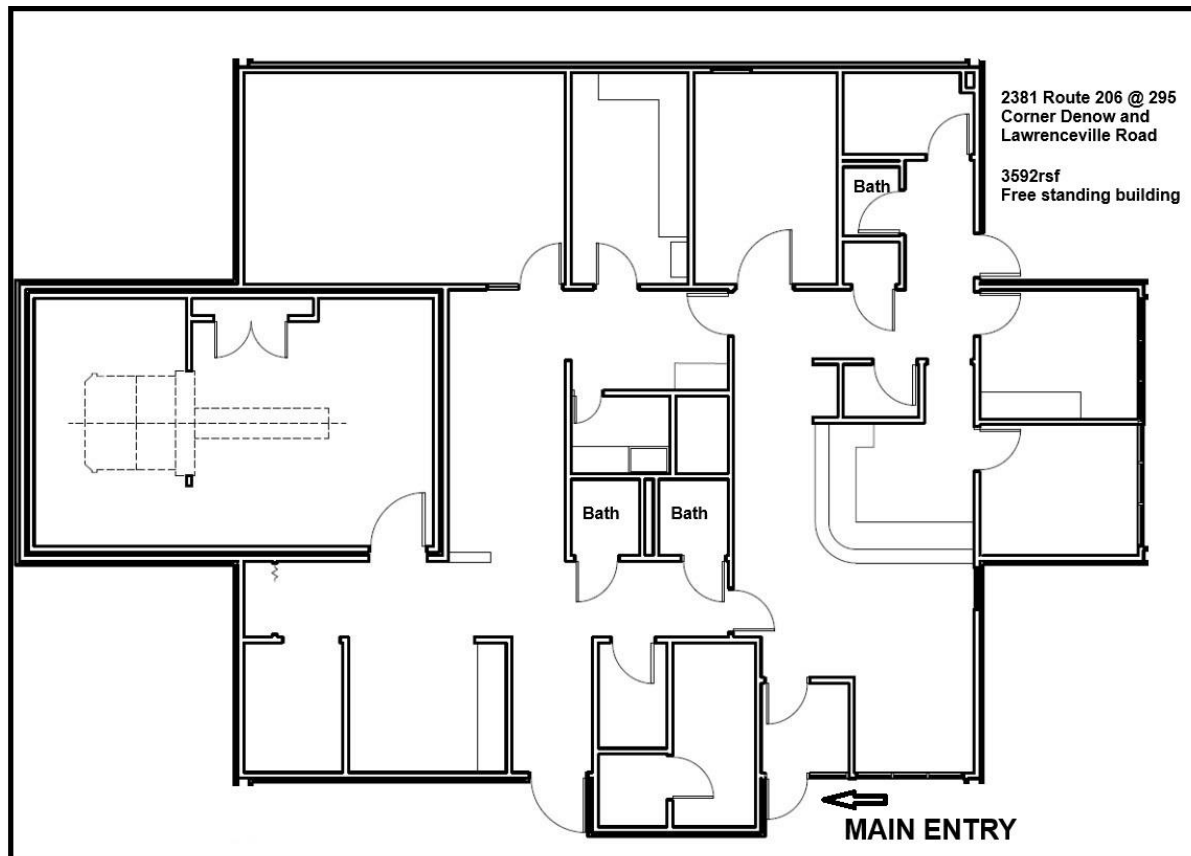
Utilities: Sewer, water, gas and electric, 2 panels, 100 & 225 amps, 600 Volts

Parking: 5+/1000, large lot directly adjacent to building

Status: Vacant, ready for fit out and renovations

Terms: Asking \$28.50/SF plus utilities - Seeking long term lease





Contact: William Barish, bbarish@cpnrealestate.com , 609-731-6076-
Broker/Founder

Paul Goldman, pgoldman@cpnrealestate.com 609-577-1084
Senior Director