

THE SHOPS AT LAKE SAN MARCOS

\$1.85 NNN

1030 LA BONITA DRIVE, SAN MARCOS, CA 92078

FOR LEASE | SUITES AVAILABLE FROM ± 1,604 SF TO ± 1,733 SF



For more information on this property, your current property, or your future location, please contact:

Kenneth Dubs, Jr.

CalBRE# 01277355 kdjr@dubsandcompany.com

1850 Diamond Street, Suite 103, San Marcos, California 92078 Office (760) 591-4100 Fax (760) 591-4102

CalBRE# 01385958

The information contained herein is deemed reliable, however no representations, warranties, or guaranties of any kind are made by Dubs and Company, Inc.

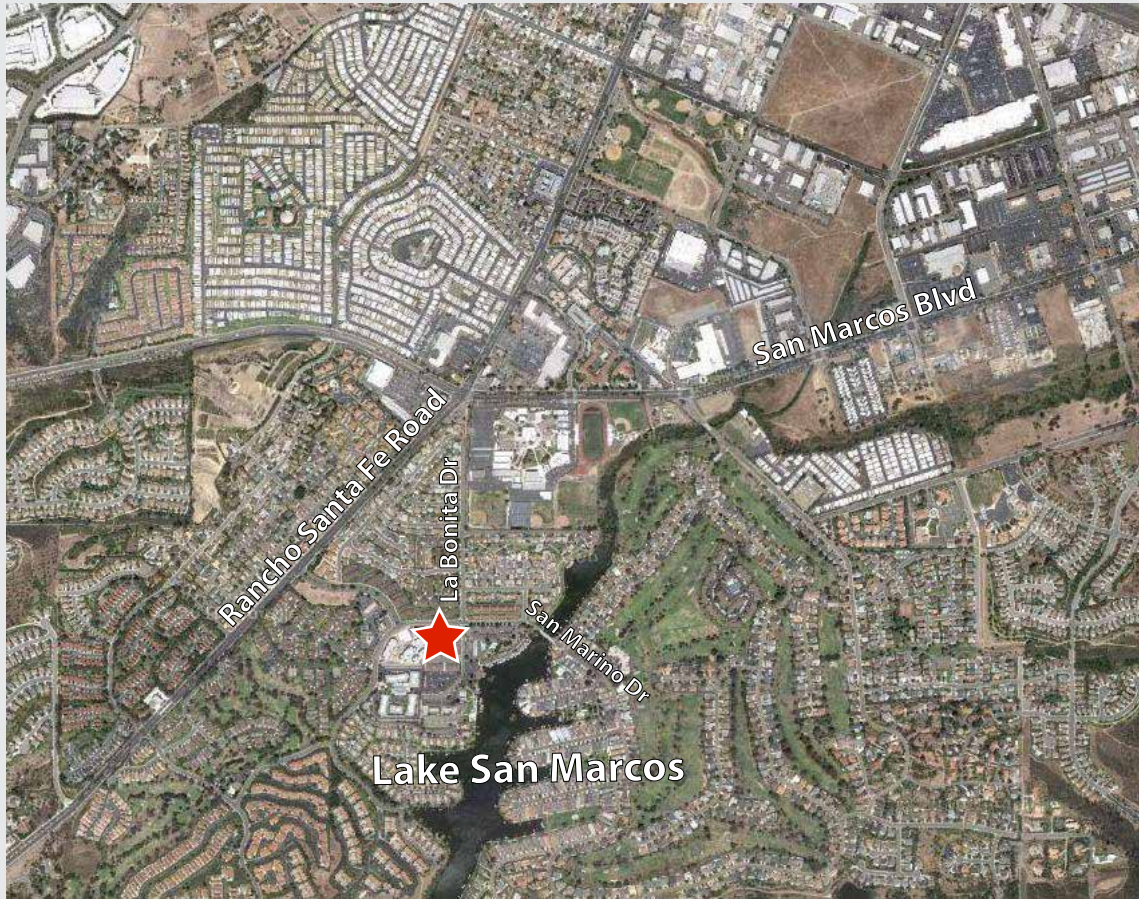


THE SHOPS AT LAKE SAN MARCOS

\$1.85 NNN

1030 LA BONITA DRIVE, SAN MARCOS, CA 92078

FOR LEASE | SUITES AVAILABLE FROM ± 1,604 SF TO ± 1,733 SF



- Ideal for retail & professional/medical offices
- Servicing the exclusive Lake San Marcos Community consisting of approximately 2,500 homes and condominiums
- 5.2/1,000 parking ratio
- Suites Available from ± 1,104 up to - 2,900 SF
- San Diego County Zone General Commercial (C-34)
- Adjacent to 150-unit, independent living condominium under construction

2014 Demographics	1 mile	3 miles	5 miles
POPULATION	13,014	86,477	195,646
AVG. HOUSEHOLD INCOME	\$44,834	\$60,521	\$68,272

For more information on this property, your current property, or your future location, please contact:

Kenneth Dubs, Jr.

CalBRE# 01277355 kdjr@dubsandcompany.com

1850 Diamond Street, Suite 103, San Marcos, California 92078

Office (760) 591-4100 Fax (760) 591-4102



THE SHOPS AT LAKE SAN MARCOS

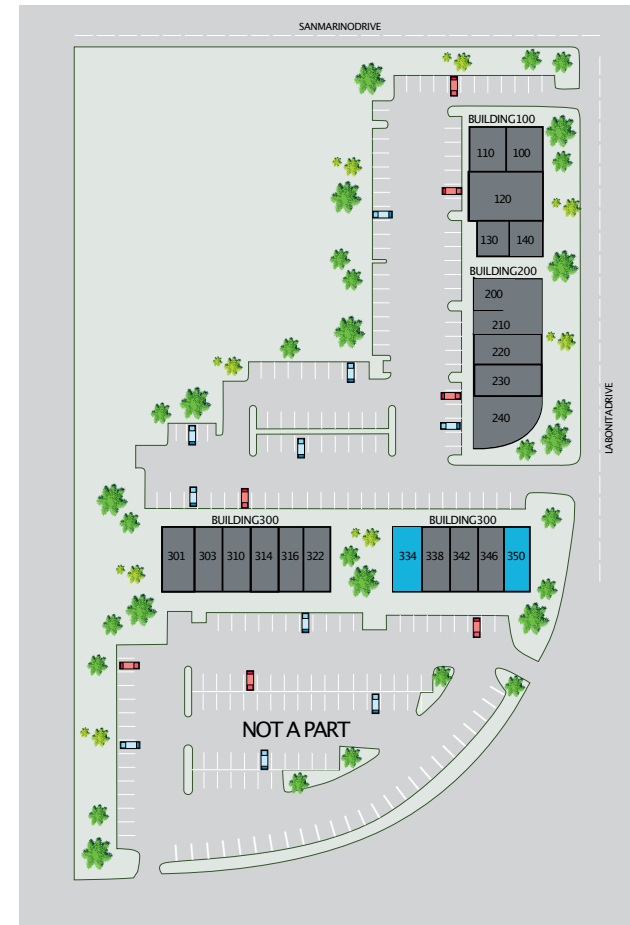
\$1.85 NNN

1030 LA BONITA DRIVE, SAN MARCOS, CA 92078

FOR LEASE | SUITES AVAILABLE FROM ± 1,604 SF TO ±1,733 SF

TENANT LIST - 1030 LA BONITA DRIVE

SUITE NO	TENANT	SQ. FT.
Building 100		
100	Pivot Charter School	932
110	Pivot Charter School	1,025
120	Pivot Charter School	1,535
130	Lake and Coast Realty	811
140	Pivot Charter School	1,089
Building 200		
200	D'liteful Chocolat	537
210	D'liteful Chocolat	1,287
220	Lake San Marcos Salon & Spa	1,447
230	North Coast Physical Therapy	1,473
240	North Coast Physical Therapy	1,427
Building 300		
301	Petrucelli Law Group	1,551
303	Dr. Emanuel Delagramaticas	1,115
310	Dr. Emanuel Delagramaticas	1,004
314	Holmes Law Group	1,104
316	Dr. Halim	1,139
322	Dr. Ted A. Wassel, DDS	1,682
Building 300		
334	Available	1,733
338	All Care In-Home	1,589
342	Lake San Marcos Association	757
346	Dr William J. Lolo	469
350	Available	1,604



For more information on this property, your current property, or your future location, please contact:

Kenneth Dubs, Jr.

CalBRE# 01277355 kdjr@dubsandcompany.com

1850 Diamond Street, Suite 103, San Marcos, California 92078

Office (760) 591-4100 Fax (760) 591-4102



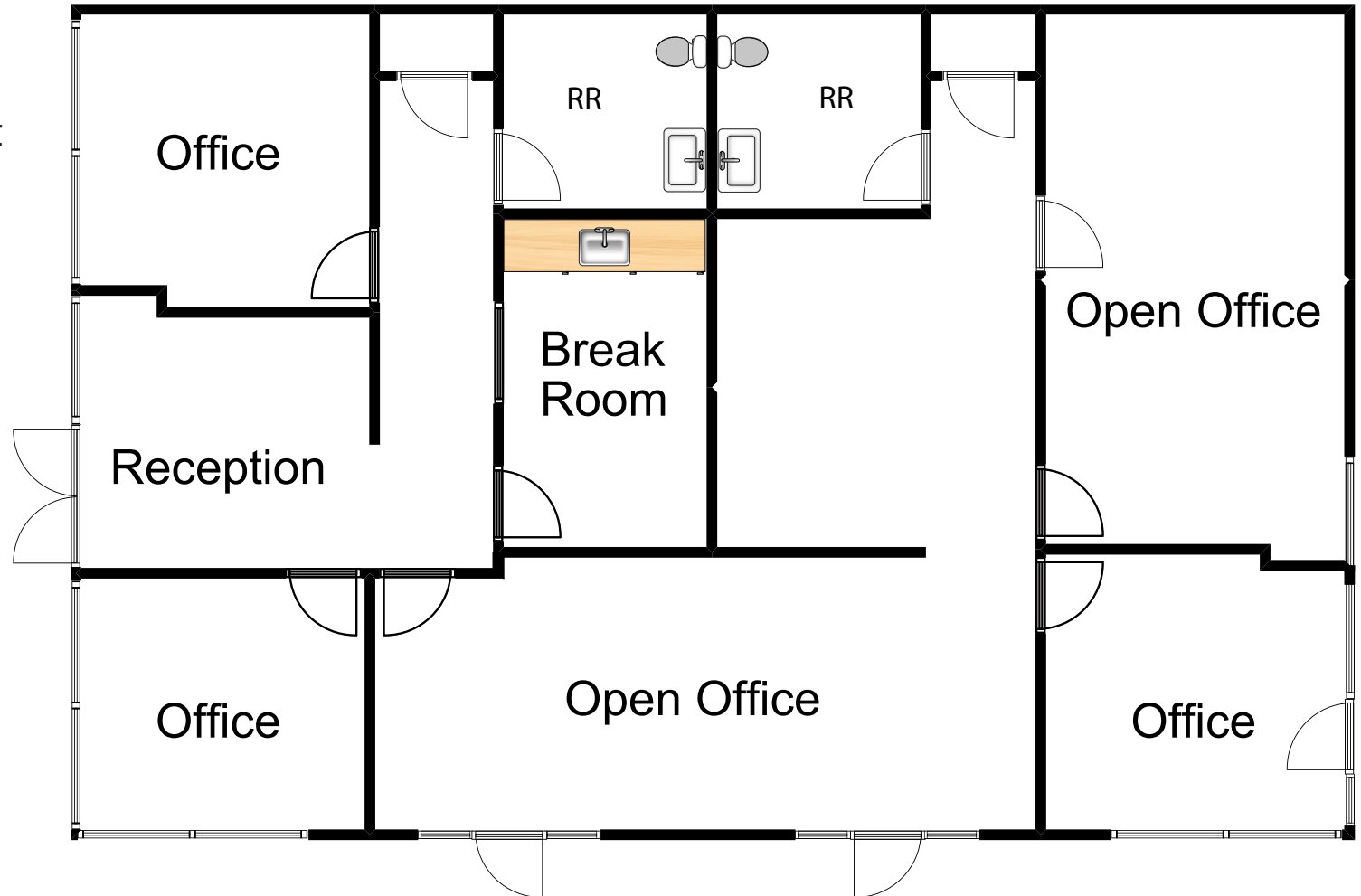
THE SHOPS AT LAKE SAN MARCOS

\$1.85 NNN

1030 LA BONITA DRIVE, SAN MARCOS, CA 92078

FOR LEASE | SUITES AVAILABLE FROM ± 1,604 SF TO ± 1,733 SF

Suite 334
1,733 Square Feet
Divisible



For more information on this property, your current property, or your future location, please contact:

Kenneth Dubs, Jr.

CalBRE# 01277355 kdjr@dubsandcompany.com

1850 Diamond Street, Suite 103, San Marcos, California 92078 Office (760) 591-4100 Fax (760) 591-4102

CalBRE# 01385958

The information contained herein is deemed reliable, however no representations, warranties, or guaranties of any kind are made by Dubs and Company, Inc.



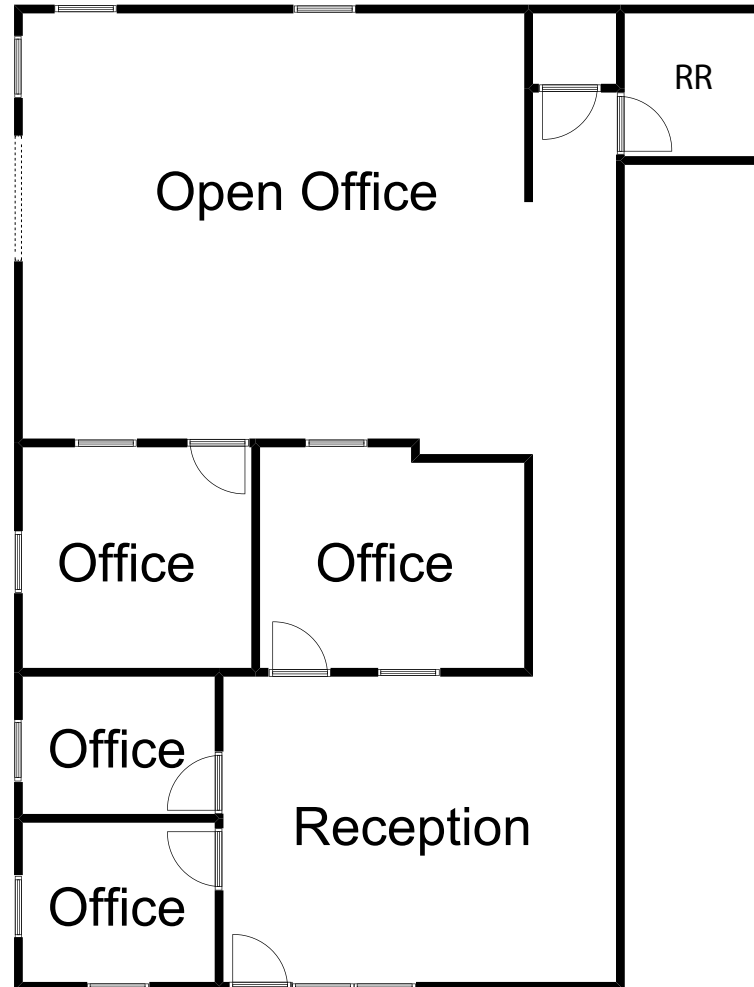
THE SHOPS AT LAKE SAN MARCOS

\$1.85 NNN

1030 LA BONITA DRIVE, SAN MARCOS, CA 92078

FOR LEASE | SUITES AVAILABLE FROM ± 1,604 SF TO ± 1,733 SF

Suite 350
1,604 Square Feet



For more information on this property, your current property, or your future location, please contact:

Kenneth Dubs, Jr.

CalBRE# 01277355 kdjr@dubsandcompany.com

1850 Diamond Street, Suite 103, San Marcos, California 92078 Office (760) 591-4100 Fax (760) 591-4102

CalBRE# 01385958

The information contained herein is deemed reliable, however no representations, warranties, or guaranties of any kind are made by Dubs and Company, Inc.

