



SmartEquity

Commercial Real Estate and Property Management

FOR LEASE **Turnkey Restaurant**

4220 Duncan Ave, St. Louis, MO 63110

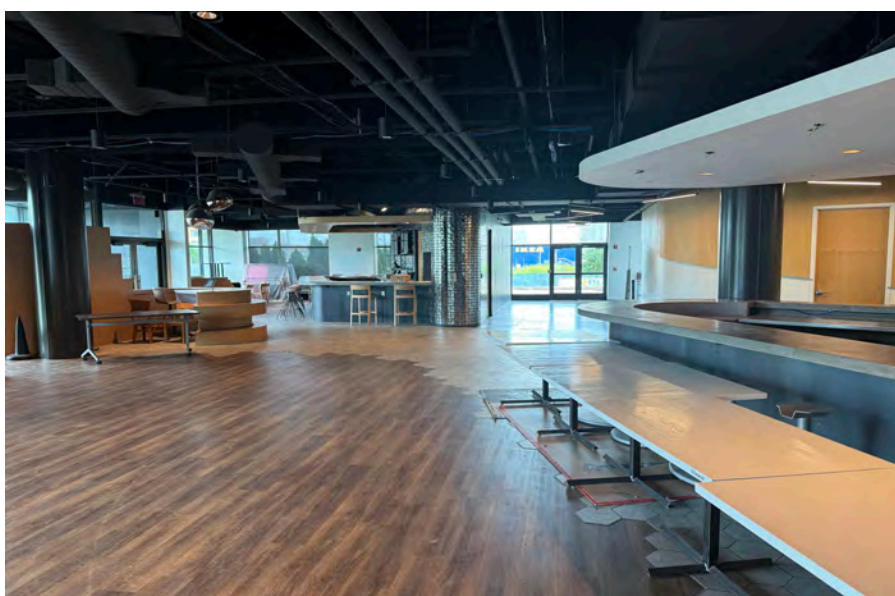
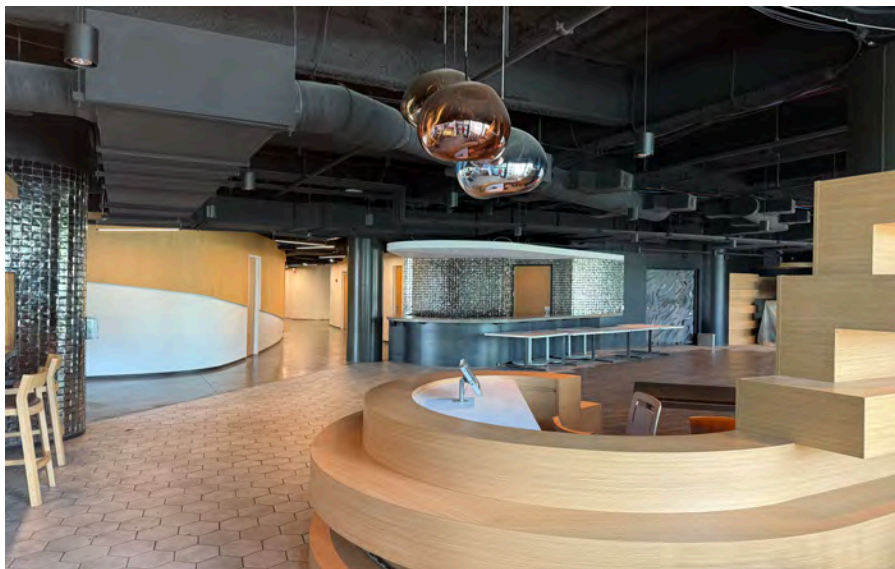
ED MAGLASANG | 314.254.0088 (O) 314-304-6320 (M) | Ed@bsmartequity.com

PAUL MABRY | 314.254.0088 (O) 314-973-3301 (M) | Paul@bsmartequity.com

BRANDON K. SMART, CCIM, SIOR | 314.254.0088 | Brandon@bsmartequity.com

No expressed or implied warranty or representation is made as to the accuracy of the information contained herein. This property is submitted subject to errors, omissions, change of price, withdrawal without notice, prior lease or sale and any other listing conditions imposed by the principals.

PROPERTY DETAILS



CLASS A RESTURANT

Type

URBAN

Location

182,068 SF

Building Size

90.1%

Leased

5

Stories

VERY WALKABLE (74)

Walk Score

5,263 SF

Available SF

2,126 SF

Available Patio SF

394 SF

Available Cafe

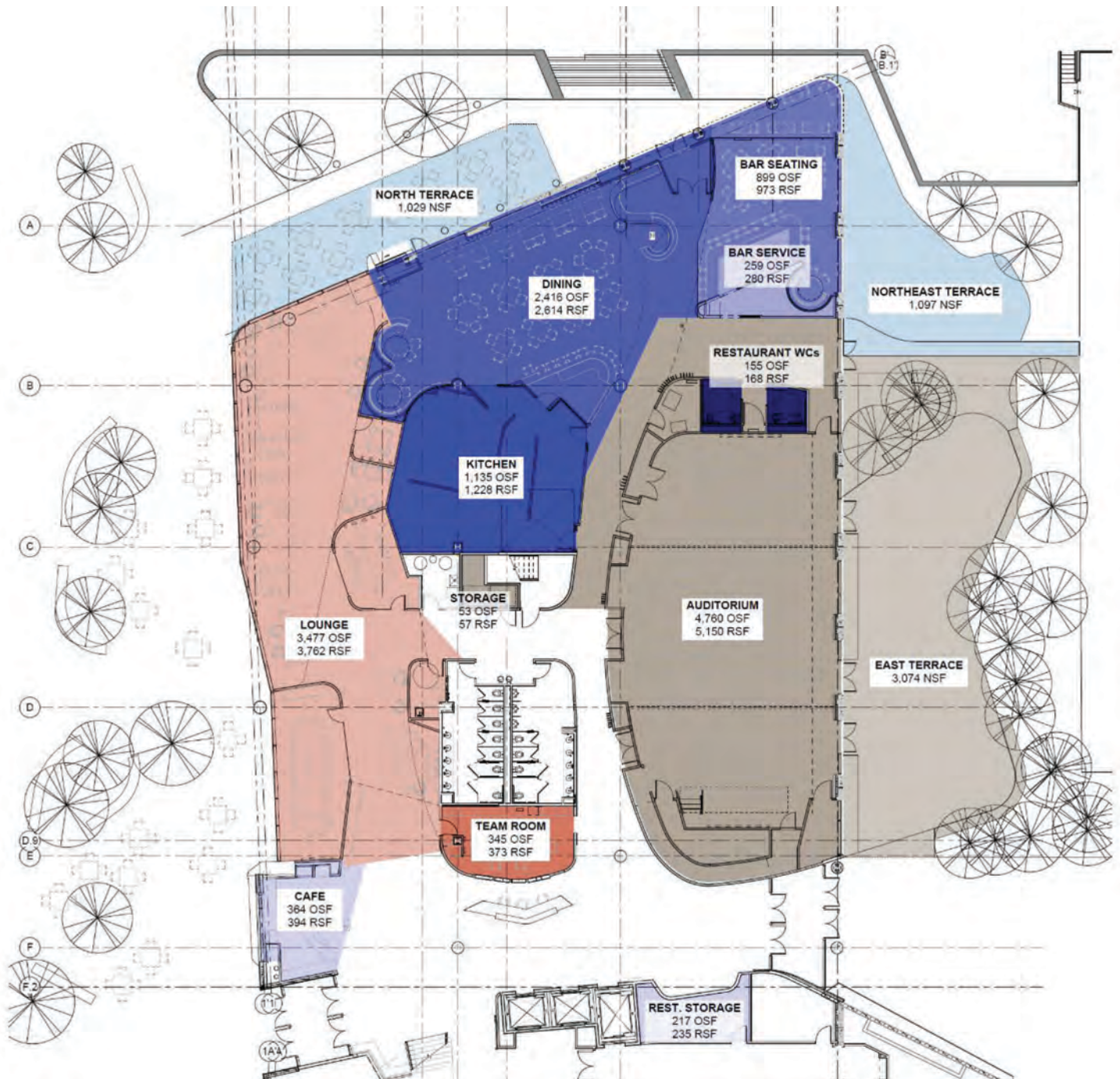
Microsoft Corporation, The Boeing Company, Cambridge Innovation Center (CIC), Aon, Move by BJC, Accenture

Tenants

Negotiable

Base Rent

FLOOR PLAN



MAP



4220 Duncan Ave, St. Louis, MO 63110 | **FOR LEASE**