



2200 ATLANTIC ST.



LIVE, WORK & PLAY

Building and Land Technology strives to create vibrant and thriving communities for our partners. As a vertically integrated developer with an entrepreneurial spirit, BLT enhances and connects your experiences as you live, work, and play within our communities.

For more information :

Leslie Whatley

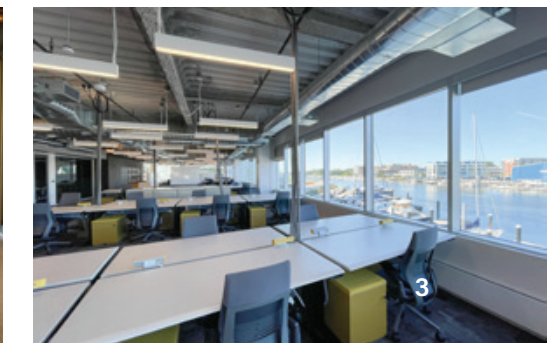
Executive Vice President

203 644 1577

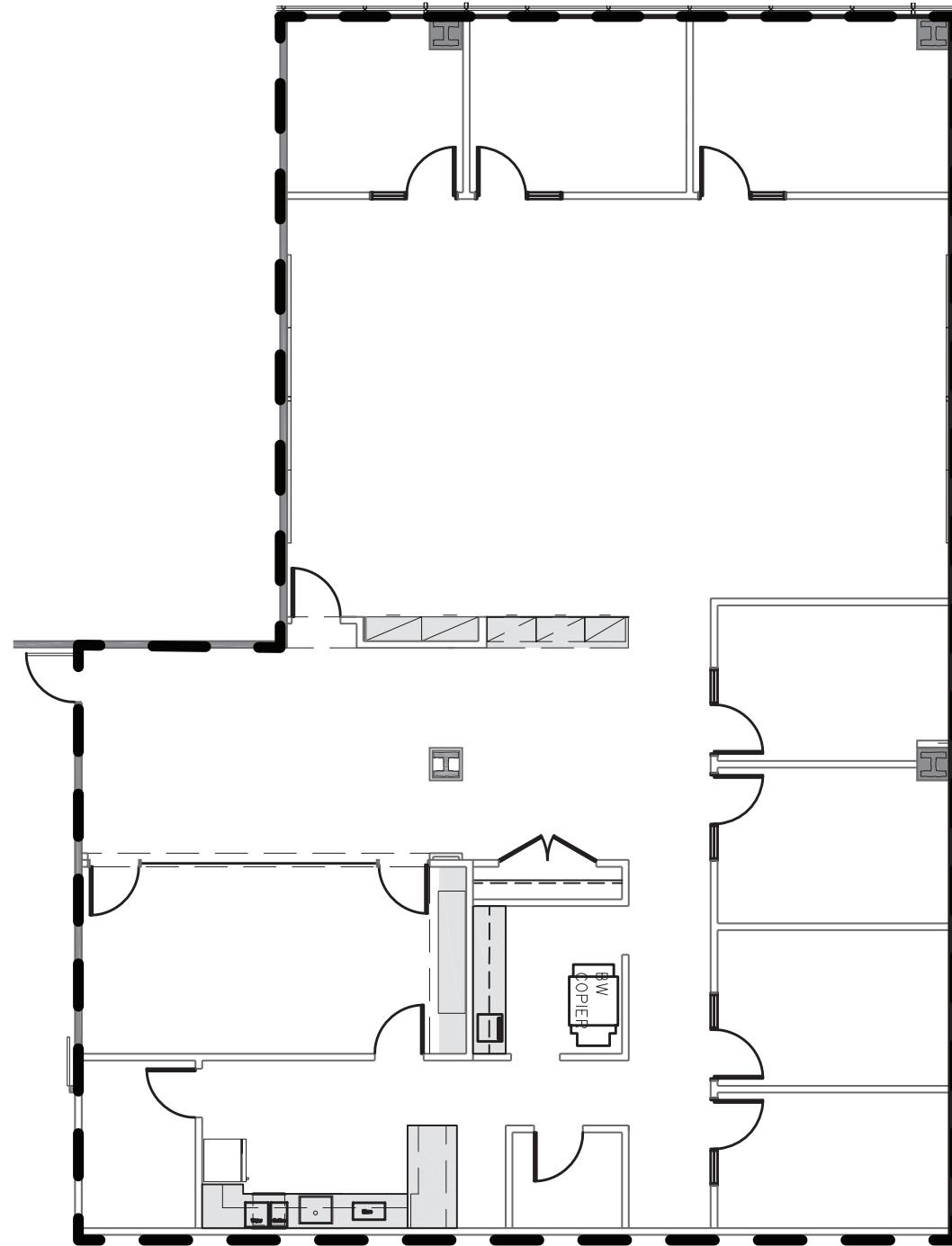
lwhatley@bltooffice.com

PRIME COMMERCIAL SPACE AVAILABLE

- Water views
- Office suites range from 4,953 to 10,531^{RSF}
- Complimentary Shuttle to the Stamford Train Station
- Turnkey spaces
- State-of-the-art fitness facility
- Full-service cafeteria
- Walking distance to retail, restaurant and more
- Security on site
- Convenient access to public transportation
- Live-Work-Play at Harbor Point community
- Trolley connects to downtown



2200 ATLANTIC ST.



5TH FLOOR 4,953_{RSF}



YOUR DYNAMIC WATERFRONT COMMUNITY

You will find a cosmopolitan flair to the city combined with a laid-back waterfront lifestyle. Comprised of over 200+ events annually, access to free trolleys, water taxis, nearby parks, marinas, award-winning new restaurants, events, and all the boardwalk action!

All this with easy access by free trolley and within minutes to the Train Station. [View Trolley Schedule.](#)

SEE HARBOR POINT IN ACTION!



2200 ATLANTIC ST.

LESS THAN 45 MINUTES TO
NYC
NEW HAVEN
MTA Metro-North Railroad
Stamford

Charter
COMMUNICATIONS

10 MINUTE WALK
TO STAMFORD
TRAIN STATION

- SIGN WHALE
- Bareburger
- Fortina
- ELEVATE FITNESS
- MEXICUE
- STAMFORD HEALTH
- Spiral
- HBAR SALON
- PINOT'S PALETTE
- William Pitt Julia B Fee
- Sotheby's INTERNATIONAL REALTY
- Harbor Point WINES & SPIRITS
- PATISSERIE SALZBURG
- HARBOR POINT ORGANIC MARKET
- CORBOS DELI
- qoqreen



F45
CUGINE'S ITALIAN

CISCO BREWERS
THE VILLAGE
Cornell University
Veterinary Specialists

CVS
pharmacy

T'S WINE
BAR + KITCHEN

THIRD PLACE

PROOF
COFFEE
ROASTERS.

FUTURE
DEVELOPMENT

HARBOR POINT
DOG PARK

NV@
HARBOR POINT

Commons
Park

ALLURE

XENHOUSE

W

REVOLUTION
TRAINING

TEQUILA ESCAPE
KITCHEN + BAR

HINCKLEY

HARBOR POINT
SQUARE
BEACON
HARBOR POINT



HARBOR POINT
WATER TAXI

ESCAPE

ANTHEM

HAUTE HEALING

HARBOR PETS

WORKSPACE
STAGE
Building and Land Technology

THE MARINAS
AT HARBOR POINT

HARBOR LANDING
BOARDWALK

HARBOR POINT
BOARDWALK

opus.

KOSCIUSZKO
PARK

PRIME
AN AMERICAN KITCHEN & BAR

TRIANGLE
PARK

FUTURE
DEVELOPMENT

FUTURE HARBOR POINT
BOARDWALK

SoundWaters
Promoting Long Island Sound Strength Education

Long Island Sound

FIND YOURSELF AT HOME & LIVE STEPS AWAY FROM WHERE YOU WORK!

Opus, Anthem, Allure, Beacon, Escape, and NV Apartments offer Studio, 1, 2, 3, and 4 Bedroom apartments, flexible lease terms with furnished or non-furnished options, all complemented by resort-style amenities and ample outdoor space.

For more information :

203.961.5000

Leasing@BLTLiveWorkPlay.com

Visit [BLTLiveWorkPlay.com](https://www.BLTLiveWorkPlay.com) for availability





PREFERRED EMPLOYER PROGRAM

As a partner in the Preferred Employer Program, your employees can take advantage of exclusive perks, including discounts throughout Harbor Point. For more information, please contact our corporate leasing representative below.

For more information :
203.961.5000
Leasing@BLTLiveWorkPlay.com

Visit [BLTLiveWorkPlay.com](https://www.bltlive.com) for more information.

CORPORATE REBATE PROGRAM

Your home at every stage! With a partnership between BLT and William Pitt-Julia B. Fee Sotheby's International Realty, you always find your home with us. For more information, please contact our corporate leasing representative below.

For more information :

Jane McWilliams

VP Business Development & Relocation
973.650.2445
jmcwilliams@williampitt.com

For more information visit: [williampitt.com/fairfield](https://www.williampitt.com/fairfield)



BLT LiveWorkPlay

Please direct all inquiries to

Leslie Whatley
Executive Vice President

203 644 1577
lwhatley@bltoffice.com

Drew Steinberg
Leasing Manager

203 355 6057
dsteinberg@bltoffice.com