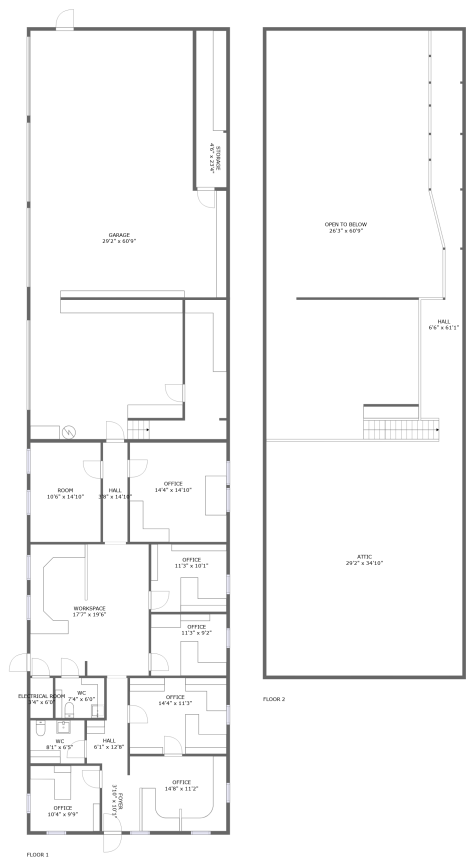


Home report

2950 Industrial Park Drive, Cedarhurst, Finksburg, Carroll County, Maryland, United States, 21048, C




Total Area: 1298 sq. ft

Floor 1: 1298 sq. ft, Floor 2: 0 sq. ft

Excluded: Room 155 sq. ft, Electrical room 20 sq. ft, Office 213 sq. ft, Garage 1636 sq. ft, Storage 105 sq. ft, Open to below 1421 sq. ft, Attic 1016 sq. ft, Hall 370 sq. ft, Walls: 320 sq. ft

Property summary

 **2** Floors

 **2** Half baths

 **1** Garages

2950 Industrial Park Drive, Cedarhurst, Finksburg, Carroll County, Maryland, United States, 21048, C



Room dimensions

Floor 1 Total:1298sqft   Excluded: 2129sqft

#		Max Dimensions	sqft	Included
1	Office	10'4" x 9'9"	101 sq. ft	Yes
2	Office	14'4" x 11'3"	163 sq. ft	Yes
3	Office	11'3" x 9'2"	103 sq. ft	Yes
4	Office	14'4" x 14'10"	213 sq. ft	No
5	Electrical Room	3'4" x 6'0"	20 sq. ft	No
6	Garage	29'2" x 60'9"	1636 sq. ft	No
7	Storage	4'6" x 23'4"	105 sq. ft	No
8	Office	14'8" x 11'2"	163 sq. ft	Yes
9	Foyer	3'10" x 10'1"	38 sq. ft	Yes
10	Room	10'6" x 14'10"	155 sq. ft	No
11	Workspace	17'7" x 19'6"	344 sq. ft	Yes

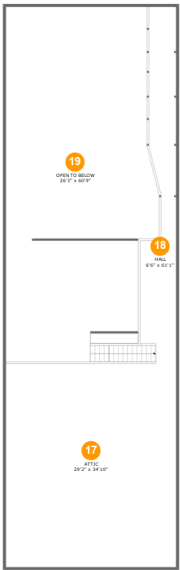
## Home report

**2950 Industrial Park Drive, Cedarhurst, Finksburg, Carroll  
County, Maryland, United States, 21048, C**

#		Max Dimensions	sqft	Included
12	Office	11'3" x 10'1"	113 sq. ft	Yes
13	Hall	3'8" x 14'10"	54 sq. ft	Yes
14	WC	8'1" x 6'5"	52 sq. ft	Yes
15	Hall	6'1" x 12'8"	59 sq. ft	Yes
16	WC	7'4" x 6'0"	44 sq. ft	Yes

Home report

2950 Industrial Park Drive, Cedarhurst, Finksburg, Carroll  
County, Maryland, United States, 21048, C



Room dimensions

Floor 2 Total:0sqft   Excluded: 2807sqft

#		Max Dimensions	sqft	Included
17	Attic	29'2" x 34'10"	1016 sq. ft	No
18	Hall	6'6" x 61'1"	370 sq. ft	No
19	Open To Below	26'3" x 60'9"	1412 sq. ft	No

2950 Industrial Park Drive, Cedarhurst, Finksburg, Carroll  
County, Maryland, United States, 21048, C

1 Floor 1 - Office



Max Dimensions: 10'4" x 9'9"  
Calculated Area: 101 sq. ft  
Included: Yes

Heated: Yes  
Finished: Yes  
Enclosed: Yes  
Contiguous: Yes  
Permitted: Yes  
Wet space: No  
Addition: No  
Conversion: No

2 Floor 1 - Office



Max Dimensions: 14'4" x 11'3"  
Calculated Area: 163 sq. ft  
Included: Yes

Heated: Yes  
Finished: Yes  
Enclosed: Yes  
Contiguous: Yes  
Permitted: Yes  
Wet space: No  
Addition: No  
Conversion: No

2950 Industrial Park Drive, Cedarhurst, Finksburg, Carroll  
County, Maryland, United States, 21048, C

3 Floor 1 - Office



Max Dimensions: 11'3" x 9'2"  
Calculated Area: 103 sq. ft  
Included: Yes

Heated: Yes  
Finished: Yes  
Enclosed: Yes  
Contiguous: Yes  
Permitted: Yes  
Wet space: No  
Addition: No  
Conversion: No

4 Floor 1 - Office



Max Dimensions: 14'4" x 14'10"  
Calculated Area: 213 sq. ft  
Included: No

Heated: Yes  
Finished: No  
Enclosed: Yes  
Contiguous: Yes  
Permitted: Yes  
Wet space: No  
Addition: No  
Conversion: No

5 Floor 1 - Electrical Room



Max Dimensions: 3'4" x 6'0"  
Calculated Area: 20 sq. ft  
Included: No

Heated: No  
Finished: No  
Enclosed: Yes  
Contiguous: Yes  
Permitted: Yes  
Wet space: No  
Addition: No  
Conversion: No

2950 Industrial Park Drive, Cedarhurst, Finksburg, Carroll  
County, Maryland, United States, 21048, C

6 Floor 1 - Garage



Max Dimensions: 29'2" x 60'9"  
Calculated Area: 1636 sq. ft  
Included: No

Heated: No  
Finished: No  
Enclosed: Yes  
Contiguous: Yes  
Permitted: Yes  
Wet space: No  
Addition: No  
Conversion: No

7 Floor 1 - Storage



Max Dimensions: 4'6" x 23'4"  
Calculated Area: 105 sq. ft  
Included: No

Heated: No  
Finished: No  
Enclosed: No  
Contiguous: Yes  
Permitted: Yes  
Wet space: No  
Addition: No  
Conversion: No

8 Floor 1 - Office



Max Dimensions: 14'8" x 11'2"  
Calculated Area: 163 sq. ft  
Included: Yes

Heated: Yes  
Finished: Yes  
Enclosed: Yes  
Contiguous: Yes  
Permitted: Yes  
Wet space: No  
Addition: No  
Conversion: No

2950 Industrial Park Drive, Cedarhurst, Finksburg, Carroll  
County, Maryland, United States, 21048, C

9 Floor 1 - Foyer



Max Dimensions: 3'10" x 10'1"  
Calculated Area: 38 sq. ft  
Included: Yes

Heated: Yes  
Finished: Yes  
Enclosed: Yes  
Contiguous: Yes  
Permitted: Yes  
Wet space: No  
Addition: No  
Conversion: No

10 Floor 1 - Room



Max Dimensions: 10'6" x 14'10"  
Calculated Area: 155 sq. ft  
Included: No

Heated: Yes  
Finished: No  
Enclosed: Yes  
Contiguous: Yes  
Permitted: Yes  
Wet space: No  
Addition: No  
Conversion: No

11 Floor 1 - Workspace



Max Dimensions: 17'7" x 19'6"  
Calculated Area: 344 sq. ft  
Included: Yes

Heated: Yes  
Finished: Yes  
Enclosed: Yes  
Contiguous: Yes  
Permitted: Yes  
Wet space: No  
Addition: No  
Conversion: No



12 Floor 1 - Office



Max Dimensions: 11'3" x 10'1"  
Calculated Area: 113 sq. ft  
Included: Yes

Heated: Yes  
Finished: Yes  
Enclosed: Yes  
Contiguous: Yes  
Permitted: Yes  
Wet space: No  
Addition: No  
Conversion: No

13 Floor 1 - Hall



Max Dimensions: 3'8" x 14'10"  
Calculated Area: 54 sq. ft  
Included: Yes

Heated: Yes  
Finished: Yes  
Enclosed: Yes  
Contiguous: Yes  
Permitted: Yes  
Wet space: No  
Addition: No  
Conversion: No

14 Floor 1 - WC



Max Dimensions: 8'1" x 6'5"  
Calculated Area: 52 sq. ft  
Included: Yes

Heated: Yes  
Finished: Yes  
Enclosed: Yes  
Contiguous: Yes  
Permitted: Yes  
Wet space: Yes  
Addition: No  
Conversion: No

2950 Industrial Park Drive, Cedarhurst, Finksburg, Carroll  
County, Maryland, United States, 21048, C

15 Floor 1 - Hall



Max Dimensions: 6'1" x 12'8"  
Calculated Area: 59 sq. ft  
Included: Yes

Heated: Yes  
Finished: Yes  
Enclosed: Yes  
Contiguous: Yes  
Permitted: Yes  
Wet space: No  
Addition: No  
Conversion: No

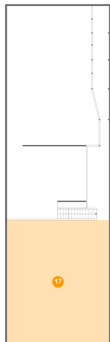
16 Floor 1 - WC



Max Dimensions: 7'4" x 6'0"  
Calculated Area: 44 sq. ft  
Included: Yes

Heated: Yes  
Finished: Yes  
Enclosed: Yes  
Contiguous: Yes  
Permitted: Yes  
Wet space: Yes  
Addition: No  
Conversion: No

17 Floor 2 - Attic

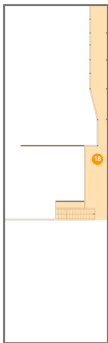


Max Dimensions: 29'2" x 34'10"  
Calculated Area: 1016 sq. ft  
Included: No

Heated: No  
Finished: No  
Enclosed: Yes  
Contiguous: Yes  
Permitted: Yes  
Wet space: No  
Addition: No  
Conversion: No

2950 Industrial Park Drive, Cedarhurst, Finksburg, Carroll  
County, Maryland, United States, 21048, C

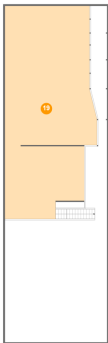
18 Floor 2 - Hall



Max Dimensions: 6'6" x 61'1"  
Calculated Area: 370 sq. ft  
Included: No

Heated: Yes  
Finished: No  
Enclosed: Yes  
Contiguous: Yes  
Permitted: Yes  
Wet space: No  
Addition: No  
Conversion: No

19 Floor 2 - Open To Below



Max Dimensions: 26'3" x 60'9"  
Calculated Area: 1412 sq. ft  
Included: No

Heated: No  
Finished: No  
Enclosed: No  
Contiguous: Yes  
Permitted: No  
Wet space: No  
Addition: No  
Conversion: No