

FOR LEASE

AMPLE PARKING

Medical Office

267 Medical Park Blvd | Petersburg, VA 23805



COMMONWEALTH
COMMERCIAL
Comprehensive Property Solutions



PROPERTY HIGHLIGHTS

- › 1,500± SF medical office with private suite entrance
- › Three exam rooms, one office, restroom, and storage/filing closet
- › Medical grade finishes
- › Ample parking
- › Building signage available
- › Easy access to Interstate-95 and Southside Regional Medical Center
- › On-site ownership
- › Tenant improvements available

DEMOGRAPHICS	1 MILE	3 MILE	5 MILE
POPULATION	3,690	21,208	61,437
AVERAGE HH INCOME	\$79,524	\$81,168	\$77,683
DAYTIME EMPLOYEES	4,137	8,710	28,629

FOR MORE INFORMATION:

ROBBIE BERNDT

Senior Associate

804-968-1151

rberndt@commonwealthcommercial.com

ERIC HAMMOND

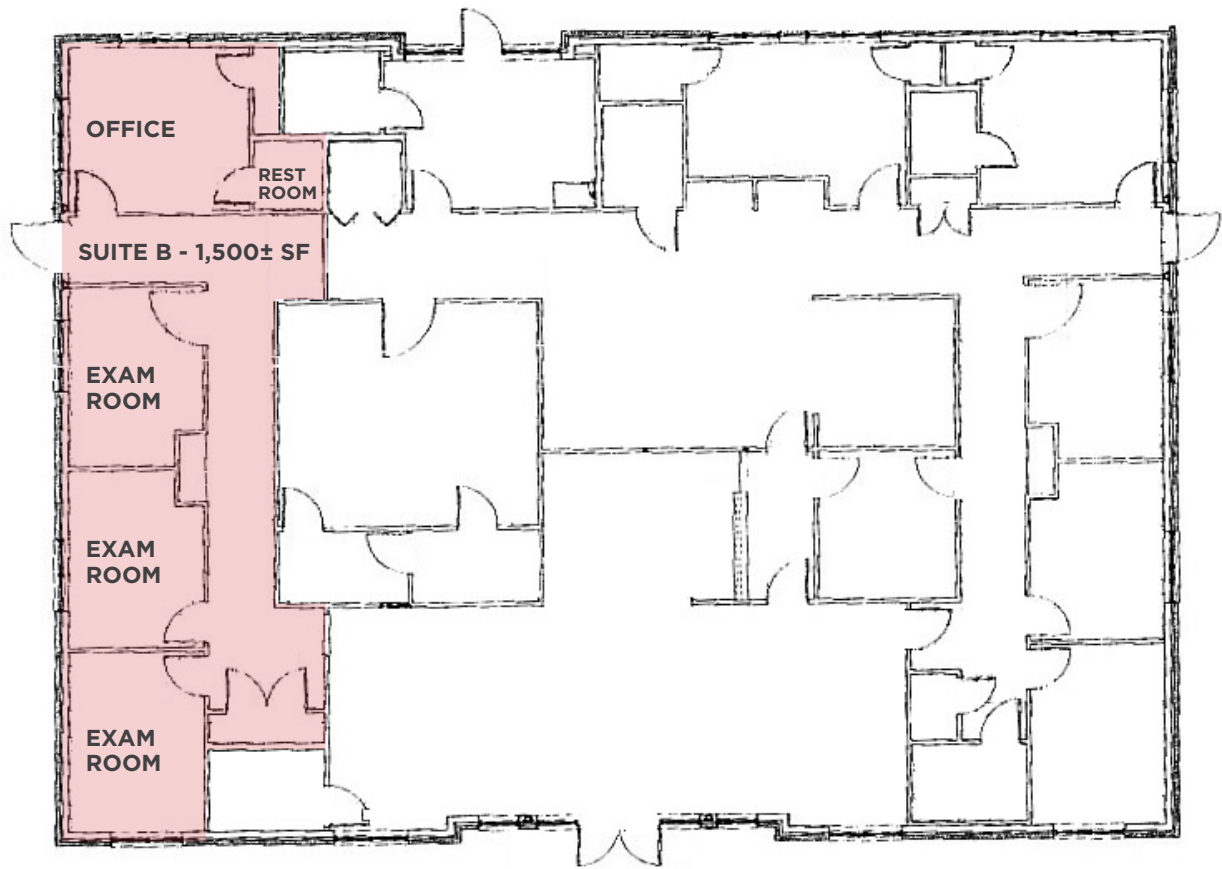
Senior Vice President

804-793-0049

ehammond@commonwealthcommercial.com

Commonwealth Commercial Partners, LLC represents the Landlord of this property. Information contained herein is deemed reliable but is not guaranteed.

FLOOR PLAN



FOR LEASE | 267 MEDICAL PARK BLVD | PETERSBURG, VA 23805