

Nearly 6,000 SF Medical/Office with I-77 Access & Visibility



570 White Pond Dr.
Akron, Ohio

Property Features

- Available for lease: 5,660 SF
Suite 200: 5,660 SF
- Office or medical use
- Property campus has restaurant on site
- Freeway access & visibility
- Strategically located seconds from I-77 & I-76, minutes from I-71 & I-271



Stacy Tramonte

330 590 8248 • STramonte@pvccinc.com

Barbara Faciana

330 590 8230 • BFaciana@pvccinc.com

NO WARRANTY OR REPRESENTATION, EXPRESS OR IMPLIED, IS MADE AS TO THE ACCURACY OF THE INFORMATION CONTAINED HEREIN, AND THE SAME IS SUBMITTED SUBJECT TO ERRORS, OMISSIONS, CHANGE OF PRICE, RENTAL OR OTHER CONDITIONS, PRIOR SALE, LEASE OR FINANCING, OR WITHDRAWAL WITHOUT NOTICE, AND OF ANY SPECIAL LISTING CONDITIONS IMPOSED BY OUR PRINCIPALS NO WARRANTIES OR REPRESENTATIONS ARE MADE AS TO THE CONDITION OF THE PROPERTY OR ANY HAZARDS CONTAINED THEREIN ARE ANY TO BE IMPLIED.

6060 Rockside Woods Blvd., Suite 402
Independence, Ohio 44131
216 831 3310

naipvc.com

570 White Pond Dr.
Akron, OH 44320

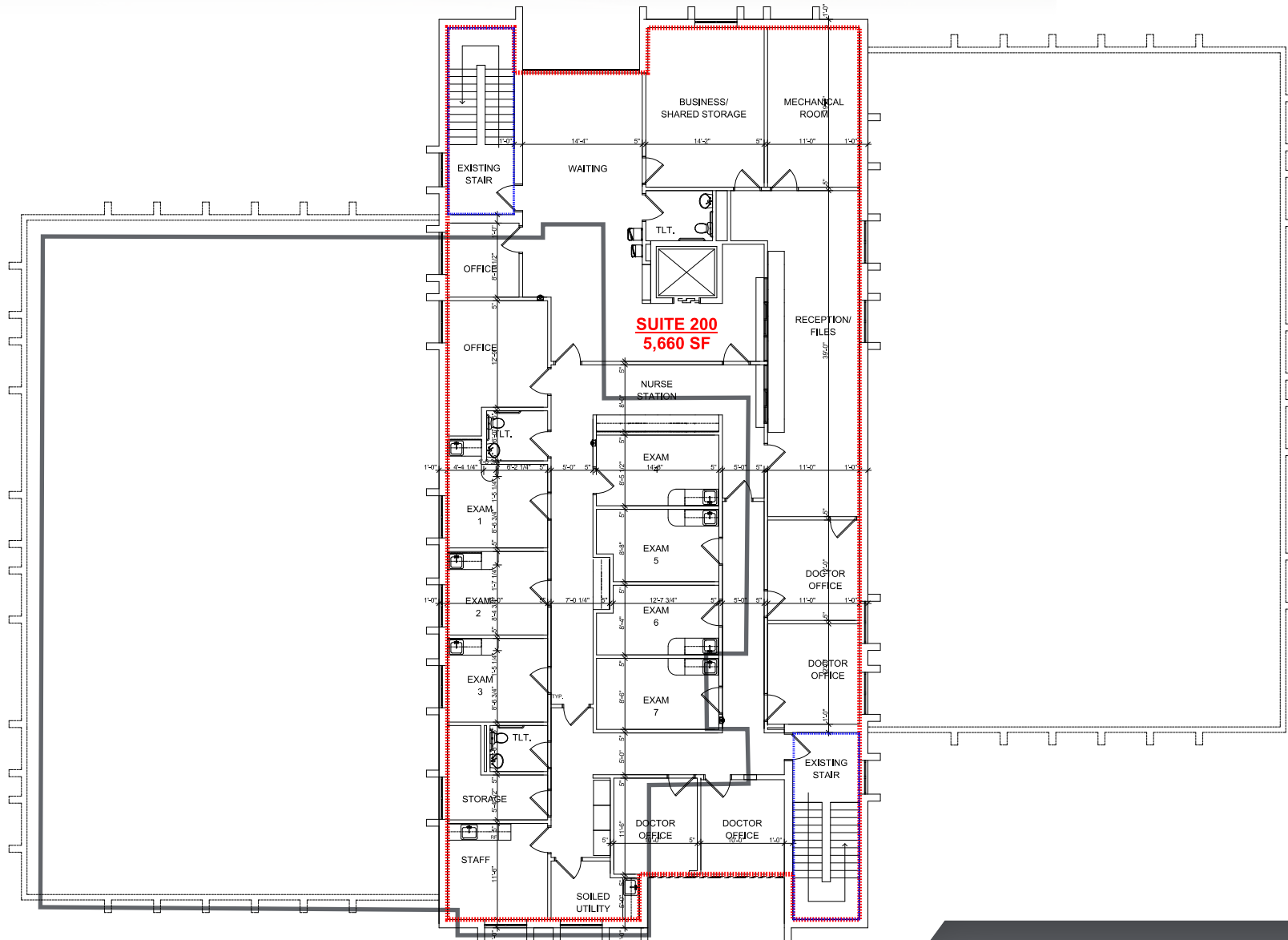
PHOTOS

Suite 200



570 White Pond Dr.
Akron, OH 44320

FLOOR PLAN

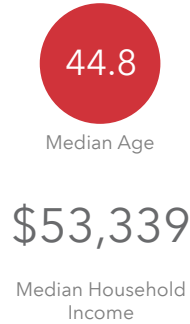
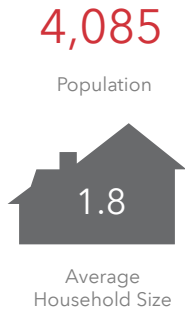


570 White Pond Dr.
Akron, OH 44320

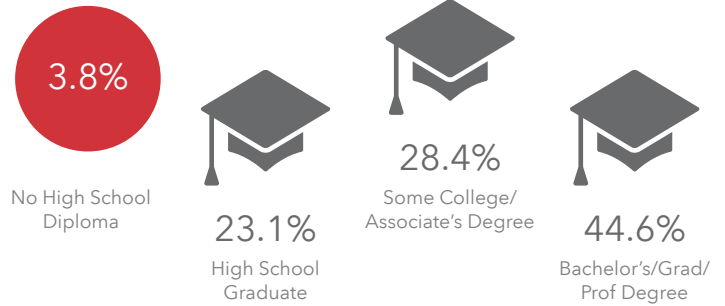
LOCATION



KEY FACTS



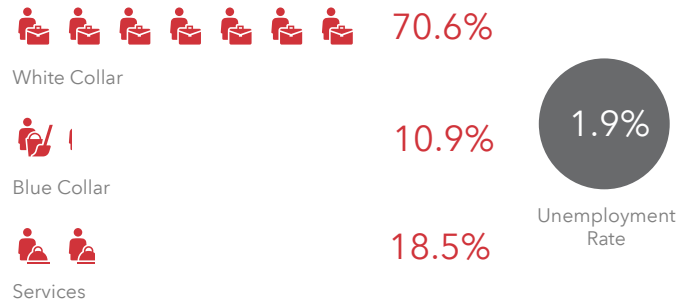
EDUCATION



BUSINESS



EMPLOYMENT



INCOME



2025 Households by income (Esri)

The largest group: \$35,000 - \$49,999 (14.4%)

The smallest group: \$150,000 - \$199,999 (4.5%)

Indicator ▲	Value	Diff	
<\$15,000	13.9%	+5.7%	
\$15,000 - \$24,999	13.8%	+7.2%	
\$25,000 - \$34,999	6.2%	-2.2%	
\$35,000 - \$49,999	14.4%	+3.3%	
\$50,000 - \$74,999	11.7%	-5.4%	
\$75,000 - \$99,999	12.2%	+1.4%	
\$100,000 - \$149,999	10.3%	-6.6%	
\$150,000 - \$199,999	4.5%	-4.1%	
\$200,000+	13.0%	+0.7%	

Bars show deviation from Summit County

Stacy Tramonte
330 590 8248 • STRamonte@pvccinc.com

Barbara Faciana
330 590 8230 • BFaciana@pvccinc.com

570 White Pond Dr.
Akron, OH 44320

3 MILE DEMOGRAPHICS

KEY FACTS

63,179

Population



2.1

Average Household Size

43.0

Median Age

\$64,829

Median Household Income

EDUCATION

5.0%

No High School Diploma



25.6%

High School Graduate



28.4%

Some College/ Associate's Degree



40.9%

Bachelor's/Grad/ Prof Degree

BUSINESS



2,241

Total Businesses



25,656

Total Employees

EMPLOYMENT



65.4%

White Collar



16.4%

Blue Collar



18.1%

Services



4.0%

Unemployment Rate

INCOME



\$64,829

Median Household Income



\$44,755

Per Capita Income



\$153,882

Median Net Worth

2025 Households by income (Esri)

The largest group: \$50,000 - \$74,999 (16.2%)

The smallest group: \$150,000 - \$199,999 (7.1%)

Indicator ▲	Value	Diff
<\$15,000	12.3%	+4.1%
\$15,000 - \$24,999	8.2%	+1.6%
\$25,000 - \$34,999	9.2%	+0.8%
\$35,000 - \$49,999	10.3%	-0.8%
\$50,000 - \$74,999	16.2%	-0.9%
\$75,000 - \$99,999	11.0%	+0.2%
\$100,000 - \$149,999	15.8%	-1.1%
\$150,000 - \$199,999	7.1%	-1.5%
\$200,000+	10.0%	-2.3%

Bars show deviation from Summit County

Stacy Tramonte

330 590 8248 • STRamonte@pvccinc.com

Barbara Faciana

330 590 8230 • BFaciana@pvccinc.com

KEY FACTS

150,619

Population



2.2

Average Household Size

39.7

Median Age

\$59,683

Median Household Income

EDUCATION

7.9%

No High School Diploma



27.8%

High School Graduate



28.1%

Some College/ Associate's Degree



36.2%

Bachelor's/Grad/ Prof Degree

BUSINESS



6,661

Total Businesses



107,800

Total Employees

EMPLOYMENT



60.3%

White Collar



19.8%

Blue Collar



19.9%

Services



5.2%

Unemployment Rate

INCOME



\$59,683

Median Household Income



\$40,879

Per Capita Income



\$109,307

Median Net Worth

2025 Households by income (Esri)

The largest group: \$50,000 - \$74,999 (16.6%)

The smallest group: \$150,000 - \$199,999 (6.5%)

Indicator ▲	Value	Diff	
<\$15,000	12.5%	+4.3%	
\$15,000 - \$24,999	8.1%	+1.5%	
\$25,000 - \$34,999	10.0%	+1.6%	
\$35,000 - \$49,999	12.5%	+1.4%	
\$50,000 - \$74,999	16.6%	-0.5%	
\$75,000 - \$99,999	10.2%	-0.6%	
\$100,000 - \$149,999	14.3%	-2.6%	
\$150,000 - \$199,999	6.5%	-2.1%	
\$200,000+	9.4%	-2.9%	

Bars show deviation from Summit County

Stacy Tramonte
330 590 8248 • STRamonte@pvccinc.com

Barbara Faciana
330 590 8230 • BFaciana@pvccinc.com