

SALE

Center for Conscious Healing
101 W. Park Place
Middletown Delaware 19709

Multi-Tenant Investment/User Property



Property Overview

- 2 Story Purpose built and approved Office Building
- Full Unfinished Basement
- +/-3,703 sf Facility
- Built in 2017
- 10 Individual Offices and Large Multi-Purpose Room
- Tenant Roster includes 9 Psychologist
- 2 HVAC systems and 2 Zones.
- Off Street Parking
- 1.15-acre Lot with room for future expansion
- Some neighbors include MOT Senior Center, Cadia Rehab Center & Everett Meredith Middle School
- Additional Features include 1 Full & 2 Half Bathrooms, 2 waiting rooms, Full Breakroom with seating area, Large Basement and more

Demographic Highlights

Middletown Delaware is a rapidly growing, suburban community of approximately 50,000+ residents. The area features a diverse population known for its high quality of life. The area boasts a median household income exceeding \$120K and high home ownership. With ongoing development, it represents an attractive middle-to-upper-income market ideal for long-term investment.

The information presented is believed to be accurate, but the users must verify it for their own satisfaction. Price and availability are subject to change without prior notice. The Seller's broker, any cooperating broker, and any salesperson working with either are representing the Seller's best interests and have fiduciary responsibilities to Seller, but are obligated to treat all parties fairly.

Contact:

John Roach

roach@musicommercial.com

Office: 302-594-1000 x102

Fax: 302-594-10

Musi Commercial Properties, Inc

5700 Kennett Pike

Centreville, DE 19807

musicommercial.com



Interior Photos

Multi-Purpose Room



Common Break Room



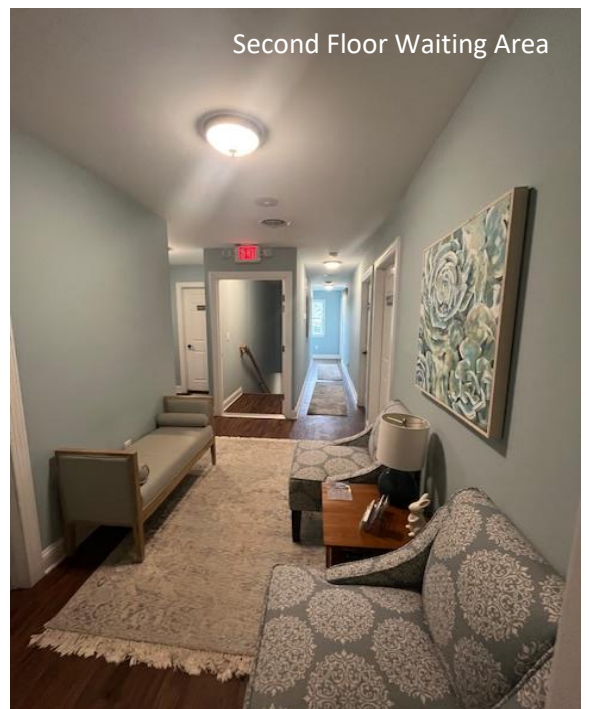
First Floor Waiting Area



First Floor Bathroom



Second Floor Waiting Area

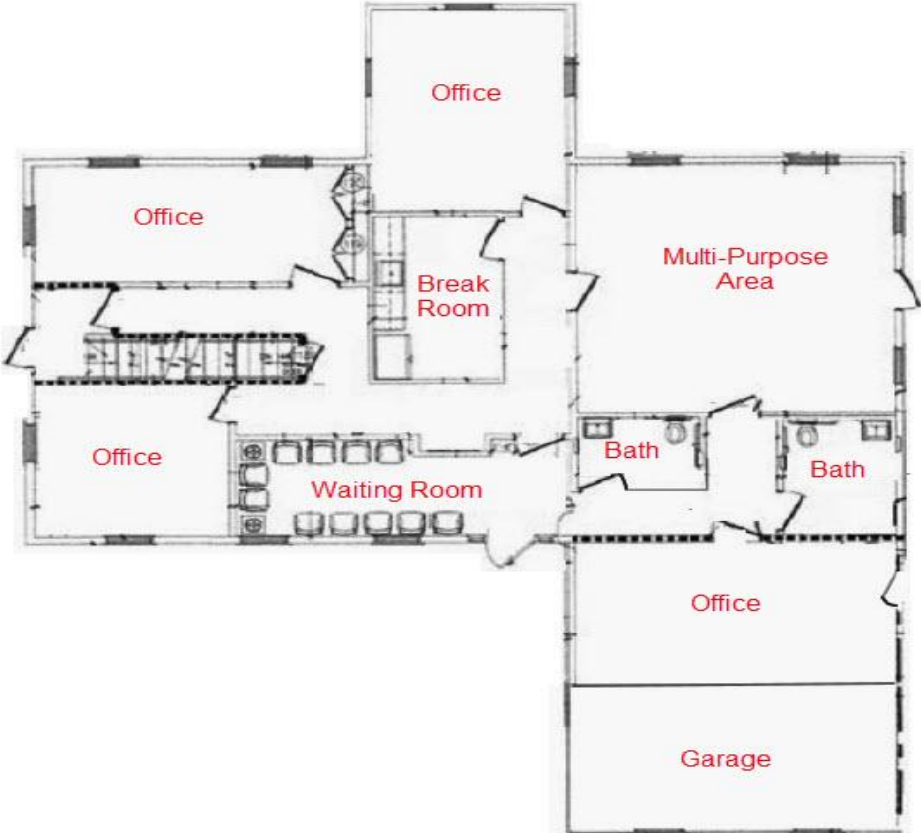


Basement



Space Plans

First Floor



Second Floor

