

111 Lenora Street

Henderson, NC | Industrial for Lease



PROPERTY OVERVIEW

ADDRESS	111 Lenora Street, Henderson, NC
BUILDING SIZE	±48,000 SF
OFFICE	±2,000 SF
DIMENSIONS	300' x 160'
ACREAGE	3.25 acres
ZONING	I2 - Industrial Non Park
CONSTRUCTION	Metal/Steel
CLEAR HEIGHT	13'8" - 20'
COLUMN SPACING	39' x 24'
TRUCK COURT	150'+
DOCK DOORS	2 (14' x 12') - with edge of dock levelers 2 (20' x 12') - with bumpers (double dock position)
DRIVE-IN DOORS	3 (14' x 14') - at grade
SPRINKLER	Wet System
UTILITIES	Electric, Water, Gas
FENCED OUTSIDE STORAGE	±0.6 acres fenced
FEATURES	- LED Lighting - Extra Trailer Parking

CONTACT

MICHAEL WALLACE | 919.219.1112 | mwallace@triprop.com

HUNT WYCHE | 919.740.4406 | hwyche@triprop.com

NAITRI PROPERTIES

LEASE

INDUSTRIAL

RATE \$4.75/SF

TICAM \$0.61/SF



4
Dock
Doors

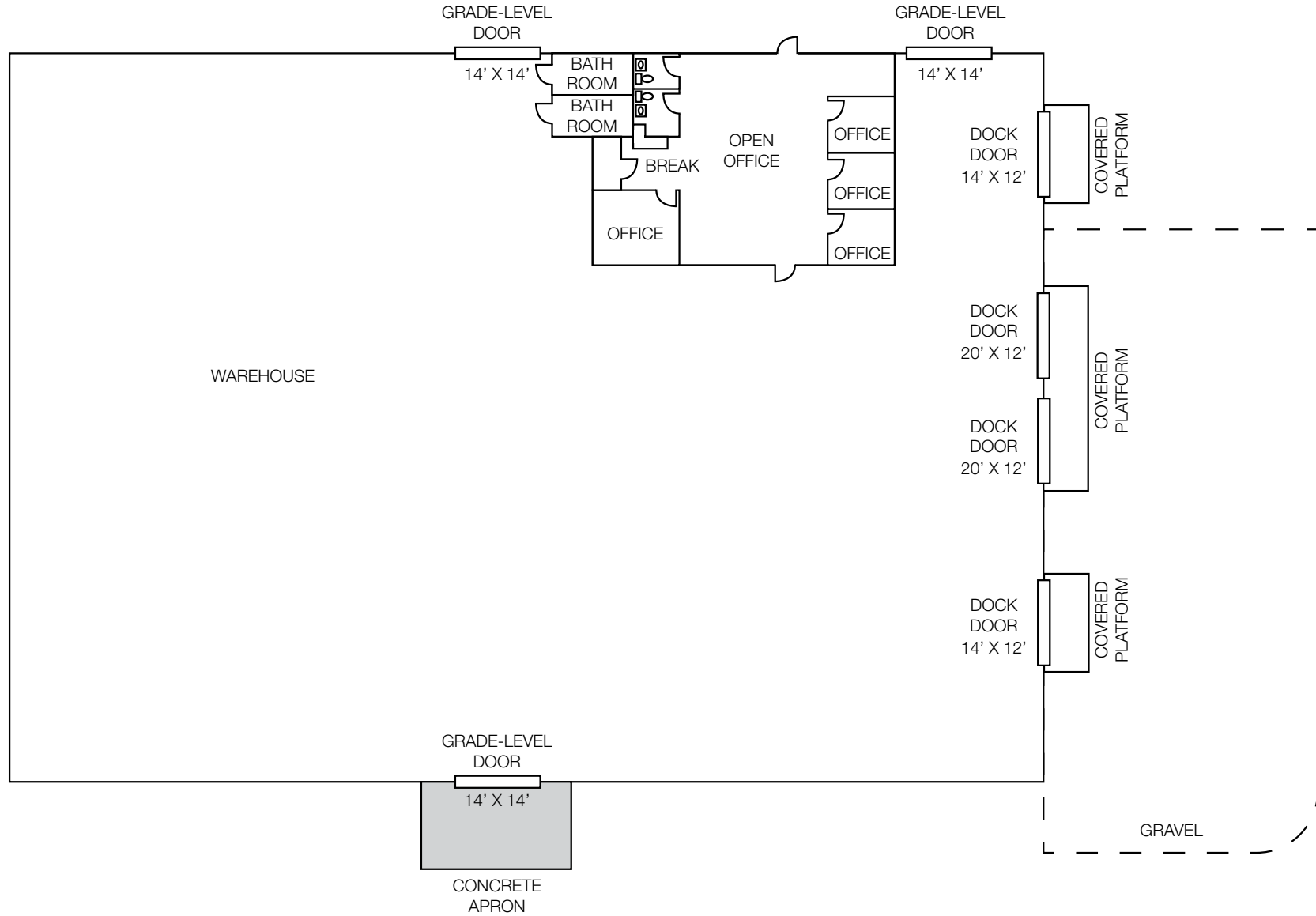


3
Grade-
Level
Drive-ins



**Fencing/
IOS - 0.6 ac**

FLOOR PLAN

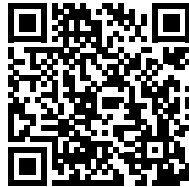
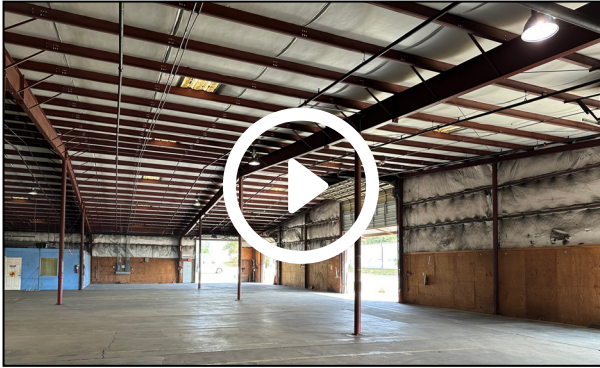


CONTACT
MICHAEL WALLACE | 919.219.1112 | mwallace@triprop.com
HUNT WYCHE | 919.740.4406 | hwyche@triprop.com

VIRTUAL TOUR

WAREHOUSE WITH FENCING/IOS - 0.6 AC

Please click or scan for VIRTUAL TOUR



AVAILABLE SPACE	48,000 SF
DATE AVAILABLE	Immediately
ADDITIONAL INFORMATION	- 2,000 SF Office / 46,000 SF Warehouse - 4 Dock Doors with bumpers, edge of dock levelers and covered platforms - 3 Grade Level Doors - Concrete Apron



CONTACT
MICHAEL WALLACE | 919.219.1112 | mwallace@triprop.com
HUNT WYCHE | 919.740.4406 | hwyche@triprop.com

NAITRI PROPERTIES

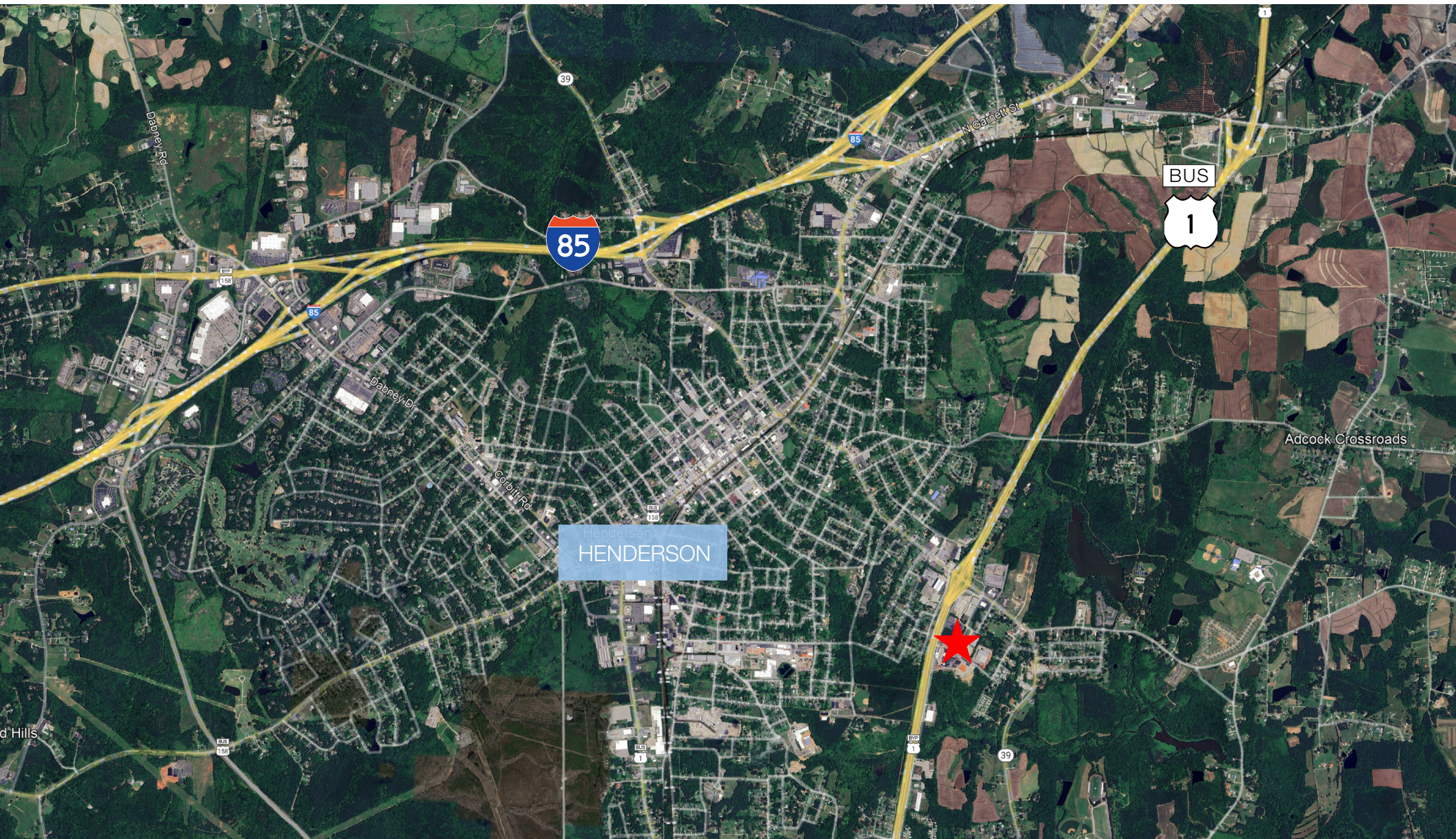
LOCAL AERIAL



CONTACT
MICHAEL WALLACE | 919.219.1112 | mwallace@triprop.com
HUNT WYCHE | 919.740.4406 | hwyche@triprop.com

NAITRI PROPERTIES

LOCATION + ACCESS



CONTACT
MICHAEL WALLACE | 919.219.1112 | mwallace@triprop.com
HUNT WYCHE | 919.740.4406 | hwyche@triprop.com

