

For Lease

Citispac in SouthEnd

2030 S. Tryon Street
Suite 3G

Contact Us

Phil Corriher, CCIM | CRX | CRRP
Senior Director | Charlotte
+1 704 409 2371
phil.corriher@colliers.com

Adam Farber
Vice President | Charlotte
+1 704 409 2369
adam.farber@colliers.com

Unique Office Condo Space

SouthEnd Submarket

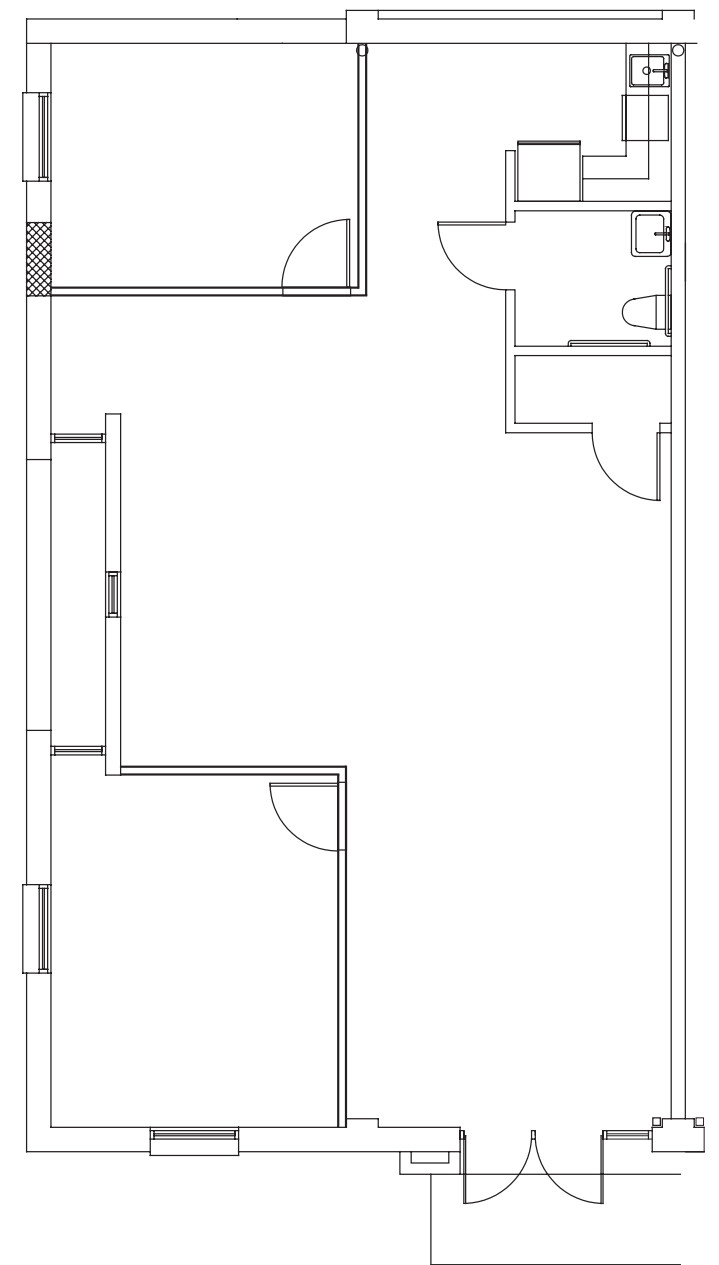
Suite 3G Available

1,412 SF For Lease

Lease Rate

\$38.00 PSF

*Modified Gross
Net of Utilities*



Key Features

- Suite 3G: 1,412 SF Available
- Available Immediately
- 20' Ceiling Heights Throughout
- (2) Offices
- Conference Area, Kitchen & Storage Room
- 4 Built in Work Stations
- (0.5) Miles to LYNX Blue Line East/West Station
- (0.8) Miles to Interstate 77
- (1.8) Miles to Uptown Charlotte
- Surrounded by 60+ Restaurants & Retailers
- In the Heart of Southend
- Lease Rate: \$38.00 PSF Modified Gross / Net of Utilities

Located in
the Heart of
South End



Citispac in SouthEnd

2030 S. Tryon Street
Suite 3G



Phil Corriher, CCIM | CRX | CRRP
Senior Vice President | Charlotte
+1 704 409 2371
phil.corriher@colliers.com

Adam Farber
Vice President | Charlotte
+1 704 409 2369
adam.farber@colliers.com

300 W. Summit Avenue
Suite 200
Charlotte, NC 28203
P: +1 704 409 9933
F: +1 704 409 9934
colliers.com/charlotte

