



NEW PADS ACROSS FROM WALMART

NEC of Maricopa-Casa Grande Hwy and Porter Rd
Maricopa, Arizona

Brian Gast
602.682.8155
brian.gast@velocityretail.com

Dean Ingram
602.703.3326
dean@dpcrc.com

Heather Prinsloo
602.682.8108
hp@velocityretail.com

Parker Jones
602.682.8182
parker.jones@velocityretail.com



NEW PADS ACROSS FROM WALMART

Property Highlights

- 6.64 acres perfect for retail, grocery, fast food, entertainment, services, office, medical, and other employment
- City offers Fast Track Permitting and is committed to assisting business in rapid expansion
- Ideal location in high density, growing residential area
- Pro-business local leadership offers low employer taxes and operating costs
- Growing agritech business and research facilities nearby, including USDA Arid-Land Agricultural Research Center, and University of Arizona Maricopa Agricultural Center
- Recent development includes: Pinal Energy; Arizona's first ethanol plant, and Marisol Energy 2; proposed 1,492-acre Maricopa Solar Park project
- North American proving grounds for Volkswagen and Nissan located in the City of Maricopa



Great Opportunity In Fast Growing Area!

Demographics

	1 ml	3 mi	5 mi
Estimated Population	5,088	47,624	65,431
Estimated Households	1,667	15,604	21,448
Med Household Income	\$92,862	\$86,968	\$88,826
Daytime Population	364	3,828	5,511

Source: SitesUSA

Traffic Counts

Maricopa-Casa Grande Hwy	13,965 VPD
Porter Rd	8,681 VPD
Total	22,646 VPD

Businesses Nearby



Brian Gast
602.682.8155
brian.gast@velocityretail.com

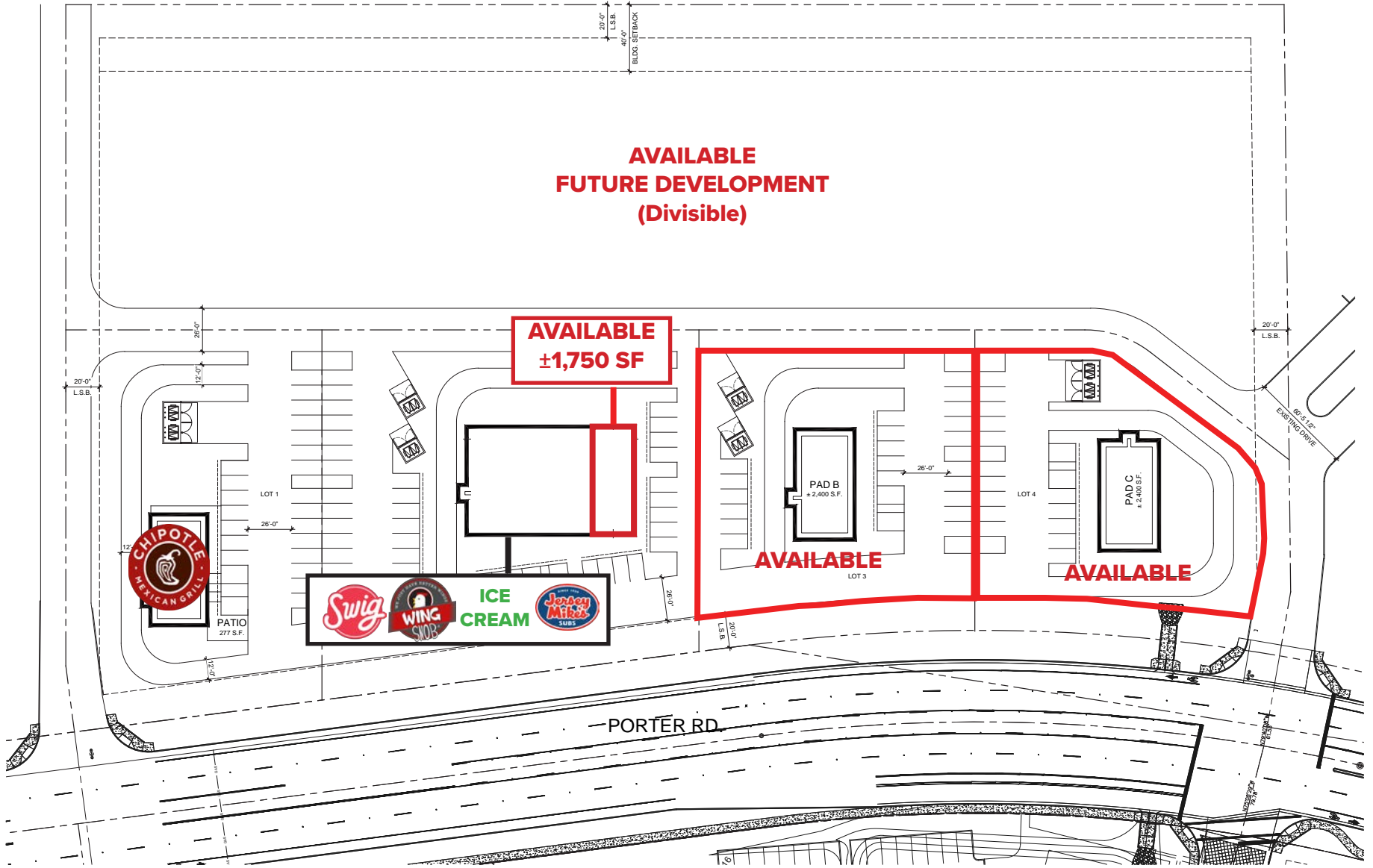
Dean Ingram
602.703.3326
dean@dpcrc.com

Heather Prinsloo
602.682.8108
hp@velocityretail.com

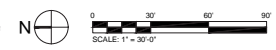
Parker Jones
602.682.8182
parker.jones@velocityretail.com



SITE PLAN



PROPOSED SITE PLAN - 05
SCALE: 1" = 30'-0"



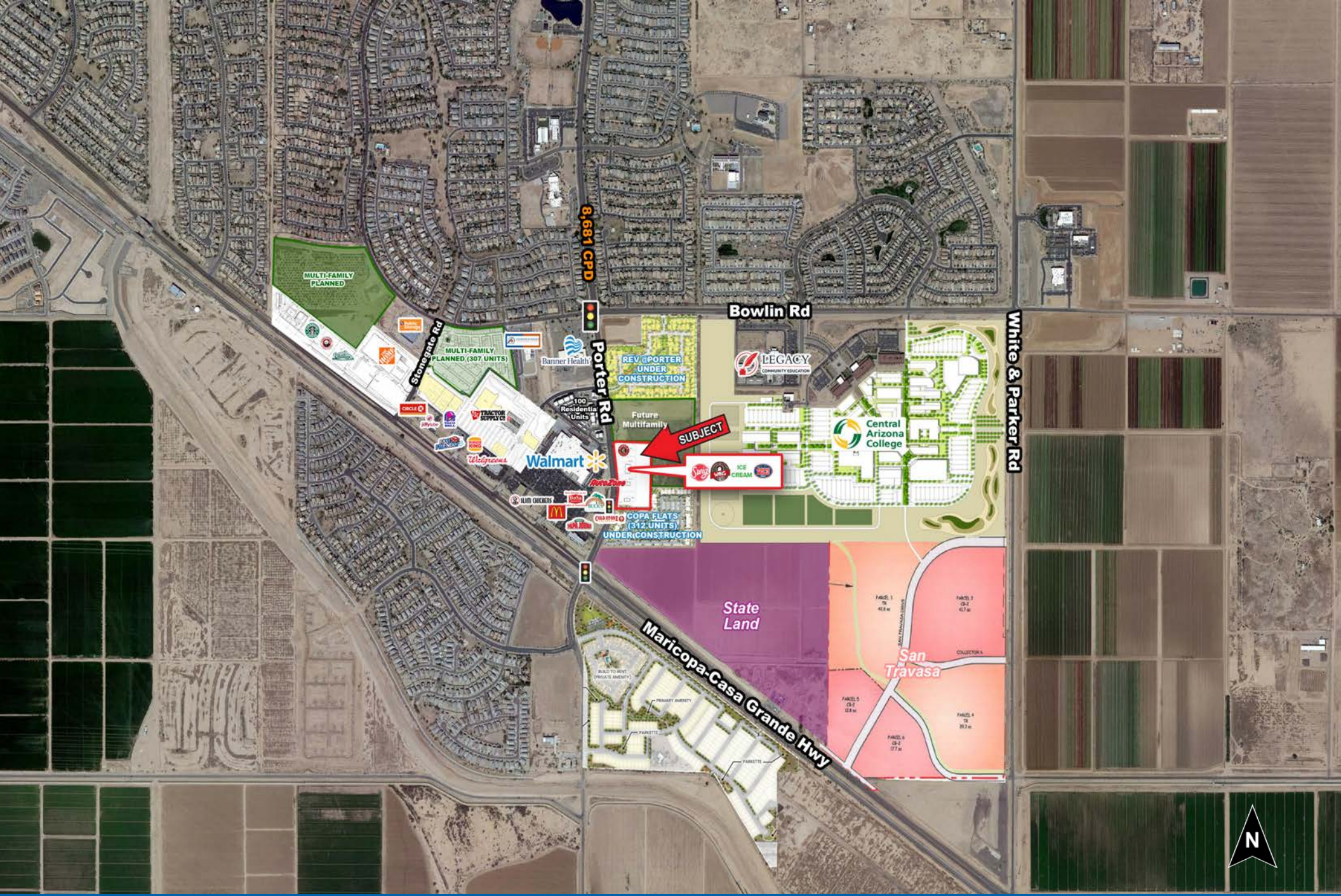
Brian Gast
602.682.8155
brian.gast@velocityretail.com

Dean Ingram
602.703.3326
dean@dpcrc.com

Heather Prinsloo
602.682.8108
hp@velocityretail.com

Parker Jones
602.682.8182
parker.jones@velocityretail.com





Brian Gast
 602.682.8155
 brian.gast@velocityretail.com

Dean Ingram
 602.703.3326
 dean@dpcrc.com

Heather Prinsloo
 602.682.8108
 hp@velocityretail.com

Parker Jones
 602.682.8182
 parker.jones@velocityretail.com





Legend

- Complete (13,067 Units)
- In Development (18,894 Units)
- Planned (31,314 Units)

**Planned Development:
Maricopa Station**
Planned 350,000 SF
Power Center
Anchors, Shops, Restaurants

SUBJECT

**AK-CHIN
INDIAN COMMUNITY**

Brian Gast
602.682.8155
brian.gast@velocityretail.com

Dean Ingram
602.703.3326
dean@dpcrc.com

Heather Prinsloo
602.682.8108
hp@velocityretail.com

Parker Jones
602.682.8182
parker.jones@velocityretail.com



DEMOGRAPHICS



2025 POPULATION

1 MILE: 5,088
3 MILES: 47,624
5 MILES: 65,431



MEDIAN HOUSEHOLD INCOME

1 MILE: \$92,862
3 MILES: \$86,968
5 MILES: \$88,826



POPULATION GROWTH PROJECTION 2025 - 2030

1 MILE: 3.6%
3 MILES: 2.8%
5 MILES: 2.7%



TOTAL BUSINESSES

1 MILE: 48
3 MILES: 634
5 MILES: 974



2025 TOTAL HOUSEHOLDS

1 MILE: 1,667
3 MILES: 15,604
5 MILES: 21,448



DAYTIME POPULATION

1 MILE: 364
3 MILES: 3,828
5 MILES: 5,511



MEDIAN HOME VALUE

1 MILE: \$322,998
3 MILES: \$305,419
5 MILES: \$303,186

Brian Gast

602.682.8155

brian.gast@velocityretail.com

Dean Ingram

602.703.3326

dean@dpcrc.com

Heather Prinsloo

602.682.8108

hp@velocityretail.com

Parker Jones

602.682.8182

parker.jones@velocityretail.com





2415 East Camelback Road, Suite 400
Phoenix, Arizona 85016
602.682.8100

Brian Gast

602.682.8155
brian.gast@velocityretail.com

Dean Ingram

602.703.3326
dean@dpcrc.com

Heather Prinsloo

602.682.8108
heather.prinsloo@velocityretail.com

Parker Jones

602.682.8182
parker.jones@velocityretail.com

The information contained in this brochure has been obtained from sources believed reliable. We have not verified the information, and make no guarantee, warranty or representation about it. Any financial projections, assumptions or estimates used are for example only and do not represent the current or future performance of the property. We recommend that you and/or your advisors conduct a complete analysis of the property and make your own determination on the suitability of the property for your specific needs. Accelerated Development Services and the ADS logo are service marks of Velocity Retail Group, LLC. All other marks displayed in this document are the property of their respective owners.

