

Medical Office | For Lease

CBRE

# Cypress Creek Medical Pavilion

6,247 SF Build-To-Suit Medical Office Suite

2122 W Cypress Creek Road  
Fort Lauderdale, FL 33309

Last Unit Remaining



# Cypress Creek Medical Pavilion

2122 W Cypress Creek Road | Fort Lauderdale, FL 33309



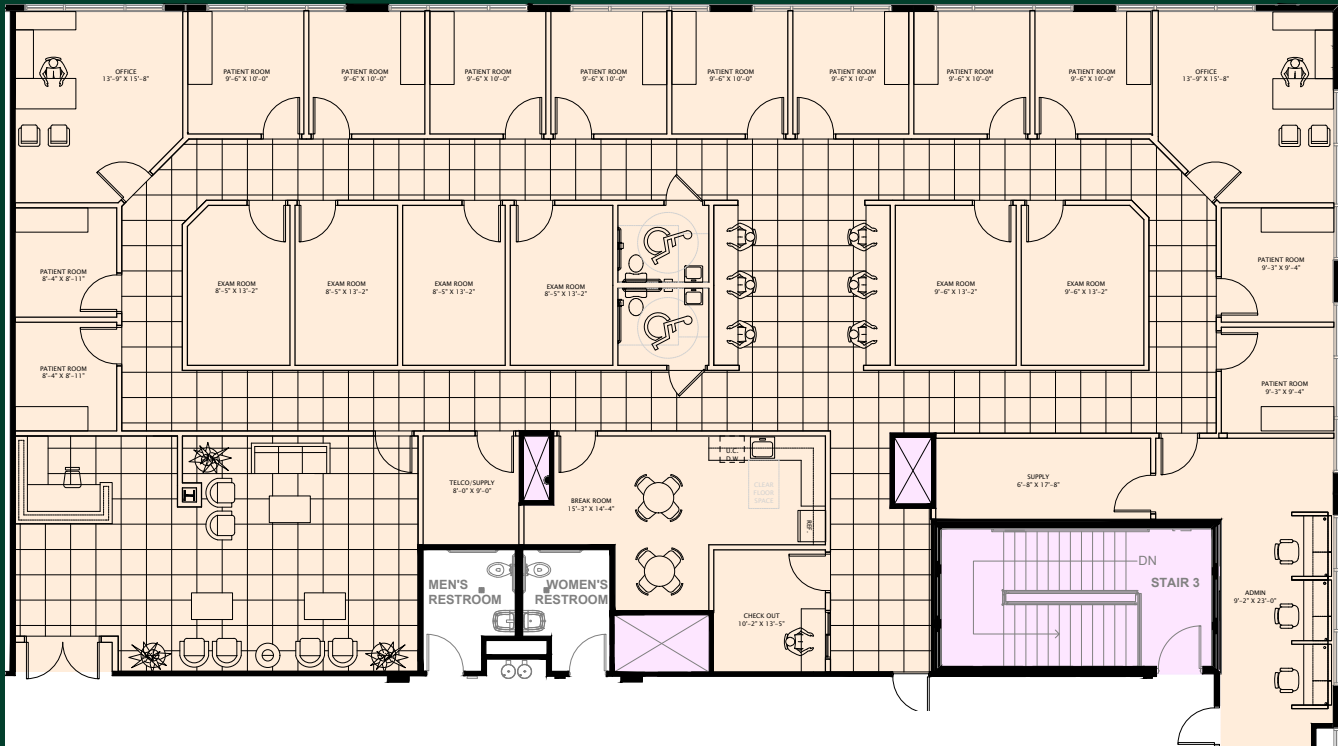
## Property Highlights

- + 79,390 SF Class "A" Medical Office Facility
- + Ample parking with a 5.6/1,000 SF ratio
- + Suite 203 with 6,247 RSF Available
- + Rental Rate \$26.00 PSF, NNN
- + Located in Uptown Fort Lauderdale near I-95, Turnpike, FLL Airport, FXE Airport
- + On-site ASC (Ambulatory Surgical Center); Urgent Care; & Offerdahl's Off-The-Grill

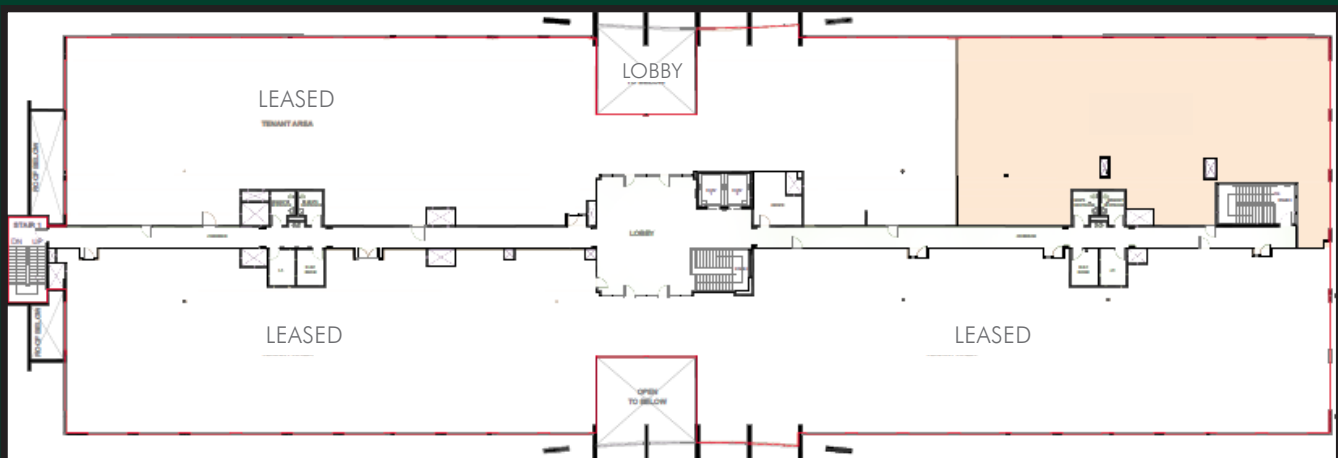


# Last Unit Remaining Option to Demise

## Spec Suite 203 Floorplan - 6,247 SF



## 2nd Floor Location



## One Destination



URGENT CARE CLINIC



PHYSICAL THERAPY



PEDIATRICS



PET IMAGING



MEDICAL OFFICE



PORTE - COCHÈRE



AMBULATORY SURGICAL CENTER



ON-SITE DINING

### Contact Us

**Deborah Fink**  
Vice President  
O: 954-331-1717  
Deborah.Fink@cbre.com

**Carol Ellis-Cutler**  
First Vice President  
C: 305 778 0778  
Carol.EllisCutler@cbre.com

© 2023 CBRE, Inc. All rights reserved. This information has been obtained from sources believed reliable, but has not been verified for accuracy or completeness. You should conduct a careful, independent investigation of the property and verify all information. Any reliance on this information is solely at your own risk. CBRE and the CBRE logo are service marks of CBRE, Inc. All other marks displayed on this document are the property of their respective owners, and the use of such logos does not imply any affiliation with or endorsement of CBRE. Photos herein are the property of their respective owners. Use of these images without the express written consent of the owner is prohibited.