

# MOUNTLAKE TERRACE PROFESSIONAL CENTER FOR LEASE

6405 218th St SW | Mountlake Terrace, WA 98043



The information contained herein has been obtained from reliable sources but is not guaranteed by CCM Commercial. A prospective Buyer/Tenant should verify each item related to this property and all information contained herein.

**agencyone**

Cal C. Mitchell T 425.922.2886 F 888.417.1792 Cal@CCMcommercial.com



**CCM Commercial**

Commercial Real Estate Services



## EXCLUSIVE REPRESENTATION & DISCLOSURE NOTICE OF MARKETING ASSET COPYRIGHTS

CCM Commercial has been retained as the Exclusive Listing Broker for the Mountlake Terrace Professional Center located at 6405 218th St SW, Mountlake Terrace, WA 98043.

This Marketing Flyer has been exclusively created and prepared by CCM Commercial for business / property marketing and advertising purposes. CCM Commercial make no guarantees, representations or warranties of any kind, express or implied, regarding the information contained within this document. All interested parties and / or their agents are advised to research and verify all information provided herein, and conduct their own investigations.

**COPYRIGHT NOTICE: ALL PHOTOS & VIDEOS contained within this Marketing Flyer are exclusively created, copyrighted, and owned by CCM Commercial.** No photos contained herein this document may be duplicated, re-purposed, re-distributed, or extricated from this document without first receiving prior, written consent and authorization from Cal C. Mitchell of CCM Commercial.

© CCM Commercial Real Estate Services.



**EXCLUSIVE TENANT LISTING BROKER**



**CAL C. MITCHELL, CCIM**

Principal | Managing Broker | MCNE | CLHMS

**CCM COMMERCIAL**

Hello: 425.922.2886

Email: [cal@ccmcommercial.com](mailto:cal@ccmcommercial.com)

## Property Features



### PROPERTY / BUSINESS FEATURES

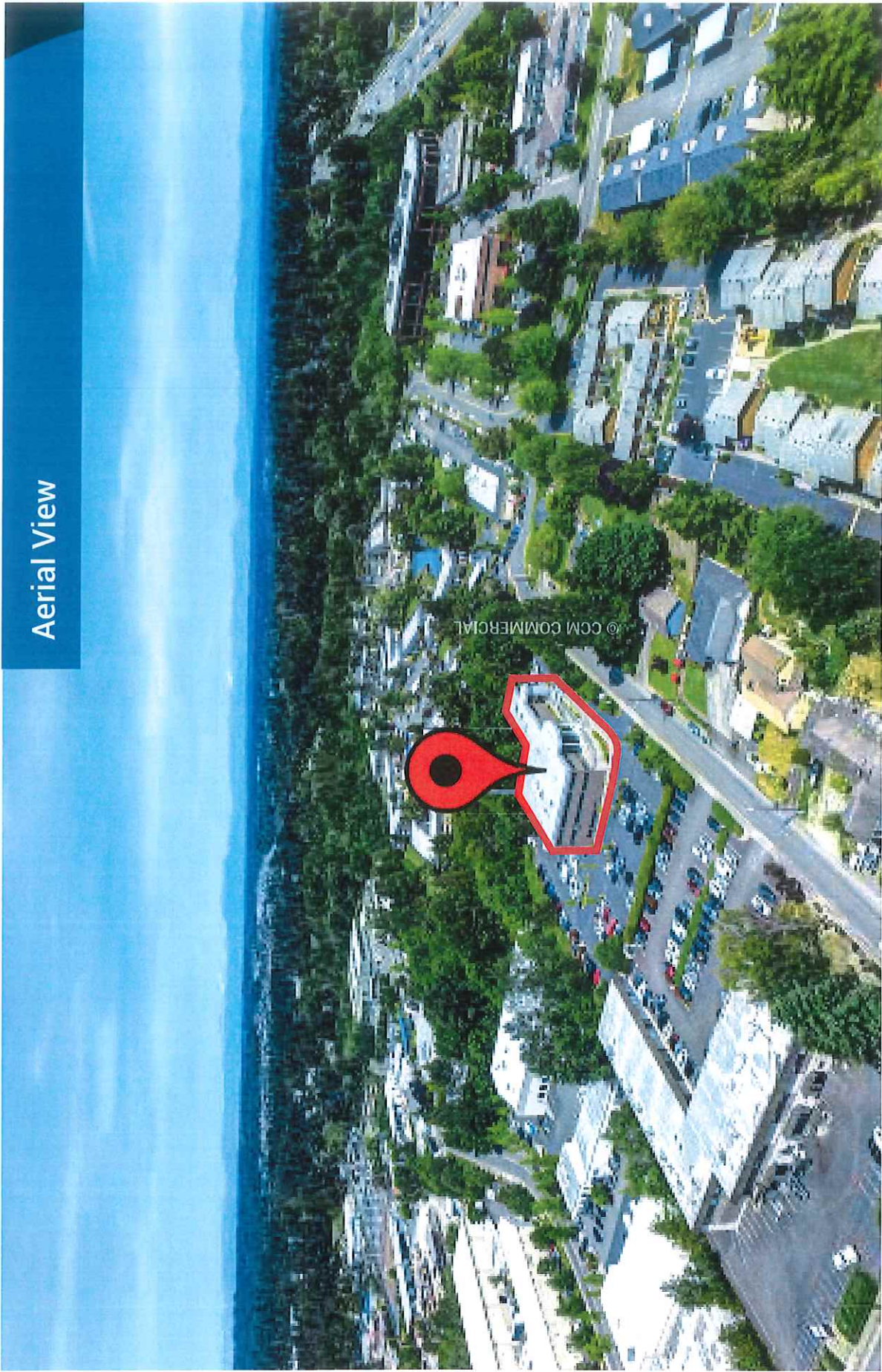
- Class A — Medical / Dental / Professional Office Space
- Approved Dual Usage (2 Bedrooms / Office Suites)
- 1 Full Bathroom
- 1 Kitchen
- Washer & Dryer
- Building & Monument signage available
- Abundant FREE PARKING all around
- Multiple Local Amenities Nearby
- Excellent Street Visibility
- Premier North Seattle Location

### TOUR INSTRUCTIONS

- Please call Cal at 425.922.2886 to Schedule Tours
- No Tours Without Listing Agent Present
- Do Not Contact or Disturb Employees

**MOUNTLAKE TERRACE PROFESSIONAL CENTER** is a well established medical and professional mixed used building. Elegant architecture with welcoming steps leading to a grand front entrance. Abundance of FREE parking. Multiple on-site amenities. 25,000+ VPD. Numerous amenities nearby. Minutes to I-5 & HWY 99.

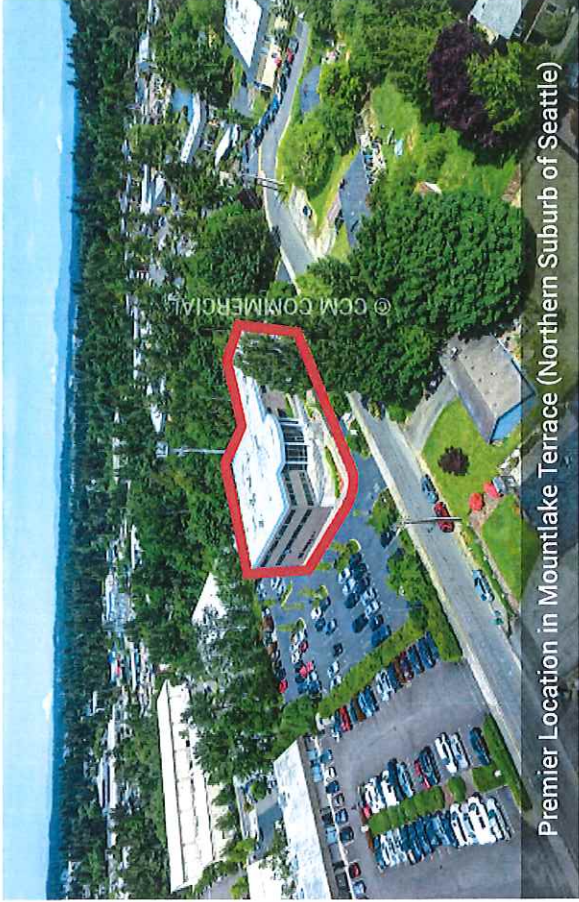
# Aerial View



Cal C. Mitchell    T 425.922.2886    F 888.417.1792    Ca@CCMcommercial.com

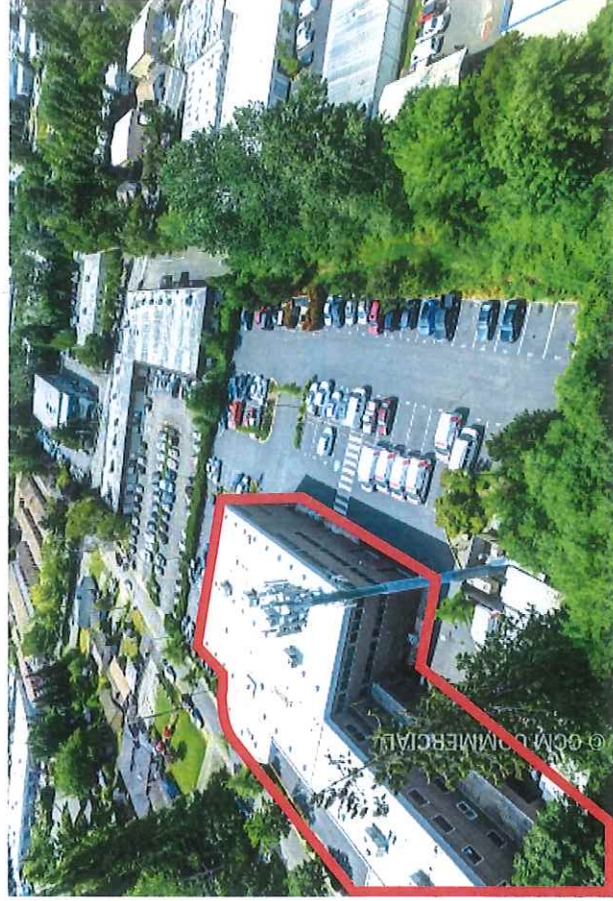
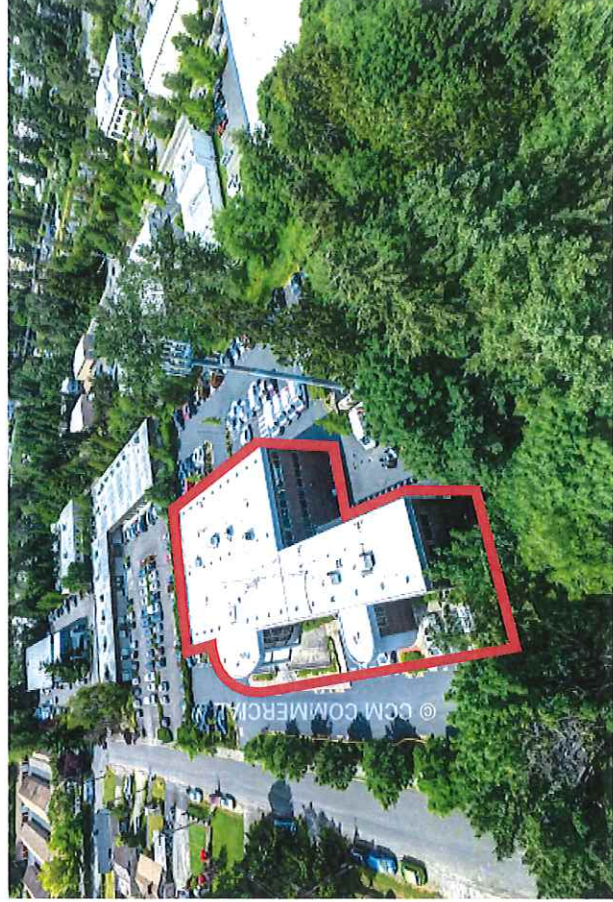
The information contained herein has been obtained from reliable sources but is not guaranteed by CCM Commercial. A prospective Buyer/Tenant should verify each item related to this property and all information contained herein.

agencyone



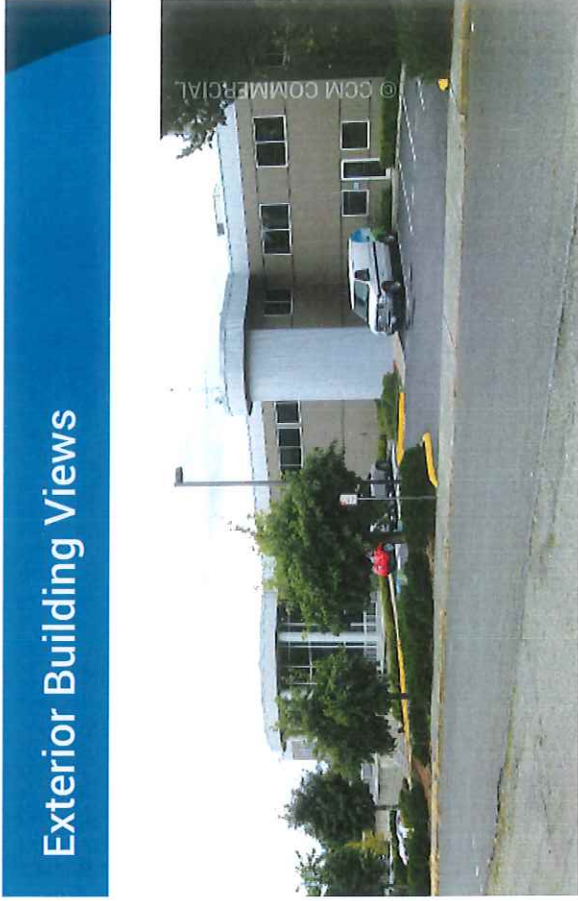
Premier Location in Mountlake Terrace (Northern Suburb of Seattle)

# Aerial Views





Well Established Medical & Professional Mixed Use Building



## Exterior Building Views



**CCM Commercial**  
Commercial Real Estate Services

Cal C. Mitchell

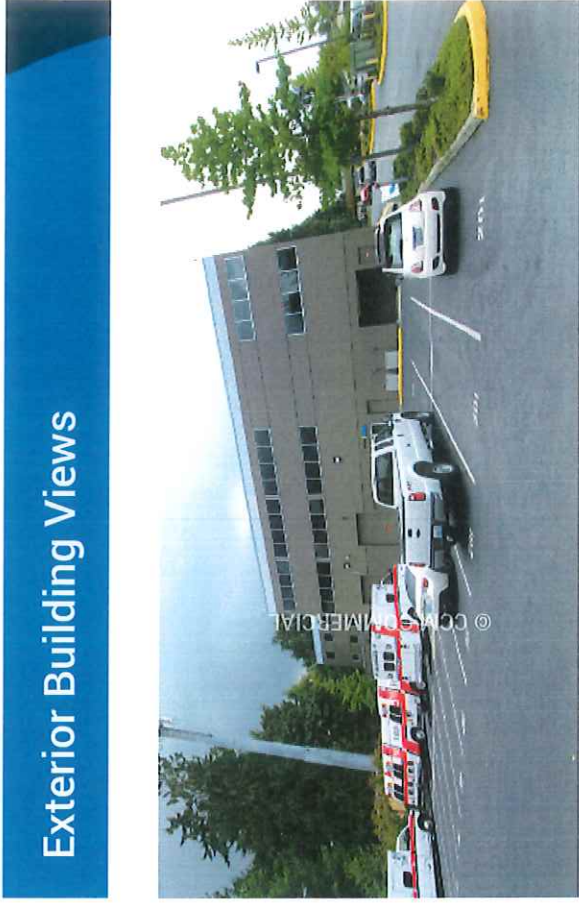
T 425.922.2886

F 888.417.1792

Cal@CCMcommercial.com

The information contained herein has been obtained from reliable sources but is not guaranteed by CCM Commercial. A prospective Buyer/tenant should verify each item related to this property and all information contained herein.

agencyone



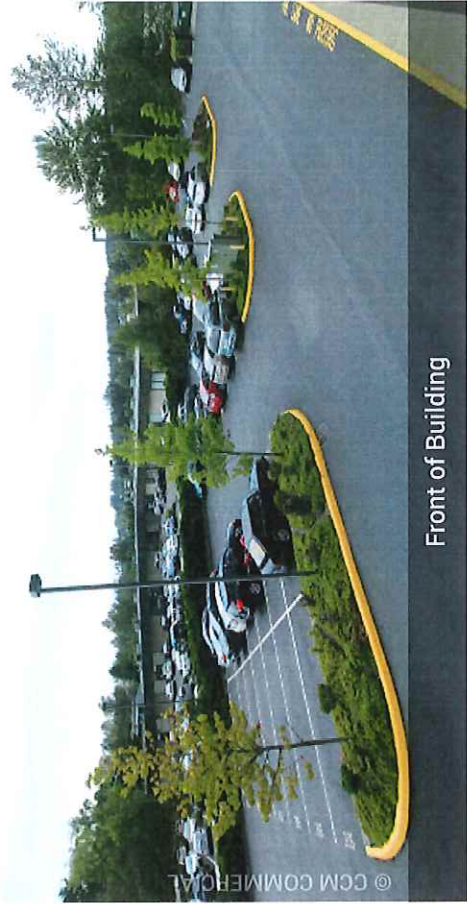
## Exterior Building Views



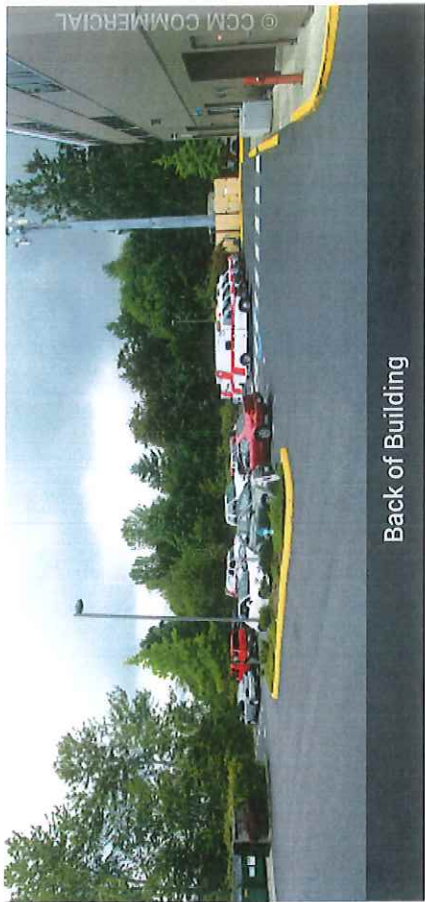
Grade Level Doors



# FREE Parking All Around Building



Front of Building



Back of Building



Front of Building



**CCM Commercial**

Commercial Real Estate Services

**Cal C. Mitchell**

T 425.922.2886

F 888.417.1792

Cal@CCMcommercial.com

The information contained herein has been obtained from reliable sources but is not guaranteed by CCM Commercial. A prospective Buyer/Tenant should verify each item related to this property and all information contained herein.

**agencyone**

# Neighborhood Demographics

## Demographics

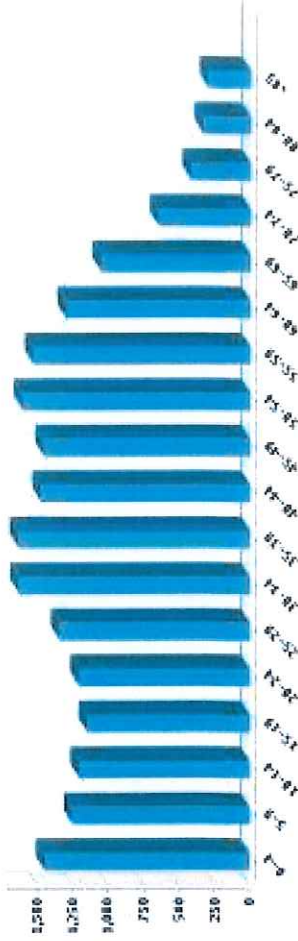
### Population Summary

Estimated Population: 20,914  
 Population Growth (2000-2010): 5%  
 Population Density (pop./sq. mi.): 5,124  
 Median Age: 28.89

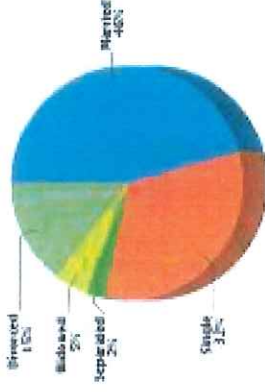
### Household

Number of Households: 8,602  
 Households with Children: 2  
 Households w/ Children: 2,408

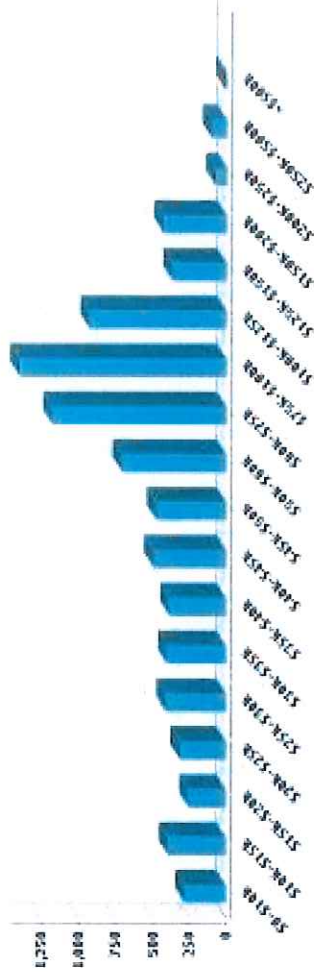
### Age



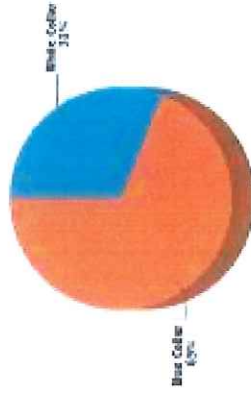
### Marital Status



### Household Income



### Race

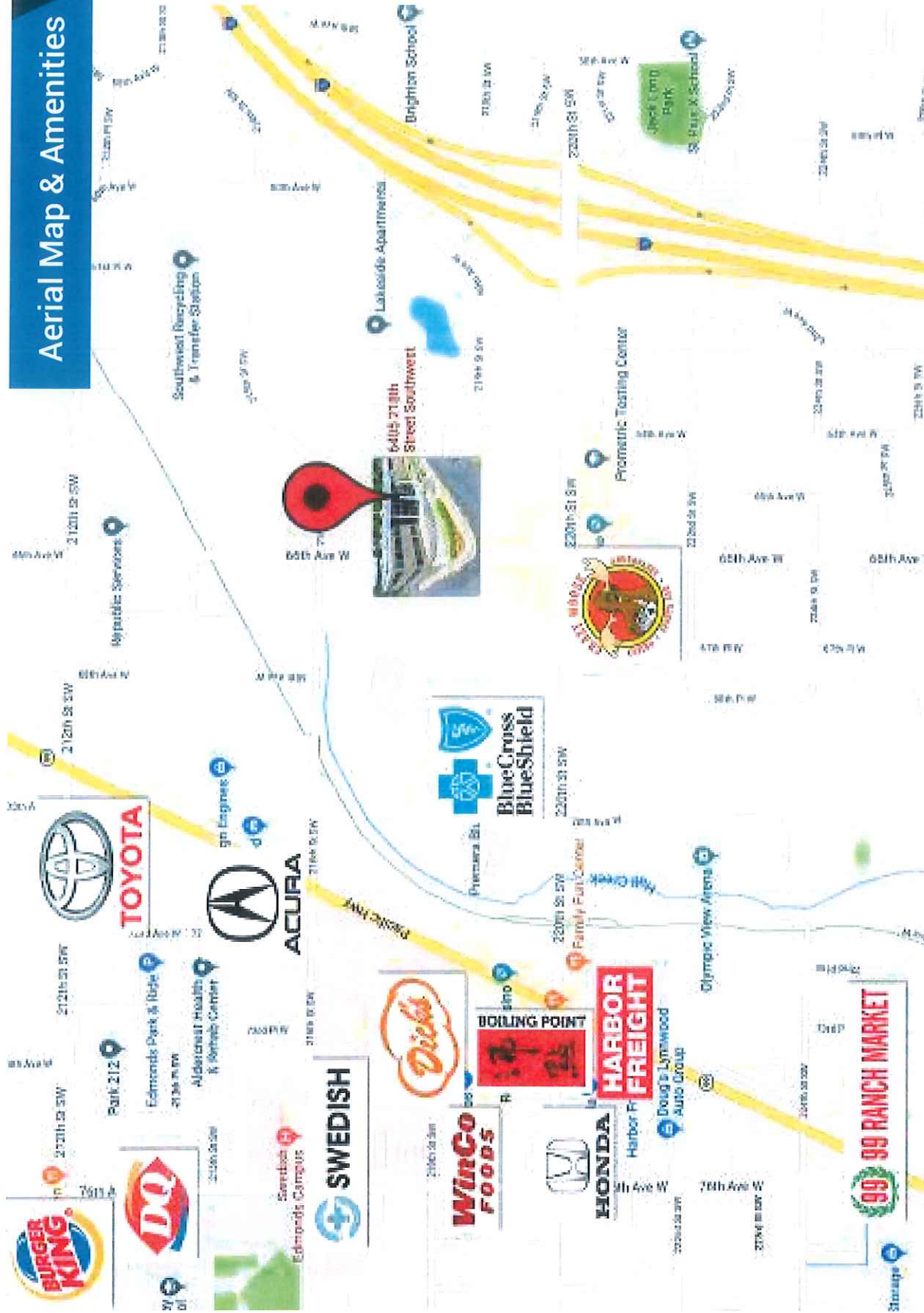


Cal C. Mitchell    T 425.922.2886    F 888.417.1792    Cal@CCMcommercial.com

The information contained herein has been obtained from reliable sources but is not guaranteed by CCM Commercial. A prospective Buyer/Tenant should verify each item related to this property and all information contained herein.



# Aerial Map & Amenities



The information contained herein has been obtained from reliable sources but is not guaranteed by CCM Commercial. A prospective Buyer/Tenant should verify each item related to this property and all information contained herein.

Cal C. Mitchell

T 425.922.2886

F 888.417.1792

Cal@CCMcommercial.com

agencyone