

APEX BUSINESS CENTER

4141/4201/4225 38TH ST. S., FARGO, ND 58104



Contact
Agent for
Incentives!

FOR LEASE



GREAT SOUTH FARGO OFFICE & WAREHOUSE FOR LEASE

Space Available: 867 - 13,453 SF

Base Rent: \$10.00 - \$13.50 PSF

CAM: \$2.05 PSF

Tenant Expenses: Utilities, Janitorial, Phone/Internet

Paul Campbell | 701.893.2826

paul.campbell@goldmark.com

Goldmark Commercial Real Estate

www.goldmarkcommercial.com

APEX BUSINESS CENTER

4141/4201/4225 38TH ST. S., FARGO, ND 58104

GOLDMARKTM
COMMERCIAL REAL ESTATE INC

SPACE AVAILABLE

867 - 13,453 SF

BASE RENT

\$12.00 - 13.50 PSF = Office
\$10.00 PSF = Warehouse

CAM

\$2.05 PSF

TENANT EXPENSES

Utilities
Phone/Internet
Janitorial

PROPERTY DESCRIPTION:

Fantastic office and warehouse spaces are available at the Apex Business Center! At great rental rates, these office and warehouse spaces are unique to the South Fargo area. Conveniently located near the corner of I-29 and 40th Avenue S, Apex Business Center boasts front door parking, visible monument signage from I-29, and other amenities. Call today to move into your new business headquarters!

OFFICE SPACE AVAILABLE:

4141-2A 1,500 SF
4141-E 2,712 SF

4151-A 1,337 SF

4201-108 2,585 SF

4225-108 867 SF
4225-109 2,980 SF
4225-110 1,218 SF
4225-202 13,453 SF

WAREHOUSE SPACE AVAILABLE:

4141-S6 1,800 SF

This information has been secured from sources we believe to be reliable, but we make no representation or warranties, expressed or implied, as to the accuracy of the information. Interested parties should conduct their own independent investigations and rely only on those results.



APEX BUSINESS CENTER

4141/4201/4225 38TH ST. S., FARGO, ND 58104

GOLDMARK[™]
COMMERCIAL REAL ESTATE INC

SITE PLAN



APEX BUSINESSES:

- Dietrich Homes
- Ironclad Marketing
- YMCA Learning Center
- ReNew Medical Clinic
- Sammons Financial
- BioGirls
- Farmers Union Insurance
- Coaches Choice
- Brazil Law Firm

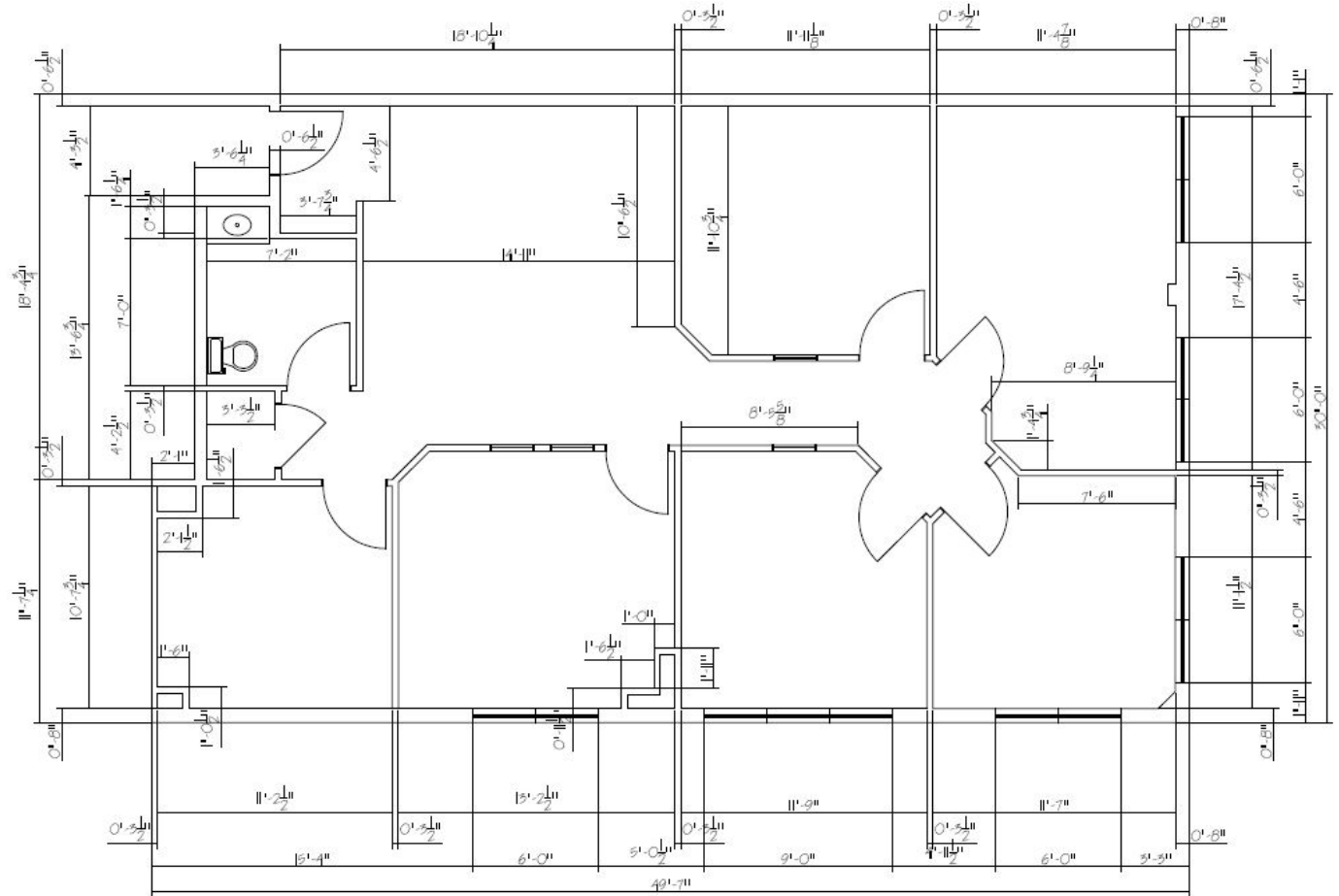
AREA BUSINESSES:

- Microsoft
- Aldevron
- Titan Machinery
- PAM Rehab
- Vaaler Insurance
- Balance Accounting
- Shotwell Floral
- Aldi
- Essentia Health

4747 - 2A



GOLDMARKTM
COMMERCIAL REAL ESTATE INC



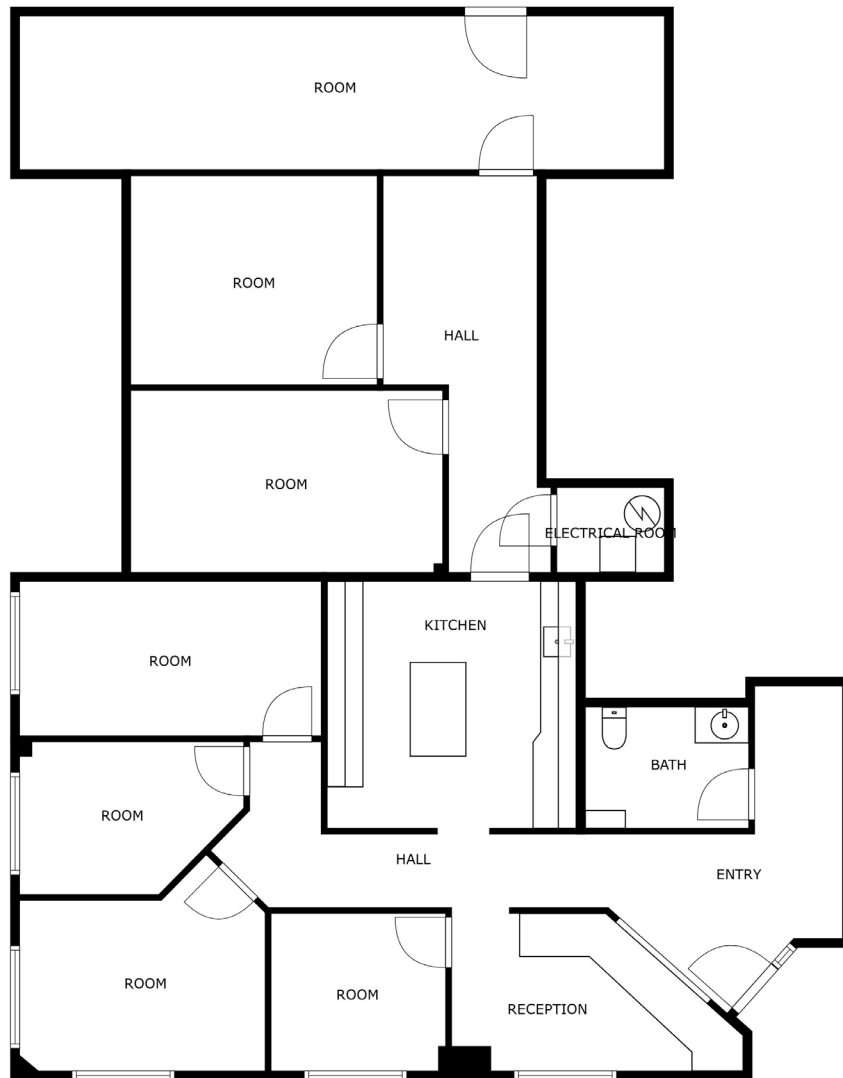
-
- A photograph of a large, empty office space. The room features blue carpeting and a drop ceiling with several square fluorescent light fixtures. On the left, there is a large, plain wall. To the right, a doorway leads to another area, and there are windows with dark frames. The space appears to be a common area or a large office.



APEX BUSINESS CENTER

4141/4201/4225 38TH ST. S., FARGO, ND 58104

GOLDMARK™
COMMERCIAL REAL ESTATE INC



- 2,712 SF
- 1st floor with front door parking
- 5 offices
- Conference room
- Private restroom
- Production and lounge area



APEX BUSINESS CENTER

4141/4201/4225 38TH ST. S., FARGO, ND 58104



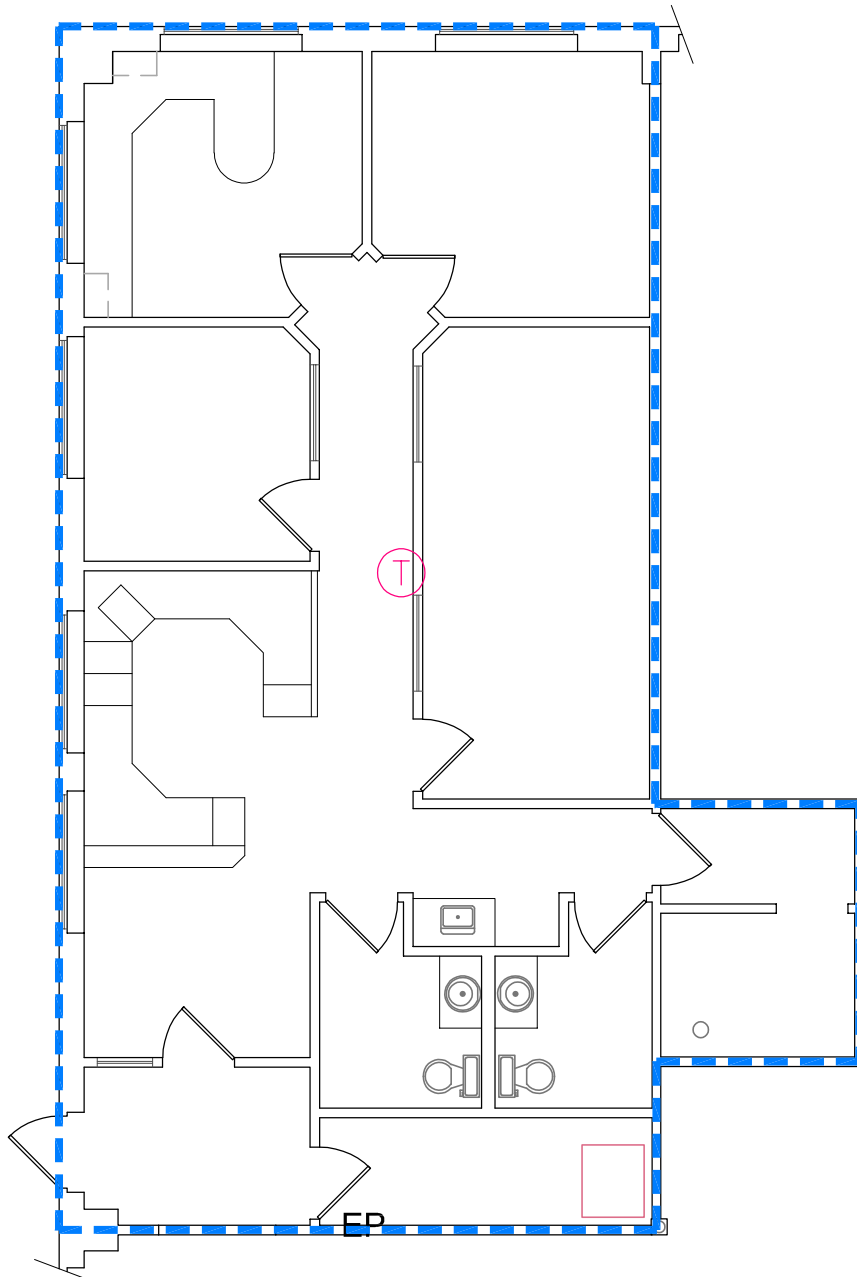
- 1,800 SF
- Warehouse with office area in mezzanine

APEX BUSINESS CENTER

4141/4201/4225 38TH ST. S., FARGO, ND 58104

GOLDMARKTM
COMMERCIAL REAL ESTATE INC

4151 - A



- 1,337 SF
- Restrooms
- 4 offices
- Open work area



APEX BUSINESS CENTER

4141/4201/4225 38TH ST. S., FARGO, ND 58104

GOLDMARKTM
COMMERCIAL REAL ESTATE INC



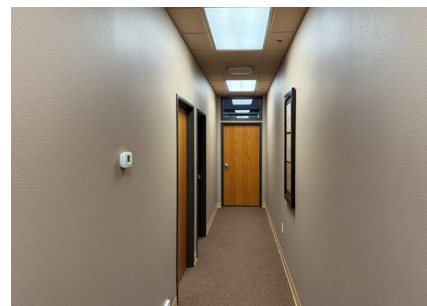
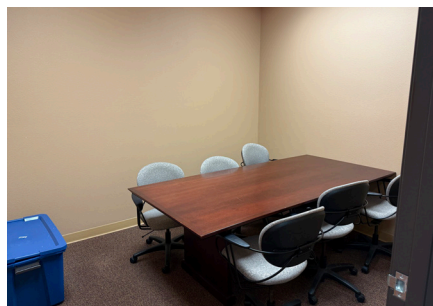
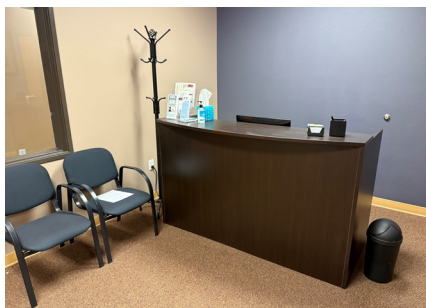
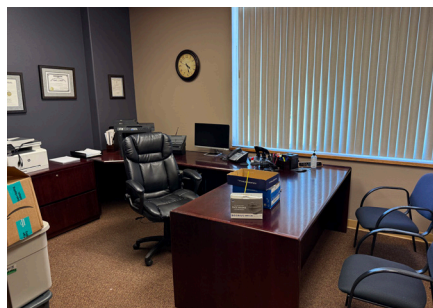
- 2,585 SF
- 1st floor with front door parking
- Nice foyer area
- Large open area with large windows
- 6 rooms for offices or storage
- Private restroom
- Sink and lounge area



APEX BUSINESS CENTER

4141/4201/4225 38TH ST. S., FARGO, ND 58104

GOLDMARK™
COMMERCIAL REAL ESTATE INC



- 867 SF
- 3 offices
- Reception area
- Shared conference room
- Restrooms across the hallway

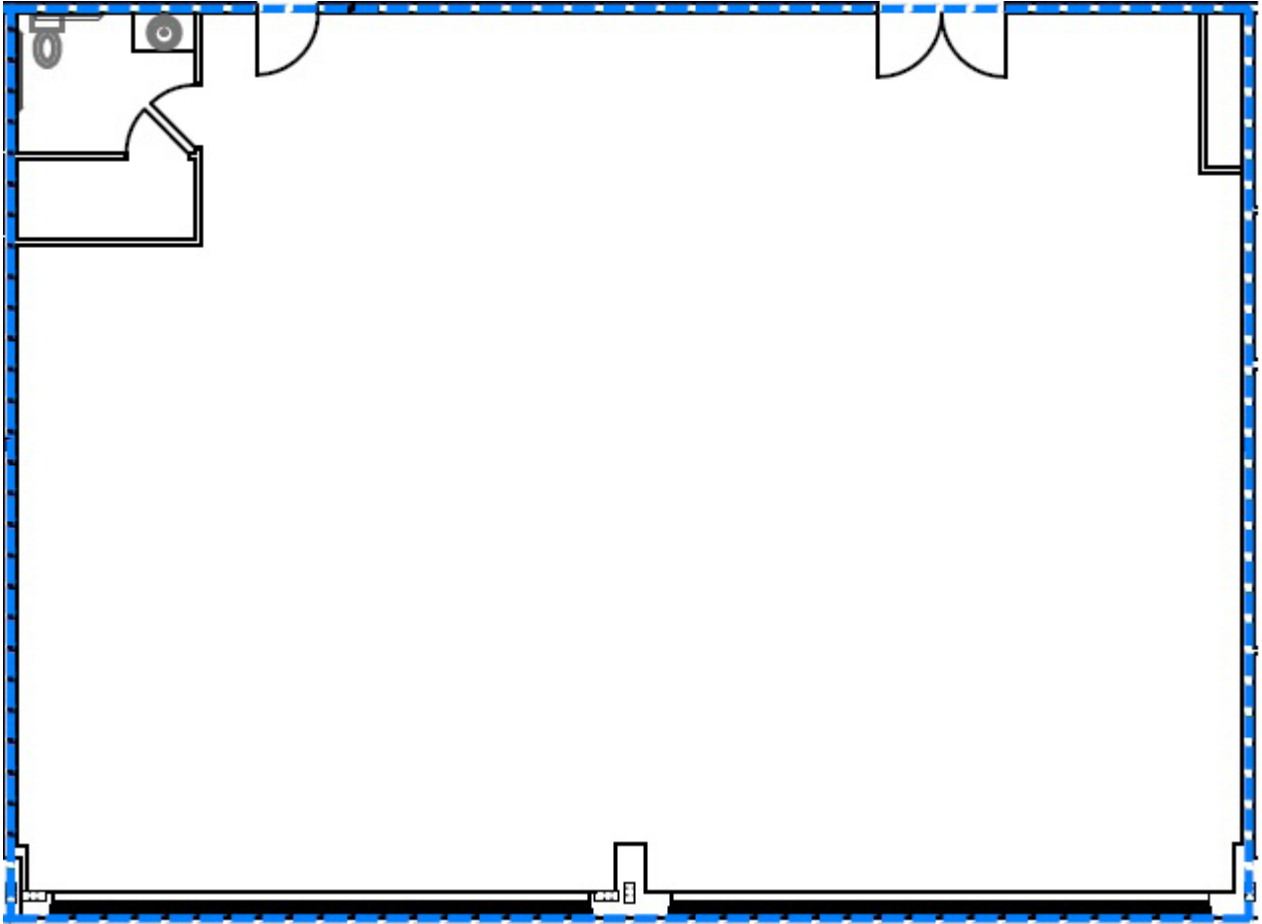


APEX BUSINESS CENTER

4141/4201/4225 38TH ST. S., FARGO, ND 58104

GOLDMARK[™]
COMMERCIAL REAL ESTATE INC

4225 - 109



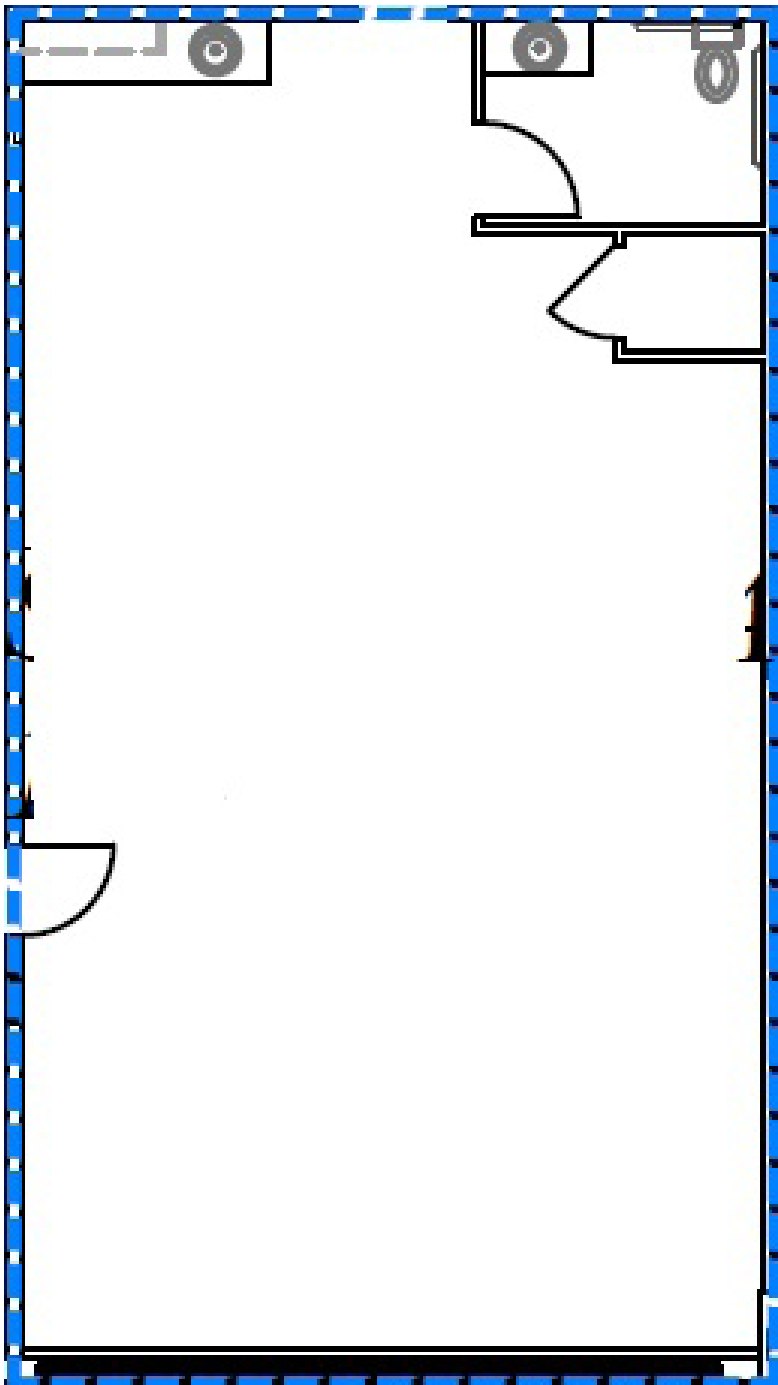
- 2,980 SF
- \$13.50 PSF

APEX BUSINESS CENTER

4141/4201/4225 38TH ST. S., FARGO, ND 58104



4225 - 110



- 1,218 SF
- \$13.50 PSF

APEX BUSINESS CENTER

4141/4201/4225 38TH ST. S., FARGO, ND 58104

GOLDMARK[™]
COMMERCIAL REAL ESTATE INC

