

161C

FOR LEASE

*Newly Refurbished ±27,990 SF industrial space
with secure private yard.*

 VIEW VIRTUAL TOUR

161 STARLITE ST UNIT C, SOUTH SAN FRANCISCO, CA, 94080

±27,990 SF
BUILDING

±2,000 SF
OFFICE SPACE IN BUILDING



Available now

Negotiable lease term

±27,990 total RSF

Secure private side yard with adequate parking for up to 34 vehicles plus 8 additional unreserved parking stalls

Two (2) grade level doors

One (1) dock high platform accesses, two (2) grade level door entry points

16'-17' clear height

Power 600amps 480/277 Volts 3 phase/4 wire

Earthquake retrofit complete

Sprinklers

Skylights throughout

2 MI

WALK TO SAN BRUNO
BART AND CALTRAIN

8 MIN

DRIVE TO SAN FRANCISCO
INTL AIRPORT

161 STARLITE ST UNIT C

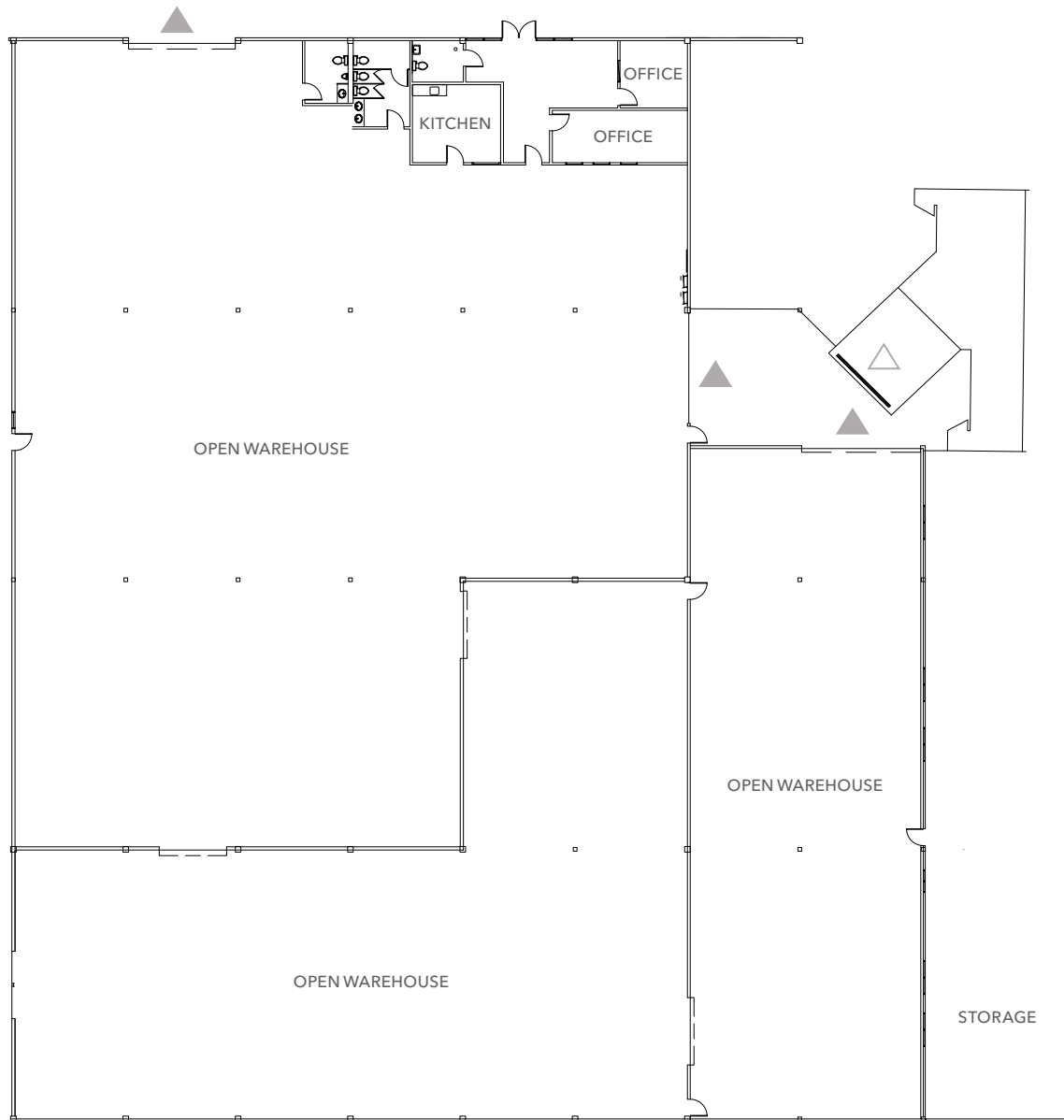


AVAILABLE FOR LEASE

KIDDER MATHEWS







±27,990 SF

AVAILABLE

NOW

AVAILABLE

[VIEW VIRTUAL TOUR](#)

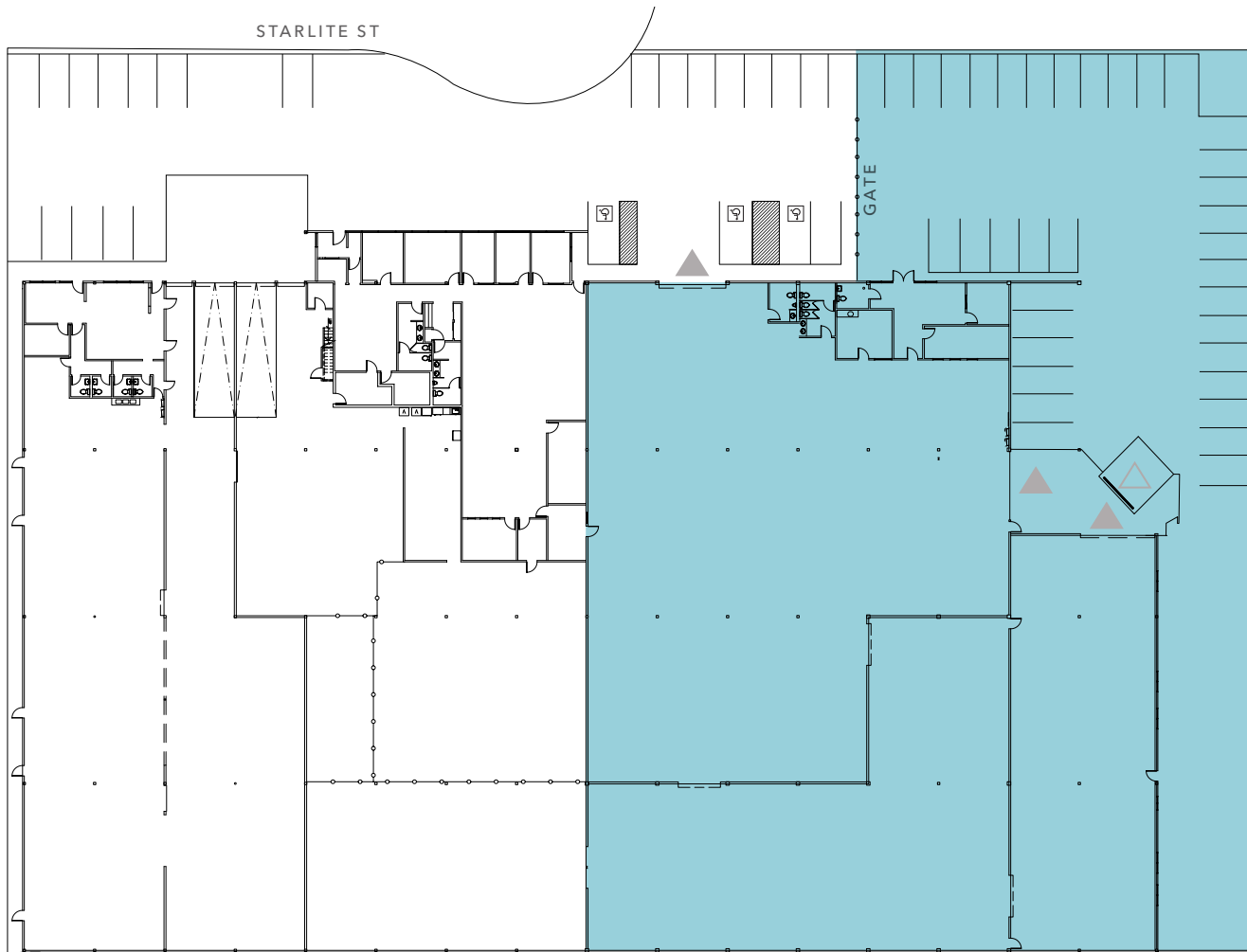
- POWER:** 600 amps
480/277 Volts 3 phase/4 wire
- SKYLIGHTS** throughout
- SPRINKLERS**
- 2** grade level doors
- 1** dock high door

▲ Grade level loading

△ Dock-high loading

FLOOR PLAN NOT TO SCALE

SITE PLAN





+34
PARKING SPACES

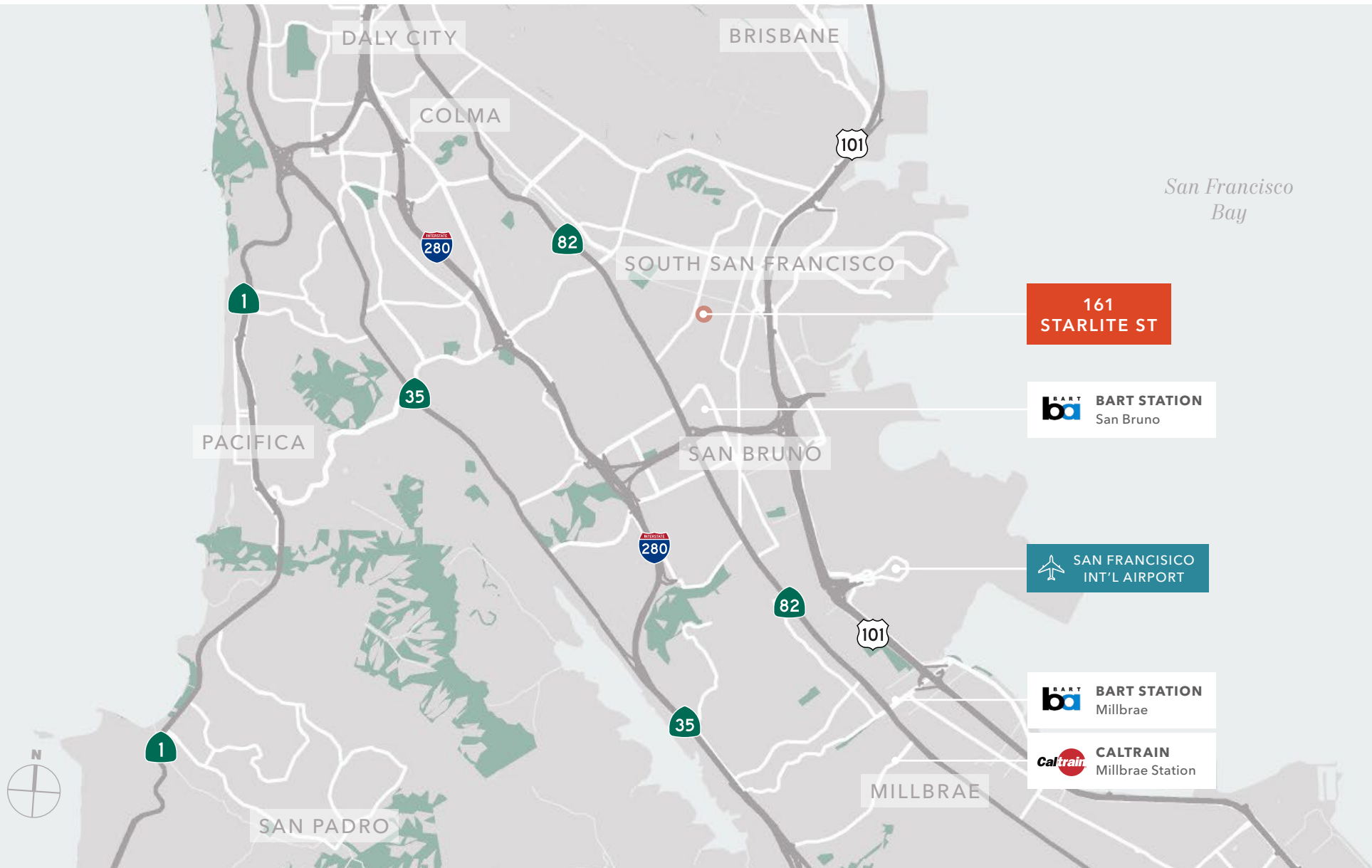
+8
UNRESERVED PARKING SPOTS

PRIVATE
GATED YARD

 VIEW VIRTUAL TOUR

 Grade level loading
 Dock-high loading

FLOOR PLAN NOT TO SCALE





161 STARLITE ST, UNIT C

For more information on this property, please contact

CARLA SCIMEMI
 415.229.8955
 carla.scimemi@kidders.com
 LIC N° 01323582

KIDDER.COM

This information supplied herein is from sources we deem reliable. It is provided without any representation, warranty, or guarantee, expressed or implied as to its accuracy. Prospective Buyer or Tenant should conduct an independent investigation and verification of all matters deemed to be material, including, but not limited to, statements of income and expenses. Consult your attorney, accountant, or other professional advisor.

