

Available Medical Office Space for Lease

Arrowhead Physicians Plaza

18699 N 67th Ave, Glendale, AZ 85308



For Leasing Information:

Trey Trask

Senior Director of Leasing

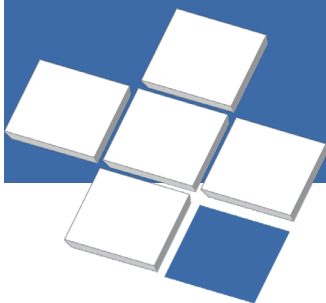
Phone: 858-794-1900

ttrask@pmbres.com

www.pmbres.com

CA Lic. 01304141

- 43,745 SF 3-Story Medical Office Building
- On Campus of Tenet Health - Abrazo Arrowhead Hospital
- Walgreens Pharmacy directly next door
- Ample free surface and structure parking
- Convenient access to Arizona State Route 101
- Across from new future Phoenix Children's Hospital
- Abrazo Hospital Services:
Robotic Surgery, Diagnostic Imaging, Heart Care, Hyperbaric Chamber, Imaging, Mother & Baby, Women's Health, Oncology, Orthopedics, Rehabilitation Services, Stroke and Vascular Care, Surgical Services, Urology, Wound Care



PMB
Real Estate Services
Real Estate Management Solutions for Healthcare



1st Floor



For Leasing Information:

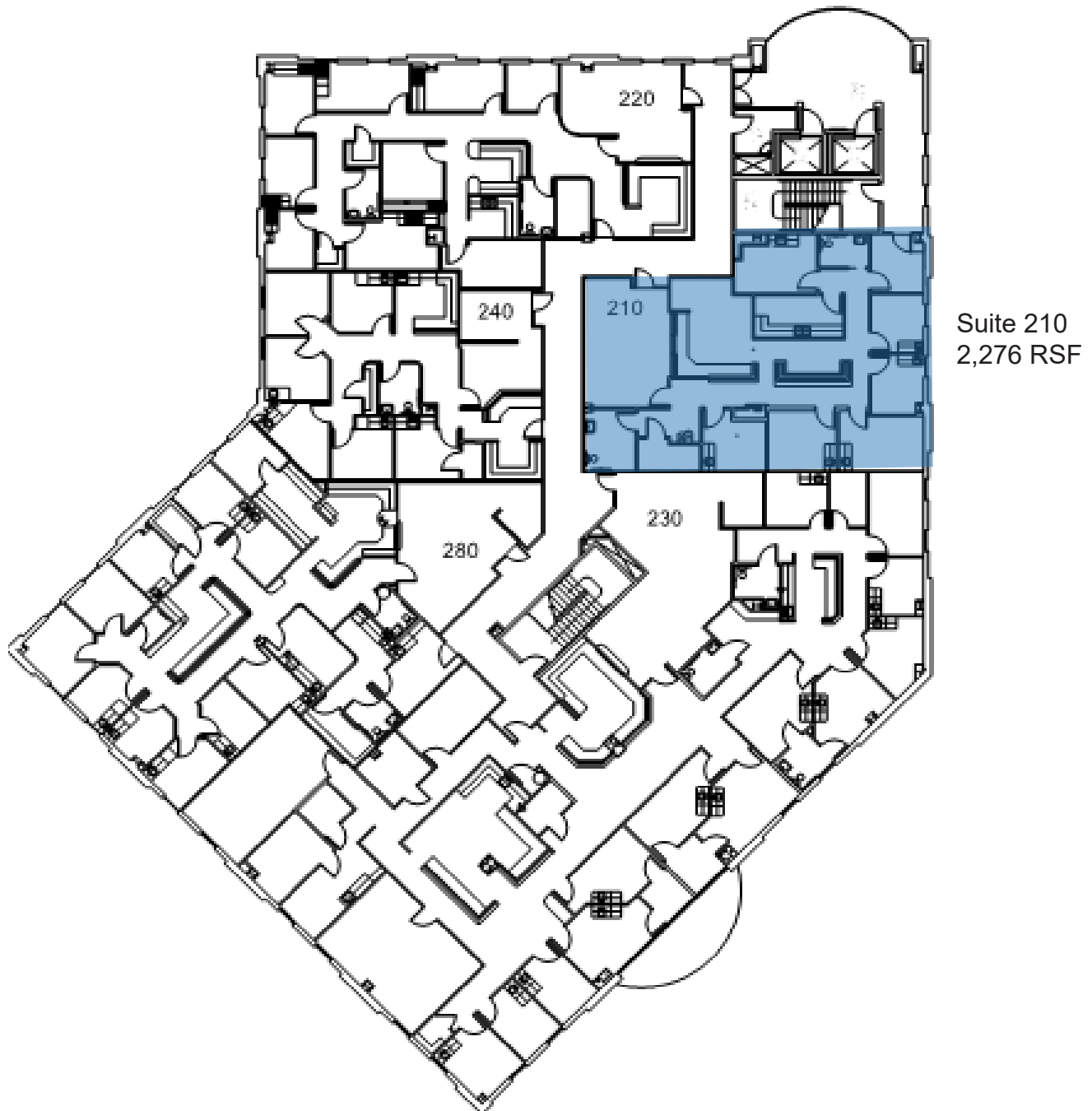
Trey Trask | Senior Director of Leasing
Phone: 858-794-1900 | TTrask@pmbres.com
www.pmbres.com | CA Lic. 01304141



PMB Real Estate Services

2nd Floor

Click [HERE](#) to take a virtual tour of Suite 210



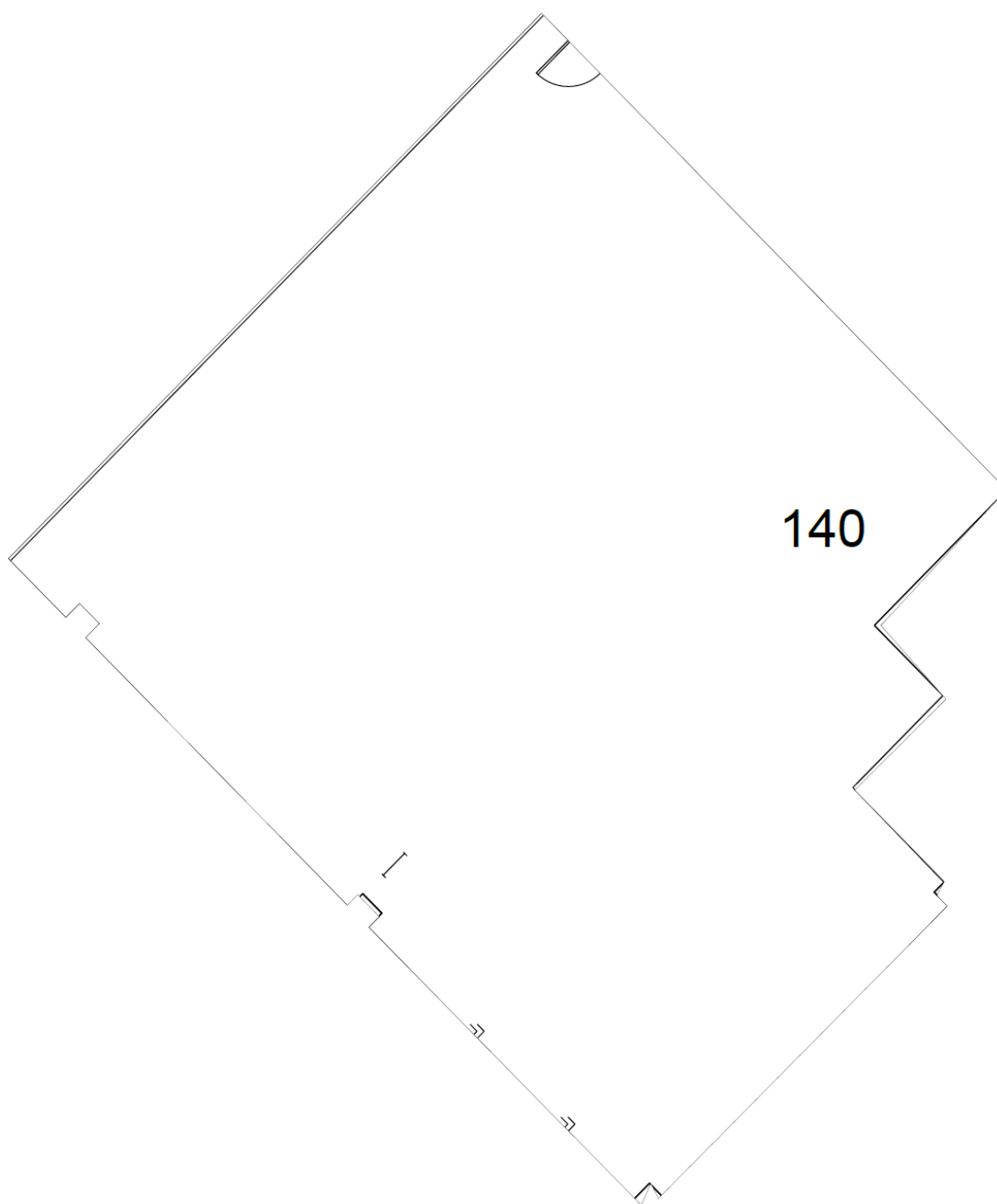
For Leasing Information:

Trey Trask | Senior Director of Leasing
Phone: 858-794-1900 | TTrask@pmbres.com
www.pmbres.com | CA Lic. 01304141



PMB Real Estate Services

Suite 140 | $\pm 3,125$ RSF



For Leasing Information:

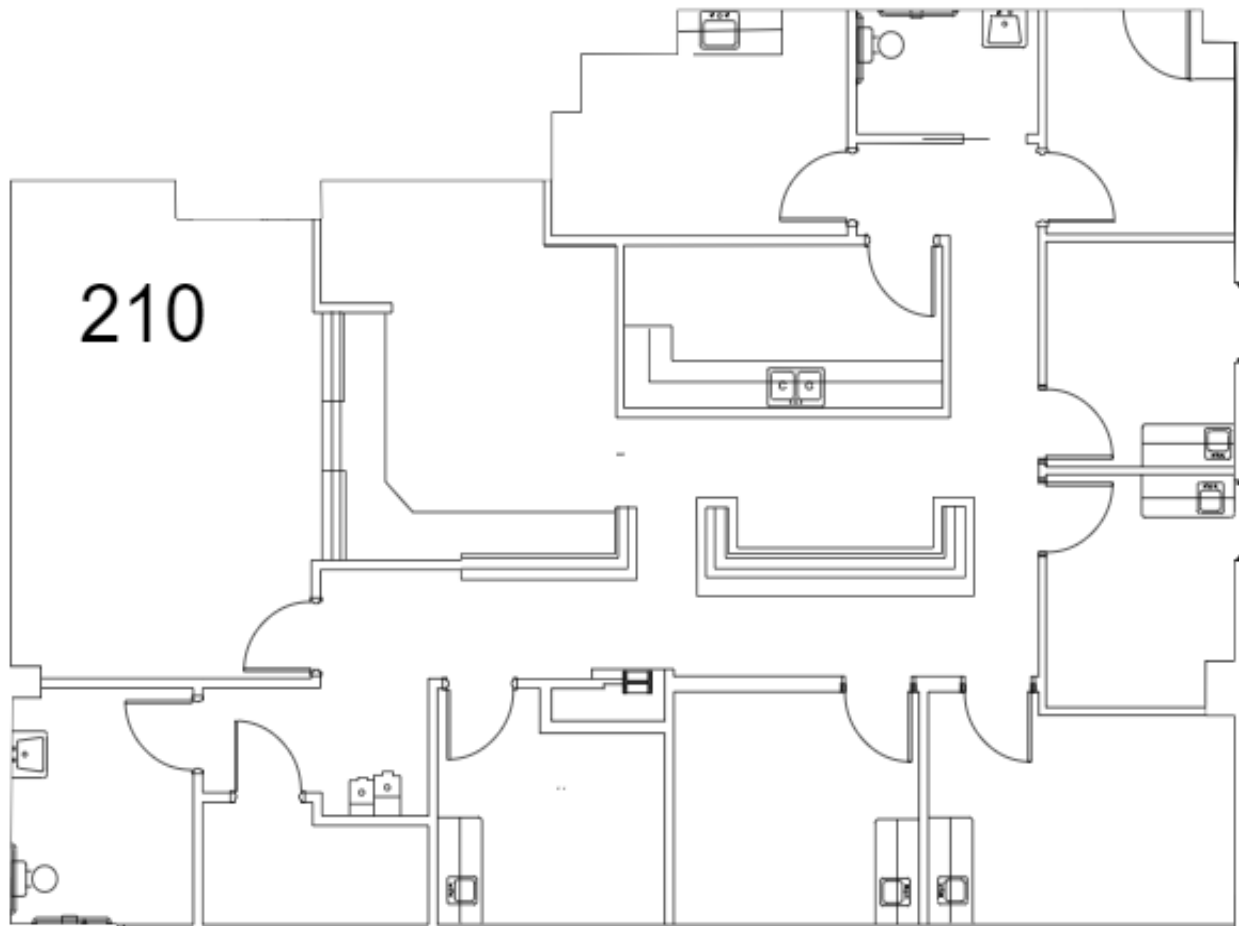
Trey Trask | Senior Director of Leasing
Phone: 858-794-1900 | TTrask@pmbres.com
www.pmbres.com | CA Lic. 01304141



PMB Real Estate Services

Suite 210 | ±2,276 RSF

Click [HERE](#) to take a virtual tour of Suite 210



For Leasing Information:

Trey Trask | Senior Director of Leasing
Phone: 858-794-1900 | TTrask@pmbres.com
www.pmbres.com | CA Lic. 01304141



PMB Real Estate Services