

# Home data report

## 1920 Georgetown Road, Hudson, Ohio 44236, United States



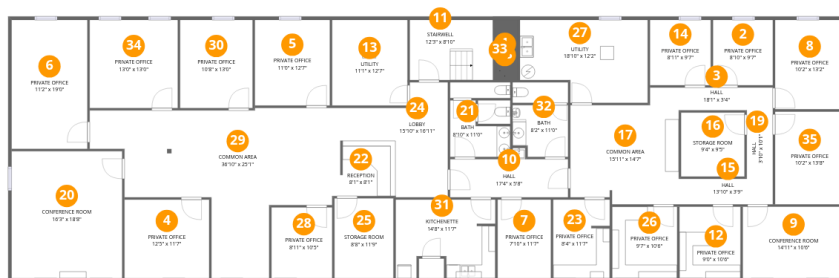
**Total Area: 8908 sq. ft**

1st Floor: 4008 sq. ft, 2nd Floor: 4900 sq. ft

Excluded: Utility 347 sq. ft, Stairwell 108 sq. ft, Storage room 240 sq. ft, Walls: 337 sq. ft

### Property summary





## Room dimensions

### Floor 1

Total:4008sqft Excluded: 645sqft

#		Dimensions	sqft	Counted as living area
1	.	8'2" x 3'0"	24 sq. ft	Yes
2	Private Office	8'10" x 9'7"	85 sq. ft	Yes
3	Hall	18'1" x 3'4"	60 sq. ft	Yes
4	Private Office	12'5" x 11'7"	144 sq. ft	Yes
5	Private Office	11'0" x 12'7"	139 sq. ft	Yes
6	Private Office	11'2" x 19'0"	211 sq. ft	Yes
7	Private Office	7'10" x 11'7"	91 sq. ft	Yes
8	Private Office	10'2" x 13'2"	134 sq. ft	Yes
9	Conference Room	14'11" x 10'6"	157 sq. ft	Yes
10	Hall	17'4" x 5'8"	98 sq. ft	Yes
11	Stairwell	12'3" x 8'10"	108 sq. ft	No

Home data report

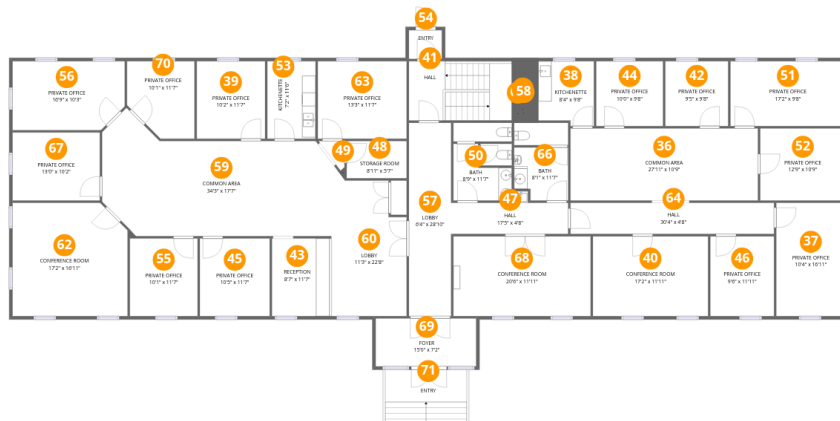
1920 Georgetown Road, Hudson, Ohio 44236, United States

#		Dimensions	sqft	Counted as living area
12	Private Office	9'0" x 10'6"	95 sq. ft	Yes
13	Utility	11'1" x 12'7"	140 sq. ft	No
14	Private Office	8'11" x 9'7"	86 sq. ft	Yes
15	Hall	13'10" x 3'9"	52 sq. ft	Yes
16	Storage Room	9'4" x 9'5"	88 sq. ft	No
17	Common Area	15'11" x 14'7"	233 sq. ft	Yes
18	.	4'9" x 3'6"	16 sq. ft	Yes
19	Hall	3'10" x 10'1"	39 sq. ft	Yes
20	Conference Room	16'3" x 18'8"	303 sq. ft	Yes
21	Bath	8'10" x 11'0"	97 sq. ft	Yes
22	Reception	8'1" x 8'1"	66 sq. ft	Yes
23	Private Office	8'4" x 11'7"	96 sq. ft	Yes
24	Lobby	15'10" x 16'11"	267 sq. ft	Yes
25	Storage Room	8'8" x 11'9"	102 sq. ft	No
26	Private Office	9'7" x 10'6"	101 sq. ft	Yes
27	Utility	18'10" x 12'2"	229 sq. ft	No
28	Private Office	8'11" x 10'5"	93 sq. ft	Yes
29	Common Area	36'10" x 25'1"	924 sq. ft	Yes
30	Private Office	10'8" x 13'0"	138 sq. ft	Yes
31	Kitchenette	14'8" x 11'7"	170 sq. ft	Yes
32	Bath	8'2" x 11'0"	90 sq. ft	Yes

Home data report

**1920 Georgetown Road, Hudson, Ohio 44236, United States**

#		Dimensions	sqft	Counted as living area
33	.	8'10" x 2'3"	20 sq. ft	Yes
34	Private Office	13'0" x 13'0"	168 sq. ft	Yes
35	Private Office	10'2" x 13'8"	139 sq. ft	Yes



## Room dimensions

Floor 2

Total:4900sqft Excluded: 50sqft

#		Dimensions	sqft	Counted as living area
36	Common Area	27'11" x 10'9"	301 sq. ft	Yes
37	Private Office	10'4" x 16'11"	174 sq. ft	Yes
38	Kitchenette	8'4" x 9'8"	80 sq. ft	Yes
39	Private Office	10'2" x 11'7"	118 sq. ft	Yes
40	Conference Room	17'2" x 11'11"	204 sq. ft	Yes
41	Hall	5'5" x 8'10"	48 sq. ft	Yes
42	Private Office	9'5" x 9'8"	91 sq. ft	Yes
43	Reception	8'7" x 11'7"	99 sq. ft	Yes
44	Private Office	10'0" x 9'8"	96 sq. ft	Yes
45	Private Office	10'5" x 11'7"	121 sq. ft	Yes
46	Private Office	9'6" x 11'11"	113 sq. ft	Yes

## Home data report

## 1920 Georgetown Road, Hudson, Ohio 44236, United States

#		Dimensions	sqft	Counted as living area
47	Hall	17'5" x 4'8"	82 sq. ft	Yes
48	Storage Room	8'11" x 5'7"	50 sq. ft	No
49	.	3'6" x 4'3"	15 sq. ft	Yes
50	Bath	8'9" x 11'7"	101 sq. ft	Yes
51	Private Office	17'2" x 9'8"	166 sq. ft	Yes
52	Private Office	12'9" x 10'9"	137 sq. ft	Yes
53	Kitchenette	7'2" x 11'6"	83 sq. ft	Yes
54	Entry	4'11" x 4'4"	21 sq. ft	Yes
55	Private Office	10'1" x 11'7"	117 sq. ft	Yes
56	Private Office	16'9" x 10'3"	172 sq. ft	Yes
57	Lobby	6'4" x 28'10"	181 sq. ft	Yes
58	.	8'9" x 2'10"	24 sq. ft	Yes
59	Common Area	34'3" x 17'7"	603 sq. ft	Yes
60	Lobby	11'3" x 22'8"	254 sq. ft	Yes
61	.	4'8" x 3'3"	15 sq. ft	Yes
62	Conference Room	17'2" x 16'11"	290 sq. ft	Yes
63	Private Office	13'3" x 11'7"	153 sq. ft	Yes
64	Hall	30'4" x 4'8"	141 sq. ft	Yes
65	.	8'1" x 3'4"	27 sq. ft	Yes
66	Bath	8'1" x 11'7"	93 sq. ft	Yes
67	Private Office	13'0" x 10'2"	132 sq. ft	Yes

Home data report

**1920 Georgetown Road, Hudson, Ohio 44236, United States**

#		Dimensions	sqft	Counted as living area
68	Conference Room	20'6" x 11'11"	244 sq. ft	Yes
69	Foyer	15'0" x 7'2"	107 sq. ft	Yes
70	Private Office	10'1" x 11'7"	116 sq. ft	Yes
71	Entry	12'2" x 4'10"	58 sq. ft	Yes

## 1 Floor 1 - .

---



Dimensions: 8'2" x 3'0"  
Area: 24 sq. ft  
Counted as living area: Yes

Heated: Yes  
Finished: Yes  
Enclosed: Yes  
Contiguous: Yes  
Permitted: Yes  
Wet space: No  
Addition: No  
Conversion: No

## 2 Floor 1 - Private Office

---



Dimensions: 8'10" x 9'7"  
Area: 85 sq. ft  
Counted as living area: Yes

Heated: Yes  
Finished: Yes  
Enclosed: Yes  
Contiguous: Yes  
Permitted: Yes  
Wet space: No  
Addition: No  
Conversion: No

### 3 Floor 1 - Hall



Dimensions: 18'1" x 3'4"  
Area: 60 sq. ft  
Counted as living area: Yes

Heated: Yes  
Finished: Yes  
Enclosed: Yes  
Contiguous: Yes  
Permitted: Yes  
Wet space: No  
Addition: No  
Conversion: No

### 4 Floor 1 - Private Office



Dimensions: 12'5" x 11'7"  
Area: 144 sq. ft  
Counted as living area: Yes

Heated: Yes  
Finished: Yes  
Enclosed: Yes  
Contiguous: Yes  
Permitted: Yes  
Wet space: No  
Addition: No  
Conversion: No

### 5 Floor 1 - Private Office



Dimensions: 11'0" x 12'7"  
Area: 139 sq. ft  
Counted as living area: Yes

Heated: Yes  
Finished: Yes  
Enclosed: Yes  
Contiguous: Yes  
Permitted: Yes  
Wet space: No  
Addition: No  
Conversion: No

**6** Floor 1 - Private Office

---



Dimensions: 11'2" x 19'0"  
Area: 211 sq. ft  
Counted as living area: Yes

Heated: Yes  
Finished: Yes  
Enclosed: Yes  
Contiguous: Yes  
Permitted: Yes  
Wet space: No  
Addition: No  
Conversion: No

**7** Floor 1 - Private Office

---



Dimensions: 7'10" x 11'7"  
Area: 91 sq. ft  
Counted as living area: Yes

Heated: Yes  
Finished: Yes  
Enclosed: Yes  
Contiguous: Yes  
Permitted: Yes  
Wet space: No  
Addition: No  
Conversion: No

**8** Floor 1 - Private Office

---



Dimensions: 10'2" x 13'2"  
Area: 134 sq. ft  
Counted as living area: Yes

Heated: Yes  
Finished: Yes  
Enclosed: Yes  
Contiguous: Yes  
Permitted: Yes  
Wet space: No  
Addition: No  
Conversion: No

## 9 Floor 1 - Conference Room



Dimensions: 14'11" x 10'6"  
Area: 157 sq. ft  
Counted as living area: Yes

Heated: Yes  
Finished: Yes  
Enclosed: Yes  
Contiguous: Yes  
Permitted: Yes  
Wet space: No  
Addition: No  
Conversion: No

## 10 Floor 1 - Hall



Dimensions: 17'4" x 5'8"  
Area: 98 sq. ft  
Counted as living area: Yes

Heated: Yes  
Finished: Yes  
Enclosed: Yes  
Contiguous: Yes  
Permitted: Yes  
Wet space: No  
Addition: No  
Conversion: No

## 11 Floor 1 - Stairwell



Dimensions: 12'3" x 8'10"  
Area: 108 sq. ft  
Counted as living area: No

Heated: No  
Finished: No  
Enclosed: No  
Contiguous: No  
Permitted: No  
Wet space: No  
Addition: No  
Conversion: No

## 12 Floor 1 - Private Office



Dimensions: 9'0" x 10'6"  
Area: 95 sq. ft  
Counted as living area: Yes

Heated: Yes  
Finished: Yes  
Enclosed: Yes  
Contiguous: Yes  
Permitted: Yes  
Wet space: No  
Addition: No  
Conversion: No

## 13 Floor 1 - Utility



Dimensions: 11'1" x 12'7"  
Area: 140 sq. ft  
Counted as living area: No

Heated: Yes  
Finished: No  
Enclosed: Yes  
Contiguous: Yes  
Permitted: Yes  
Wet space: No  
Addition: No  
Conversion: No

## 14 Floor 1 - Private Office



Dimensions: 8'11" x 9'7"  
Area: 86 sq. ft  
Counted as living area: Yes

Heated: Yes  
Finished: Yes  
Enclosed: Yes  
Contiguous: Yes  
Permitted: Yes  
Wet space: No  
Addition: No  
Conversion: No

### 15 Floor 1 - Hall



Dimensions: 13'10" x 3'9"  
Area: 52 sq. ft  
Counted as living area: Yes

Heated: Yes  
Finished: Yes  
Enclosed: Yes  
Contiguous: Yes  
Permitted: Yes  
Wet space: No  
Addition: No  
Conversion: No

### 16 Floor 1 - Storage Room



Dimensions: 9'4" x 9'5"  
Area: 88 sq. ft  
Counted as living area: No

Heated: No  
Finished: No  
Enclosed: No  
Contiguous: No  
Permitted: Yes  
Wet space: No  
Addition: No  
Conversion: No

### 17 Floor 1 - Common Area



Dimensions: 15'11" x 14'7"  
Area: 233 sq. ft  
Counted as living area: Yes

Heated: Yes  
Finished: Yes  
Enclosed: Yes  
Contiguous: Yes  
Permitted: Yes  
Wet space: No  
Addition: No  
Conversion: No

**18** Floor 1 - .



Dimensions: 4'9" x 3'6"  
Area: 16 sq. ft  
Counted as living area: Yes

Heated: Yes  
Finished: Yes  
Enclosed: Yes  
Contiguous: Yes  
Permitted: Yes  
Wet space: No  
Addition: No  
Conversion: No

**19** Floor 1 - Hall



Dimensions: 3'10" x 10'1"  
Area: 39 sq. ft  
Counted as living area: Yes

Heated: Yes  
Finished: Yes  
Enclosed: Yes  
Contiguous: Yes  
Permitted: Yes  
Wet space: No  
Addition: No  
Conversion: No

**20** Floor 1 - Conference Room



Dimensions: 16'3" x 18'8"  
Area: 303 sq. ft  
Counted as living area: Yes

Heated: Yes  
Finished: Yes  
Enclosed: Yes  
Contiguous: Yes  
Permitted: Yes  
Wet space: No  
Addition: No  
Conversion: No

### 21 Floor 1 - Bath



Dimensions: 8'10" x 11'0"  
Area: 97 sq. ft  
Counted as living area: Yes

Heated: Yes  
Finished: Yes  
Enclosed: Yes  
Contiguous: Yes  
Permitted: Yes  
Wet space: Yes  
Addition: No  
Conversion: No

### 22 Floor 1 - Reception



Dimensions: 8'1" x 8'1"  
Area: 66 sq. ft  
Counted as living area: Yes

Heated: Yes  
Finished: Yes  
Enclosed: Yes  
Contiguous: Yes  
Permitted: Yes  
Wet space: No  
Addition: No  
Conversion: No

### 23 Floor 1 - Private Office



Dimensions: 8'4" x 11'7"  
Area: 96 sq. ft  
Counted as living area: Yes

Heated: Yes  
Finished: Yes  
Enclosed: Yes  
Contiguous: Yes  
Permitted: Yes  
Wet space: No  
Addition: No  
Conversion: No

**24** Floor 1 - Lobby

---



Dimensions: 15'10" x 16'11"  
Area: 267 sq. ft  
Counted as living area: Yes

Heated: Yes  
Finished: Yes  
Enclosed: Yes  
Contiguous: Yes  
Permitted: Yes  
Wet space: No  
Addition: No  
Conversion: No

**25** Floor 1 - Storage Room

---



Dimensions: 8'8" x 11'9"  
Area: 102 sq. ft  
Counted as living area: No

Heated: No  
Finished: No  
Enclosed: No  
Contiguous: No  
Permitted: Yes  
Wet space: No  
Addition: No  
Conversion: No

**26** Floor 1 - Private Office

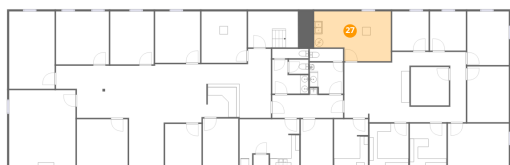
---



Dimensions: 9'7" x 10'6"  
Area: 101 sq. ft  
Counted as living area: Yes

Heated: Yes  
Finished: Yes  
Enclosed: Yes  
Contiguous: Yes  
Permitted: Yes  
Wet space: No  
Addition: No  
Conversion: No

### 27 Floor 1 - Utility



Dimensions: 18'10" x 12'2"  
Area: 229 sq. ft  
Counted as living area: No

Heated: Yes  
Finished: No  
Enclosed: Yes  
Contiguous: Yes  
Permitted: Yes  
Wet space: No  
Addition: No  
Conversion: No

### 28 Floor 1 - Private Office



Dimensions: 8'11" x 10'5"  
Area: 93 sq. ft  
Counted as living area: Yes

Heated: Yes  
Finished: Yes  
Enclosed: Yes  
Contiguous: Yes  
Permitted: Yes  
Wet space: No  
Addition: No  
Conversion: No

### 29 Floor 1 - Common Area



Dimensions: 36'10" x 25'1"  
Area: 924 sq. ft  
Counted as living area: Yes

Heated: Yes  
Finished: Yes  
Enclosed: Yes  
Contiguous: Yes  
Permitted: Yes  
Wet space: No  
Addition: No  
Conversion: No

### 30 Floor 1 - Private Office



Dimensions: 10'8" x 13'0"  
Area: 138 sq. ft  
Counted as living area: Yes

Heated: Yes  
Finished: Yes  
Enclosed: Yes  
Contiguous: Yes  
Permitted: Yes  
Wet space: No  
Addition: No  
Conversion: No

### 31 Floor 1 - Kitchenette



Dimensions: 14'8" x 11'7"  
Area: 170 sq. ft  
Counted as living area: Yes

Heated: Yes  
Finished: Yes  
Enclosed: Yes  
Contiguous: Yes  
Permitted: Yes  
Wet space: No  
Addition: No  
Conversion: No

### 32 Floor 1 - Bath



Dimensions: 8'2" x 11'0"  
Area: 90 sq. ft  
Counted as living area: Yes

Heated: Yes  
Finished: Yes  
Enclosed: Yes  
Contiguous: Yes  
Permitted: Yes  
Wet space: Yes  
Addition: No  
Conversion: No

**33** Floor 1 - .



Dimensions: 8'10" x 2'3"  
Area: 20 sq. ft  
Counted as living area: Yes

Heated: Yes  
Finished: Yes  
Enclosed: Yes  
Contiguous: Yes  
Permitted: Yes  
Wet space: No  
Addition: No  
Conversion: No

**34** Floor 1 - Private Office



Dimensions: 13'0" x 13'0"  
Area: 168 sq. ft  
Counted as living area: Yes

Heated: Yes  
Finished: Yes  
Enclosed: Yes  
Contiguous: Yes  
Permitted: Yes  
Wet space: No  
Addition: No  
Conversion: No

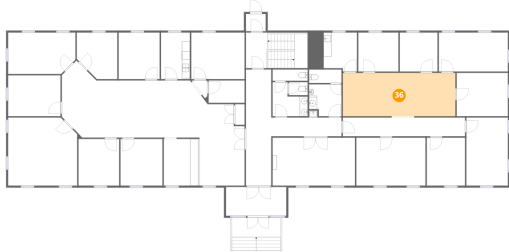
**35** Floor 1 - Private Office



Dimensions: 10'2" x 13'8"  
Area: 139 sq. ft  
Counted as living area: Yes

Heated: Yes  
Finished: Yes  
Enclosed: Yes  
Contiguous: Yes  
Permitted: Yes  
Wet space: No  
Addition: No  
Conversion: No

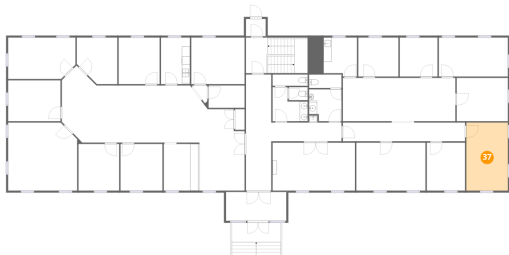
### 36 Floor 2 - Common Area



Dimensions: 27'11" x 10'9"  
Area: 301 sq. ft  
Counted as living area: Yes

Heated: Yes  
Finished: Yes  
Enclosed: Yes  
Contiguous: Yes  
Permitted: Yes  
Wet space: No  
Addition: No  
Conversion: No

### 37 Floor 2 - Private Office



Dimensions: 10'4" x 16'11"  
Area: 174 sq. ft  
Counted as living area: Yes

Heated: Yes  
Finished: Yes  
Enclosed: Yes  
Contiguous: Yes  
Permitted: Yes  
Wet space: No  
Addition: No  
Conversion: No

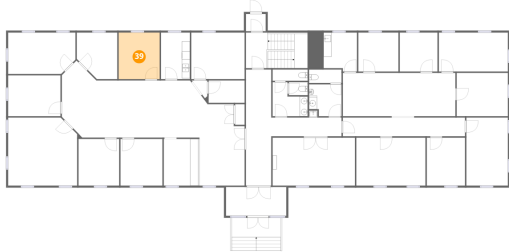
### 38 Floor 2 - Kitchenette



Dimensions: 8'4" x 9'8"  
Area: 80 sq. ft  
Counted as living area: Yes

Heated: Yes  
Finished: Yes  
Enclosed: Yes  
Contiguous: Yes  
Permitted: Yes  
Wet space: No  
Addition: No  
Conversion: No

**39** Floor 2 - Private Office



Dimensions: 10'2" x 11'7"  
Area: 118 sq. ft  
Counted as living area: Yes

Heated: Yes  
Finished: Yes  
Enclosed: Yes  
Contiguous: Yes  
Permitted: Yes  
Wet space: No  
Addition: No  
Conversion: No

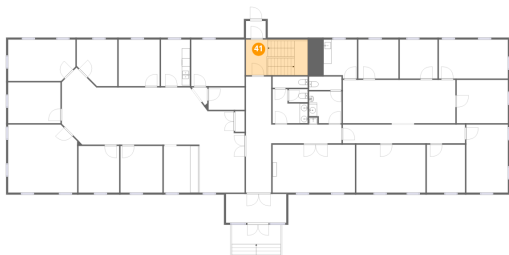
**40** Floor 2 - Conference Room



Dimensions: 17'2" x 11'11"  
Area: 204 sq. ft  
Counted as living area: Yes

Heated: Yes  
Finished: Yes  
Enclosed: Yes  
Contiguous: Yes  
Permitted: Yes  
Wet space: No  
Addition: No  
Conversion: No

**41** Floor 2 - Hall



Dimensions: 5'5" x 8'10"  
Area: 48 sq. ft  
Counted as living area: Yes

Heated: Yes  
Finished: Yes  
Enclosed: Yes  
Contiguous: Yes  
Permitted: Yes  
Wet space: No  
Addition: No  
Conversion: No

**42** Floor 2 - Private Office



Dimensions: 9'5" x 9'8"  
Area: 91 sq. ft  
Counted as living area: Yes

Heated: Yes  
Finished: Yes  
Enclosed: Yes  
Contiguous: Yes  
Permitted: Yes  
Wet space: No  
Addition: No  
Conversion: No

**43** Floor 2 - Reception



Dimensions: 8'7" x 11'7"  
Area: 99 sq. ft  
Counted as living area: Yes

Heated: Yes  
Finished: Yes  
Enclosed: Yes  
Contiguous: Yes  
Permitted: Yes  
Wet space: No  
Addition: No  
Conversion: No

**44** Floor 2 - Private Office



Dimensions: 10'0" x 9'8"  
Area: 96 sq. ft  
Counted as living area: Yes

Heated: Yes  
Finished: Yes  
Enclosed: Yes  
Contiguous: Yes  
Permitted: Yes  
Wet space: No  
Addition: No  
Conversion: No

**45** Floor 2 - Private Office



Dimensions: 10'5" x 11'7"  
Area: 121 sq. ft  
Counted as living area: Yes

Heated: Yes  
Finished: Yes  
Enclosed: Yes  
Contiguous: Yes  
Permitted: Yes  
Wet space: No  
Addition: No  
Conversion: No

**46** Floor 2 - Private Office



Dimensions: 9'6" x 11'11"  
Area: 113 sq. ft  
Counted as living area: Yes

Heated: Yes  
Finished: Yes  
Enclosed: Yes  
Contiguous: Yes  
Permitted: Yes  
Wet space: No  
Addition: No  
Conversion: No

**47** Floor 2 - Hall



Dimensions: 17'5" x 4'8"  
Area: 82 sq. ft  
Counted as living area: Yes

Heated: Yes  
Finished: Yes  
Enclosed: Yes  
Contiguous: Yes  
Permitted: Yes  
Wet space: No  
Addition: No  
Conversion: No

**48** Floor 2 - Storage Room



Dimensions: 8'11" x 5'7"  
Area: 50 sq. ft  
Counted as living area: No

Heated: No  
Finished: No  
Enclosed: No  
Contiguous: No  
Permitted: Yes  
Wet space: No  
Addition: No  
Conversion: No

**49** Floor 2 - .



Dimensions: 3'6" x 4'3"  
Area: 15 sq. ft  
Counted as living area: Yes

Heated: Yes  
Finished: Yes  
Enclosed: Yes  
Contiguous: Yes  
Permitted: Yes  
Wet space: No  
Addition: No  
Conversion: No

**50** Floor 2 - Bath



Dimensions: 8'9" x 11'7"  
Area: 101 sq. ft  
Counted as living area: Yes

Heated: Yes  
Finished: Yes  
Enclosed: Yes  
Contiguous: Yes  
Permitted: Yes  
Wet space: Yes  
Addition: No  
Conversion: No

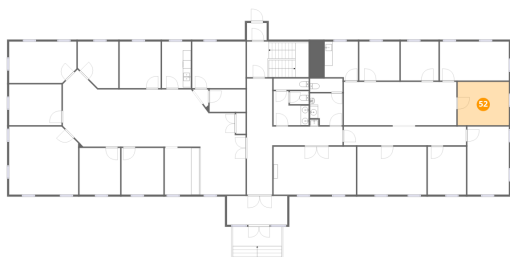
### 51 Floor 2 - Private Office



Dimensions: 17'2" x 9'8"  
Area: 166 sq. ft  
Counted as living area: Yes

Heated: Yes  
Finished: Yes  
Enclosed: Yes  
Contiguous: Yes  
Permitted: Yes  
Wet space: No  
Addition: No  
Conversion: No

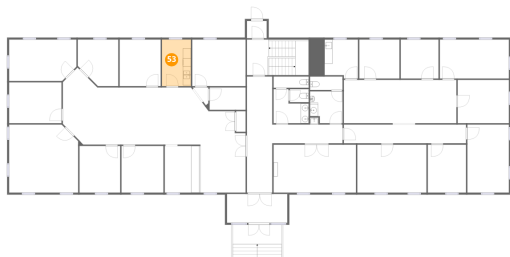
### 52 Floor 2 - Private Office



Dimensions: 12'9" x 10'9"  
Area: 137 sq. ft  
Counted as living area: Yes

Heated: Yes  
Finished: Yes  
Enclosed: Yes  
Contiguous: Yes  
Permitted: Yes  
Wet space: No  
Addition: No  
Conversion: No

### 53 Floor 2 - Kitchenette



Dimensions: 7'2" x 11'6"  
Area: 83 sq. ft  
Counted as living area: Yes

Heated: Yes  
Finished: Yes  
Enclosed: Yes  
Contiguous: Yes  
Permitted: Yes  
Wet space: No  
Addition: No  
Conversion: No

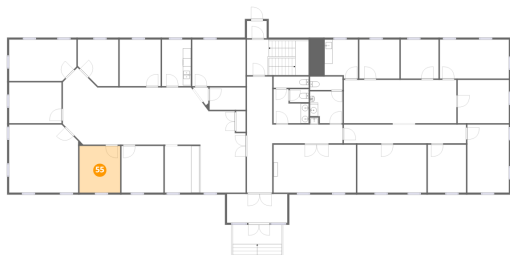
**54** Floor 2 - Entry



Dimensions: 4'11" x 4'4"  
Area: 21 sq. ft  
Counted as living area: Yes

Heated: Yes  
Finished: Yes  
Enclosed: Yes  
Contiguous: Yes  
Permitted: Yes  
Wet space: No  
Addition: No  
Conversion: No

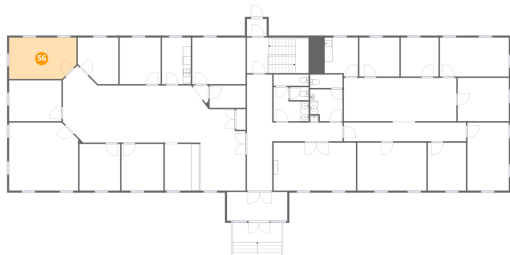
**55** Floor 2 - Private Office



Dimensions: 10'1" x 11'7"  
Area: 117 sq. ft  
Counted as living area: Yes

Heated: Yes  
Finished: Yes  
Enclosed: Yes  
Contiguous: Yes  
Permitted: Yes  
Wet space: No  
Addition: No  
Conversion: No

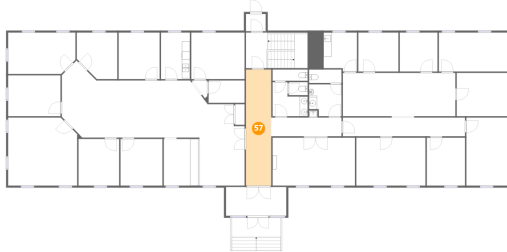
**56** Floor 2 - Private Office



Dimensions: 16'9" x 10'3"  
Area: 172 sq. ft  
Counted as living area: Yes

Heated: Yes  
Finished: Yes  
Enclosed: Yes  
Contiguous: Yes  
Permitted: Yes  
Wet space: No  
Addition: No  
Conversion: No

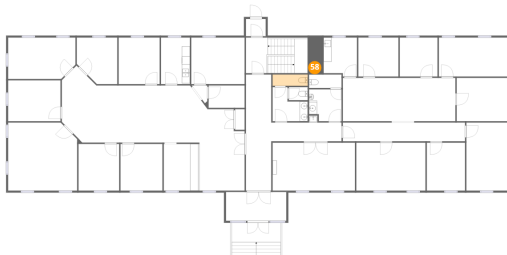
**57** Floor 2 - Lobby



Dimensions: 6'4" x 28'10"  
Area: 181 sq. ft  
Counted as living area: Yes

Heated: Yes  
Finished: Yes  
Enclosed: Yes  
Contiguous: Yes  
Permitted: Yes  
Wet space: No  
Addition: No  
Conversion: No

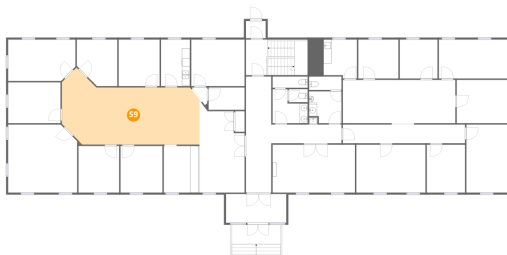
**58** Floor 2 - .



Dimensions: 8'9" x 2'10"  
Area: 24 sq. ft  
Counted as living area: Yes

Heated: Yes  
Finished: Yes  
Enclosed: Yes  
Contiguous: Yes  
Permitted: Yes  
Wet space: No  
Addition: No  
Conversion: No

**59** Floor 2 - Common Area



Dimensions: 34'3" x 17'7"  
Area: 603 sq. ft  
Counted as living area: Yes

Heated: Yes  
Finished: Yes  
Enclosed: Yes  
Contiguous: Yes  
Permitted: Yes  
Wet space: No  
Addition: No  
Conversion: No

**60** Floor 2 - Lobby



Dimensions: 11'3" x 22'8"  
Area: 254 sq. ft  
Counted as living area: Yes

Heated: Yes  
Finished: Yes  
Enclosed: Yes  
Contiguous: Yes  
Permitted: Yes  
Wet space: No  
Addition: No  
Conversion: No

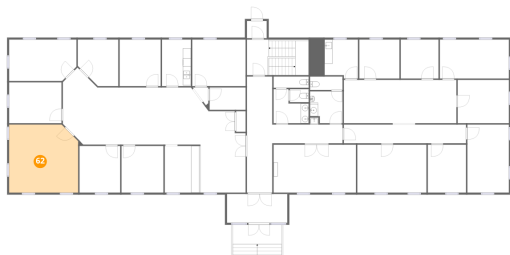
**61** Floor 2 - .



Dimensions: 4'8" x 3'3"  
Area: 15 sq. ft  
Counted as living area: Yes

Heated: Yes  
Finished: Yes  
Enclosed: Yes  
Contiguous: Yes  
Permitted: Yes  
Wet space: No  
Addition: No  
Conversion: No

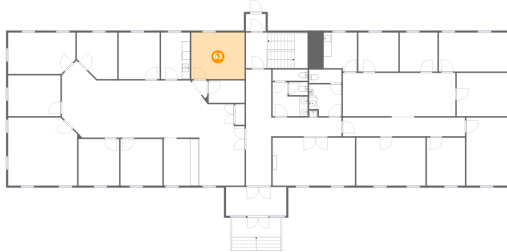
**62** Floor 2 - Conference Room



Dimensions: 17'2" x 16'11"  
Area: 290 sq. ft  
Counted as living area: Yes

Heated: Yes  
Finished: Yes  
Enclosed: Yes  
Contiguous: Yes  
Permitted: Yes  
Wet space: No  
Addition: No  
Conversion: No

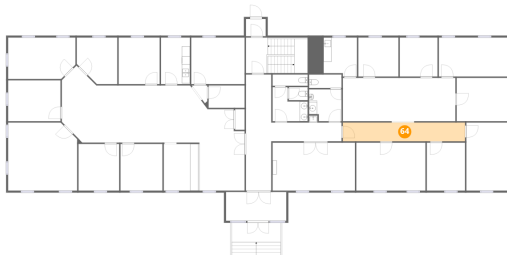
**63** Floor 2 - Private Office



Dimensions: 13'3" x 11'7"  
Area: 153 sq. ft  
Counted as living area: Yes

Heated: Yes  
Finished: Yes  
Enclosed: Yes  
Contiguous: Yes  
Permitted: Yes  
Wet space: No  
Addition: No  
Conversion: No

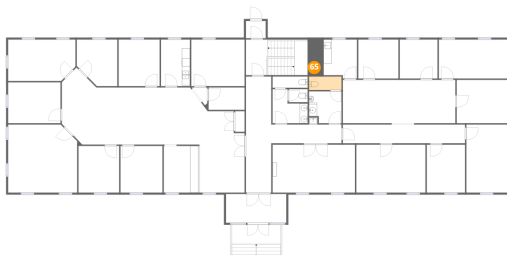
**64** Floor 2 - Hall



Dimensions: 30'4" x 4'8"  
Area: 141 sq. ft  
Counted as living area: Yes

Heated: Yes  
Finished: Yes  
Enclosed: Yes  
Contiguous: Yes  
Permitted: Yes  
Wet space: No  
Addition: No  
Conversion: No

**65** Floor 2 - .



Dimensions: 8'1" x 3'4"  
Area: 27 sq. ft  
Counted as living area: Yes

Heated: Yes  
Finished: Yes  
Enclosed: Yes  
Contiguous: Yes  
Permitted: Yes  
Wet space: No  
Addition: No  
Conversion: No

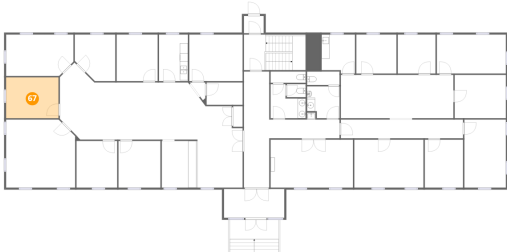
## 66 Floor 2 - Bath



Dimensions: 8'1" x 11'7"  
Area: 93 sq. ft  
Counted as living area: Yes

Heated: Yes  
Finished: Yes  
Enclosed: Yes  
Contiguous: Yes  
Permitted: Yes  
Wet space: Yes  
Addition: No  
Conversion: No

## 67 Floor 2 - Private Office



Dimensions: 13'0" x 10'2"  
Area: 132 sq. ft  
Counted as living area: Yes

Heated: Yes  
Finished: Yes  
Enclosed: Yes  
Contiguous: Yes  
Permitted: Yes  
Wet space: No  
Addition: No  
Conversion: No

## 68 Floor 2 - Conference Room



Dimensions: 20'6" x 11'11"  
Area: 244 sq. ft  
Counted as living area: Yes

Heated: Yes  
Finished: Yes  
Enclosed: Yes  
Contiguous: Yes  
Permitted: Yes  
Wet space: No  
Addition: No  
Conversion: No

### 69 Floor 2 - Foyer



Dimensions: 15'0" x 7'2"  
Area: 107 sq. ft  
Counted as living area: Yes

Heated: Yes  
Finished: Yes  
Enclosed: Yes  
Contiguous: Yes  
Permitted: Yes  
Wet space: No  
Addition: No  
Conversion: No

### 70 Floor 2 - Private Office



Dimensions: 10'1" x 11'7"  
Area: 116 sq. ft  
Counted as living area: Yes

Heated: Yes  
Finished: Yes  
Enclosed: Yes  
Contiguous: Yes  
Permitted: Yes  
Wet space: No  
Addition: No  
Conversion: No

### 71 Floor 2 - Entry



Dimensions: 12'2" x 4'10"  
Area: 58 sq. ft  
Counted as living area: Yes

Heated: Yes  
Finished: Yes  
Enclosed: Yes  
Contiguous: Yes  
Permitted: Yes  
Wet space: No  
Addition: No  
Conversion: No